



REPUBLIC OF SENEGAL
Un Peuple, un But, une Foi


MINISTRY OF ENVIRONMENT AND NATURE CONSERVATION
CENTRE DE SUIVI ECOLOGIQUE



UNFCCC COP16



ADAPTATION FUND SIDE EVENT
"ACCREDITATION PROCESS AND PROJECT CYCLE"




CANCUN, December 3rd, 2010

NATIONAL IMPLEMENTING ENTITY

THE STORY

By Dr. Assize TOURE, General Manager of the CSE



THE ADAPTATION FUND



- self-standing fund established under the Kyoto Protocol of the UNFCCC to *assist developing countries adjust to the effects of climate change*



ACCESS TO RESOURCES



- Developing countries can access the resources:
 - through multilateral development institutions: *indirect access*
 - through national entities: *direct access*



DIRECT ACCESS: VIRTUES

The proof of the pudding is in the eating



- Empowerment:
 - empowers developing countries to play a more direct role in how they adjust to the adverse effects of climate change
- Capacity building:
 - Put national expertise to good use while developing national capacities to familiarize and to take command of high standard monitoring and assessment processes



DIRECT ACCESS: VIRTUES



- An innovation in climate finance : more and more DC can access financial resources without taking the detour via multilateral institutions
- An unprecedented opportunity for developing countries to move from a status of CC “passive victims” to a position of dynamic and acknowledged actor in fighting CC



NIEs



CHALLENGES

- Meeting fiduciary standards set by the Fund
- Performance obligation: high expectations towards pioneers NIEs ⇒ implications on whether direct access will become more common in the climate finance



CENTRE DE SUIVI ECOLOGIQUE NATIONAL IMPLEMENTING ENTITY



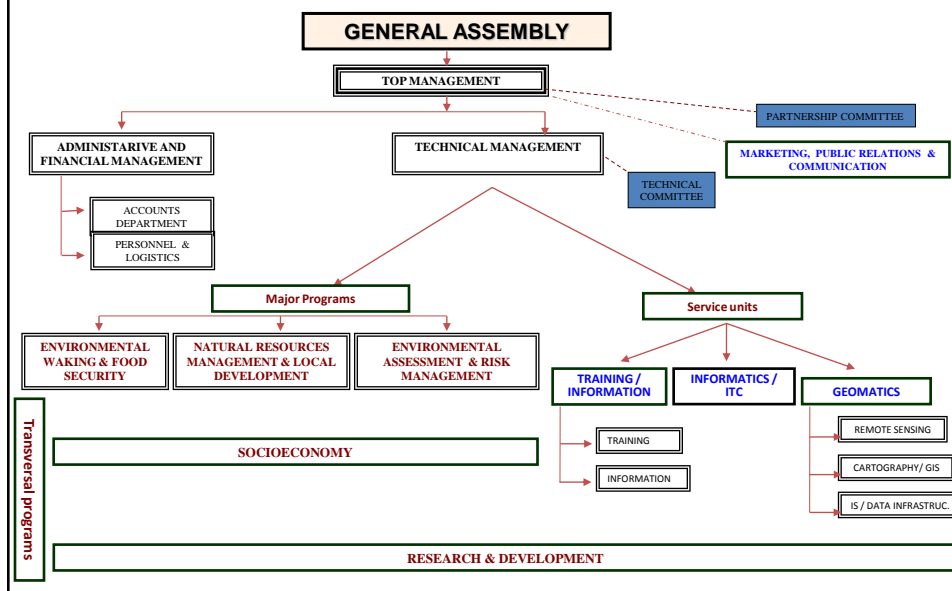
FONDS POUR L'ADAPTATION
ADAPTATION FUND

WHAT IS CSE

- **CSE** ➤ an information center for the environment, established in 1986
- **CSE** ➤ engaged in various research initiatives that focus on impact of climate change and climate variability
- **CSE** ➤ support environment policy to gradually integrate advanced technologies in decision-making process at all levels of public action.



ORGANIZATION CHART



WHAT IS CSE



- **CSE** ➤ support Senegalese Government actions in the framework of international environmental agreements and conventions.
- **CSE** ➤ involved in activities focusing on sustainable development (*fight against drought, desertification and land degradation, climate changes and its adverse effects, together with food security and poverty issues*) in Senegal as elsewhere.



THE ACCREDITATION: MILESTONES

- ✓ **Nomination for NIE by the Designated Authority**
- ✓ **Preparation and Submission of the Application**
- ✓ **Preliminary screening by the AF Secretariat**
- ✓ **Screening by the AF Accreditation Panel**
- ✓ **Accreditation by the Board during its 9th meeting**



“ADAPTATION TO COASTAL EROSION IN VULNERABLE AREAS”

Senegal National Project submitted to the Adaptation Fund

- Overall objective:

☛ *to contribute to the implementation of Senegal’s National Adaptation Plan of Action on Climate Change (NAPA)*

- Focusing on combating coastal erosion exacerbated by climate change and rising sea levels in three regions in Senegal



“ADAPTATION TO COASTAL EROSION IN VULNERABLE AREAS”

- Specific objectives :

***SO1:** protect the coastal areas of Rufisque, Saly, and Joal against erosion, with the aim to protect houses and the economic infrastructures (fish processing areas, fishing docks, tourism or cultural infrastructures) and restore lost or threatened activities;*

***SO2 :** fight the salinization of agricultural lands used to grow rice in Joal (anti-salt dikes);*

***SO3 :** Assist local communities of the coastal area of Joal, especially women, in handling fish processing areas of the districts located along the littoral ;*

***SO4 :** Communicate on the adaptation, sensitize and train local people on climate change adaptation techniques in coastal areas and on good practices, to avoid an aggravation of the various situations encountered;*

***SO5:** Develop and implement the appropriate regulations for the management of coastal areas.*



AGREEMENT SIGNING



Washington, November 11th, 2010



THANK YOU FOR YOUR ATTENTION

