



Agencia Nacional de Investigación e Innovación

**29 July - Climate Finance Readiness Seminar
for NIEs #2**

General Review



- ▶ The most relevant effect of climate change for the Uruguayan agricultural sector is the increase of climate variability and the frequency and intensity of extreme events such as droughts, floods, heat waves, storms.
- ▶ Such events generate immediate economic costs so the Ministry of Livestock, Agriculture and Fisheries decided to implement adaptation strategies to reduce vulnerability and build resilience in the agro-ecosystems.
- ▶ The project is part of the national adaptation planning agenda.

Objectives and Results



- ▶ The overall objective of the project is to contribute to building national capacity to adapt to climate change by focusing on critical sectors for the national economy
- ▶ Specifics objectives:
 - Reduce vulnerability and build resilience to CC for small farms engaged in livestock production located in the landscape units of the Basaltic Cuesta and East Hills
 - Strengthen local institutional networks targeting CC adaptation and response to extreme events

Objectives and Results

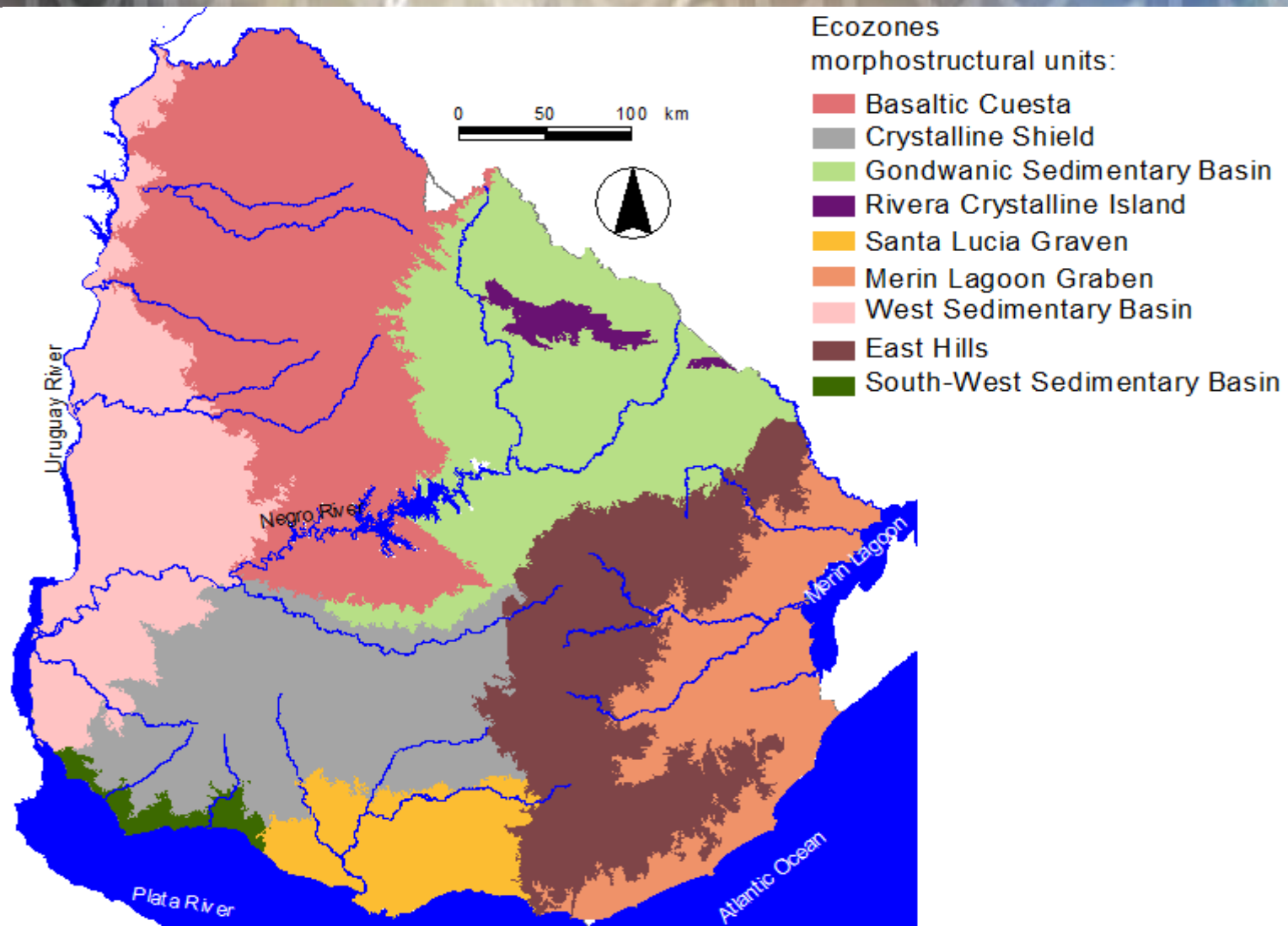


- Develop mechanisms for a better understanding of the impacts and variability of CC and identify best practices for adapting to CC

Specific Results:

- *1340 smallholders are benefited from farm sub-projects with a special focus on climate change adaptation*
- *Participatory evaluation of local capacities, follow-up and control actions regarding measures for CC*
- *Indexes and methodologies to monitor and evaluate climate change, research projects in order to face climate variability*

Basaltic Cuesta & East-Southeast Hills



Progress to date



- ▶ 561 projects approved
- ▶ Development of training technicians MGAP and agricultural institutions on strategic plan
- ▶ Development of a course to private technical formulators
- ▶ Development of a communication strategy with private technicians and farmers in monthly atheneums in the territory
- ▶ Public awareness on the need for adaptation strategies by smallholders
- ▶ Institutional agreements to perform the monitoring process on the ground
- ▶ Research of adaptation co-benefits of ecological intensification of beef production

Main issues - ANII as NIE



- Several meetings with different institutions before the project starts
- Signature of agreement between ANII and the Ministry of Livestock, Agriculture and Fisheries
- Inception Workshop MGAP and ANII and follow-up meetings between both institutions
- Project Operating Manual is done by the MGAP and approved by ANII – Request for transferring the first funds

Risk Assessment



- No demand for investments in adaptation: dissemination activities were carried out in the areas
- Agricultural organizations are not interested in participating in local networks: awareness initiatives were carried out in the area with farmer's organizations and the existing local networks
- Delays in funds disbursement discourage farmers from participating in the project: steps already done and in process to alleviate the risk are revision of the assessment and approval process and focusing human resources in critical stages of the process.

Advices – ANII as NIE

- To hire the General Management (CEO) the NIE must give their approval
- The challenge to anticipate to the problems based in the experience of the NIE in executing projects
- A razonable number of visits to sub-projects
- Monthly meetings between the Implementing Entity and the executor

El Proyecto GFCC se desarrolla en dos zonas del país con un alto porcentaje de productores ganaderos familiares, que producen sobre suelos superficiales con poca capacidad de retención de agua y poca capacidad de tolerancia ante períodos de sequía.



Convocatoria

a productores ganaderos
para presentación de proyectos

¿Cómo se accede al llamado?

- A través de la presentación de proyectos individuales o colectivos.
- Los mismos tendrán un plazo de ejecución de hasta 2 años y se financiarán de manera no reembolsable hasta el 80% de las actividades presentadas en el proyecto, con un monto máximo de hasta US\$ 8.000 por productor.
- Los proyectos deberán ser elaborados y presentados por técnicos privados registrados y habilitados ante la DGDR.

Las próximas fechas de cierre para la presentación
de proyectos serán:

17/1/2015 - 17/5/2015 - 17/9/2015

Por mas información:

Cuesta Basáltica y Sierras del Este



Bases y condiciones: www.mgap.gub.uy (solapa Desarrollo Rural)

Av. Eugenio Garzón 456, Montevideo
2309 4507 int. 214 / dacc@mgap.gub.uy

Proyecto GFCC
**Ganaderos Familiares
y Cambio Climático**









- ▶ Muchas gracias

- ▶ Beatriz Prandi
- ▶ Adjunta Secretaría Ejecutiva
- ▶ www.anii.org.uy
- ▶ bprandi@anii.org.uy