



Request for assistance in complying with the Fund's Environmental and Social Policy and Gender Policy

Submission Date: 29 August 2016

Adaptation Fund Grant ID:

Country: Antigua & Barbuda

Implementing Entity: Department of Environment

A. Timeframe of Activity

Expected start date of activity	November 15th, 2016
Completion date of activity	March 1st, 2017

B. Type of support requested

Describe the activities to be undertaken to support the compliance of the NIE with the Fund's Environmental and Social policy and Gender policy

Types of Support Activities	Support requested (please provide short description)	Type/name of provider for the requested support ¹	Requested budget (USD)
Development of procedures/manuals/guidelines for screening projects for environmental and social risks as well as gender-related risks Estimated time frame: 1 week	Sub-activities: 1. Review the DOE's ESS and Gender policies, including project screening and categorization processes, identify gaps, consult with the DOE on revisions and revise Policies, submit for approval to the PMC	Individual consultant	\$5,000
Development of procedures manual/guidelines for undertaking project environmental and social risk assessment, gender assessment, and for	2. Review the DOE Manual on the processing of Grants and Revolving Funds, identify gaps, develop figures and diagrams to facilitate implementation and	Individual consultant	\$15,000

¹ Specify if it is an institution, consulting firm or individual consultant. When possible, provide the name of the institution, firm or individual identified or selected.

<p>formulating risk management plans that are gender responsive</p> <p>Estimated timeframe: 3 weeks</p>	<p>compliance, consult with the DOE on revisions and submit to the PMC for approval</p> <p>3. Provide ESS and Gender technical backstopping and advisory services to the AF project management unit to finalize the Environmental and Social Management Plan, ensuring compliance with the AF ESS and Gender policies (Annex 1 for draft TOR)</p>		
<p>Training of select entity staff to carry out the relevant tasks related to the implementation of the Fund's Environmental and Social Policy and the Gender Policy</p> <p>Estimated timeframe: 1 week</p>	<p>4. Provide one training session to the Technical Advisory Committee (TAC) and the Project Management Committee (PMC) on the Adaptation Fund's 15 ESP Principles and on Gender in the context of Antigua and Barbuda's projects and adaptation targets (December 2016)</p> <p>5. Provide one training session to the AF project management unit on implementing and complying with the project's revised ESMP (December 2016)</p> <p>See Figure 1 for institutional arrangements.</p>	Individual consultant	\$5,000
Other type of support requested (please describe)			
Total Grant Requested (USD)			\$25,000

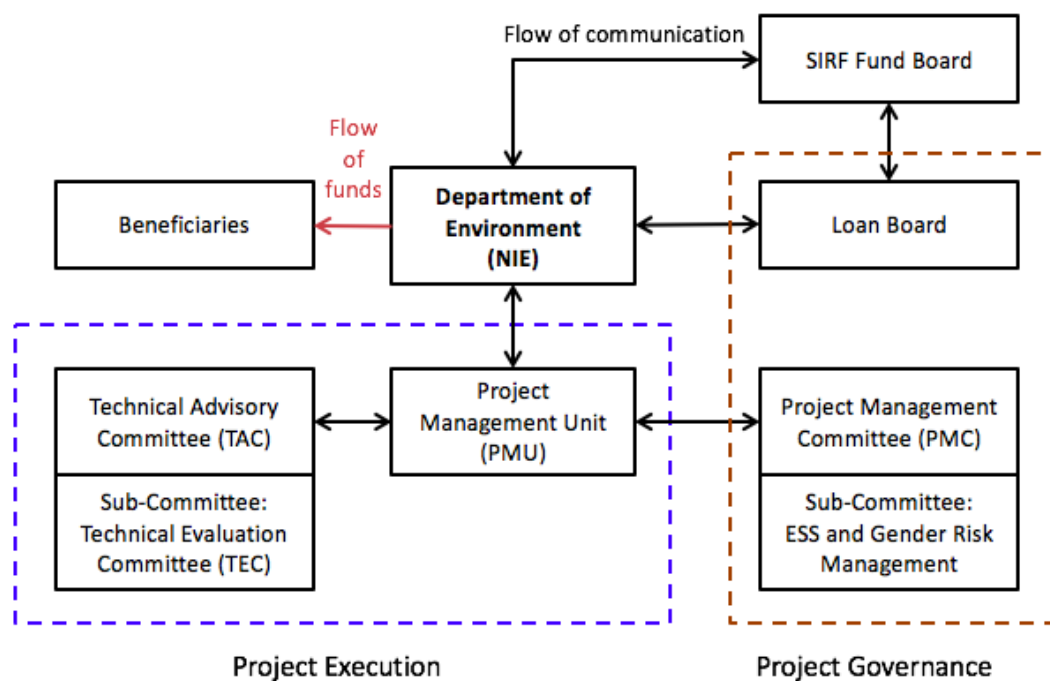



Figure 1. Draft institutional arrangements for the DOE's environmental and social compliance. Capacity building is needed in the TAC and PMC, and in the PMU

C. Implementing Entity

This request has been prepared in accordance with the Adaptation Fund Board's procedures

Head of Implementing Entity	Signature	Date (Month, day, year)	Implementing Entity Contact Person	Telephone	Email Address
Diann Black-Layne		November 2 nd 2016	Diann Black-Layne	+1 268 464-6410	dcblack11@gmail.com
		CC:	Lia Nicholson	+1 876 512-5885	nicholsonlia@gmail.com
		CC:			antiguaenvironmentdivision@gmail.com

D. Record of endorsement on behalf of the government

Provide the name and position of the government official, Designated Authority (DA) of the Adaptation Fund, and indicate date of endorsement. The DA endorsement letter must be attached as an annex to the request.

<i>Diann Black-Layne, Director, Department of Environment</i>	<i>Date: November 2, 2016</i>
---	-------------------------------

Annex 1. Draft Terms of Reference for the ESS Independent Consultant



Government of Antigua and Barbuda

Department of Environment
Ministry of Health and the Environment

Terms of Reference

Environmental Social Gender Safeguards Capacity Building

Contracting Authority:	Department of Environment, Ministry of Health and the Environment, Antigua and Barbuda
Consultancy Start date:	15 November 2016
Consultancy Duration:	20 days (if international – one in-country mission)
To Apply:	Please email the Project Manager at antiguaenvironmentdivision@gmail.com copied to dcblack11@gmail.com a cover letter and CV Subject: <i>Application – ESS and Gender Consultancy</i>
Deadline for applying:	10 November 2016

Introduction

Antigua and Barbuda is exposed economically, environmentally and socially to projected climate change impacts.² Temperature projections from a Regional Climate Model (RCM) indicate increases of 2.4° C to 3.2° C in mean annual temperatures by the 2080s.³ Analysis of climate change for the island also projects accelerated coastal erosion and inundation, lower average annual rainfall, increased rainfall intensity causing flooding and a likely increase in tropical storm intensity.

² The CARIBSAVE Partnership, 2015. *Draft Vulnerability Impact and Adaptation Analysis in the Caribbean (VIAAC): National Vulnerability Analysis for Antigua and Barbuda*. Prepared with funding from UNEP-ROLAC.

³ The CARIBSAVE Partnership, 2012. *The CARIBSAVE Climate Change Risk Atlas (CCCRA): Climate Change Risk Profile for Antigua and Barbuda*. Prepared with funding from DFID and AusAID, p. 14.

Climate models projecting hurricane trends have generally determined that there will be an increase in intensity, if not frequency, of hurricanes in the Atlantic and Caribbean.⁴ Hurricanes will pose an increasing threat to Antigua and Barbuda's economy.

Physical infrastructure in Antigua and Barbuda must be adapted to the dynamic threats of water scarcity, heavy rainfall events, and more intense storms and hurricanes. Antigua and Barbuda's Nationally Determined Contribution (NDC) adaptation targets, conditional upon receiving funding, are to:

1. By 2025, increase seawater desalination capacity by 50% above 2015 levels.
2. By 2030, all buildings are improved and prepared for extreme climate events, including drought, flooding and hurricanes.
3. By 2030, 100% of electricity demand in the water sector and other essential services (including health, food storage and emergency services) will be met through off-grid renewable sources.
4. By 2030, all waterways are protected to reduce the risks of flooding and health impacts.
5. By 2030, an affordable insurance scheme is available for farmers, fishers, and residential and business owners to cope with losses resulting from climate variability.

Implementing Adaptation NDC Targets

In October 2015, Antigua and Barbuda was accredited as a national implementing entity to the Adaptation Fund⁵, and the country is now submitting a direct access 10 M USD project to the Fund, titled, ***An integrated approach to physical adaptation and community resilience in Antigua and Barbuda's northwest McKinnon's watershed.***

The proposed project targets a populated watershed prone to flooding and climate change impacts on the northwest coast of Antigua – the McKinnon's pond watershed. The purpose of the project is to build an institutional and financial framework at the national level to meet the Intergovernmental Panel on Climate Change (IPCC) AR5 climate projections, and the northwest watershed will be a pilot demonstration project as it is a priority given its socio-economic, demographic and environmental characteristics, and it is well placed to provide lessons learned for the entire country.

The project seeks to reduce vulnerability of communities in the McKinnon's watershed by increasing the ability of the watershed to handle extreme rainfall, while increasing the resilience of the built environment simultaneously to cope with the multiple stressors of climate change. This integrated approach will support the community as a whole to withstand projected climate change impacts while the ecosystems accommodate increased extreme rainfall events.

The three specific objectives of the project, which align with the three components, are to:

1. Implement concrete adaptation actions for natural and physical drainage systems along 3 km or urban waterways to meet projected climate impacts of hydro-meteorological events and disease vectors

⁴ *Ibid*, p. 28.

⁵ Adaptation Fund's Environmental and Social Policy: <http://www.adaptation-fund.org/wp-content/uploads/2015/09/Environmental-Social-Policy-approved-Nov2013.pdf>

2. Disburse concessional loans through the Revolving Fund to vulnerable households to meet adaptation standards for built infrastructure to withstand extreme climate variability
3. Support social adaptive capacity and local ownership of adaptation through climate resilient community infrastructure and contracting community groups to maintain project interventions

The project preparation phase is underway and an Environmental and Social Safeguards (ESS) (including Gender) Impact Assessment has been conducted. This is a consultancy to provide technical backstopping for the DOE in the development of an Environmental and Social (including Gender) Management Plan, and capacity building in ESS to support the Department of Environment to comply with the Adaptation Fund's Environmental and Social Policy. The DOE will submit the full project proposal to the Adaptation Fund Board by early January 2017. The project document, baseline studies and documentation will be made available to the consultant.

Objective

The goal of this consultancy is to strengthen systems that ensure adaptation funding reaches the most vulnerable people in Antigua and Barbuda and that potential negative impacts are mitigated to the fullest extent possible and equitably maximize positive impacts to beneficiaries.

The objective of this consultancy is to build capacity of key adaptation implementers in Antigua and Barbuda to comply with the Adaptation Fund (AF) and the Green Climate Fund (GCF) policies on Environmental and Social Safeguards and Gender.

Responsibilities

1) Capacity Building in Environmental, Social and Gender Safeguards

The consultant will review the DOE's draft Environmental and Social Policy and Gender Policy, make recommendations to strengthen areas for compliance with AF and GCF Policies, and implement two trainings/workshops focusing on the Adaptation Fund's 15 ESP Principles, through an in-country mission to address capacity gaps through training key adaptation stakeholders.

Key adaptation stakeholders in Antigua and Barbuda include the Department of Environment (DOE), the Directorate of Gender Affairs, the Community Development Division, the Development Control Authority, Public Works Department, Lands, the Disaster Office, and civil society groups.

2) Technical advisory services in Environmental Social and Gender Risk Management Plan

The consultant will demonstrate the ESS and Gender Policies in action through working with the Department of Environment to review the environmental and social management plan for risks identified in the Environmental and Social Impact Assessment of the Adaptation Fund project currently being development by the DOE.

The consultant will provide a technical backstopping role to ensure that the Management Plan comprehensively identifies those measures necessary to avoid, minimize, or mitigate the potential environmental and social risks, in compliance with the Adaptation Fund's ESS Policy. The management plan will be the basis for monitoring and evaluation (M&E) throughout project implementation.

Specific areas to be covered by the management plan include:

- An integrated management strategy across the three components of the project
- Identify propose means of strengthening the mechanisms through which the project will ensure compliance with the Adaptation Fund Environmental and Social Policy
- Specific risk management tasks for managing any impacts to marginalized and vulnerable groups in the project site
- Develop a plan for managing any potential risks of resettlement for livelihoods impacts
- Clearly assigned responsibilities for monitoring, supervision, and evaluation of risks, including developing tools, checklists, and other necessary material
- Recommendations for appropriate communications and dissemination strategies to reach targeted audiences

Deliverables

- ✓ Revised and validated DOE Environmental and Social Safeguards Policy
- ✓ Revised and validated DOE Gender Policy
- ✓ Revised and validated DOE Manual on the Processing of Grants and Revolving Funds
- ✓ Workshop report on in-country training
- ✓ A revised Environmental and Social Management Plan

Expertise

Required expertise:

- ✓ Advanced university degree in the social sciences, gender, natural resources management or relevant field
- ✓ At least five (5) years of relevant experience in developing and implementing ESMPs
- ✓ Working knowledge of the Adaptation Fund and the GCF's Environmental and Social Policies and Gender Policies
- ✓ Experience in compliance with the IFC's Performance Standards is a plus
- ✓ Expertise in climate change adaptation knowledge and solutions is required
- ✓ Previous work experience in small island developing states is a preferred, in particular the Caribbean region

Evaluation Criteria

Category	Description		Max. Score
1	Qualifications of consultant:	Associates Degree in related field - 5	20

	• Advanced university degree in social sciences, gender, natural resources management or relevant field of study;	Bachelors Degree in Related Field - 5	
		MSc / PhD in Related Field - 10	
2	Experience with similar technical work and track record of success	At least seven (7) years of relevant experience in developing project documents and ESMPs - 10	
		Working knowledge of the Adaptation Fund's Environmental and Social Policy and Gender Policy - 10	40
		Experience in compliance with the IFC's Performance Standards is a plus - 5	
		Expertise in climate change adaptation knowledge and solutions is required - 5	
4	Miscellaneous	Excellent written and verbal communication skills and an ability to interact and communicate effectively with senior government staff - 5	10
		Fluency in English - 5	
5	Compliance to TOR Requirements	<i>Technical Proposal</i> : description of proposed work plan, methodology, risks and mitigation measures (max. 2 pages) and CV(s) – 20	30
		<i>Financial Proposal</i> - 10	
		Total	100



GOVERNMENT OF ANTIGUA AND BARBUDA

Department of Environment
Ministry of Health and the Environment
#1 Victoria Park, Botanical Garden
P.O. Box W693
St. John's
Antigua, W.I.
Tel: (268) 462-6265
Fax: (268) 462-4625
Email: antiguaenvironmentdivision@gmail.com

August 31, 2016

The Adaptation Fund Board
c/o Adaptation Fund Board Secretariat
1818 H Street NW, Washington DC, 20433
Secretariat@Adaptation-Fund.org
Fax: 202 522 3240/5

RE: ENDORSEMENT FOR ESP & GENDER TECHNICAL ASSISTANCE GRANT FOR ANTIGUA & BARBUDA

Dear Adaptation Fund Secretariat,

I hereby support the application submitted by the Department of Environment (DoE), as NIE to the Adaptation Fund (AF), to request Readiness support to build capacity in Environmental & Social Safeguards (ESS) and Gender.

Since January 2016, the DoE has been working closely with the AF Secretariat to develop a direct access project to implement climate adaptation in Antigua's northwest McKinnon's watershed. This project proposal has gone through several iterations, and we thank the Secretariat's support through the process. Based on lessons learned, it is evident that the DoE project staff would significantly benefit from Readiness support to revise the DoE's ESS policy to better align with the key areas of the AF, as well as its gender policy. Specifically, the following activities will be extremely beneficial: screening projects for environmental and social risks, undertaking project environmental and social risk assessment and formulating risk management plans; public disclosure and consultation; and training to carry out implementation.

I thank you for your favourable consideration of the Readiness application.

Sincerely,

Director
Department of Environment