



ADAPTATION FUND

AFB/PPRC.25/16
30 September, 2019

Adaptation Fund Board
Project and Programme Review Committee
Twenty-Fifth Meeting
Bonn, Germany, 7-9 October, 2019

Agenda Item 4 m)

PROPOSAL FOR INDONESIA (2)

Background

1. The Operational Policies and Guidelines (OPG) for Parties to Access Resources from the Adaptation Fund (the Fund), adopted by the Adaptation Fund Board (the Board), state in paragraph 45 that regular adaptation project and programme proposals, i.e. those that request funding exceeding US\$ 1 million, would undergo either a one-step, or a two-step approval process. In case of the one-step process, the proponent would directly submit a fully-developed project proposal. In the two-step process, the proponent would first submit a brief project concept, which would be reviewed by the Project and Programme Review Committee (PPRC) and would have to receive the endorsement of the Board. In the second step, the fully-developed project/programme document would be reviewed by the PPRC, and would ultimately require the Board's approval.

2. The Templates approved by the Board (Annex 5 of the OPG, as amended in March 2016) do not include a separate template for project and programme concepts but provide that these are to be submitted using the project and programme proposal template. The section on Adaptation Fund Project Review Criteria states:

For regular projects using the two-step approval process, only the first four criteria will be applied when reviewing the 1st step for regular project concept. In addition, the information provided in the 1st step approval process with respect to the review criteria for the regular project concept could be less detailed than the information in the request for approval template submitted at the 2nd step approval process. Furthermore, a final project document is required for regular projects for the 2nd step approval, in addition to the approval template.

3. The first four criteria mentioned above are:

- (i) Country Eligibility,
- (ii) Project Eligibility,
- (iii) Resource Availability, and
- (iv) Eligibility of NIE/MIE.

4. The fifth criterion, applied when reviewing a fully-developed project document, is:
(v) Implementation Arrangements.

5. It is worth noting that at the twenty-second Board meeting, the Environmental and Social Policy (ESP) of the Fund was approved and at the twenty-seventh Board meeting, the Gender Policy (GP) of the Fund was also approved. Consequently, compliance with both the ESP and the GP has been included in the review criteria both for concept documents and fully-developed project documents. The proposal template was revised as well, to include sections requesting demonstration of compliance of the project/programme with the ESP and the GP.

6. At its seventeenth meeting, the Board decided (Decision B.17/7) to approve "Instructions for preparing a request for project or programme funding from the Adaptation Fund", contained in the Annex to document AFB/PPRC.8/4, which further outlines applicable review criteria for both concepts and fully-developed proposals. The latest version of this document was launched in conjunction with the revision of the Operational Policies and Guidelines in November 2013.

7. Based on the Board Decision B.9/2, the first call for project and programme proposals was issued and an invitation letter to eligible Parties to submit project and programme proposals to the Fund was sent out on April 8, 2010.
8. According to the Board Decision B.12/10, a project or programme proposal needs to be received by the secretariat no less than nine weeks before a Board meeting, in order to be considered by the Board in that meeting.
9. The following project concept document titled “Sustainable Livelihood and Ecoenterprise in Karst Ecosystem for Adapting to Climate Change” was submitted for Indonesia by the Partnership for Governance Reform in Indonesia (Kemitraan), which is the National Implementing Entity of the Adaptation Fund.
10. This is the first submission of the proposal using the two-step submission process.
11. The current submission was received by the secretariat in time to be considered in the thirty-fourth Board meeting. The secretariat carried out a technical review of the project proposal, assigned it the diary number IDN/NIE/NRM/2019/1, and completed a review sheet.
12. In accordance with a request to the secretariat made by the Board in its 10th meeting, the secretariat shared this review sheet with Kemitraan, and offered it the opportunity of providing responses before the review sheet was sent to the PPRC.
13. The secretariat is submitting to the PPRC the summary and, pursuant to decision B.17/15, the final technical review of the project, both prepared by the secretariat, along with the final submission of the proposal in the following section. In accordance with decision B.25.15, the proposal is submitted with changes between the initial submission and the revised version highlighted.



ADAPTATION FUND

ADAPTATION FUND BOARD SECRETARIAT TECHNICAL REVIEW OF PROJECT/PROGRAMME PROPOSAL

PROJECT/PROGRAMME CATEGORY: Regular-sized Project Concept

Country/Region:	Indonesia	
Project Title:	Sustainable Livelihood and Ecoenterprise in Karst Ecosystem for Adapting to Climate Change	
Thematic Focal Area:	Food security / Agriculture	
Implementing Entity:	Partnership for Governance Reform in Indonesia (Kemitraan)	
AF Project ID:	IDN/NIE/NRM/2019/1	
IE Project ID:		Requested Financing from Adaptation Fund (US Dollars): 1,048,636
Reviewer and contact person:	Dirk Lamberts	Co-reviewer(s): Ming Yang, Saliha Dobardzic
IE Contact Person:	Dewi Rizki	

Technical Summary

The karst region of Maros-Pangkep is the largest and one of the most biodiverse karst areas in the Asia-Pacific region with great ecological, economic and cultural significance and potential.

The main objective of this program is to increase the adaptation efforts of people living in the world's largest karst

ecosystem, which are part of climate change adaptation efforts focused on:

1. Enhance the accessibility of food security by subsistence to sustenance adapting for the impact of climate change on the karst ecosystem.
2. Strengthen regional planning and policy for climate change adaptation actions in the karst ecosystem;
3. Knowledge management and dissemination of climate change adaptation actions in the karst ecosystem.

The initial technical review found that, while the project concerns an important area, the adverse impacts of climate change on the project area and the ensuing adaptation needs are not entirely clear. The forecast 17% increase in annual precipitation will lead to drought and damaging flooding but how this will affect beneficiaries in the karst environment is not clear.

	<p>The description of the project components does not provide much information on the activities the project intends to undertake, and there are various sections of the proposal that require strengthening the reasoning and the level of information. As a general comment, the project document is written in language that is often not clear, which make it somewhat challenging to review. It may be helpful in the future revisions to use more clear and precise language and ensure the proposal is edited for clarity and simplicity. Please refer to the corrective action and clarification requests (CAR, CR) noted in the review.</p> <p>The initial review raised several issues related to the nature and suitability of the proposed measures with respect to the climate threats identified, to the technical specifications of the proposed interventions, and to the compliance of the project with the Adaptation Fund Environmental and Social Policy and the Gender Policy among others, as discussed in the number of Clarification Requests (CR) and Corrective Action Requests (CAR) raised in the review.</p> <p>The final review finds that the concept note document has not addressed most of the requests and does not provided sufficient information at this stage. The following observations are made:</p> <ul style="list-style-type: none"> i. The proposal should clarify and elaborate on the nature of the project activities in the relevant section of the proposal. ii. The proposal should clarify how the training and meeting activities are sufficiently embedded in other activities that will ensure their uptake and contribution to lasting and relevant capacity building. iii. The proposal should clarify the economic, social, and environmental benefits of the project to the local beneficiaries. iv. The proposal should provide the findings of the gender analysis that was carried out. v. The proposal should clarify the cost effectiveness of the project. vi. The proposal should carry out consultations as required and include the consultation outcomes in the project design. vii. The proposal should clarify how the requested financing is justified based on the full cost of adaptation reasoning. viii. The proposal should include a substantiation of the ESP risk findings for the project in line with the ESP. ix. The proposal should include a complete budget.
Date:	11 September 2019

Review Criteria	Questions	Comments 25 August 2019	Comments 11 September 2019
Country Eligibility	1. Is the country party to the Kyoto Protocol?	Yes. Indonesia ratified the Kyoto Protocol on 3 December 2004.	
	2. Is the country a developing country particularly vulnerable to the adverse effects of climate change?	Yes. Indonesia is a developing country party in the UNFCCC. In the country, climate change has significantly affected sustainable economic development in general and the forest and food production in particular. Climate change is exacerbating these problems.	
Project Eligibility	1. Has the designated government authority for the Adaptation Fund endorsed the project/programme?	Yes.	
	2. Does the length of the proposal amount to no more than Fifty pages for the project/programme concept, including its annexes; or One hundred pages for the fully-developed project document, and one hundred pages for its annexes?	Yes.	
	3. Does the project / programme support concrete adaptation actions to assist the country in addressing adaptive capacity to the adverse effects of	Not clear. The adverse impacts of climate change on the project area and the ensuing adaptation needs are not entirely clear. The forecast 17% increase in annual precipitation will lead to drought and	

	<p>climate change and build in climate resilience?</p>	<p>damaging flooding but how this will affect beneficiaries in the karst environment is not clear.</p> <p>CR 1: Please clarify the adverse effects of climate change on the beneficiaries so that the justification for the proposed interventions becomes clear.</p> <p>The description of the project components does not provide much information on the activities the project intends to undertake. The activities of component 1 lack cohesion, both amongst the activities as towards achieving project objectives. From the description of the project components, it is unclear which activities will be undertaken by the project under component 2. The activities of component 3 (on knowledge management) are said to be “carried out in order to ensure the sustainability of the climate change adaptation objectives”. Only in the detailed budget (Annex 4) are concrete project activities listed.</p> <p>CR 2: Please clarify and elaborate on the nature of the project activities in the relevant section of the proposal.</p> <p>A large share of the requested funding for activities is earmarked for meeting</p>	<p>CR 1: Sufficiently clarified at concept stage.</p> <p>CR 2: Not adequately addressed.</p>
--	--	---	--

		<p>related expenses (e.g. 'full board meetings' stipends alone amount to 10% of overall budget).</p> <p>CR 3: Please clarify how the training and meeting activities are sufficiently embedded in other activities that will ensure their uptake and contribution to lasting and relevant capacity building.</p>	CR 3: Not addressed.
	<p>4. Does the project / programme provide economic, social and environmental benefits, particularly to vulnerable communities, including gender considerations, while avoiding or mitigating negative impacts, in compliance with the Environmental and Social Policy and Gender Policy of the Fund?</p>	<p>Not clear at this time. Section B on p. 11 needs to be revised, providing quantitative information to describe the economic, social, and environmental benefits of the project to the local beneficiaries.</p> <p>CR 4: Please clarify the economic, social, and environmental benefits of the project to the local beneficiaries</p> <p>No initial gender assessment is reported to have been carried out as part of the preparation of this project.</p> <p>CAR 2: Please carry out an adequate gender assessment to inform project design, in compliance with the ESP and the GP.</p> <p>The project aims to have 30% of beneficiaries to be women.</p>	<p>CR 4: Not adequately addressed.</p> <p>CAR 2: Not adequately addressed. In Section II.B information has been added on a gender analysis that has been carried out but no analysis findings are presented.</p>

		CR 5: Please clarify the reason for setting the target for involvement of women as project beneficiaries at 30%.	CR 5: Clarified. The 30% women involvement target was set in line with a provincial development plan.
	5. Is the project / programme cost effective?	Not clear at this time. It is difficult to assess if the project is cost effective based on the information provided. The description of cost-effectiveness of the project in II.C does not provide data, assumptions or the methodology used for assessing cost effectiveness. CR 6: Please clarify the cost effectiveness of the project.	CR 6: Not adequately addressed. The clarification of cost effectiveness of the project should be done by comparison analysis of different project scenarios.
	6. Is the project / programme consistent with national or sub-national sustainable development strategies, national or sub-national development plans, poverty reduction strategies, national communications and adaptation programs of action and other relevant instruments?	Yes, there is consistency with the strategies described.	
	7. Does the project / programme meet the relevant national	To some extent. The relevant section of the proposal lists a number of relevant regulations. However, these appear to	

	technical standards, where applicable, in compliance with the Environmental and Social Policy of the Fund?	<p>be incomplete, and e.g. do not include national requirements for environmental or social safeguarding.</p> <p>CR 7: Please complete the overview of national technical standards that are applicable to the project and clarify how the project will comply with these.</p>	CR 7: sufficiently clarified at this stage. The full proposal will need to present not only a list of the relevant national technical standards but also explain how the project will comply with these.
	8. Is there duplication of project / programme with other funding sources?	The proposal states that there is no duplication with other funding sources. At the same time, it does not provide an overview of other ongoing or planned activities in the same sector or target area. It is recommended for a full proposal to include such an overview, also to identify possible synergies.	
	9. Does the project / programme have a learning and knowledge management component to capture and feedback lessons?	Yes, the project does include a learning and knowledge management component.	
	10. Has a consultative process taken place, and has it involved all key stakeholders, and vulnerable groups, including gender considerations in compliance with the Environmental and Social Policy and	<p>Unclear, but it appears that no consultation has taken place so far.</p> <p>CAR 3: Please carry out consultations as required and include the consultation outcomes in the project design.</p>	CAR 3: Not adequately addressed. The additional table on consultations is very limited and does not provide the required information.

	Gender Policy of the Fund?		
	11. Is the requested financing justified on the basis of full cost of adaptation reasoning?	<p>Probably yes, although it cannot be definitely concluded based on the limited description of the project activities in response to the beneficiaries' adaptation needs.</p> <p>CR 8: Please clarify how the requested financing is justified based on the full cost of adaptation reasoning.</p>	CR 8: Not addressed.
	12. Is the project / program aligned with AF's results framework?	Yes.	
	13. Has the sustainability of the project/programme outcomes been taken into account when designing the project?	<p>To some extent. However, there are substantial gaps in the description of how sustainability has been considered in the design of the project activities. The relevant section of the proposal only provides generic references to sustainability. Specific information on the sustainability of project interventions, such as the insurance payments or the operation of the nurseries, is lacking.</p> <p>CR 9: Please clarify how the project outcomes will be sustained beyond the project duration.</p>	CR 9: Sufficiently addressed at this stage. A full proposal would need to further elaborate and substantiate the sustainability of the project outcomes.
	14. Does the project / programme provide an	No. The relevant table in II.K has been completed but the substantiation of the	

	<p>overview of environmental and social impacts / risks identified, in compliance with the Environmental and Social Policy and Gender Policy of the Fund?</p>	<p>findings is lacking. Annex 7 presents an environmental and social management plan, which contradicts the finding that the project has no ESP related risks. Some risk findings include some substantiation in this section but not in way compliant with the ESP.</p> <p>CAR 4: Please include a substantiation of the ESP risk findings for the project in line with the ESP.</p> <p>The project is classified as a category C project for ESP purposes. Category C is reserved for projects without adverse environmental or social impacts. So far, the proposal does not demonstrate the absence of such impacts.</p> <p>CR 10: Please clarify the ESP category finding for the project or adjust as appropriate.</p>	<p>CAR 4: Not addressed.</p> <p>CR 10: Addressed.</p>
Resource Availability	<p>1. Is the requested project / programme funding within the cap of the country?</p>	<p>Yes.</p>	
	<p>2. Is the Implementing Entity Management Fee at or below 8.5 per cent of the total project/programme budget before the fee?</p>	<p>The IE management fee seems to have been omitted from the budget.</p> <p>CAR 5: Please check the budget and adjust as required.</p>	<p>CAR 5: Unclear. The budget for component 2 has now been reduced by USD 10,000 and a 4th component added to the overall budget "Coordination with national implementing entity" with a budget of USD10,000.</p>

	3. Are the Project/Programme Execution Costs at or below 9.5 per cent of the total project/programme budget (including the fee)?	The project execution cost is currently at 8.7% of the total project budget but please refer to CAR 5.	
Eligibility of IE	4. Is the project/programme submitted through an eligible Implementing Entity that has been accredited by the Board?	Yes. Kemitraan is an accredited NIE.	
Implementation Arrangements	1. Is there adequate arrangement for project / programme management, in compliance with the Gender Policy of the Fund?	n/a at concept stage	
	2. Are there measures for financial and project/programme risk management?	n/a at concept stage	
	3. Are there measures in place for the management of for environmental and social risks, in line with the Environmental and Social Policy and Gender Policy of the Fund?	n/a at concept stage	

	4. Is a budget on the Implementing Entity Management Fee use included?	n/a at concept stage	
	5. Is an explanation and a breakdown of the execution costs included?	n/a at concept stage	
	6. Is a detailed budget including budget notes included?	n/a at concept stage	
	7. Are arrangements for monitoring and evaluation clearly defined, including budgeted M&E plans and sex-disaggregated data, targets and indicators, in compliance with the Gender Policy of the Fund?	n/a at concept stage	
	8. Does the M&E Framework include a break-down of how implementing entity IE fees will be utilized in the supervision of the M&E function?	n/a at concept stage	
	9. Does the project/programme's results framework align with the AF's results framework? Does it include at least one core	n/a at concept stage	

	outcome indicator from the Fund's results framework?		
	10. Is a disbursement schedule with time-bound milestones included?	n/a at concept stage	



ADAPTATION FUND

PROJECT/PROGRAMME PROPOSAL TO THE ADAPTATION FUND

PART I: PROJECT/PROGRAMME INFORMATION

Project/Programme Category	: Small-Sized Project/Programme
Country/ies	: Indonesia
Title of Project/Programme	: Sustainable Livelihood and Ecoenterprise in Karst
Type of Implementing Entity	: Ecosystem for Adapting to Climate Change
Implementing Entity	: National Implementing Entity
Executing Entity/ies	: Kemitraan (Partnership)
	: Konsorsium Adaptasi Ekosistem Karst (KARST)
Amount of Financing Requested:	: \$ 1,048,636

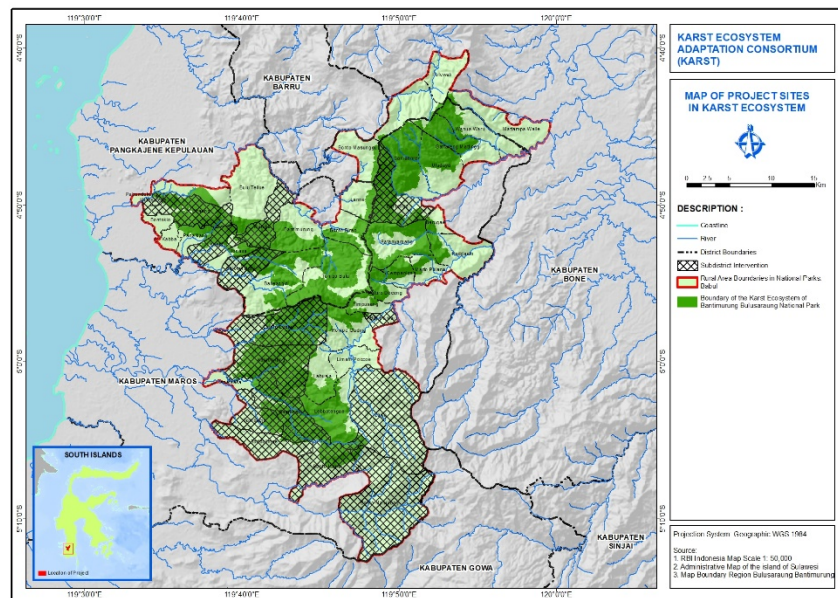
PROJECT / PROGRAMME BACKGROUND AND CONTEXT:

The National Medium-Term Development Plan (RPJMN) for Indonesia 2014-2019, aimed specifically at improving forest conservation and governance, aims at: optimizing the management of conservation areas covering 20.63 million d hectares, including the protection of karst, peat and mangrove areas.

The Karst Maros-Pangkep region in southern Sulawesi is the largest and most beautiful karst area after southern China¹. The United Nations Educational, Scientific and Cultural Organization (UNESCO) has proposed that the Maros-Pangkep Karst become a World Heritage status. The karst region of Maros-Pangkep is also one of the most biodiverse karst areas in the Asia-Pacific region.²

¹ Bantimurung Bulusaraung National Park

² LIPI Press Confirmation, <https://nasional.kompas.com/read/2012/02/15/02452399/selvation.vegetasi.karst.strategy>



This karst region extends from north to south in the administrative area of Maros, Pangkep and Bone Regency. In terms of formation, this karst region is made up of forests on limestone with forest formations of cliffs and slopes. The karst area is an area that is home to a natural habitat and is unique in terms of biodiversity conservation², a region known as the "**The Kingdom of Butterfly**".

The karst area of **43,433.85 ha** is located in the Regency Administrative Region of Maros, with 28,532.39 ha (65,691%) in the Kab region. Pangkep covers an area of 14,445.75 ha (33,259%) and Kab. Bone 455.69 ha (1.049%). **These karts are located in 8 watersheds, which serve a total of 15,879 households** comprising 11,790 households in 5 sub-districts of Maros (Bantimurung, Simbang, Tompobulu, Cenrana and Mallawa) and 4,089 households in 3 districts of Pangkep District. (Balocci, Minasatene and Tondong Tallasa) **meet basic water supply needs and at least 26 604 ha of agricultural land and 6 658 ha of plantations.** (See Annex 5. Maps)

1. Enviromental Context and Climate Change Impact



The Karst Maros-Pangkep and the Bulusaraung mountain complex are also watersheds and upstream areas of various rivers of Maros, Pangkep, including the rivers Puteh and Walannae / Lake Tempe. In addition, this region is also home to unique, endemic and rare flora and fauna, and only exists in this region³. Karst has a unique and strategic hydrological potential, particularly in the form of the karst

region's ability to store large amounts of water. The water body is located below the surface in the form of a flow in the form of an underground river system.

³ LIPI Press Confirmation, <https://nasional.kompas.com/read/2012/02/15/02452399/selvation.vegetasi.karst.strategy>

The water found in the karst area of Maros-Pangkep should be properly used by the community to meet its daily water needs and help with irrigation for irrigation of rice fields and other needs in the area surrounding the Karst from Maros-Pangkep.

Biodiversity containing a variety of endemic living in the karst region of Maros-Pangkep. In the fauna, we find species of black monkeys (*Macaca maura*), cuscus bear (*Ailurops ursinus*), small cuscus (*Stigocuscus celebensis*), the smallest primana of the world (*Tarsius specter*) and Sulawesi Ranggong (*Rhyticeros Bird*). In addition, there are also about 103 types of butterflies, some of which are endemic and protected in the Bantimurung tourist forest. The types of endemic flora Sulawesi present in the karst region of Maros-Pangkep are black wood (*Dispyros celebica*)⁴.

The high biodiversity and dependence of the surrounding community on karstic ecosystems such as water and other livelihoods have been affected by climate change. Climate change is leading to a productivity decline of up to 50% for farmers⁵. served by the karst ecosystem of Maros-Pangkep. **This is seen in the production of 18 sacks of rice. Today, farmers can only get 9 bags in the region.** Previously, farmers could only harvest two or even three times, and only once a year during the rainy season. **This decline in productivity is caused by climate change during most of the year, increased plant pest attacks and damage to paddy crops from floods, and the difficulty of impacting climate change. Community agriculture. farmers dry yields of grain yields.** The water crisis is now a problem for local residents. This once dry area has now begun to experience a water crisis during the dry season⁶

Reduced water supply in the karst region of Maros-Pangkep also encourages farmers to practice shifting cultivation, by searching for potential water sources around the area that impact on the increasing encroachment of forests for the Agriculture. Another impact is the increased potential for fires due to rising temperatures. **In 2015, forest fires had devoured tens of hectares of forest in the Bantimurung National Park area**⁷.



s in Pangkep

This situation can certainly cause flooding during the rainy season and drought during the dry season. Therefore, adaptation is necessary to overcome and minimize potential risks. In addition, **in his press release, Makassar Region VI of the Center for Meteorology, Climatology and Geophysics (BBMKG) said that, in the face of climate change, people should be vigilant, especially those who were**

operating a farming or planting business because of the threat of a bad harvest⁸. In the context of natural resources, climate uncertainty has

also changed significantly. This ensures that the vegetation around and within the karstic ecosystem does not flower and does not bear fruit, which has a derivative impact on the availability of food for animals living in this ecosystem. This causes conflicts over food needs between humans and animals in the karst ecosystem. **It**

⁴ Bantimurung Bulusaraung National Park

⁵ Mongabay

⁶ TLKM Survey Results (2017)

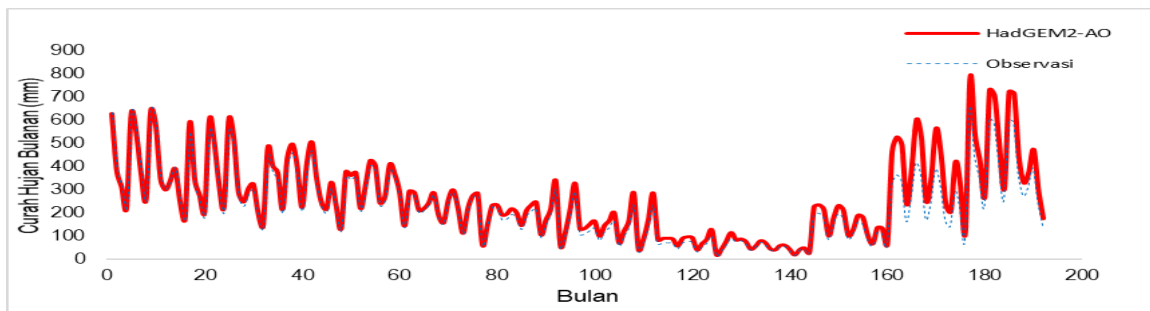
⁷ Mongabay

⁸ Merdeka.com (2018)

was noted that meeting the community with wild animals from the forest due to the need for food represented 51% of the community meeting these animals in fields or gardens⁹.

This ensures that the vegetation around and within the karstic ecosystem does not flower and does not bear fruit, which has a derivative impact on the availability of food for animals living in this ecosystem. This causes conflicts over food needs, between humans and animals in the karst ecosystem. The intensity of encounter with the community with animals originating from the forest was recorded due to the need for food of 51% of the community meeting the monkeys in their fields or gardens, 32% of the people having met the wild boar in their fields or their gardens and 17% of people who did not encounter any animals in their fields or gardens¹⁰.

In addition, it is expected that the average amount of rainfall in the Karst Maros-Pangkep region will increase by 17% in the future. The precipitation trend corresponds to the 8.56% increase in surface flow and flow of the Karts River in Maros-Pangkep. Rainfall changes in the future also have an impact on the hydrological conditions of a region. This indicates that a 1% increase in precipitation can increase from 1% to 4% of runoff.



The climate change projection scenario from 2018 to 2050 shows an increase in average precipitation of 17% over the next 33 years compared to the average effective rainfall from 1981 to 2013. This indicates that over the next 33 years, the losses due to changes the climate in the Maros-Pangkep go-kart region will be even better, particularly in the agricultural sector¹¹.

Increase average precipitation of 17% in condition of the Maros-Pangkep Karst Area to the projected changes in rainfall above has the potential to cause flooding as a result of agricultural land (rice fields) that are flooded with water. This makes the community suffered heavy losses due to crop failure, and reduces the source of community income, resulting increase amount of poor people in the Maros-Pangkep Karst Area.

Table 1. Disaster Intensity by Type

Type of Disaster	Disaster Location (District)	Disaster Intensity
Flood	Maros	5 time
	Pangkep	5 time
	Bone	17 time
Drought	Maros	2 time
	Pangkep	4 time
	Bone	8 time
Tornado	Maros	10 time
	Pangkep	24 time
	Bone	15 time

⁹ Conflict assessment report of TN. Babul (2014)

¹⁰ Conflict assessment report of TN. Babul TN. Babul (2014)

¹¹ Results of Global Weather Data Analysis as baseline / observation data (<http://globalweather.tamu.edu/>), using 27 Global Weather stations located around the area that affect the Saddang watershed area, 2017

Landslide	Maros	0 time
	Pangkep	1 time
	Bone	2 time

Source: bnpb.go.id

The table above presents data on disasters over the past ten years, from 2009 to 2018. Disasters in the Karos Maros-Pangkep region were not only landslides, floods and droughts, but also appearance of a growing potential for tornadoes.

Figure 1 (mean mm / yr) of the Bantimurung Bulusaraung National Park region, based on the RCP 4.5 scenario, presents the projection of the above rainfall variations based on the spatial distribution model. in 2030 (d) HadGEM2-AO model, compared to precipitation from the RCP 4.5 scenario model. The color gradation shows that the drier the blue zone, the more humid the zone will be.

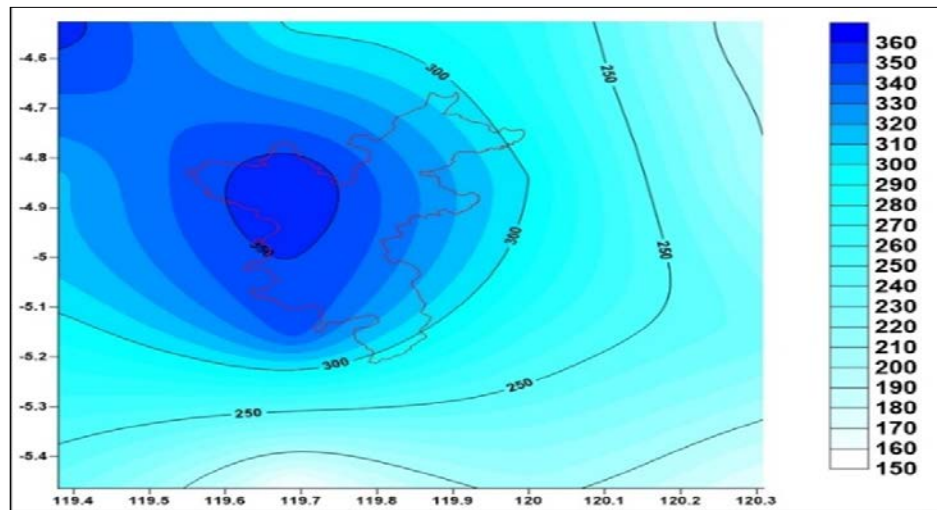


Figure 4. Scenario 4.5 of the HadGEM-AO Model

The increase in rainfall occurred at the end of 2018 and at the beginning of 2019 months the value of the actual rainfall was 403.29 mm to 487.96 mm. This proves that the increase has caused flooding, one of which is in Simbang District, Sambueja Village. It is one of the villages with the worst flood conditions in Maros Regency.

Table 2. Project intervention areas

Districts	Intervention Area (Village)	
Maros	Bireng Leang – Leang Samangki Labuaja Bonto Manai	Bonto Manurung Toddolimae Baji pa mai Laiya Mallawa
Pangkajene dan Kepulauan	Balocci Baru Kassi Biraeng	Minasatene Malaka

2. Socio-Economic Context

The majority of the inhabitants of Maros-Pangkep Karst region **work as farmers and have a low level of education**¹². The number of people in the target area represents 34.71% of the total population of the regency of Maros-Pangkep. The number of heads of households (KK) in 10 Intervesi villages of the regency of Maros amounted to 11,790 households and the villages of Pangkep 5 to 4,089 households¹³. These communities make their living as farmers and are classified as poor families.

The main livelihoods of the people of the Karst Maros-Pangkep region are farmers. The area of agricultural land in the Regency of Maros is 26,071 ha and the area of Pangkep District is 6,870 ha, with a total area of 43,433.85 ha.

The impact of climate change has consequences for reducing the income of people who use the land to live their lives. The average total income of inhabitants of the karst **region of Maros-Pangkep is Rp. 3,836,367 / year and up to 65% of the population lives below the poverty line. The community's average level of dependency on the region is 37.97%. The income obtained is classified as low, which is lower than the regional minimum wage (UMR) of the province of South Sulawesi**¹⁴.

In the regency of Maros, there is local wisdom that influences the socio-economic context, especially when entering the season of sowing and harvesting. Some traditional rituals practiced by the community through the adat leader are called "Pinatia". For the community, Pinatia is known to have more knowledge to predict the weather. Thus, when the initial planting of "Apalili" rice is done by "Pinatia" (customary president) in the customary paddy fields, all farmers will plant in each of their fields simultaneously. **This is in fact done to reduce the impact on pest attacks, besides the fact that the community also keeps the rice planted together because it is also planted at the same time. However, because of**

climate change and the speed with which we adapt pests, community rice paddies also continue to be affected by pests, floods and droughts that lead to lower productivity in the food sector.

Climate change has a significant impact on the availability of water used for domestic and productive tasks. **The increase in the frequency of floods and droughts has had additional consequences, especially for vulnerable groups, especially women responsible for water management at the household level. In addition, it is the responsibility of women to provide adequate nutrition to the family. Therefore, the participation of women is indispensable in the project, as a form of empowerment of women.**

3. Project Context

The effectiveness of the fight against climate change also depends heavily on policies and measures at all levels (international, regional, national and subnational). **The Indonesian Change Management Program is included in the 2014 National Action Plan for Adaptation to Climate Change (RAN - API).** The implementation of the policy is serious enough to address the vulnerability to climate change that has a significant and lasting impact. **Vulnerability to high climate change makes the inhabitants of the Karst region vulnerable to impacts. Vulnerability to high climate change makes people in the Karst region vulnerable. Climate change in the Karst region is causing drought and flooding community farms.**

¹² Bantimurung Bulusaraung National Park

¹³ Badan Pusat Statistik (2018)

¹⁴ TLKM Survey Results (2017)

Most of the inhabitants of the Karst region of Maros-Pangkep earn their living mainly as farmers whose economic conditions are unfavorable and who suffer heavy losses as a result of climate change. The conversion of forest areas in the Karst region is also one of the impacts of increasing disaster potential. In addition, the regional government will find it increasingly difficult to address these issues if human resource capacity is not yet qualified. The effects on natural resource damage will be even more severe and will lead to a slowdown in the economy and regional development.

Program “Sustainable Livelihood and Ecoenterprise in Karst Ecosystem for Adapting to Climate Change” is an effort that will encourage community adaptation actions in the Karst Region and can be easily replicated. If this adaptation program is not implemented, the community in the area as a vulnerable community with economic conditions in the pre-prosperous category will have a greater impact than the current impact.

PROJECT / PROGRAMME OBJECTIVES

The entire of project intervention is intended to reduce the potential impact of disasters and decrease the environmental carrying capacity of the karst ecosystem in the National Park due to climate change will described through productive activity interventions, such as: integrated land management in relation to food security, establishing product differentiation so that it is expected to boost community income. In addition, interventions on human resource development in local community are also very important points to accelerate climate change adaptation. Depretiation reates of productivity caused by land degradation and the potential for recurring disasters makes the livelihoods of local communities more very difficult. Through the project's main objective, the Adaptation Fund will help accelerate economic growth to support other sources of community income as part of the adaptation of local communities to support their families. **This local adaptation we call "from subsistence to sustenance".**

In addition to strengthening at the grassroots level, project interventions also focus on strengthening regulations to binding the government's role in the accelerating agenda: adaptation climate change. Besides to encouraging sustainable management, the intervention also intended as a trigger for **competitive regional development** that is implemented through facilitating partnership with the private sector, research institutions (universities), and other stakeholders through agendas that strengthen each other (mutualism) between the government and the local community. Then, all learning from the results of the project intervention will be recorded and documented through knowledge management agendas. In our commitment it's very important to distribute knowledge so that the same adaptation actions can be reflected in different locations.

Based on consideration of the intervention, 3 main objectives of the project are outlined. The main objective of this program is to increase the adaptation efforts of people living in the world's largest karst ecosystem, which are part of climate change adaptation efforts focused on:

1. Enhance the accessibility of food security by **subsistence to sustenance adapting** for the impact of climate change on the karst ecosystem.
2. Strengthen regional planning and policy for climate change adaptation actions in the karst ecosystem;

3. Knowledge management and dissemination of climate change adaptation actions in the karst ecosystem.

PROJECT / PROGRAMME COMPONENTS AND FINANCING

Project/Programme Components	Expected Concrete Outputs		Expected Outcomes	Amount (US\$)
1. Increased accessible food security in the sustenance adaptation of the impact of climate change in the karst ecosystem	1.1.1.	Greater capacity of the parties to overcome climate change and low sustainable development.	1.1 Increased capacity and partisanship of the parties to overcome climate change and sustainable development with low carbon in the Karst ecosystem	\$ 687,607
	1.1.2.	The growing partisanship of the parties in overcoming climate change and low carbon sustainable development.		
	1.2.1.	The existence of a Social Forestry scheme that embodies forest food security around the Karst Ecosystem.	1.2. Accessed several schemes/ programs that could develop environmentally friendly and low-carbon food products by the community around the karst ecosystem.	
	1.2.2.	Higher quality, quantity, added value and certainty of agricultural products.		
	1.2.3.	Strengthening market systems for food products that are environmentally friendly		
2. Strengthening of regional planning and policy towards adaptation measures to climate change in the karstic ecosystem	2.1.1.	The internalization of climate change adaptation actions towards regional policies	2.1. The internalization of climate change adaptation actions through planning documents and policies to adapt to climate	\$ 110,621
	2.1.2.	The existence of the RAD API and Roadmap of adaptation to		

	climate change in the karst ecosystem		
3. Strengthening information systems from the knowledge management and learning of climate change adaptation programs by the parties	3.1.1. The Climate Change Adaptation Program in the Karst Ecosystem was concluded	3.2. Knowledge management and learning about climate change adaptation programs by the parties	\$ 66,441
4. Coordination with national implementing entity	4.1.1.	4.2.	\$ 10,000
4. Project/Programme Execution cost			\$ 91,816
5. Total Project/Programme Cost			\$ 874,669
6. Project/Programme Cycle Management Fee charged by the Implementing Entity (if applicable)			\$ 82,151
Amount of Financing Requested			\$ 1,048,636

PROJECTED CALENDAR

Milestones	Expected Dates
Start of Project/Programme Implementation	June 2019
Mid-term Review (if planned)	January 2020
Project/Programme Closing	December 2021
Terminal Evaluation	March 2022

PART II: PROJECT / PROGRAMME JUSTIFICATION

A. PROJECT COMPONENT

Component 1: Increased accessible food security in the sustenance adaptation of the impact of climate change in the karst ecosystem

Increasing the accessibility of food security to climate change adaptation through Social Forestry has a direct impact on the improvement of ± 1000 ha forest governance system in National Park Area. Strengthening Policies indirectly has an impact on improving forest management area 43,750 ha in Bantimurung Bulusaraung National Park.

Increasing the capacity of the parties to adapt to climate change through several training and workshops based on low carbon development. As Indonesia's commitment to the initiative that the Indonesian Low

Carbon Development Plan (PPRK) outlined in the National Medium-Term Development Plan (RPJMN) 2020-2024. This also encouraged the project to develop a policy brief that adapts to climate change within the framework of the SDGs through this program which will be strengthened through capacity building. Some programs that will be carried out such as training on food security training for gender-specific disasters, as a step to strengthen the forestry sector are alternatives to supporting forest food security. The disaster simulation program, early warning / emergency response management is also an effort of adaptation to climate change.

Development of 15 schemes / programs for the development of environmentally friendly and low-carbon food products. Then to encourage sustainable social movements, this component will also implement **a program of adopting 100 trees in five climate villages that will be formed in the affected intervention villages. As the participation of the parties, it becomes a concrete action to protect the forest and biodiversity.** Another effort during the project is that the community can provide **information / reports** on the phenomenon of climate change that occurs in the village through the **citizen journalism**. In this program, anyone can get involved in the treatment of news both in video and orally and secondly, the content broadcast contains elements of attractiveness for the public. The program is expected so that the community is sensitive to the facts or events that occur and can see all the possibilities for an event to become news.

The establishment of 5 Social Forestry schemes, namely the Conservation Partnership as a pattern of climate change adaptation in the Karst Ecosystem based on food security. Social forestry scheme will be implemented in 7 villages located in Maros Regency and Pangkep in the Ecosystem. This is in line with the Ministry of Environment and Forestry's target of granting access to manage forest areas through Social Forestry which is targeted to be realized until 2021, which is 12.7 million ha. To get legal access, the people in the affected villages will be facilitated to form a Forest Farmer Group (KTH) based on P.83 of 2016 concerning Social Forestry. This Social Forestry Scheme will provide legal access to people who have traditionally managed the Forest Zone wisely and provide space to empower participatory sustainable forest management.

Efforts to realize food security through the intensification **system program or known as the System of Rice intensification (SRI)** in the context of increasing the quality, quantity, added value and certainty of agricultural products will be made **10 demonstration plots and agricultural insurance.** This program is a fundamental promising alternative in rice farming in Indonesia. Through this method, farmers are invited to have the view that with a simple innovation and economic costs that are not too expensive, rice farming is able to provide optimal results even far better than the old way of farming. **Minapadi program is one of the SDGs programs** that has been agreed by the world and its main objectives are poverty alleviation and meeting global food needs. Indonesia has now become a pilot in the world for the minapadi system, and has become the FAO's reference for the Asia Pacific.

Food products from SRI will then be managed into a product and will be packaged so that it will become one of the additional income for community in KARST ecosystem. **Strengthening the market system for environmentally friendly food products is also a strategic program in producing products made from environmentally friendly materials.** The Ministry of Environment and Forestry at the 14th Conference Asia Pacific Roundtable for Sustainable Consumption and Production dan Indonesia Resource Efficiency Forum Expo 2018, **issued a scheme system for certification of environmentally friendly goods and services and became Indonesia's national standard.** In addition, the efforts of community agricultural units will use agricultural insurance services as part of protecting community income sources that are often interrupted in the event of a flood and ultimately crop failure.

Component 2: Strengthening of regional planning and policy towards adaptation measures to climate change in the karstic ecosystem

Strengthening regional and cross-sectoral planning and policies and providing legal certainty for adaptation actions in the Karst Ecosystem. This project will encourage the formation of **working groups for adaptation to change (Pokja API) at the regional level.** The API Working Group will internalize regional planning and policy documents in the climate change adaptation framework from the

village to the district level. **Internalization of adaptation plans to regional plans and policies will encourage adaptation plans to be made in the Regional Regulation through the Regional Action Plan (RAD API) an effort to ensure the sustainability of the adaptation program.**

At the district level, every local government apparatus related to the environment, agriculture and climate change, local NGOs, and experts from the university will be involved in every process of the **Regional Action Plan (RAD API) and preparation of a climate change adaptation Road Map (API)**. At this stage the formulation of risks, dynamics and obstacles to climate change will occur in the Karst Ecosystem. The grouping of issues will then become the main foundation for the RAD API LWG team in compiling an adaptation plan which is then integrated into the RPJMD. The strategic plan (RENSTRA) in each regional apparatus will also be a benchmark for integrating the strategies and action plans that will be formulated. For the short term it can be monitored in the local government work plan (RKPD) which is revised once a year.

Component 3: Strengthening information systems from the knowledge management and learning of climate change adaptation programs by the parties.

All knowledge management and learning activities of the components of this project are carried out in order to ensure the sustainability of the climate change adaptation objectives in the karst ecosystem and to ensure that each element of learning this project can be replicated in the future. Dissemination and knowledge management is **technology-based**, so the project coverage will be wider in the future, not only in the karst ecosystem of Maros-Pangkep, but also in some areas with karstic ecosystems and similar problems all over Indonesia. This is also done so that it can lead to efforts to increase in the same cases in Indonesia.

The main dissemination activities of this knowledge management component are the publication by **writing a policy brief** to serve as advocacy material to encourage parties to implement climate change adaptation strategies. Successfully completing a **lesson learning textbook of Adaptation to climate change** was conducted to document climate change adaptation measures and increase public awareness of climate change. In addition, other **publishing materials** such as digital infographics, video graphics, billboard, and another digital publishing materials are designed to accelerated learning dissemination and to ensure that all parties get lesson learned. **The launch of short films and documentaries** was conducted to document all components of the project and to capture stories of experience and learning in each of the completed project activities, which are the achievements of the adaptation fund program.

Dissemination activities also include conducting a **study of the impact of the program on the state of the landscape and the lifescape at the project intervention site**. This activity will produce a **climate change risk assessment document** in the karst ecosystem landscape as a material to anticipate the threat of climate change in the future. **Technology platform** for the dissemination of all activities on project components, **web-based or mobile applications operationalized by project management**, to facilitate access to information for parties.

B. ECONOMIC, SOCIAL, AND ENVIRONMENTAL BENEFITS

The project "Sustainable Livelihood and Ecoenterprise in Karst Ecosystem for Adapting to Climate Change" has various positive economic, social and environmental impacts on direct and indirect beneficiaries. The direct beneficiaries in question are farmers and vulnerable groups who have a direct impact on climate change. The total beneficiaries of this project were 728,799 people in two regiments of maros and pangkep. While the total number of direct local beneficiaries of 1,400 people representing 30% of the total population reaches 420 people in 8 sub-districts, with 15 selected villages included in the karst ecosystem area.

In the Karst Ecosystem Adaptation Consortium (KARST) project planning, three (3) components of the work will be implemented, including increasing the availability of food security for adaptation of the impact of the KARST. climate change on the karst ecosystem. and value-added

of agricultural products. This will be done through social forestry and institutional strengthening programs, to indicate that the project is able to generate economic benefits in all areas of project intervention and financial and knowledge benefits for the project. the community in the project intervention area. Project activities will have a direct impact on the quality of natural resources and the environmental carrying capacity. Management in the karst ecosystem area will support increased forest cover in the project area. Indeed, project interventions will contribute to low carbon development.

The project also pays particular attention to vulnerable groups, dominated by women in the project area, through the participation of management activities in the food market system that is environmentally friendly. The involvement of women in each "project goal" becomes a priority in order to minimize the gender gap. The project will directly local benefit an estimated **105 families** who are especially vulnerable to the impacts of climate change, through the design and implementation of concrete adaptation measures for more ecoenterprise and livelihood in Karst Ecosystem.

Gender analysis has been carried out to assess the division of labor and roles of women and access to resources and to develop recommendations on how the project will promote women's equality and empowerment, including participation in project decision making. Actions will ensure that women receive fair benefit sharing and that their status and interests are not marginalized. Gender mainstreaming in climate change adaptation efforts is part of the project intervention. 30% participation of women in various activities to support the achievement of project objectives. The value of 30% is the representation value of women as stipulated in the South Sulawesi Province Regional Regulation Number 1 of 2019 concerning the South Sulawesi Province Medium Term Regional Development Plan 2018-2023 (RPJMD), and the efforts of the Consortium to encourage gender mainstreaming in each line of project activities. The interventions planned would have positive impact on women empowerment and would ensure gender equity due to certain livelihoods. Local gender training on disasters and food security contributes to increasing women's capacities. This is a real effort to address the problem of gender inequality. Where women are the most vulnerable parties because of gender injustice.

C. COST-EFFECTIVENESS

The project analyse cost effectiveness within two scenarios. First, project will analyse short term cost effectiveness, in this term during the project process (2 years). Second, project will analyse long term cost effectiveness, in this term it will take 10 years.

Table 3. Cost Effectiveness Analysis with 10-Year Operational Cost Approach

Alternative Intervention	Cost Effectiveness Ratio for 10 Year Projection (\$)	Cost Effectiveness Ratio during Project Period (\$)	Cost Effectiveness Incremental Ratio for 10 Year Projection (\$)	Cost Effectiveness Incremental Ratio during Project Period (\$)
Without Project	1,477,831	1,477,831	697,757	3,488,787
With Project AF	1,243,809	2,081,118		

During the project period (the first two years), the value of cost effectiveness provides the “without project” is more effective than the “with project AF”. It is because the AF project more costly than regular funding by government. It is happened because there are additional activities with AF Fund, who intervene prevention sector such as internalization pro-climate change policies, strengthened institution, improving knowledge and practicing sustainable land activity. It is very active compared by government regular program who focus on repairing damage caused by the climate change impacts such as floods, avalanche, and unstable rainy season.

The “without project” data was provided from the governmental activity (Maros District and Pangkep District) each year. The data was accumulated from 2015 to 2017 by TLKM and it was analyzed to conduct the average cost. Meanwhile, the “with project AF” data is provided from the amount of financing requested from the Consortium (KARST) to Adaptation Fund. All data analyzed by Cost Effectiveness Analysis that similar to Siegel, Et.al. (1996) guidelines¹⁵.

Without project AF, government will pay more than the condition with project AF intervention. With the project AF, government can save average \$234.022 within 10 years plus improving of environmental conditions, improving local knowledge, and enabling local system that protects food security.

From the result above, we can conclude this project has a better cost-effectiveness compared to the current process. The project will provide change in many sectors than the previous and make more effective impacts in the future.

D. ALIGNMENT WITH NATIONAL AND SUB-NATIONAL SUSTAINABLE DEVELOPMENT STRATEGIES

1. National Development Strategy

The project " Sustainable Livelihood and Ecoenterprise in Karst Ecosystem for Adapting to Climate Change" is based on (1) the 2015-2019 Medium-Term National Development Plan (RPJMN) in point 1 on food security and sustainable development. point 2 on greenhouse gas emissions and the quality of the environment Life as the main objective of the national program, (2) The priority agenda of the president (9 nawacita) is in point 3 Building Indonesia from the periphery and in the 7th point Achieving economic independence by moving strategic sectors of the national economy, (3) Law No.6 of 2016 concerning Ratification of the Paris Agreement to the United Nations Framework Convention on Climate Change Article 2 point (b) Increasing the ability of adaptation to

¹⁵ Siegel, J. E., Weinstein, M. C., Russell, L. B., & Gold, M. R. (1996). Recommendations for reporting cost-effectiveness analyses. *Jama*, 276(16), 1339-1341

the impacts of climate change and promoting climate resilience and carrying out development that is low in greenhouse gas emissions, without threatening food production, (4) Law 32 of 2009 concerning Environmental Protection and Management article 57 paragraph 4 climate change mitigation and adaptation efforts to preserve the function of the atmosphere, (5) Law No. 18 of 2012 on food, Article 3 states that the implementation of food is based on food sovereignty, food independence and food security that provide equitable, sustainable and sustainable benefits, (6) Law No. 32 of 2009 concerning the protection and management of the environment, Article 3 aims to protect and manage the environment to achieve sustainable development and anticipate global environmental problems, (7) Law No. 5 of 1990 Article 3 Achieving the preservation of living natural resources and the balance of its ecosystem can support efforts to improve the well-being of the community and the quality of human life, and (8) Law No. 14 of 2008 concerning the opening to public information.

In this project, the form of intervention is the realization of the sovereignty, independence and sustainability of food. This is in line with the objectives of the Food Resilience Agency's 2015-2019 Strategic Plan and the objectives of the Ministry of Environment and Forests 2015-2019 Strategic Plan for the Food Security Sub-Program to Enhance the Diversity of Food Security. food supply based on local resources and to reduce the food insecure population **and Nationally Determined Contribution (NDC) of the Republic of Indonesia on point 4 of the Strategic Approach and point 9 of the low-carbon and climate-resistant strategies** The Indonesian government considers climate change mitigation and adaptation as an integrated concept that is important for building resilience in maintaining food, water and energy resources. This is also supported by Government Regulation No. Article 25 of Article 17 of 2015 states that dietary diversification aims to increase the availability of diversified foods and relies on the potential of local resources. In addition, the form of intervention in this project will also support the National Action Plan for Adaptation to Climate Change (RAN-IPA) in the 2015-2019 Action Plan for Food Security, namely a development cluster. accelerated food diversification and a pole for the development of innovative and adaptive technologies. This form of intervention will also support the Action Plan for Achieving the Sustainable Development Goals of the 13th Ministry of Development Planning (BAPPENAS), which aims to strengthen regional policy planning for adaptation to change. climate change and to enhance the capacity and partiality of stakeholders to overcome. climate change and sustainable development with low carbon.

This project also supports the objectives of the Ministry of Environment and Forests in the 2015-2019 Strategic Plan of the Ministry of Environment and Forests, namely the allocation of 12.7 million hectares to the Social Forestry Program (PS) as Community Economic Equalization, while the POKJA Workshop on South Sulawesi Social Forests, the goal of accelerating social forestry is 200.95 thousand hectares in 2019. The Intervention is achieved by providing access to the use of state forests to the community through the Forest Partnership Program. In addition, the existence of an intervention by a city journalist as a facilitator of pihar alignments will support the government's disclosure action plan, mainly in the sense of point 1, namely to increase public participation, and strengthen it with Law No. 1. 14 of 2008 on transparency of information Chapter 2 Principles and objectives.

2. Sub-National and Regional Development Strategies

This project is based on (1) the South-South Sulawesi Province Long-Term Development Plan (RPJPD) for the period 2008-2028 (Article 4 (2) (d)), maximizing community participation and (e) ensuring the efficient, effective, equitable and sustainable use of resources. (2) South Sulawesi Province Land Use Plan for 2009-2029, Article 3, which defines South Sulawesi's role as a land of sustainable food production by guiding the development of agribusiness and agribusiness industries, especially the highquality products of South Sulawesi, which are also a driving force of the popular economy and the development of Article 9 aquaculture activities with a power of anticipation and adaptation to disasters in exposed areas to disasters. (3) Objectives of the South-South Sulawesi Regional Environmental Agency Strategic Plan 2013-2018, namely increase in environmental carrying capacity and adaptation to and mitigation of climate change. (4) Purpose of the Strategic Environmental Assessment Report for the South Sulawesi Province PJMD Project, Year 2018-2023, Item 5 regarding the search for the most strategic sustainable development issues in South Sulawesi Province, as well as that the efforts made to solve them. (5) Regional Regulation of South Sulawesi Province No. 3 of 2014 concerning the protection and management of the seventh part of the Karst ecosystem maintenance article 108, namely the preservation of the function of the karst ecosystem carried out through adaptation to climate change.

At the regional level, the project interventions are part of the priorities of the Medium-Term Regional Development Plan (MMPR) for 2016-2021, such as increasing the productivity of food crops and forest products, the preservation of areas improve the quality of information on natural disasters, adaptation and mitigation of climate change. Intervincial also conforms to the spatial plan of the regency of Maros for the period 2012-2032, particularly with regard to the ecological preservation of the region, especially in protected forest areas, by preventing actions that could modify directly or indirectly the physical nature of the environment to support sustainable development. forests as buffer zones, forest rehabilitation and development of industrial areas, particularly on the basis of commodity yields in the forest sector.

In addition, at the regional level, in the Pangkajene district and islands, the interventions carried out are also in line with the 2016-2023 Regional Development Plan (PJMD) for the 3rd mission, namely to improve the integrated management of natural resources by giving prioritizing spatial and environmental developments with the management of pollution control and environmental damage areas. At the same time, the 2012 regional spatial plan is also part of the project interventions, such as the development of agroforestry as a buffer zone around the forest, the encouragement of planting / rehabilitation activities of the forest. forest, skills and capacity building through formal and non-formal education for forestry workers, restitution of the hydrological function of forest areas damaged by reforestation, protected forest development plans located in the district of Minasa Te'ne, Balocci, Tondong Tallasa, Bungoro, Segeri and Mandalle with a total area of 7,701.71 ha, and developing The industrial areas of Pangkajene and Kepulauan district are mainly results of the forest sector based on basic products.

E. COMPLIANCE WITH NATIONAL TECHNICAL STANDARDS

In the project Sustainable Livelihood and Ecoenterprise in Karst Ecosystem for Adapting to Climate Change interventions - interventions that do will be relevant to the regulatory guidance of technical nationwide are:

1. The existence of a Social Forestry scheme around the Karst Ecosystem

This intervention is based on **Permen No. P.83/MENLHK/SETJEN/KUM.1/10/2016** concerning Social Forestry. The form of social forestry that is proposed is a scheme of conservation partnerships that is detailed in the discussion of the **Perdirjen No.**

P.6/KSDAE/SET/Kum.1/6/2018 on technical indicators of conservation partnerships on the nature reserve and nature conservation areas in Article 3 The scope of conservation partnerships in the framework of community empowerment and ecosystem recovery, in article 4 granting of access to conservation partnerships in the form of a forest-non-timber poll and traditional cultivation, article 21 Facilitation of strengthening Community institutional, article 26 conservation Partnerships in the framework of the restoration of ecosystems carried out on the damaged ecosystem, article 37 facilitation of increasing the capacity of the community in the utilization of zones. Facilitating the formation of forest farmer groups refers to **Permenlhk No.P.89/Menlhk /SETJEN/Kum.1/ 8/2018** about guidelines for groups of farmers woods chapter II formation of groups of farmers woods chapter 4 the formation of groups of farmer forests perform activities in the field of forestry in the form of nursery plants forestry, harvesting the results of forest is not timber, rehabilitation forests, protection and nature conservation. Facilitation for the procurement and planting of seeds for ecosystem recovery refers to **Perdirjen No. P.12/KSDAE-Set/2015** on guidelines governance the way of planting and enrichment types in order to restore the ecosystem land in the area of asylum nature and Regions preservation of nature which stages the implementation of the guidelines governance the way of planting and enrichment kind in the area of asylum nature and asylum preservation of nature , covering aspects of the provision of seedlings , planting and enrichment , coaching and population , as well as protection and security , while the types of plants that have the type of original that is found in the ecosystem and have properties that correspond to the footprint that will be restored

2. Increased results produksi Agriculture -based organic in ecosystems of karst

This intervention is based on the **Permentan No. 64 / Permentan / OT.140 / 5/2013** concerning organic farming systems with the aim of maintaining ecosystems so that agricultural production plays a role in preservation and the environment and increases the added value and competitiveness of agricultural products. The detailed organic farming system is discussed in the Technical Guidelines for the **Development of the System of Rice Intensification (SRI) directorate of land expansion and management and the directorate general of agriculture and agriculture facilities ministry of agriculture 2015**, the stages of implementing SRI development are carried out by 1) providing production facilities and 2) land management, planting and maintenance based on organics. Agricultural insurance facilitation to protect farmers from losses from crop failure with an agreement between farmers and insurance companies, this intervention refers to **Permentan No. 40 / Permentan / SR.230 / 7/2015** concerning Agricultural insurance, article 5 of farmers' crop failure losses caused by natural disasters, pest attacks, and the impact of climate change.

3. The existence of climate change adaptation actions in the karst ecosystem

This intervention is based on the **Permenlhk No. P.33 / Menlhk / Setjen /Kum.1/3/2016** concerning Guidelines for the preparation of climate change adaptation actions in chapter II procedures for preparing climate change adaptation action plans, while the methodology for preparing climate change adaptation action plans refers to **Permenlhk No. P.7 / MENLHK /**

SETJEN / KUM.1 / 2/2018 concerning Guidelines for assessing vulnerability, risks and impacts of climate change. The preparation of a road map of action adaptation to changes in climate in the ecosystem Karst is participatory refers to the **Perdirjen No. P.2 / PPI / SET / KUM.1 / 1/2018** concerning guidelines for facilitating the preparation of climate change adaptation plans in the regions , in article 5 Types of facilitation in preparing climate change adaptation plans in the regions in the form of carrying out coordination forums , carrying out socialization , implementing Focus group discussion (FGD). The formation of the group work Adaptation changes in climate as accelerating action Adaptation refers to the Decree of the Minister of state planning of the **construction of the National No. KEP.38 / M.PPN / HK / 03/2012** concerning the formation of a coordination team handling climate change point B no. 6 group work areas of adaptation to changes in climate. Facilitation of strengthening local action through the Establishment of Climate Village refers to **Perdirjen No. P.1 / PPI / SET / KUM.1 / 2/2017** on Guidelines for the implementation of the program hometown climate in Article 5 the formation and development of programs hometown climatic done through the stages of preparation , planning , implementation , and development of action adaptation and mitigation change climate which aims Encouraging group of people doing activities of adaptation and mitigation change climate at the level of local , Giving recognition to the actions of adaptation and mitigation change climate at the level of local who has made the group of society , and Encouraging the dissemination activities of adaptation and mitigation changes in climate that have been successfully implemented at the location specified to be applied in other areas according to regional conditions and the needs of the local community.

F. DUPLICATION OF PROJECT

Some of our consortium members, are long-time and widely implemented NGOs The National Park area in the districts of Maros and Pangkep. From the year 2010 NGO TLKM has been running a lot of programs related to participatory Action Research, conflict resolution, partisipatory Rular Aprasial (PRA), up to now cooperate with National Park Hall Bantimurung Bulusaraung on forestry partnership programs with community groups and Development of non-timber forest outcomes: honey, palm and mushrooms. NGO Payao-Payao also today still continue to develop biogas renewable energy in several areas of National Park area, and SRI (System Of Rice Intensification) and in the year [2017-2019](#) through the funding of Indonesian birds (Bird Live) Implementing a management program around Karst: Palm planting. NGO Journal Celebes on the same time [2017-2018](#) also has a program related to region protection.

One of the activities that was encouraged through the concept of this Note was "Tree Adaptation" before NGOs TLKM designed the concept for this draft in 2014, but due to funding factors for this concept cannot be matured, implemented and promoted. Whereas the activity in encouraging SRI (System Of Rice Intensification) through the concept of this note, has been done partially in form demonstration plot by NGO Payao Payao and was successful. Through this concept note, SRI activities can be expected especially if there are areas that are directly affected by floods and drought the impact of climate change.

Project Sustainable Livelihood and Ecoenterprise in Karst Ecosystem for Adapting to Climate Change is a new visible program that will be duplicated in the future with the same background is a program Elaborated through previous learning, and was developed into a series of project Sustainable Livelihood and Ecoenterprise in Karst Ecosystem units are also strengthened Through technological inputs, and policy inputs to maintain their particular sustainability in areas affected by climate change.

At the end of the project through product the knowledge product is expected to be duplicated by other regions with the same dynamics and conditions.

G. KNOWLEDGE MANAGEMENT

This project is very focused on important knowledge and learning issues that are being implemented in the project activities. This knowledge management is further divided into four categories, namely: (1) factual knowledge of measured, observable and verifiable data; (2) conceptual knowledge related to perspective and system; (3) expectations of knowledge that are captured based on expectations, assumptions, or judgments made when learning the behavioral goals of the project; (4) methodological knowledge related to decision making and problem solving. The four important elements of each activity will be recorded in the program section, including:

1. **Strengthen the capacity of field facilitators and other management units** that play a strategic role in disseminating information and valuing project achievements and impacts. This function is also a communication tool for actors considered to have a major influence on the program's achievements. All communication activities that have been successfully recorded will be documented as learning that can be adopted with other regions.
2. **Strengthening the system of monitoring, evaluation and management of program reports** to photograph the implementation of the results of the study carried out by the program by applying it at the level of the beneficiaries.
3. **Presentation of project achievements in the form of books, digital and non-digital** content as part of a campaign to invite more stakeholders to participate in supporting climate change adaptation programs that help accelerate achievements and the objectives of the project.
4. **Mediation of project activities in digital** and conventional media related to climate change adaptation. This is also supported by strengthening target capacity through the training of Internet journalists to reach a wider audience.
5. **Accelerate the POKJA API** as a representative of the regional government to upgrade the information and problems that develop at the site level and encourage it to become a joint effort to link the issue of adaptation to change climate change to the district work program and the provincial work program. This mechanism will also encourage stakeholders to simultaneously monitor and attract affiliates with support systems to ensure the success of the program.
6. **Involvement of universities and research institutes** among the main actors in the implementation of the project and reinforcement of the learning arguments acquired in the field. And to enrich the repertoire of knowledge and dissemination of these issues in the context of universities and research institutes. Thus, this effort should be able to disseminate information about the project's achievements, which will then serve as references and knowledge products for the wider community.

H. CONSULTATIVE PROCESS

In the early stages of the project, through the analysis of a team of experts or specialists who will focus on identifying direct beneficiaries, in this case, farmers and vulnerable groups who will directly receive the impact of the project. **“Sustainable Livelihood and Ecoenterprise in Karst Ecosystem for Adapting to Climate Change”**.



Figure 5. Identification of women's groups



Figure 6. FGD with farmer groups

Table 4. Multi-stakeholder consultation results

No	Stakeholder	Consultation Results
1	Bantimurung National Park	The Karst Ecosystem Adaptation Consortium (KARST) be expected to assist Bantimurung Bulusaraung National Park in realizing community empowerment programs through the Conservation Partnership program. The community empowerment program through conservation partnerships output of the Sustainable Livelihood and Ecoenterprise in Karst Ecosystem for Adapting to Climate Change program, that the realization of the KARST program indirectly supports the Bantimurung Bulusaraung National Park Office program.
2	Development Planning Agency at Sub-National Level / BAPPEDA	BAPPEDA Province has a program that is concerned with issues of climate change. Climate change adaptation is one of the important issues in Sulawesi, through the program Sustainable Livelihood and Ecoenterprise in Karst Ecosystems for Adapting to Climate Change which will be initiated by KARST be expected to collaborate in developing future Sul Cell planning in responding to climate change adaptation issues, main at the project site.
3	Community Farmer Groups	In FGD, proposal drafting team developed initial communication to several forest farmer groups who are direct beneficiaries of the Sustainable Livelihood and Ecoenterprise in Karst Ecosystem for Adapting to Climate Change project. Increasing income and increasing the capacity of forest farmer groups be expected to KARST. Forest farmer group expectations have been facilitated by several outputs in component 1 of the project.

The consultation process will directly involve the Bantimurung Bulusaraung National Park Office, BAPPEDA, BPS, BPBD, social services and unions, village governments and local groups or community leaders. The personalities that will be chosen have a strong influence at the community level as working partners in the implementation of the program, such as adat leaders, regional sons, leaders of women's groups and other community leaders. The consultation process involves all key figures, both in the form of group discussions and multi-stakeholder meetings, to determine the interests of each beneficiary so that they can be taken into account in a meaningful way. optimal in the implementation of the project. The stakeholder consultation process in the early stages of writing the note:

No	Stakeholder	Issue
1	Bantimurung Bulusaraung National Park	Data baseline, Beneficiaries & Intervention Site Project Conservation Partnership
2	BAPPEDA	Planning Maros & Field Site Project interventions
3	BPS	Planning Maros & Field Site Project interventions
4	BPBD	Disaster vulnerability Disaster Baseline
5	Office of Social & Labor	Poverty Beneficiaries Intervention Site Project
6	Village government	Status of Forest Farmers, Women and Vulnerable Groups Community Dynamics Community income Project Component
7	Public	Identification of farmer groups Identification of vulnerable groups

I. JUSTIFICATION FOR FUNDING REQUESTED

This project will intervene policies, institution, knowledge and tenurial activity. It is conduct to increase climate change adaptation in Karst Ecosystem at Maros-Pangkep. All of the intervenes based on problem analysis conducted by this consortium. The funds will be very helpful to realize climate change adaptation actions in the Karst Ecosystem.

No.	Program Component	Baseline	Additionally (with AF)
1	Increased food security for adaptation to climate change in the Karst Ecosystem	1. Climate change threat to food security in Karst Ecosystem is high 2. Forest encroachment for the agriculture because of shifting cultivation that driven by lack of water supply	1. Increased capacity and partisanship to overcome climate change and sustainable development with low carbon emmissions in Karst Ecosystem 2. Accessed several schemes or programs that could develop food products that are environmentally friendly and low carbon by the community around the Karst Ecosystem
2	Strengthening Regional Planning and Adaptation Policy climate change in the karst ecosystem	Climate change issue in Maros and Pangkep (Karst Ecosystem Area) has lack of interest from the government. Paradox with the reality above that climate change already give impact to community around the Karst Ecosystem. The underdeveloped Karst Ecosystem Management will lead to an increase number of poor people around the Karst Ecosystem	The internalization of climate change adaptation actions through planning documents and policies to climate change adaptation
3	Knowledge management and dissemination of climate change adaptation actions in Karst ecosystem	Public awareness of climate change threats is very low, in the absence of publications	Publishing and promote products of knowledge management.

Component 1 want to conduct climate change adaptation by increased food security in Karst Ecosystem. Based on our research there are two major threats in climate change issues at Karst Ecosystem. First, an inconsistent rainy season leading to productivity decline of community agriculture. Second, reduced water in dry season encourages farmers practice shifting cultivation and it is increase encroachment of forest for the agricultural uses. All of these threats without support from AF will trigger forest degradation in Karst Ecosystem. With the AF support, we will give knowledge and promote action to overcome climate

change. To complete the action, the funds will provide legal access to community to manage forest that environmentally friendly. All these actions will ensure food security by climate change adaptation.

Componen 2 want to strengthened regional planning and policy to adapt from the climate change in the Karst Ecosystem. Based on our research, the interest of local government (Maros and Pangkep) still focus on fix the impact of climate change than to prevent the impact. Without AF fund, climate change will cause costly in the long term for the government and increase number of poor people for the farmers around the Karst Ecosystem. With AF Funds, we will bring prevention actions through policies and planning documents.

Componen 3 want to manage climate change adaptation actions knowledge and disseminate it to public. Based on our research there are lack of of public awareness of climate change threats especially publications. Without AF Funds, the process of dissemination and knowledge management in support of previous activity will not work optimally. The level of public awareness of climate change threats will remain at a low level, with no publication of this project. AF support is a dissemination effort to ensure program alignment and expand the scope of benefits from the adaptation program.

J. SUSTAINABILITY

The project interventions will bring improvements and improvements in the areas of ecology (environment), finance (financial) and well-being and social (society) that will ultimately strengthen the community in the landscape of project interventions aimed at to adapt to climate change and to be more attentive to future disasters, the risk of impact will be reduced.

In the context of the sustainable project, the unit cost of all components that support the project objectives is considered a sustainable investment. It should also be a system that can have a broader and adoptable impact on other vulnerable areas. The following is a description of the sustainability aspects of the project to be achieved:

1. Ecological sustainability

Activities related to ecological improvements implemented in projects such as tree planting, community building and climate change enhancement Adaptation policies are long-term achievements that contribute to the functioning of sustainable development. the karst ecosystem as part of the process of adapting communities around the ecosystem to climate change. Ecological sustainability is seen as an integral part of fundamental changes in policies related to economic growth and lifestyles of people in the karst ecosystem. Through this project, the protection of the ecology of the community's economic growth (livelihoods) model and consumption-based lifestyles will be addressed through the implementation of ecological approaches to livelihoods. communities and a way of life that is more respectful of the environment. Thus, with the intervention of the project, it does not eliminate the existing livelihoods of communities but transforms these patterns into an effort able to adapt to climate

change and be environmentally sustainable. Thus, the goal of success will be measured economically rather than ecologically, that natural resources are well managed and equitable.

2. Individual sustainability of finances and well-being

Financial viability is also an important element of production at the end of the project. This project will ensure the sustainability of climate change adaptation program funding through delegation of roles to local governments (districts / provinces) and other support networks included in local government regulations (regional regulations). and who will be accompanied by working groups. (POKJA) then ensures that the regional development agenda is in synergy with climate change adaptation efforts in the karst ecosystem.

In addition, the financial sustainability of the project beneficiaries will be guaranteed in the project interventions by strengthening the community economy in the downstream production (supply) process (demand). This reinforcement program is similar to strengthening the financial literacy capacity of enterprise groups, designing management of the activities of community-based business groups, and linking protection mechanisms (insurance) to disaster-vulnerable agriculture. so that the community's right to an income can be protected as a form of adaptation to climate change. The project interventions will ensure the existence of a beneficiary market system for beneficiaries in the implementation of fair trade in the Community business entities. This entity will have the appropriate technologies to produce market-oriented processed products. For there to be economic sustainability for the beneficiaries after the project.

In this section, project interventions will ensure that all community business entities will form cycle of production which is healthy as financially, in whom the operationalization of the nursery, home production of SMEs, the agency business, until the scheme of financing the insurance of agriculture. Support the project will provide the knowledge and technology to exploit resources with optimal. Of intervention of this, the beneficiaries will be equipped with knowledge management and planning finances of businesses that run. The entire revenue of the people who gained from the efforts will be guided to be allocated based on the level of need, both for the needs of home stairs, finance insurance business of agriculture, as well as for the development of business. Payment of premiums insurers agriculture will be paid by each member through a body of business community which was formed during the project. So that business entities can also function directly to protect farmers and organize production and harvest cycle beneficiaries.

Specifically, for insurance premiums, the Government of the Republic of Indonesia is willing to provide premium financing assistance of 80% of the total cost of Rp 180,000 / ha, so that people only pay Rp 36,000 / ha. In addition to that, through the scheme of management of the budget by the agency business, the members of which have land farm <1ha could jointly by area members of other mutually contiguous. So it is expected to finance it does not impact significantly on the economic community.

Likewise for the operation of nurseries and other business activities, all funding is sourced of the total revenue generated from joint business activities. Project funding mainstreaming on community-based investment schemes. The businesses that are built will also certainly be able to make a clear trade cycle from supply to demand resulting from various capacity

strengthening at the level of supply and demand strengthening through market development in accordance with what has been described in **component 1**. Market accessibility of community business units is also included in the attention specifically from project intervention activities. Expected through the **Making Market Work for the Poor (M4P)**, project intervention will conduct market negotiations, conduct an assessment of the market which is compatible with the products of the community and creates transparent and inclusive trade schemes. So the project will try to encourage fair trade as part of project achievements.

Then, after SMEs begin to establish and have consistent financial tracking, activities the project will also ensure business linkages with financial institutions to ensure business development at the end of the project period. That way the productivity can be grow and produce greater benefits to beneficiaries. So that sustainability Market accessibility of community business units is also included in the special attention of project intervention activities. Then, after the SMEs began to establish and have financial tracking consistently, project activities will also ensure business links with institutions financing to ensure business development at the end of the project period. So the sustainability of populist business entities can be sustainable. Expected economic sector micro, built on local communities, is able to continue to become new economic layers in project intervention area.

3. Social sustainability

The expected social and social sustainability of the individual beneficiaries is the continuation of the joint efforts initiated by the project through groups formed through the intervention of researchers, agricultural groups, social forestry groups and other social groups who have increased their capacities through project capacity building activities. In addition, community participation in the project's distribution of benefits is also an important element in ensuring public participation to encourage the achievement of the project's main objectives, which should eventually become an inherent sustainability system. to the lifestyle of everyday life. Knowledge management, which is a tool for recording community habits, will be incorporated into local policies as an important element in regulating a social order more adaptable to climate change and equitable in the distribution of economic benefits. Thus, **this social license to operate will be a force that will guarantee the "return" in the future**, especially in the program of strengthening regional competitiveness oriented towards the objectives of sustainable development with a wider impact.

K. ENVIRONMENTAL AND SOCIAL IMPACT AND RISK

The project is assessed for Environmental and Social Risks as Category B (moderate). Certain activities with an impact on the environment are classified as not significant or have a negative impact on the environment. impact that is not very detrimental to the environment and the social. Some project activities are related to the third and fifth principles of environmental and social principles. Screening and Management of Environmental and Social Impacts (ESMP) are provided separately and can be found in **Annex 7**.

Checklist of environmental and social principles	No further assessment required for compliance	Potential impacts and risks – further assessment and management required for compliance
<i>Compliance with the Law</i>	√	
<i>Access and Equity</i>	√	
<i>Marginalized and Vulnerable Groups</i>		√
<i>Human Rights</i>	√	
<i>Gender Equity and Women's Empowerment</i>		√
<i>Core Labour Rights</i>	√	
<i>Indigenous Peoples</i>	√	
<i>Involuntary Resettlement</i>	√	
<i>Protection of Natural Habitats</i>	√	
<i>Conservation of Biological Diversity</i>	√	
<i>Climate Change</i>	√	
<i>Pollution Prevention and Resource Efficiency</i>	√	
<i>Public Health</i>	√	
<i>Physical and Cultural Heritage</i>	√	
<i>Lands and Soil Conservation</i>	√	

PART III: IMPLEMENTATION ARRANGEMENTS

A. ARRANGEMENTS FOR PROJECT IMPLEMENTATION

This project is being carried out by several consortium member institutions as the Karst Ecosystem Adaptation Consortium (KARST). This consortium is composed of 4 institutions, namely CSOs, research organizations and local organizations. The institutions in this consortium are (1) Balang Institute as the main consortium, (2) a community forest services team (TLKM), (3) Payau Payau and (4) LOKUS Research & Consulting. Balang Institute was officially founded in February 2010 and its initial idea was to "guarantee public access to equitable and sustainable management of natural resources". In its infancy, the idea was then realized by helping rural communities in Bantaeng District, namely, the creation and education of forest farmers' groups. In keeping with the vision of Promoting community rights to equitable and sustainable management of natural resources, the Balang Institute actively promotes the concept of village forest management, community forestry and wildlife conservation in the four districts from South Sulawesi. Balang is very active in community conservation Anoa. In addition, he became the initiator of the publication of the regional regulation (Perda) regarding the recognition of indigenous peoples in the Bulukumba district. To date, some of Balang's institutional partners include: Sulawesi Community Foundation (SCF), Tim Layanan Kehutanan Masyarakat (TLKM), Global Environment Facility, CIFOR, ICRAF and Rainforest Alliance (RA).

The Community Forestry Team (TLKM) was established in 2010 with a vision of managing the sustainable management of social forestry in Sulawesi. Since TLKM's inception, the TN Cooperation Agreement has made a significant contribution to the sustainable management of Sulawesi's forests of 1,105.25 ha in the Maros and Bone districts. Babul with Community, 4,000 ha in the regency of Mamuju, Western Sulawesi with IUPHHBK, and currently offers 3,000 ha in the districts of Enrekang and Toraja through the UUPHKm. In addition, TLKM is also part of the POKJA Forest Acceleration Team in South Sulawesi, becoming the initiator of forest-related conflict resolution, particularly in the Bantimurung Bulusarung National Park, in the Regency. Maros, and weighs heavily on studies specifically on hate around the forest area (Enrekang, Toraja, North Toraja, Pinrang and Mamasa). Several TLKM partners at the national and international levels to date, such as: Sulawesi Community Foundation (CFS), Community Forestry Communication Forum (FKKM), Shamdana Institute, Perkumpulan Inisiatif, Adimitra, PT. PLN Persero Sulsebar, Recoft, WWF and MCAI.

The project management implementation structure is formed according to the needs of the program and is occupied by each member of the consortium with knowledge and curriculum-based experience. In addition, in order to avoid conflicts of interest in the implementation of the project, a committee will be composed of each of the consortium representatives so that strategic decisions can be jointly agreed and executed on behalf of the consortium. (see *Annex 8*. for Structure of Project Implementing Unit)

The project will also take the form of a POKJA API team at the provincial level to ensure policy direction, program planning and action plans in the project, so that correspond to the level of the national implementing entity. The team includes the Food Resilience Service, the Environmental Management Service, the Forest Service, the Office for the Empowerment of Women and Child Protection, the Agriculture Department, Agency of Culture and Tourism, Office of Cooperatives and Industry, Office of Health, Forest Management Agency and Regional Disaster Management

Agency. In addition, at the site level, the Forestry Partnership Group will be formed as an institution providing protection and participation in climate change action plans, while supporting the participating media actively disseminating information on climate change adaptation issues will encourage parties to partisanship and participation in the action plan. climate change.

B. FINANCIAL AND PROJECT RISK MANAGEMENT

All risks related to the implementation of the project were analyzed during the participatory planning phase. Strategies to minimize risk have been included in the project planning to ensure that managed risks can be handled properly. The description of the risks and levels of risk and the strategies envisaged is presented in the following table.

Type of Risk	Description of Risk	Risk category (H/M/L)	Risk Mitigation Strategy
Institution	Changes in project implementing personnel will affect project implementation and competent staff	Low	In establishing working relationships with PMU, the Consortium applies a recruitment system with output of work contracts during the project. With this mechanism, the attachment of personnel to the consortium in achieving project objectives will be the legal basis.
Finance	Delays in disbursing funds, procurement, and a long process of approval will delay the implementation of the project	Medium	Build active communication with funders and carry out all activities in accordance with applicable financial procedures. On the other hand, the consortium leadership will play a role and be responsible in anticipating if at any time there is a delay in disbursing funding that can hamper the course of the project
Social	The possibility of women's involvement in the project will be lacking, this is due to the culture of women in Sulawesi who require women to take care of the household or kitchen matters	Medium	Provide understanding to target communities in the form of group discussions by field facilitators. In addition, women's groups will also be involved in disaster gender training and food security activities
	Communities are less aware of change and less enthusiastic about responding to disasters. If that happens, it is difficult to get commitment in food development and climate change adaptation it is difficult for beneficiaries and communities to receive knowledge and methods in implementing environmentally friendly forest management and agriculture	Low	This project will implement methods that are participatory in nature so that the community can be given an understanding of the impact of climate change. In addition, the mentoring process will continue to take place by utilizing field facilitators in the target locations.

C. ENVIRONMENTAL AND SOCIAL RISK MANAGEMENT

The overall scope of the project is related to the adaptation of livelihoods in the karst ecosystem. Some of the proposed adaptation measures will have an impact on environmental and social principles. The detailed explanation of impact and environmental management and assessment. (See *Annex 7*)

D. MONITORING AND EVALUATION

Project monitoring plan “Sustainable Livelihood and Ecoenterprise in Karst Ecosystem for Adapting to Climate Change” **It will be done to see and measure** : 1. Obedience (compliance), M & E to determine if the actions of administrators, staff and all involved follow established standards and procedures; 2. The audit, M & E to determine if the sources and services destined to certain parts (objectives) have reached them; 3 Reports (countable), M & E produces

information that helps to "calculate" the results of social change and society as a result of the implementation of policies after a certain period of time.

Although the evaluation of the evaluation activities plan to “Sustainable Livelihood and Ecoenterprise in Karst Ecosystem for Adapting to Climate Change” It is carried out in an integral, transparent and responsible manner when comparing the realization of inputs, products and results with the indicators of the achievements of the project plan through the adjustment based on the monitoring schedule. With the initial stages of carrying out a baseline survey to measure the initial indicators, the results will increase based on the results of the program interventions. Next, the intermediate and annual survey is presented, to measure the degree of progress and the process of achieving indicators according to the goal and can be achieved well. Each of these stages will be disseminated to the administration to see the scope of progress, the restrictions and the strategies that will then be used to achieve the indicators and processes as expected. (see *Annex 3*. Monitoring and evaluation of activities and budget.)

E. RESULT FRAMEWORK

See *Annex 1* for detail project result framework (including milestones, targets, and indicators)

F. ALIGNMENT WITH ADAPTATION FUND RESULT FRAMEWORK

Alignment with AF result framework attached on *Annex 6. Alignment with Adaptation Fund Result Framework*

G. BUDGET

Amount of financing requested is \$946,659, with project execution costs are \$81,990 of the total budget. (see *Annex 4*. for detailed budget).

H. DISBURSEMENT SCHEDULE

The disbursement procedure is performed quarterly (every three months), the first quarter is disbursed at the beginning of the program and the next disbursement is made every three months for each quarter. The parties involved in the disbursement procedure are Program Responsible, Project Manager and Finance Manager. The form for the disbursement is the budgeting plan, photocopy of the bank account book and request to send funds. Disbursement schedule and time-bound quarterly *attached on Annex 2. Disbursement Schedule*

PART IV: ENDORSEMENT BY GOVERNMENT AND CERTIFICATION BY THE IMPLEMENTING ENTITY

A. RECORD OF ENDORSEMENT ON BEHALF OF THE GOVERNMENT¹⁶

Prof. Dr. Ir. H.M. Nurdin Abdullah, M. Agr Governor of South Sulawesi Head of Government of South Sulawesi	Date : December, 17, 2018
H. Syamsuddin A. Hamid S.E. Regent of Pangkajene dan Kepulauan Head of Government of Pangkajene dan Kepulauan	Date : December, 13, 2018
Ir. Yusak Mangetan, M.AB. Plh. Office Manager Bantimurung Bulusaraung National Park	Date : December, 20, 2018

B. IMPLEMENTING ENTITY CERTIFICATION

I certify that this proposal has been prepared in accordance with guidelines provided by the Adaptation Fund Board, and prevailing National Development and Adaptation Plans (President Decree No. 16/2015; P.13/MENLHK/Setjen/OTL.0/1/2016; P.33/MENLHK/Setjen/Kum.1/3/2016; Indonesia Intended Nationally Determined Contribution/INDC; COP 21; Paris Agreement signed by Government of Indonesia; Book and Map of Information System of Vulnerability Index Data (SIDIK); Permen-KP No. 2 year 2013; Climate Change Adaptation National Action Plan) and subject to the approval by the Adaptation Fund Board commit to implementing the Project in compliance with the Environmental and Social Policy of the Adaptation Fund and on the understanding that the Implementing Entity will be fully (legally and financially) responsible for the implementation of this Project..

⁶. Each Party shall designate and communicate to the secretariat the authority that will endorse on behalf of the national government the projects and programmes proposed by the implementing entities.



Monica Tanuhandaru

**Executive Director of Partnership for Governance Reform in Indonesia
(Kemitraan)**

Implementing Entity Coordinator

Date: 5 August 2019

Tel. and email: +62-21-7279 9566;
Monica.Tanuhandaru@kemitraan.or.id

Project Contact Person: **Dewi Rizki**

Tel. and Email: +62-21-7279 9566; Dewi.Rizki@kemitraan.or.id

ANNEX 1: RESULT FRAMEWORK

Outcome/ Output	Indicator	Baseline	Goal	Source Of Verification
Component I. Increased accessible food security in the sustenance adaptation of the impact of climate change in the karst ecosystem				
Outcome 1.1 Increased capacity and partisanship of the parties to overcome climate change and sustainable development with low carbon in the Karst ecosystem	275 people increased their capacity and disaster surveillance.	0	275 people in 2020	Questionnaire, report, Documentation
Output 1.1.1 Greater capacity of the parties to overcome climate change and low sustainable development.	150 people increased their understanding and awareness. 125 people have availability in disaster	0 0	150 people have increased their understanding and awareness (2019) 125 people increased their understanding and awareness (2019 = 75 people, -2020 = 25 people)	Questionnaire, report, Documentation
Output 1.1.2 The growing partisanship of the parties in overcoming climate change and low carbon sustainable development.	2 The party bias scheme as a way to adapt to climate change. 100 trees have been adopted 20 news / information on climate change are neutralized by the community 5 climatic villages were successfully formed	0	2 bias schemes (2020) 100 trees (2020) 20 news / information (2019) 5 towns	Report, Documentation Decree

Outcome 1.2 Accessed several schemes / programs that could develop food products that are environmentally friendly and low carbon by the community around the karst ecosystem.	15 schemes / programs to develop environmentally friendly and low carbon food products	0	15 schemes / programs 2020	Report, Documentation
Output 1.2.1 The existence of a social forestry scheme that embodies forest food security throughout the Karst ecosystem.	5 conservation associations	0	5 conservation associations (2019)	Cooperative cooperation manuscript.
Output 1.2.2 Higher quality, quantity, added value and certainty of agricultural products.	10 Demo plot and agricultural insurance.	0	10 Demo plot and agricultural insurance. (2020)	Report, Documentation
Output 1.2.3 Strengthening market systems for food products that are environmentally friendly.	1 Smart Outlet that works and sells agricultural products friendly to the environment.	0	1 Smart Outlet runs (2020)	Report, Documentation
Component II. Strengthening of regional planning and policy towards adaptation measures to climate change in the karstic ecosystem.				
Outcome 2.1 The internalization of climate change adaptation actions through planning documents and policies to adapt to climate change.	3 regional planning and policy products that promote actions to adapt to climate change.	Regional planning products and policies that previously contained adaptation to climate change.	3 policy on product planning and policy (2020) products that support adaptation to climate change until the end of the project	Copy of planning documents and policies, Report
Output 2.1.1 The internalization of adaptation actions to climate change towards regional policies.	1 Product policies that internalize adaptation actions to climate change.	0	1 Product policies (2020)	Copy of planning documents and policies, Report
Output 2.1.2 The existence of the RAD API and the Roadmap of adaptation	RAD API and Roadmap API in the Karst ecosystem are available	0	RAD API & Roadmap API Ecosystem Karst (2020)	Copy of planning documents, Report

to climate change in the karst ecosystem				
Component III. Strengthening information systems from the knowledge management and learning of climate change adaptation programs by the parties.				
Outcome 3.1 Knowledge management and learning about climate change adaptation programs by the parties.	6 knowledge management products are shared learning with the parties.	0	6 knowledge management products become joint learning of the parties (2020)	-
Output 3.1.1 The Adaptation to Climate Change Program in the Karst Ecosystem was concluded.	6 published products of knowledge management.	0	6 published products of knowledge management (2020).	-

Project/Programme Components	Output	Activities	Information about financing
1. Increased accessible food security in the sustainance adaptation of the impact of climate change in the karst ecosystem	1.1.1. Greater capacity of the parties to face climate change and low carbon sustainable development	1. Local training on climate adaptation at the village level. 2. Climate Adaptation Workshop at the district level 3. Regional workshop on adaptation to climate change. 4. Low-carbon sustainable development workshop at the district level 5. Workshop on sustainable development with low-carbon at the regional level 6. Preparation of the brief police adaptation to climate change in the framework of the SDGs 7. Local training Disasters of basic education. 8. Local training. Management of emergency response and early warning. 9. Place of simulation training and disaster plan. 10. The localism of gender in the disaster. 11. Training in food security in disaster management. 12. Locate diseases related to climate control.	7x 2x 1x 1x 1x 1x 1x 1x 1x 1x 5x 2x Design and printing services. 1x
	1.1.2 The growing partisanship of the parties in overcoming climate change and low carbon sustainable development.	1. Preparation of a Participatory Climate Change Adaptation Program Master Plan 2. Facilitation Mapping of the distribution of trees to be adopted. 3. Provide information system for the tree adoption program. 4. Facilitation of FGD 5. Tree Adaptation Program Workshop to support the adaptation of livelihoods. 6. Facilitation of the elaboration of infographic leaves and posters for the adoption of trees. 7. Provision of print media and online promotion. 8. Participatory action for formative training 9. Basic training of journalists 10. Training of online journalists and management of social networks. 11. Train journalists in environmental effectiveness and low carbon development. 12. Facilitation of the strengthening of local action through the Establishment of Climate Villages.	1x 1x 1x 1x 1x 1x 1x 1x 1x 1x 1x 5x
	1.2.1 The existence of a social forestry scheme that embodies forest food security	1. Meetings at village level initiating the establishment of forest association groups. 2. Facilitation of drafting proposals for groups of forest associations. 3. Workshop on the formation of social forestry groups in forestry associations. 4. Strengthening the capacity of forest association groups. 5. Facilitation of the preparation of the RKT and RPP group. 6. Facilitation of the strengthening of the development of local businesses based on forest foods.	10x 5 the group 2x 4x 2x

	throughout the Karst ecosystem.	<ul style="list-style-type: none"> 7. Facilitation of the acquisition and sowing of seeds for the restoration of ecosystems. 8. Operationalization of escorts in the town. 	<ul style="list-style-type: none"> 4x 5. 000 seeds 18x
	1.2.2 Higher quality, quantity, added value and certainty of agricultural products.	<ul style="list-style-type: none"> 1. Training in the elaboration of organic fertilizer. 2. Training of the System Rice Intensification (SRI). 3. Mina Padi training. 4. Training in diversification of agricultural products. 5. Post-harvest training. 6. Provision of Mina Padi demonstration plots with precision agriculture models. 7. Facilitating Demplot SRI 8. Facilitate the development of local seed huts friendly to the environment. 9. Provision of agricultural insurance. 10. Facilitation of efficient and ecological production equipment. 11. Facilitation of Production Houses for Food Dissection Products. 12. Provision of materials and equipment for the packaging of local food products. 13. Facilitation of making integrated sowing calendar applications. 	<ul style="list-style-type: none"> 5x 5x 5x 5x 5x 5 demonstration plot 5 demonstration plot 8 seed huts 10 times 10 packages 10 packages 10 packages 5 packages
	1.2.3 Strengthening market systems for food products that are environmentally friendly.	<ul style="list-style-type: none"> 1. Management study of the supply chain. 2. Facilitation of commercial agreements for ecological models of agricultural and forestry products. 3. Facilitation of the preparation of Operations Management (MoP). 4. Multi-stakeholder meetings internalize the market system in village programs. 5. Facilitate the licensing of community products of MSMEs. 6. Facilitation of making documents of offer of community products with potential buyers. 7. Facilitation of product promotion (online and offline) 8. Facilitation of outputs. 9. Facilitation of meetings of MSMEs with financial institutions through innovative financing schemes. 	<ul style="list-style-type: none"> 2 study 5 business model 5 MoP 10x 5 license 2 document 5 product 1 outlet 3x
2. Strengthening of regional planning and policy towards adaptation measures to climate change in	2.1.1 The internalization of adaptation actions to climate change	<ul style="list-style-type: none"> 1. Workshop on the start of the formation of the API Working Group. 2. Facilitation of the routine meeting of the API Working Group 3. Workshop on the role of regional development in adapting to climate change. 4. Study of low carbon regional development in the framework of adaptation to climate change. 5. Preparation of Monitoring Plans for the Parties in strengthening the climate change adaptation framework. 	<ul style="list-style-type: none"> 1x 6x 1x 1x *a 1x *a

the karstic ecosystem.	towards regional policies.	6. Facilitation of the review of regional planning documents to strengthen the climate change adaptation framework. 7. Meeting on the internalization of climate change adaptation at the village level.	1x *a 10x
	2.1.2 The existence of the RAD API and the Roadmap of adaptation to climate change in the KARST ecosystem	1. Study and preparation of the SULSEL RAD API. 2. API compilation of road map in the karstic ecosystem. 3. RAD API Sulsel Consultation Workshop 4. Workshop on RAD API Sulsel.	1x *a 1x *a 1x 1x
3. Strengthening information systems from the knowledge management and learning of climate change adaptation programs by the parties	3.1.1. The Adaptation to Climate Change Program was concluded in the largest Karst ecosystem in the world.	1. Establishment of police crimes. 2. Make books: success stories and comics. 3. Realization of infographics of the program. 4. Creation and operationalization of the program's website. 5. Study the impact of the program on the condition of the landscape and the social landscape. 6. Making short films and documentaries. 7. Monitoring and evaluation.	2 police brief 3 books 6 infographics 1 time 1 time 1 time 1 time

ANNEX 2: DISBURSEMENT SCHEDULE

Time-bound quarterly attached

	Quartal 1	Quartal 2	Quartal 3	Quartal 4	Quartal 5	Quartal 6	Total
Scheduled Date	June 1, 2019	September 1, 2019	December 1, 2019	March 1, 2020	June 1, 2020	September 1, 2020	
Implementing Cost	\$ 168,065	\$ 317,910	\$ 149,882	\$ 105,921	\$ 92,783	\$ 40,108	\$ 874,669
Program Excecution Cost	\$ 14,430	\$ 13,360	\$ 13,360	\$ 13,360	\$ 23,704	\$ 13,360	\$ 91,816
Total	\$182,495	\$ 331,270	\$ 163,242	\$ 119,281	\$ 116,487	\$ 53,468	\$ 966,485

Timeline Schedule

[illegible]

[illegible]

[illegible]

[illegible]

[illegible]

ANNEX 3: MONITORING AND EVALUATION

Monitoring and Evaluation Activities and Budget

Activities	Frekuensi	Sasaran	Biaya (\$)	Waktu
Baseline Survey	1	Monitoring and evaluation	\$ 3500	The first month of the project
Dissemination Money	1	Management	\$ 1000	Third month of the Project
Mid Year Survey	2	Implementation Process	\$ 3500	Sixth month of the project
Dissemination Mid Year Movev	2	Management	\$ 1000	Sixth month of the project
Evaluation Survey	1	Implementation Process	\$ 3500	3 Months End of project
Dissemination Evaluation Survey	1	Management	\$ 1000	3 Months End of project
Audit Independent	1	Management	\$ 5000	3 Months End of project

Project Monitoring and Evaluation Plan

Project Results	Indicators	Frequency	Responsible	Monitoring Methods & Tools
Goal	<ol style="list-style-type: none"> 1. Increased capacity and stakeholderism to address climate change and sustainable low-carbon development in the Karst ecosystem 2. Greater accessible food security in adapting the impact of climate change on the karst ecosystem. 3. Strengthening regional planning and policy towards actions to adapt to climate change in the karst ecosystem. 	Average and final projects	Monev Expert	Review of the Annual Report
Outcome				
Outcome 1.1 Increased capacity and partisanship of the parties to overcome climate change and sustainable development with low carbon in the Karst ecosystem	275 people increased their capacity and disaster surveillance.	Quarterly	Monev Expert	Review of the Annual Report
Outcome 1.2 Accessed several schemes / programs that could develop food products that are environmentally	15 schemes / programs to develop environmentally friendly and low carbon food products	Quarterly	Monev Expert	Review of the Annual Report

friendly and low carbon by the community around the karst ecosystem.				
Outcome 2.1 The internalization of climate change adaptation actions through planning documents and policies to adapt to climate change.	3 regional planning and policy products that promote actions to adapt to climate change.	Quarterly	Expert MONEV	Review of quarterly reports
Outcome 3.1 Knowledge management and learning about climate change adaptation programs by the parties.	6 knowledge management products are shared learning with the parties.	Quarterly	Expert MONEV	Review of quarterly reports
Output				
Output 1.1.1 Greater capacity of the parties to overcome climate change and low sustainable development.	150 people increased their understanding and awareness. 125 people have availability in disaster	Monthly	Expert MONEV	Review of monthly reports
Output 1.1.2 The growing partisanship of the parties in overcoming climate change and low carbon sustainable development.	2 The party bias scheme as a way to adapt to climate change. 100 trees have been adopted 20 news / information on climate change are neutralized by the	Monthly	Expert MONEV	Review activity reports

	community 5 climatic villages were successfully formed			
Output 1.2.1 The existence of a social forestry scheme that embodies forest food security throughout the Karst ecosystem.	5 conservation associations	Monthly	Expert MONEV	Review activity reports
Output 1.2.2 Higher quality, quantity, added value and certainty of agricultural products.	10 demonstration plots and agricultural insurance.	Monthly	Expert MONEV	Review activity reports
Output 1.2.3 Strengthening market systems for food products that are environmentally friendly.	1 Smart Outlet that works and sells agricultural products friendly to the environment.	Monthly	Expert MONEV	Review activity reports
Output 2.1.1 The internalization of adaptation actions to climate change towards regional policies.	1 Product policies that internalize adaptation actions to climate change.	Monthly	Expert MONEV	Review activity reports
Output 2.1.2 The existence of the RAD API and the Roadmap of	RAD API and Roadmap API in the Karst ecosystem are available	Monthly	Expert MONEV	Review activity reports

adaptation to climate change in the KARST ecosystem				
Output 3.1.1 The Adaptation to Climate Change Program in the Karst Ecosystem was concluded.	6 published products of knowledge management.	Monthly	Expert MONEV	Review activity reports

ANNEX 4: BUDGET

Program	Activity description	Detail Budget						
		Cost / Unit	Unit	Satuan	Frequency	unit	Total cost	USD
Component 1: Increased accessible food security in the sustenance adaptation of the impact of climate change in the karst ecosystem							Rp 9,970,300,000	\$ 687,607
Outcome 1.1 Increased capacity and partisanship of the parties to overcome climate change and sustainable development with low carbon in the Karst ecosystem							Rp 1,498,400,000	\$ 103,338
Output 1.1.1: Greater capacity of the parties to overcome climate change and low sustainable development.							Rp 887,050,000	\$ 61,176
Activity 1.1.1.1: Workshop-Training on Climate Change Adaptation at the village level							Rp 138,550,000	\$ 9,555
Full Board Meeting		Rp 450,000	29	Person	7	Time	Rp 91,350,000	\$ 6,300
Local Transport for Participants		Rp 150,000	20	Person	7	Time	Rp 21,000,000	\$ 1,448
Local Transport for speakers/trainers		Rp 150,000	2	Person	7	Time	Rp 2,100,000	\$ 145
Perdiem for the team/committee	Perdiem for Fullday	Rp 150,000	2	Person	7	Time	Rp 2,100,000	\$ 145
Fee for speakers/trainers		Rp 1,500,000	2	Person	7	Time	Rp 21,000,000	\$ 1,448
Workshop Kit	Consisting of pens, notebooks, goodie bags	Rp 50,000	20	Person	1	Package	Rp 1,000,000	\$ 69
Activity 1.1.1.2: District level Climate Change Adaptation Workshop							Rp 85,200,000	\$ 5,876
Full Board Meeting		Rp 450,000	60	Person	2	Time	Rp 54,000,000	\$ 3,724
Local Transport for Participants		Rp 150,000	60	Person	2	Time	Rp 18,000,000	\$ 1,241
Local Transport for Speakers		Rp 150,000	2	Person	2	Time	Rp 600,000	\$ 41

Perdiem for the team/committee	Perdiem for Fullday	Rp 150,000	2	Person	2	Time	Rp 600,000	\$ 41
Fee for speakers		Rp 1,500,000	2	Person	2	Time	Rp 6,000,000	\$ 414
Workshop Kit	Consisting of pens, notebooks, goodie bags	Rp 50,000	60	Person	2	Package	Rp 6,000,000	\$ 414
Activity 1.1.1.3: Regional level Climate Change Adaptation Workshop							Rp 70,250,000	\$ 4,845
Full Board Meeting		Rp 450,000	100	Person	1	Time	Rp 45,000,000	\$ 3,103
Local Transport for Participants		Rp 150,000	100	Person	1	Time	Rp 15,000,000	\$ 1,034
Local Transport for Speakers		Rp 150,000	3	Person	1	Time	Rp 450,000	\$ 31
Perdiem for the team/committee	Perdiem for Fullday	Rp 150,000	2	Person	1	Time	Rp 300,000	\$ 21
Fee for speakers		Rp 1,500,000	3	Person	1	Time	Rp 4,500,000	\$ 310
Workshop Kit	Consisting of pens, notebooks, goodie bags	Rp 50,000	100	Person	1	Package	Rp 5,000,000	\$ 345
Activity 1.1.1.4: District-level Sustainable Low Carbon Development Workshop							Rp 42,600,000	\$ 2,938
Full Board Meeting		Rp 450,000	60	Person	1	Time	Rp 27,000,000	\$ 1,862
Local Transport for Participants		Rp 150,000	60	Person	1	Time	Rp 9,000,000	\$ 621
Local Transport for Speakers		Rp 150,000	2	Person	1	Time	Rp 300,000	\$ 21
Perdiem for the team/committee	Perdiem for Fullday	Rp 150,000	2	Person	1	Time	Rp 300,000	\$ 21
Fee for speakers		Rp 1,500,000	2	Person	1	Time	Rp 3,000,000	\$ 207
Workshop Kit	Consisting of pens, notebooks, goodie bags	Rp 50,000	60	Person	1	Package	Rp 3,000,000	\$ 207
Activity 1.1.1.5: Regional-level Sustainable Low Carbon Development Workshop							Rp 70,250,000	\$ 4,845
Full Board Meeting		Rp 450,000	100	Person	1	Time	Rp 45,000,000	\$ 3,103
Local Transport for Participants		Rp 150,000	100	Person	1	Time	Rp 15,000,000	\$ 1,034
Local Transport for Speakers		Rp 150,000	3	Person	1	Time	Rp 450,000	\$ 31
Perdiem for the team/committee	Perdiem for Fullday	Rp 150,000	2	Person	1	Time	Rp 300,000	\$ 21

Fee for speakers		Rp 1,500,000	3	Person	1	Time	Rp 4,500,000	\$ 310
Workshop Kit	Consisting of pens, notebooks, goodie bags	Rp 50,000	100	Person	1	Package	Rp 5,000,000	\$ 345
Activity 1.1.1.6: Preparation of a Brief Police Adaptation to Climate Change within the framework of the SDGs							Rp 95,900,000	\$ 6,614
Honor Drafting Team/Fee		Rp 1,000,000	2	Person	30	Day	Rp 60,000,000	\$ 4,138
Honor Reviewer/Fee		Rp 1,500,000	1	Person	10	Day	Rp 15,000,000	\$ 1,034
Consumption	Lunch + Snack	Rp 50,000	3	Person	6	Time	Rp 900,000	\$ 62
Printing cost		Rp 100,000	200	Eksamplar	1	Time	Rp 20,000,000	\$ 1,379
Activity 1.1.1.7: Training for disaster basic education							Rp 107,700,000	\$ 7,428
Full Board Meeting		Rp 450,000	30	Person	4	Day	Rp 54,000,000	\$ 3,724
Local Transport for Participants		Rp 150,000	30	Person	4	Time	Rp 18,000,000	\$ 1,241
Local Transport for Speakers		Rp 150,000	5	Person	4	Time	Rp 3,000,000	\$ 207
Perdiem for the team/committee	Perdiem for Fullday	Rp 150,000	2	Person	4	Day	Rp 1,200,000	\$ 83
Fee for speakers		Rp 1,500,000	5	Person	4	Day	Rp 30,000,000	\$ 2,069
Workshop Kit	Consisting of pens, notebooks, goodie bags	Rp 50,000	30	Person	1	Package	Rp 1,500,000	\$ 103
Activity 1.1.1.8: Workshop-Training Emergency response management and early warning							Rp 71,250,000	\$ 4,914
Full Board Meeting		Rp 450,000	30	Person	3	Day	Rp 40,500,000	\$ 2,793
Local Transport for Participants		Rp 150,000	30	Person	3	Time	Rp 13,500,000	\$ 931
Local Transport for Speakers/trainers		Rp 150,000	3	Person	3	Time	Rp 1,350,000	\$ 93
Perdiem for the team/committee	Perdiem for Fullday	Rp 150,000	2	Person	3	Day	Rp 900,000	\$ 62
Fee for speakers/trainers		Rp 1,500,000	3	Person	3	Day	Rp 13,500,000	\$ 931
Workshop Kit	Consisting of pens, notebooks, goodie bags	Rp 50,000	30	Person	1	Package	Rp 1,500,000	\$ 103

Activity 1.1.1.9: Simulation and disaster plan Training		Rp	71,250,000	\$ 4,914
Full Board Meeting		Rp	40,500,000	\$ 2,793
Local Transport for Participants		Rp	13,500,000	\$ 931
Local Transport for trainers		Rp	1,350,000	\$ 93
Perdiem for the team/committee	Perdiem for Fullday	Rp	900,000	\$ 62
Fee for trainers		Rp	13,500,000	\$ 931
Workshop Kit	Consisting of pens, notebooks, goodie bags	Rp	1,500,000	\$ 103
Activity 1.1.1.10: Workshop-Training Gender in disaster management			Rp	44,700,000
Full Board Meeting		Rp	27,000,000	\$ 1,862
Local Transport for Participants		Rp	9,000,000	\$ 621
Local Transport for Speakers/trainers		Rp	600,000	\$ 41
Perdiem for the team/committee	Perdiem for Fullday	Rp	600,000	\$ 41
Fee for speakers/trainers		Rp	6,000,000	\$ 414
Workshop Kit	Consisting of pens, notebooks, goodie bags	Rp	1,500,000	\$ 103
Activity 1.1.1.11: Workshop-training on food security in disaster			Rp	44,700,000
Full Board Meeting		Rp	27,000,000	\$ 1,862
Local Transport for Participants		Rp	9,000,000	\$ 621
Local Transport for Speakers/trainers		Rp	600,000	\$ 41
Perdiem for the team/committee	Perdiem for Fullday	Rp	600,000	\$ 41
Fee for speakers/trainers		Rp	6,000,000	\$ 414
Workshop Kit	Consisting of pens, notebooks, goodie bags	Rp	1,500,000	\$ 103

Activity 1.1.1.12: Workshop-training in controlling climate-related diseases							Rp 44,700,000	\$ 3,083
Full Board Meeting		Rp 450,000	30	Person	2	Day	Rp 27,000,000	\$ 1,862
Local Transport for Participants		Rp 150,000	30	Person	2	Time	Rp 9,000,000	\$ 621
Local Transport for Speakers/trainers		Rp 150,000	2	Person	2	Time	Rp 600,000	\$ 41
Perdiem for the team/committee	Perdiem for Fullday	Rp 150,000	2	Person	2	Day	Rp 600,000	\$ 41
Fee for speakers/trainers		Rp 1,500,000	2	Person	2	Day	Rp 6,000,000	\$ 414
Workshop Kit	Consisting of pens, notebooks, goodie bags	Rp 50,000	30	Person	1	Package	Rp 1,500,000	\$ 103
Output 1.1.2: The growing partisanship of the parties in overcoming climate change and low carbon sustainable development.							Rp 611,350,000	\$ 42,162
Activity 1.1.2.1: Preparation of a Participatory Climate Change Adaptation Program Master Plan							Rp 55,750,000	\$ 3,845
Honor Drafting Team/Fee		Rp 1,000,000	2	Person	20	Day	Rp 40,000,000	\$ 2,759
Honor Reviewer/Fee		Rp 1,500,000	1	Person	10	Day	Rp 15,000,000	\$ 1,034
Consumption	Lunch + Snack	Rp 50,000	3	Person	5	Time	Rp 750,000	\$ 52
Activity 1.1.2.2: Facilitation of mapping the distribution of trees to be adopted							Rp 65,000,000	\$ 4,483
Honor Survey Team/Fee		Rp 15,000,000	1	Team	1	Time	Rp 15,000,000	\$ 1,034
Honor Mapping Team/Fee		Rp 45,000,000	1	Team	1	Time	Rp 45,000,000	\$ 3,103
Consumption of Discussion		Rp 5,000,000	1	Package	1	Time	Rp 5,000,000	\$ 345
Activity 1.1.2.3: Providing information systems for tree adoption programs							Rp 10,000,000	\$ 690
System manufacturing services		Rp 10,000,000	1	Package	1	Time	Rp 10,000,000	\$ 690
Activity 1.1.2.4: Facilitating FGD							Rp 24,300,000	\$ 1,676
Full Board Meeting		Rp 450,000	40	Person	1	Time	Rp 18,000,000	\$ 1,241
Local Transport for Participant		Rp 150,000	40	Person	1	Time	Rp 6,000,000	\$ 414

Perdiem for the team /committee	Perdiem for Fullday	Rp 150,000	2	Person	1	Time	Rp 300,000	\$ 21
Activity 1.1.2.5: Workshop of Tree Adaptation Program in supporting livelihood adaptation							Rp 70,250,000	\$ 4,845
Full Board Meeting		Rp 450,000	100	Person	1	Time	Rp 45,000,000	\$ 3,103
Local Transport for Participants		Rp 150,000	100	Person	1	Time	Rp 15,000,000	\$ 1,034
Local Transport for Speakers		Rp 150,000	3	Person	1	Time	Rp 450,000	\$ 31
Perdiem for the team/committee	Perdiem for Fullday	Rp 150,000	2	Person	1	Time	Rp 300,000	\$ 21
Fee for speakers		Rp 1,500,000	3	Person	1	Time	Rp 4,500,000	\$ 310
Workshop Kit	Consisting of pens, notebooks, goodie bags	Rp 50,000	100	Person	1	Package	Rp 5,000,000	\$ 345
Activity 1.1.2.6: Facilitation of making leaf leats and infographic posters for tree adoption							Rp 58,750,000	\$ 4,052
Honor Designer/Fee		Rp 5,000,000	1	Team	1	Time	Rp 5,000,000	\$ 345
Leafleat Printing Cost	1000 copies	Rp 10,000	1000	Eksamplar	1	Time	Rp 10,000,000	\$ 690
Poster Printing Cost	1000 copies	Rp 10,000	1000	Eksamplar	1	Time	Rp 10,000,000	\$ 690
Banner Printing Cost	750 copies	Rp 45,000	750	Eksamplar	1	Time	Rp 33,750,000	\$ 2,328
Activity 1.1.2.7: Facilitation of print and online media promotion							Rp 50,000,000	\$ 3,448
Promotion Cost		Rp 50,000,000	1	Package	1	Time	Rp 50,000,000	\$ 3,448
Activity 1.1.2.8: Participatory Action Research Training							Rp 44,700,000	\$ 3,083
Full Board Meeting		Rp 450,000	30	Person	2	Day	Rp 27,000,000	\$ 1,862
Local Transport for Participants		Rp 150,000	30	Person	2	Time	Rp 9,000,000	\$ 621
Local Transport for trainers		Rp 150,000	2	Person	2	Time	Rp 600,000	\$ 41
Perdiem for the team/committee	Perdiem for Fullday	Rp 150,000	2	Person	2	Day	Rp 600,000	\$ 41
Fee for trainers		Rp 1,500,000	2	Person	2	Day	Rp 6,000,000	\$ 414
Workshop Kit	Consisting of pens, notebooks, goodie bags	Rp 50,000	30	Person	1	Package	Rp 1,500,000	\$ 103

Aktivitas 1.1.2.9: Basic Journalist Training							Rp 44,700,000	\$ 3,083
Full Board Meeting		Rp 450,000	30	Person	2	Day	Rp 27,000,000	\$ 1,862
Local Transport for Participants		Rp 150,000	30	Person	2	Time	Rp 9,000,000	\$ 621
Local Transport for trainers		Rp 150,000	2	Person	2	Time	Rp 600,000	\$ 41
Perdiem for the team/committee	Perdiem untuk <i>fullday</i>	Rp 150,000	2	Person	2	Day	Rp 600,000	\$ 41
Fee for trainers		Rp 1,500,000	2	Person	2	Day	Rp 6,000,000	\$ 414
Workshop Kit	Terdiri dari Pulpen, Buku catatan, <i>goodie bag</i>	Rp 50,000	30	Person	1	Package	Rp 1,500,000	\$ 103
Activity 1.1.2.10: Training of Online Journalists and Social Media Management							Rp 23,100,000	\$ 1,593
Full Board Meeting		Rp 450,000	30	Person	1	Day	Rp 13,500,000	\$ 931
Local Transport for Participants		Rp 150,000	30	Person	1	Time	Rp 4,500,000	\$ 310
Local Transport for trainers		Rp 150,000	2	Person	1	Time	Rp 300,000	\$ 21
Perdiem for the team/committee	Perdiem for Fullday	Rp 150,000	2	Person	1	Day	Rp 300,000	\$ 21
Fee for trainers		Rp 1,500,000	2	Person	1	Day	Rp 3,000,000	\$ 207
Workshop Kit	Consisting of pens, notebooks, <i>goodie bags</i>	Rp 50,000	30	Person	1	Package	Rp 1,500,000	\$ 103
Activity 1.1.2.11: Workshop-training journalists in environmental effectiveness and low-carbon development							Rp 66,300,000	\$ 4,572
Full Board Meeting		Rp 450,000	30	Person	3	Day	Rp 40,500,000	\$ 2,793
Local Transport for Participants		Rp 150,000	30	Person	3	Time	Rp 13,500,000	\$ 931
Local Transport for speakers/trainers		Rp 150,000	2	Person	3	Time	Rp 900,000	\$ 62
Perdiem for the team/committee	Perdiem for Fullday	Rp 150,000	2	Person	3	Day	Rp 900,000	\$ 62
Fee for speakers/trainers		Rp 1,500,000	2	Person	3	Day	Rp 9,000,000	\$ 621
Workshop Kit	Consisting of pens, notebooks, <i>goodie bags</i>	Rp 50,000	30	Person	1	Package	Rp 1,500,000	\$ 103

Activity 1.1.2.12: Facilitation of Strengthening local actions through the establishment of climate villages							Rp	98,500,000	\$ 6,793	
Full Board Meeting		Rp	450,000	25	Person	5	Time	Rp	56,250,000	\$ 3,879
Local Transport for Participants		Rp	150,000	25	Person	5	Time	Rp	18,750,000	\$ 1,293
Local Transport for speakers		Rp	150,000	1	Person	5	Time	Rp	750,000	\$ 52
Perdiem for the team/committee	Perdiem for Fullday	Rp	150,000	2	Person	5	Time	Rp	1,500,000	\$ 103
Fee for speakers		Rp	1,500,000	2	Person	5	Time	Rp	15,000,000	\$ 1,034
Workshop Kit	Consisting of pens, notebooks, goodie bags	Rp	50,000	25	Person	5	Package	Rp	6,250,000	\$ 431
Outcome 1.2 Accessed several schemes / programs that could develop food products that are environmentally friendly and low								Rp	8,471,900,000	\$ 584,269
Output 1.2.1: The existence of a Social Forestry scheme that embodies forest food security around the Karst Ecosystem.								Rp	3,676,400,000	\$ 253,545
Activity 1.2.1.1: Village level meetings initiating the establishment of forestry partnership groups							Rp	127,500,000	\$ 8,793	
Consumption + Snack		Rp	55,000	50	Person	10	Time	Rp	27,500,000	\$ 1,897
Participant Local Transport		Rp	200,000	50	Person	10	Time	Rp	100,000,000	\$ 6,897
Activity 1.2.1.2: Facilitation of draft preparation of proposals for forestry partnership groups							Rp	250,000,000	\$ 17,241	
Facilitation Costs		Rp	50,000,000	1	Package	5	Time	Rp	250,000,000	\$ 17,241
Activity 1.2.1.3: Workshop on the formation of social forestry groups in forestry partnerships.							Rp	72,200,000	\$ 4,979	
Full Board Meeting		Rp	450,000	50	Person	2	Time	Rp	45,000,000	\$ 3,103
Local Transport for Participants		Rp	150,000	50	Person	2	Time	Rp	15,000,000	\$ 1,034
Local Transport for speakers		Rp	150,000	2	Person	2	Time	Rp	600,000	\$ 41
Perdiem for the team/committee	Perdiem for Fullday	Rp	150,000	2	Person	2	Time	Rp	600,000	\$ 41
Fee for speakers		Rp	1,500,000	2	Person	2	Time	Rp	6,000,000	\$ 414

Workshop Kit	Consisting of pens, notebooks, goodie bags	Rp 50,000	50	Person	2	Package	Rp 5,000,000	\$ 345
Activity 1.2.1.4: Strengthening the capacity of forestry partnership groups							Rp 150,100,000	\$ 10,352
Full Board Meeting		Rp 450,000	50	Person	4	Time	Rp 90,000,000	\$ 6,207
Local Transport for Participants		Rp 150,000	50	Person	4	Time	Rp 30,000,000	\$ 2,069
Local Transport for speakers		Rp 150,000	4	Person	4	Time	Rp 2,400,000	\$ 166
Perdiem for the team/committee	Perdiem for Fullday	Rp 150,000	2	Person	4	Time	Rp 1,200,000	\$ 83
Fee for speakers		Rp 1,500,000	4	Person	4	Time	Rp 24,000,000	\$ 1,655
Workshop Kit	Consisting of pens, notebooks, goodie bags	Rp 50,000	50	Person	1	Package	Rp 2,500,000	\$ 172
Activity 1.2.1.5: Facilitation of group RKT & RPP preparation.							Rp 244,000,000	\$ 16,828
Drafting Fee		Rp 30,000,000	4	Package	2	Time	Rp 240,000,000	\$ 16,552
Consumption		Rp 50,000	8	Person	10	Time	Rp 4,000,000	\$ 276
Activity 1.2.1.6: Facilitation of strengthening the development of local forest-based business enterprises							Rp 150,100,000	\$ 10,352
Full Board Meeting		Rp 450,000	50	Person	4	Time	Rp 90,000,000	\$ 6,207
Local Transport for Participants		Rp 150,000	50	Person	4	Time	Rp 30,000,000	\$ 2,069
Local Transport for speakers		Rp 150,000	4	Person	4	Time	Rp 2,400,000	\$ 166
Perdiem for the team/committee	Perdiem for Fullday	Rp 150,000	2	Person	4	Time	Rp 1,200,000	\$ 83
Fee for speakers		Rp 1,500,000	4	Person	4	Time	Rp 24,000,000	\$ 1,655
Workshop Kit	Consisting of pens, notebooks, goodie bags	Rp 50,000	50	Person	1	Package	Rp 2,500,000	\$ 172
Activity 1.2.1.7: Facilitation of Implementation and planting of seeds for ecosystem restoration							Rp 1,197,500,000	\$ 82,586
Honorarium of the planting area survey team		Rp 2,500,000	5	Person	1	Time	Rp 12,500,000	\$ 862
Seeds cost		Rp 85,000	10000	seedlings	1	Time	Rp 850,000,000	\$ 58,621

Distributing seeds to the field cost		Rp 15,000,000	1	Package	1	Time	Rp 15,000,000	\$ 1,034
Planting costs		Rp 25,000	10000	seedlings	1	Time	Rp 250,000,000	\$ 17,241
Maintenance cost		Rp 50,000,000	1	Package	1	Time	Rp 50,000,000	\$ 3,448
Planting equipment costs		Rp 20,000,000	1	Package	1	Time	Rp 20,000,000	\$ 1,379
Activity 1.2.1.8: Operationalization of facilitators of social forestry in the village		Rp 5,500,000	15	Person	18	Time	Rp 1,485,000,000	\$ 102,414
Output 1.2.2: Higher quality, quantity, added value and certainty of agricultural products							Rp 3,818,250,000	\$ 263,328
Activity 1.2.2.1: Training on making organic fertilizer							Rp 132,000,000	\$ 9,103
Full Board Meeting		Rp 450,000	30	Person	5	Time	Rp 67,500,000	\$ 4,655
Local Transport for Participants		Rp 150,000	30	Person	5	Time	Rp 22,500,000	\$ 1,552
Local Transport for trainers		Rp 150,000	4	Person	5	Time	Rp 3,000,000	\$ 207
Perdiem for the team/committee	Perdiem for Fullday	Rp 150,000	2	Person	5	Time	Rp 1,500,000	\$ 103
Fee for trainers		Rp 1,500,000	4	Person	5	Time	Rp 30,000,000	\$ 2,069
Workshop Kit	Consisting of pens, notebooks, goodie bags	Rp 50,000	30	Person	5	Package	Rp 7,500,000	\$ 517
Activity 1.2.2.2: Training System of Rice Intensification (SRI).							Rp 140,250,000	\$ 9,672
Full Board Meeting		Rp 450,000	30	Person	5	Time	Rp 67,500,000	\$ 4,655
Local Transport for Participants		Rp 150,000	30	Person	5	Time	Rp 22,500,000	\$ 1,552
Local Transport for trainers		Rp 150,000	5	Person	5	Time	Rp 3,750,000	\$ 259
Perdiem for the team/committee	Perdiem for Fullday	Rp 150,000	2	Person	5	Time	Rp 1,500,000	\$ 103
Fee for trainers		Rp 1,500,000	5	Person	5	Time	Rp 37,500,000	\$ 2,586
Workshop Kit	Consisting of pens, notebooks, goodie bags	Rp 50,000	30	Person	5	Package	Rp 7,500,000	\$ 517

Activity 1.2.2.3: Training Mina Padi (Agrofisbery)							Rp	132,000,000	\$ 9,103	
Full Board Meeting		Rp	450,000	30	Person	5	Time	Rp	67,500,000	\$ 4,655
Local Transport for Participants		Rp	150,000	30	Person	5	Time	Rp	22,500,000	\$ 1,552
Local Transport for trainers		Rp	150,000	4	Person	5	Time	Rp	3,000,000	\$ 207
Perdiem for the team/committee	Perdiem for Fullday	Rp	150,000	2	Person	5	Time	Rp	1,500,000	\$ 103
Fee for trainers		Rp	1,500,000	4	Person	5	Time	Rp	30,000,000	\$ 2,069
Workshop Kit	Consisting of pens, notebooks, goodie bags	Rp	50,000	30	Person	5	Package	Rp	7,500,000	\$ 517
Activity 1.2.2.4: Agricultural Product Dissertation Training								Rp	140,250,000	\$ 9,672
Full Board Meeting		Rp	450,000	30	Person	5	Time	Rp	67,500,000	\$ 4,655
Local Transport for Participants		Rp	150,000	30	Person	5	Time	Rp	22,500,000	\$ 1,552
Local Transport for trainers		Rp	150,000	5	Person	5	Time	Rp	3,750,000	\$ 259
Perdiem for the team/committee	Perdiem for Fullday	Rp	150,000	2	Person	5	Time	Rp	1,500,000	\$ 103
Fee for trainers		Rp	1,500,000	5	Person	5	Time	Rp	37,500,000	\$ 2,586
Workshop Kit	Consisting of pens, notebooks, goodie bags	Rp	50,000	30	Person	5	Package	Rp	7,500,000	\$ 517
Activity 1.2.2.5: Post-harvest training								Rp	123,750,000	\$ 8,534
Full Board Meeting		Rp	450,000	30	Person	5	Time	Rp	67,500,000	\$ 4,655
Local Transport for Participants		Rp	150,000	30	Person	5	Time	Rp	22,500,000	\$ 1,552
Local Transport for trainers		Rp	150,000	3	Person	5	Time	Rp	2,250,000	\$ 155
Perdiem for the team/committee	Perdiem for Fullday	Rp	150,000	2	Person	5	Time	Rp	1,500,000	\$ 103
Fee for trainers		Rp	1,500,000	3	Person	5	Time	Rp	22,500,000	\$ 1,552
Workshop Kit	Consisting of pens, notebooks, goodie bags	Rp	50,000	30	Person	5	Package	Rp	7,500,000	\$ 517
Activity 1.2.2.6: Facilitation of Mina Padi Demonstration plot								Rp	100,000,000	\$ 6,897
Minapadi Demonstration plots bulid cost		Rp	20,000,000	1	Package	5	Demonstration Plot	Rp	100,000,000	\$ 6,897

Activity 1.2.2.7: Facilitating the SRI Demplot							Rp 150,000,000	\$ 10,345
SRI Demonstration plots bulid cost		Rp 30,000,000	1	Package	5	Demonstration Plot	Rp 150,000,000	\$ 10,345
Activity 1.2.2.8: Facilitate the construction of environmentally friendly local nursery huts							Rp 400,000,000	\$ 27,586
Building costs		Rp 50,000,000	1	Package	8	Nursery	Rp 400,000,000	\$ 27,586
Activity 1.2.2.9: Facilitation of Agricultural Insurance							Rp 200,000,000	\$ 13,793
Insurance costs		Rp 20,000,000	1	Package	10	Time	Rp 200,000,000	\$ 13,793
Activity 1.2.2.10: Facilitation of appropriate and environmentally friendly production equipment							Rp 750,000,000	\$ 51,724
The cost of procuring production equipment		Rp 75,000,000	1	Package	10	Time	Rp 750,000,000	\$ 51,724
Activity 1.2.2.11: Facilitation of Food Disversion Product Production Houses							Rp 600,000,000	\$ 41,379
Cost of making a production house		Rp 60,000,000	1	Package	10	Time	Rp 600,000,000	\$ 41,379
Activity 1.2.2.12: Facilitation of materials & equipment for packaging local food products							Rp 800,000,000	\$ 55,172
Procurement costs		Rp 80,000,000	1	Package	10	Time	Rp 800,000,000	\$ 55,172
Activity 1.2.2.13. Facilitation of making integrated planting calendar applications							Rp 150,000,000	\$ 10,345
The cost of creating an integrated planting calendar application		Rp 150,000,000	1	Application	1	time	Rp 150,000,000	\$ 10,345
Output 1.2.3: Strengthening market systems for food products that are environmentally friendly							Rp 977,250,000	\$ 67,397
Activity 1.2.3.1: Supply chain management study							Rp 96,000,000	\$ 6,621
Honor Survey Team		Rp 2,000,000	3	Person	10	Day	Rp 60,000,000	\$ 4,138
Honor Study Result Analysis Team		Rp 3,000,000	2	Person	6	Day	Rp 36,000,000	\$ 2,483

Activity 1.2.3.2: Facilitate the preparation of business models for each MSME product							Rp 161,500,000	\$ 11,138
Honor Drafting Team/Fee		Rp 10,000,000	2	Person	5	Time	Rp 100,000,000	\$ 6,897
Honor Reviewer		Rp 12,000,000	1	Person	5	Time	Rp 60,000,000	\$ 4,138
Consumption	Makan siang+Snack	Rp 50,000	3	Person	10	Time	Rp 1,500,000	\$ 103
Activity 1.2.3.3: Facilitate the preparation of the Management of Operations (MoP)							Rp 161,500,000	\$ 11,138
Honor Drafting Team/Fee		Rp 10,000,000	2	Person	5	Time	Rp 100,000,000	\$ 6,897
Honor Reviewer		Rp 12,000,000	1	Person	5	Time	Rp 60,000,000	\$ 4,138
Consumption	Makan siang+Snack	Rp 50,000	3	Person	10	Time	Rp 1,500,000	\$ 103
Activity 1.2.3.4: Multistakeholder meetings internalize the market system into village programs.							Rp 112,500,000	\$ 7,759
Consumption + Snack		Rp 55,000	50	Person	10	Time	Rp 27,500,000	\$ 1,897
Local Participant Transport		Rp 150,000	50	Person	10	Time	Rp 75,000,000	\$ 5,172
Building cleaning costs		Rp 1,000,000	1	Package	10	Time	Rp 10,000,000	\$ 690
Activity 1.2.3.5: Facilitate licensing of community MSME products							Rp 125,000,000	\$ 8,621
License preparation fees		Rp 25,000,000	1	Package	5	Time	Rp 125,000,000	\$ 8,621
Activity 1.2.3.6: Facilitate the making of community product offer documents with potential buyers.							Rp 40,000,000	\$ 2,759
Compilation fees		Rp 20,000,000	1	Package	2	Time	Rp 40,000,000	\$ 2,759
Activity 1.2.3.7: Facilitation of product promotion (online & offline)							Rp 50,000,000	\$ 3,448
Facilitation costs		Rp 10,000,000	1	Package	5	Time	Rp 50,000,000	\$ 3,448
Activity 1.2.3.8: Facilitate the creation of outlets							Rp 200,000,000	\$ 13,793
Outlet build costs		Rp 200,000,000	1	Package	1	Time	Rp 200,000,000	\$ 13,793

Activity 1.2.3.9: Facilitation of MSME meetings with financial institutions through innovative financing schemes.							Rp	30,750,000	\$ 2,121	
Consumption		Rp	55,000	50	Person	3	Time	Rp	8,250,000	\$ 569
Local Participant Transport		Rp	150,000	50	Person	3	Time	Rp	22,500,000	\$ 1,552
Component 2: Strengthening of regional planning and policy towards adaptation measures to climate change in the karstic ecosystem								Rp	1,604,000,000	\$ 110,621
Outcome 2.1 The internalization of climate change adaptation actions through planning documents and policies to adapt to climate change.								Rp	1,604,000,000	\$ 110,621
Output 2.1.1: The internalization of adaptation actions to climate change towards regional policies.								Rp	809,500,000	\$ 55,828
Activity 2.1.1.1: Workshop initiates the formation of the API Working Group							Rp	70,250,000	\$ 4,845	
Full Board Meeting		Rp	450,000	100	Person	1	Time	Rp	45,000,000	\$ 3,103
Local Transport for Participants		Rp	150,000	100	Person	1	Time	Rp	15,000,000	\$ 1,034
Local Transport for speakers		Rp	150,000	3	Person	1	Time	Rp	450,000	\$ 31
Perdiem for the team/committee	Perdiem for Fullday	Rp	150,000	2	Person	1	Time	Rp	300,000	\$ 21
Fee for speakers		Rp	1,500,000	3	Person	1	Time	Rp	4,500,000	\$ 310
Workshop Kit	Consisting of pens, notebooks, goodie bags	Rp	50,000	100	Person	1	Package	Rp	5,000,000	\$ 345
Activity 2.1.1.2: Facilitate the API Working Group Routine Meeting							Rp	61,500,000	\$ 4,241	
Consumption + Snack		Rp	55,000	50	Person	6	Time	Rp	16,500,000	\$ 1,138
Local Participant Transport		Rp	150,000	50	Person	6	Time	Rp	45,000,000	\$ 3,103
Activity 2.1.1.3: Workshop The role of regional development in climate change adaptation							Rp	70,250,000	\$ 4,845	
Full Board Meeting		Rp	450,000	100	Person	1	Time	Rp	45,000,000	\$ 3,103
Local Transport for Participants		Rp	150,000	100	Person	1	Time	Rp	15,000,000	\$ 1,034
Local Transport for speakers		Rp	150,000	3	Person	1	Time	Rp	450,000	\$ 31
Perdiem for the team/committee	Perdiem for Fullday	Rp	150,000	2	Person	1	Time	Rp	300,000	\$ 21
Fee for speakers		Rp	1,500,000	3	Person	1	Time	Rp	4,500,000	\$ 310

Workshop Kit	Consisting of pens, notebooks, goodie bags	Rp 50,000	100	Person	1	Package	Rp 5,000,000	\$ 345
Activity 2.1.1.4: Study of Low Carbon Regional Development within the framework of climate change adaptation							Rp 320,000,000	\$ 22,069
Implementation cost		Rp 320,000,000	1	Package	1	Time	Rp 320,000,000	\$ 22,069
Activity 2.1.1.5: Preparation of Monitoring Plans for Parties in strengthening the climate change adaptation framework							Rp 100,000,000	\$ 6,897
Compilation fees		Rp 100,000,000	1	Package	1	Time	Rp 100,000,000	\$ 6,897
Activity 2.1.1.6: Facilitation of Review of Regional Planning Documents to strengthen the climate change adaptation framework							Rp 85,000,000	\$ 5,862
Facilitation Costs		Rp 85,000,000	1	Package	1	Time	Rp 85,000,000	\$ 5,862
Activity 2.1.1.7: Meeting internalisation of climate change adaptation at the village level							Rp 102,500,000	\$ 7,069
Consumption + Snack		Rp 55,000	50	Person	10	Time	Rp 27,500,000	\$ 1,897
Local Participant Transport		Rp 150,000	50	Person	10	Time	Rp 75,000,000	\$ 5,172
Output 2.1.2: The existence of the RAD API and the Roadmap of adaptation to climate change in the karst ecosystem							Rp 794,500,000	\$ 54,793
Activity 2.1.2.1. Study and Preparation of the South Sulawesi API RAD							Rp 570,000,000	\$ 39,310
Study cost		Rp 570,000,000	1	Package	1	Time	Rp 570,000,000	\$ 39,310
Activity 2.1.2.2: Compilation of Road Map APIs in the Karst ecosystem							Rp 84,000,000	\$ 5,793
Honor Drafting Team/Fee		Rp 1,000,000	2	Person	30	Day	Rp 60,000,000	\$ 4,138
Honor Reviewer		Rp 1,500,000	1	Person	15	Day	Rp 22,500,000	\$ 1,552
Consumption	Lunch + Snack	Rp 50,000	3	Person	10	Time	Rp 1,500,000	\$ 103
Activity 2.1.2.3: South Sulawesi RAD API Consultation Workshop							Rp 70,250,000	\$ 4,845
Full Board Meeting		Rp 450,000	100	Person	1	Time	Rp 45,000,000	\$ 3,103
Local Transport for Participants		Rp 150,000	100	Person	1	Time	Rp 15,000,000	\$ 1,034

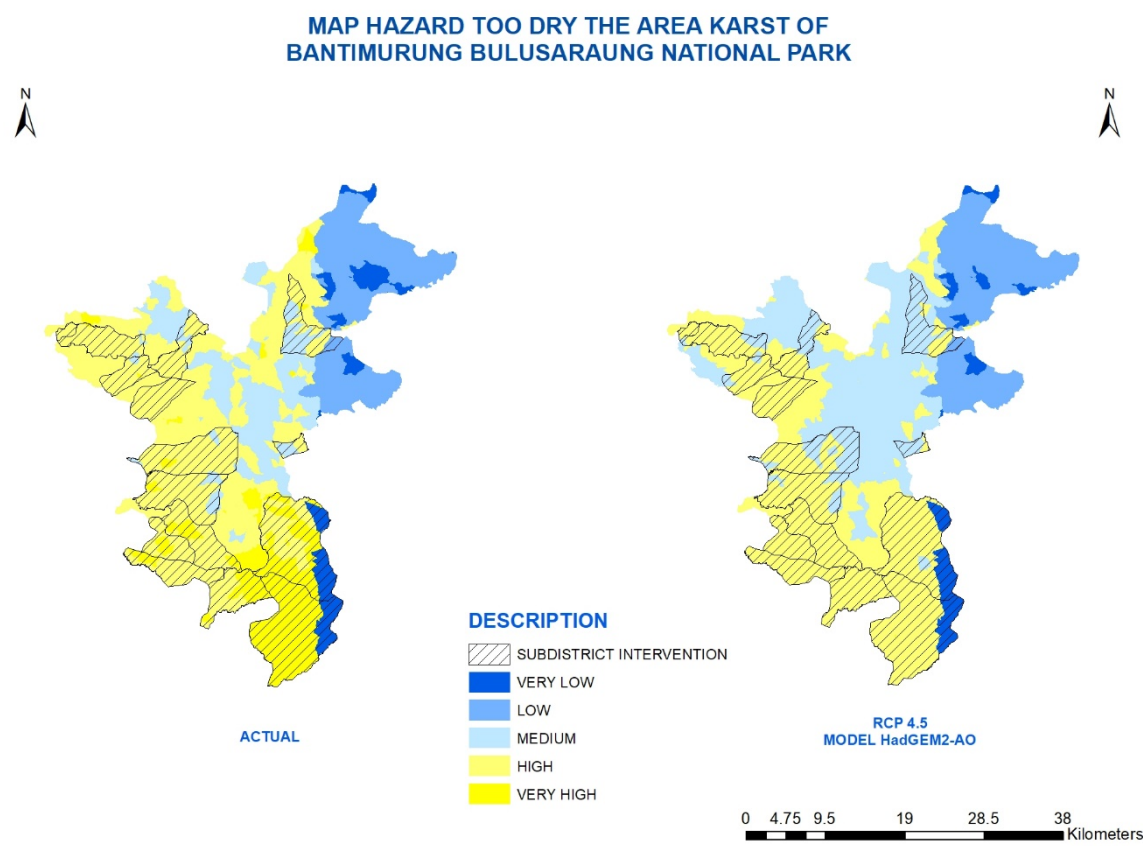
Local Transport for speakers		Rp 150,000	3	Person	1	Time	Rp 450,000	\$ 31
Perdiem for the team/committee	Perdiem for Fullday	Rp 150,000	2	Person	1	Time	Rp 300,000	\$ 21
Fee for speakers		Rp 1,500,000	3	Person	1	Time	Rp 4,500,000	\$ 310
Workshop Kit	Consisting of pens, notebooks, goodie bags	Rp 50,000	100	Person	1	Package	Rp 5,000,000	\$ 345
Activity 2.1.2.4: Workshop of RAD API South Sulawesi							Rp 70,250,000	\$ 4,845
Full Board Meeting		Rp 450,000	100	Person	1	Time	Rp 45,000,000	\$ 3,103
Local Transport for Participants		Rp 150,000	100	Person	1	Time	Rp 15,000,000	\$ 1,034
Local Transport for speakers		Rp 150,000	3	Person	1	Time	Rp 450,000	\$ 31
Perdiem for the team/committee	Perdiem for Fullday	Rp 150,000	2	Person	1	Time	Rp 300,000	\$ 21
Fee for speakers		Rp 1,500,000	3	Person	1	Time	Rp 4,500,000	\$ 310
Workshop Kit	Consisting of pens, notebooks, goodie bags	Rp 50,000	100	Person	1	Package	Rp 5,000,000	\$ 345
Component 3: Strengthening information systems from the knowledge management and learning of climate change adaptation programs by the parties							Rp 963,400,000	\$ 66,441
Outcome 3.1 Knowledge management and learning about climate change adaptation programs by the parties.							Rp 963,400,000	\$ 66,441
Output 3.1.1: The Adaptation to Climate Change Program in the Karst Ecosystem was concluded.							Rp 963,400,000	\$ 66,441
Activity 3.1.1.1: Establishment of Steady Police							Rp 122,250,000	\$ 8,431
Honor Drafting Team/Fee		Rp 1,000,000	2	Person	30	Person	Rp 60,000,000	\$ 4,138
Honor Reviewer		Rp 1,500,000	1	Person	20	Person	Rp 30,000,000	\$ 2,069
Consumption	Lunch + Snack	Rp 50,000	3	Person	15	Person	Rp 2,250,000	\$ 155
Printing cost		Rp 60,000	500	Eksamplar	1	Eksamplar	Rp 30,000,000	\$ 2,069
Activity 3.1.1.2: Book creation: success story, and							Rp 261,950,000	\$ 18,066
Sub activity 3.1.1.2.1: Preparatory Meeting (Team Formation and Content / Material Content Discussion)	Team formation and discussion of content (material)						Rp 5,400,000	\$ 372

Fullday Meeting		Rp 250,000	10	Person	1	Person	Rp 2,500,000	\$ 172
Local Participant Transport		Rp 200,000	10	Person	1	Person	Rp 2,000,000	\$ 138
Perdiem Participants		Rp 90,000	10	Person	1	Person	Rp 900,000	\$ 62
Sub activity 3.1.1.2.2: Book Compilation							Rp 83,250,000	\$ 5,741
Honor Writer		Rp 1,000,000	2	Person	30	Person	Rp 60,000,000	\$ 4,138
Honor Reviewer		Rp 1,500,000	1	Person	15	Person	Rp 22,500,000	\$ 1,552
Consumption	Lunch + Snack	Rp 50,000	3	Person	5	Person	Rp 750,000	\$ 52
Sub activity 3.1.1.2.3: Book Printing	Printing of 200 copies of books and 200 copies of journals						Rp 132,100,000	\$ 9,110
Book Printing cost		Rp 180,000	500	Eksamplar	1	Eksamplar	Rp 90,000,000	\$ 6,207
Journal Printing costs		Rp 70,000	500	Eksamplar	1	Eksamplar	Rp 35,000,000	\$ 2,414
Distribution costs		Rp 7,100,000	1	Package	1	Package	Rp 7,100,000	\$ 490
Sub acitvty 3.1.1.2.4: Launching Books	Held in Makassar and attended by 75 participants						Rp 41,200,000	\$ 2,841
Fullday Meeting		Rp 250,000	75	Person	1	Person	Rp 18,750,000	\$ 1,293
Local Participant Transport		Rp 200,000	75	Person	1	Person	Rp 15,000,000	\$ 1,034
Perdiem Participants		Rp 90,000	75	Person	1	Person	Rp 6,750,000	\$ 466
Tim's local transport		Rp 200,000	2	Person	1	Person	Rp 400,000	\$ 28
Perdiem Team		Rp 150,000	2	Person	1	Person	Rp 300,000	\$ 21
Activity 3.1.1.3: Making Program Infographics							Rp 90,000,000	\$ 6,207
Cost of making		Rp 15,000,000	1	Package	6	Package	Rp 90,000,000	\$ 6,207
Activity 3.1.1.4: Making and Operationalizing a Program Website							Rp 85,000,000	\$ 5,862
Cost of making		Rp 85,000,000	1	Package	1	Package	Rp 85,000,000	\$ 5,862
Activity 3.1.1.5: Study of the impact of the program on the condition of the landscape and social landscape							Rp 150,000,000	\$ 10,345
Costs for conducting studies		Rp 150,000,000	1	Package	1	Package	Rp 150,000,000	\$ 10,345

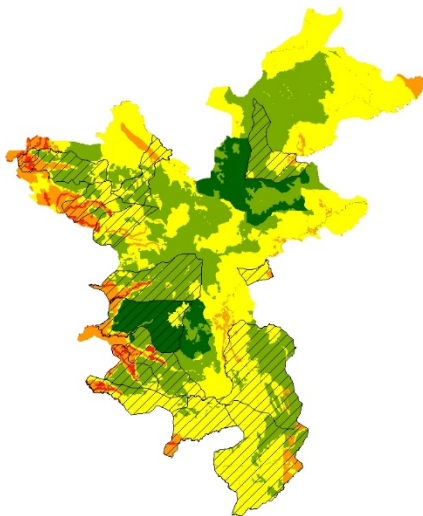
Activity 3.1.1.6: Making short films and documentaries							Rp 111,200,000	\$ 7,669
Honor Film Maker		Rp 70,000,000	1	Team	1	Team	Rp 70,000,000	\$ 4,828
Sub activity 3.1.1.6.1: Launching Film							Rp 41,200,000	\$ 2,841
Fullday Meeting		Rp 250,000	75	Person	1	Person	Rp 18,750,000	\$ 1,293
Local Participant Transport		Rp 200,000	75	Person	1	Person	Rp 15,000,000	\$ 1,034
Perdiem Participants		Rp 90,000	75	Person	1	Person	Rp 6,750,000	\$ 466
Tim's local transport		Rp 200,000	2	Person	1	Person	Rp 400,000	\$ 28
Perdiem Team		Rp 150,000	2	Person	1	Person	Rp 300,000	\$ 21
Activity 3.1.1.7: Supervision Monitoring and Evaluation		Rp 143,000,000	1	Package	1	Package	Rp 143,000,000	\$ 11,000
Component 4: coordination with national implementing entity								\$ 10,000
Total Implementing Cost							Rp 12,537,700,000	\$ 874,669
Program Excecution Cost								
Monev Specialist		Rp 3,000,000	1	Person	18	month	Rp 63,000,000	\$ 4,344
Conservation specialist		Rp 3,000,000	1	Person	18	month	Rp 63,000,000	\$ 4,334
Gender Specialist		Rp 3,000,000	1	Person	18	month	Rp 63,000,000	\$ 4,334
Social and economic spesialist		Rp 3,000,000	1	Person	18	month	Rp 63,000,000	\$ 4,334
Project PIC		Rp 6,000,000	1	Person	18	month	Rp 108,000,000	\$ 7,448
Project Manager		Rp 10,000,000	1	Person	18	month	Rp 180,000,000	\$ 12,414
Finance Manager		Rp 5,000,000	1	Person	18	month	Rp 90,000,000	\$ 6,207
Assiten Finance Manager		Rp 4,000,000	1	Person	18	month	Rp 72,000,000	\$ 4,966
Program Officer		Rp 6,500,000	3	Person	18	month	Rp 351,000,000	\$ 24,207
Office boy		Rp 1,000,000	2	Person	18	month	Rp 36,000,000	\$ 2,483
Office Rent		Rp 1,300,000	2	Unit	18	month	Rp 46,800,000	\$ 3,228
Stationary		Rp 6,353,120	1	Paket	1	Once	Rp 12,353,120	\$ 851
Communication		Rp 2,700,000	1	Paket	1	Once	Rp 3,177,000	\$ 219
Electricity, WIFI, Water		Rp 1,500,000	1	Paket	18	month	Rp 27,000,000	\$ 1,862
Audit Program		Rp 50,000,000	1	Paket	1	Once	Rp 50,000,000	\$ 10,344
Total Project/Program Excecution Cost							Rp 1,188,853,120	\$ 91,816

Project/Programme Cycle Management Fee charged by the Implementing Entity		
Total Project/Programme Cycle Management Fee charged by the Implementing Entity		\$ 82,151
Grand Total Project Cost		\$ 1,048,636

ANNEX 5: MAPS









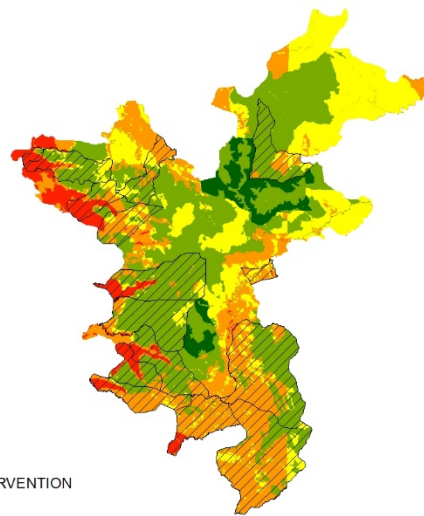
MAP PRONE TO FLOODINGTHE AREA KARST OF BANTIMURUNG BULUSARAUNG NATIONAL PARK



ACTUAL

DESCRIPTION

-  SUBDISTRICT INTERVENTION
-  VERY LOW
-  LOW
-  MEDIUM
-  HIGH
-  VERY HIGH



RCP 4.5
MODEL HadGEM2-AO

0 4.75 9.5 19 28.5 38 Kilometers

ANNEX 6: ALIGNMENT WITH ADAPTATION FUND RESULT FRAMEWORK

Project Objective(s) ¹⁷	Project Objective Indicator(s)	Fund Outcome	Fund Outcome Indicator	Grant Amount (USD)
1. Increased accessible food security in the sustenance adaptation of the impact of climate change in the karst ecosystem	15 schemes / programs that are being implemented to improve food security as a way to adapt life.	Outcome 6. Diversification and strengthening of livelihoods and sources of income for vulnerable people in specific areas Outcome 3. Greater awareness and ownership of the processes of climate risk reduction at the local level	6.1 Percentage of communities that have more secure (higher) access to subsistence assets 6.2. Percentage of target population with sustainable livelihoods resistant to climate 3.1. Percentage of the target population aware of expected adverse impacts of climate change, and of appropriate answers	\$ 687,607
2. Strengthening of regional planning and policy towards adaptation measures to climate change in the karstic ecosystem	3 product planning and local government policies that internalize adaptation to climate change	Outcome 7. Improved policies and regulations that promote and enforce resilience measures	7. Climate change priorities are integrated into national development strategy	\$ 110,621
3. Strengthening information systems from the knowledge management and learning of climate change adaptation programs by the parties	6 knowledge management products that increase awareness and the importance of adapting to climate change	Outcome 3. Strengthened awareness and ownership of adaptation and climate risk reduction processes at local level	3.1. Percentage of targeted population aware of predicted adverse impacts of climate change, and of appropriate responses	\$ 66,441
Project Outcome(s)	Project Outcome Indicator(s)	Fund Output	Fund Output Indicator	Grant Amount (USD)
Outcome 1.1. Increased capacity and partisanship of the parties to overcome climate change and sustainable development with low carbon in the Karst ecosystem	15 villages are aware of the effects of climate change and participate in programs to adapt to climate change.	Outcome 3. Strengthened awareness and ownership of adaptation and climate risk reduction processes at local level	3.1. Percentage of targeted population aware of predicted adverse impacts of climate change, and of appropriate responses 3.2. Modification in behavior of targeted population	\$103,338
Outcome 1.2 Accessed several schemes / programs	15 schemes / programs to develop environmentally	Output 6: Targeted individual and community	6.1.1. No. and type of adaptation assets (tangible and	\$ 584,269

that could develop food products that are environmentally friendly and low carbon by the community around the karst ecosystem.	friendly and low carbon food products	livelihood strategies strengthened in relation to climate change impacts, including variability	intangible) created or strengthened in support of individual or community livelihood strategies 6.2.1. Type of income sources for households generated under climate change scenario	
Outcome 2.1 The internalization of climate change adaptation actions through planning documents and policies to adapt to climate change.	3 regional planning and policy products that promote actions to adapt to climate change.	Output 7: Improved integration of climate-resilience strategies into country development plans	7.1. No. of policies introduced or adjusted to address climate change risks (by sector)	\$ 110,621
Outcome 3.1 Knowledge management and learning about climate change adaptation programs by the parties.	6 knowledge management products are shared learning with the parties.	Output 3: Targeted population groups participating in adaptation and risk reduction awareness activities	3.1.2 No. of news outlets in the local press and media that have covered the topic	\$ 66,441

ANNEX 7: ENVIRONMENTAL AND SOCIAL MANAGEMENT PLAN (ESMP)

1. INTRODUCTION

Overall this project aims to improve the adaptation efforts of the people in the world's largest karst ecosystem that is part of the climate change adaptation efforts that focus on:

- 1.1. Strengthening accessibility of food security through livelihood adaptation to the effects of climate change in the karst ecosystem;
- 1.2. Strengthening regional planning and policy towards climate change adaptation actions in the karst ecosystem;
- 1.3. Management of knowledge and dissemination of actions for climate change adaptation in the karst ecosystem.

2. PROJECT DESCRIPTION

The scope of project activities is related to capacity building, encouraging policies and increasing food security in the Karst area of Bantimurung Bulusaraung National Park.

3. PROJECT COMPONENT

Project/Programme Components	Expected Concrete Outputs	Expected Outcomes
1. Increased accessible food security in the sustenance adaptation of the impact of climate change in the karst ecosystem	1.1.1. Greater capacity of the parties to overcome climate change and low sustainable development.	1.1 Increased capacity and partisanship of the parties to overcome climate change and sustainable development with low carbon in the Karst ecosystem
	1.1.2. The growing partisanship of the parties in overcoming climate change and low carbon sustainable development.	
	1.2.1. The existence of a Social Forestry scheme that embodies forest food security around the Karst Ecosystem.	1.3. Accessed several schemes/ programs that could develop environmentally friendly and low-carbon food products by the community around the karst ecosystem.
	1.2.2. Higher quality, quantity, added value and certainty of agricultural products.	
	1.2.3. Strengthening market systems for food products that are environmentally friendly	

2. Strengthening of regional planning and policy towards adaptation measures to climate change in the karstic ecosystem	2.1.1. The internalization of climate change adaptation actions towards regional policies 2.1.2. The existence of the RAD API and Roadmap of adaptation to climate change in the karst ecosystem	2.1 The internalization of climate change adaptation actions through planning documents and policies to adapt to climate
3. Strengthening information systems from the knowledge management and learning of climate change adaptation programs by the parties	3.1.1. The Climate Change Adaptation Program in the Karst Ecosystem was concluded	3.1. Knowledge management and learning about climate change adaptation programs by the parties

1. ENVIRONMENTAL & SOCIAL RISK SCREENING AND MANAGEMENT

a. Compliance with the Law

This project complies with applicable laws such as: Perdirjen KSDAE No. 12 of 2015 concerning Guidelines for Procedures for Planting and Enriching Types in the Framework of Restoration of Mainland Ecosystems in Natural Reserve Areas and Nature Conservation Areas, Regulation of the Minister of Environment and Forestry No. 7 of 2018, Technical Guidelines for Preparing Action Plans for the Sustainable Development Goals of the Ministry of National Development Planning / Bappenas in 2017, LHK Ministerial Regulation No.33 of 2016 concerning Guidelines for Preparing Climate Change Adaptation Actions, regulation P.83 of 2016 concerning Social Forestry, appropriate conservation partnership technical guidelines Regulation of Perdirjen No. 6 of 2018, Perdirjen No. 89 of 2018 concerning Guidelines for the Development of Forest Farmers' Groups.

b. Access and Equity

By design, this project will ensure fair and equitable access to all beneficiaries. The project has been designed in such a way that it will not hinder the access of any group to services and important rights mentioned in the principle so it does not require further measurement and assessment of compliance. This project also does not exacerbate existing injustices, especially those relating to marginalized and vulnerable groups.

c. Marginalized and Vulnerable Groups

This project will involve the majority of beneficiaries from marginalized and vulnerable groups. The assessment of vulnerable groups that will be involved in the project is identified by several categories such as age, employment, income, and family dependents. The classification data will then be chosen fairly for group involvement in each project activity. This activity will also ensure that children and parents will not be involved in any training program activities which will then be included in periodic monitoring and evaluation

Management :

The impact of the project on marginalized and vulnerable segments was assessed and it was observed that this project would open up new livelihood opportunities and ensure an increase in their income and welfare. This project uses the community's participatory approach actively and sustainably. This project is also planned to provide capacity benefits by involving them in the process.

The process of selecting beneficiaries is intended to address the problem of marginalized and vulnerable groups. The consultation process begins with the PRA (Participatory Rural Appraisal) method by involving representation from marginalized and vulnerable groups such as women and (30%), farmers who do not own land / have a land area of less than 2 ha (70%)

d. Human Rights

This project must respect and if possible promote international human rights. Human rights promotion in projects / programs will be achieved by creating awareness with all people involved in all activities, including design, implementation, monitoring and evaluation, related to the Universal Declaration of Human Rights as the overall principle of the project.

This project does not affect the lives and freedoms of any individual or group. The project also does not discriminate against certain communities or groups or people for reasons of gender, caste, ethnicity, or ability. This project upholds fulfillment of human rights in intervention villages and target groups. So that it can be said that it does not require further assessment of compliance.

e. Gender Equity and Woman's Empowerment

This project is designed so that woman and men have equal opportunities to participate in accordance with gender policy and receive comparable social and economic benefits. The project will actively involve equal participation in project / program activities and stakeholder consultation. The project also ensures that positions in the program are accessed effectively by men and women fairly, and that women are encouraged to implement and take positions, basically, the design and implementation of projects / programs will ensure equal access for men and women. women as beneficiaries.

Management :

Gender involvement is assessed / measured through the proportion of work in the household so that it can support their livelihoods. Activities related to beneficiaries, for examples training and capacity building through local gender training activities in disasters, involving 30% of women as beneficiaries. Planned interventions will have a positive impact on women's empowerment and will ensure gender equality because of certain livelihoods.

The principle of gender equality and women's empowerment in project activities is designed using the (Gender Integrated Plan) as a safeguard that looks at as much as possible the proportion of involvement between men and women in all project activities.

f. Core Labour Rights

This project / program meets core labor standards as identified by the International Labor Organization. ILO core labor standards. The core ILO labor standards are listed in the Declaration of the Principles of LO and Fundamental Rights in 1998. The Declaration covers four basic principles and rights, which were further developed in eight human rights conventions:

- Freedom of association and protecting the right to organize and collective bargaining conventions (ILO conventions 87 and 98);
- Elimination of forced labor conventions (ILO conventions 29 and 105)
- The worst forms of child labor conventions (ILO Conventions 138 and 182);
- Discrimination Conventions (work and employment) (ILO Conventions 100 and 111).
- The project / program will combine ILO core labor standards in the design and implementation of projects / programs and create awareness with all involved about how the standards are implemented.

Labor rights in the context of the project include: employment and compliance with payment of minimum wages and time; working hours and their time based on season; rest and work place facilities; participation in planning; avoidance of child labor; and the complaints & recovery system.

This project will work within the applicable labor law framework. Note the work carried out for each workforce involved will be maintained and the wages will be paid. Working hours and work hours will be determined in consultation with workers and practitioners in the area. Positive discrimination that benefits women will be used to provide justice and equality of opportunity for women who seek employment as workers and benefit from the wages received. All forms of negative discrimination relating to work will be eliminated. The project will not involve child labor in any activity and all forms of forced or compulsory labor will be eliminated.

In essence, all activity activities are not related to violations of workers' core rights

g. Indigenous Peoples

This project is not related to Indigenous Peoples or Indigenous Peoples' Rights and other international instruments that apply to indigenous peoples. This project also does not involve indigenous peoples in project design and implementation

So, basically does not require further assessment of compliance.

h. Involuntary Resettlement

This project is not related to resettlement or relocation activities / activities or loss of residence and / or economic movement (loss of assets or access to assets resulting in loss of income or other subsistence methods). So that no further assessment of compliance is needed.

i. Protection of Natural Habitats

Objectively, the project views livelihood adaptation activities Ecoenterprise in Karst Ecosystem as an integral part of restoration and promotion of natural habitats as a form of strategy for greater resilience and adaptive capacity in the future. So that no further assessment of compliance is needed.

j. Conservation of Biological Diversity

This project is not related to biodiversity conservation activities or relationships that have an impact on the degradation of habitat around the KARST ecosystem area, including those protected by law so, it does not require further assessment of compliance.

k. Climate Change

Basically, this project to increase the adaptive capacity of people living around Bantimurung Bulusaraung National Park and the KARST Ecosystem to fulfill their livelihoods against the negative impacts of climate change and not significantly contribute to a significant increase in GHG emissions or other climate change. So, no further assessment is needed for compliance.

l. Pollution Prevention and Resources Efficiency

There are not proposed adaptation activities have an impact on increasing pollutants. The use of material resources is also limited, for example in the construction of nursery houses, of course using polybags made from plastic, but not in large quantities.

Nonetheless, the project has been designed in such a way as to develop a plastic waste disposal mechanism that is included as part of the project strategy.

m. Public Health

The project is not focus on activities related to efforts to avoid significant negative impacts on public health, access to medical care and health facilities, so it does not require further compliance assessments.

n. Physical and Cultural Heritage

The project is also not concerned with efforts to change, destroy or erase physical cultural resources, cultural sites and locations with unique traits such as at the community, national or international level which are World Cultural Heritage, so that no further assessment of compliance is required.

Because of the project, physical / resource cultural heritage at the community level will not be affected.

o. Lands and Soil Conservation

In the implementation of the project, all activities will not have an impact on soil damage and other activities that can cause land loss and land degradation, so that further compliance assessment is not needed.

2. PUBLIC DISCLOSURE

The project management plan will be disseminated to all stakeholders and the document will be in the public domain to facilitate stakeholder references. Apart from this, the project performance report including the status of implementing environmental and social actions will be available for stakeholder reviews. In addition to implementing entities, the community and other stakeholders will be intimidated about significant changes in the project plan. Monitoring: NIE / Partnership will monitor the processes related to public consultation and disclosure of the ESMP.

3. COMPLAINTS MECHANISM / GRIEVANCE MECHANISM

Complaints arising from stakeholders and the general public involved in the Executing Entity (EE) to be submitted to the Implementing Activities to be discussed together to find a way out. If consensus is not reached, a complaint can be submitted to the National Entity (NE) using the form. Complaints that will be processed with the Complaint Mechanism are only those relating to all project activities. Complaints and complaints information must be submitted in writing via email or letter sent or delivered directly during the visit. Other channels such as text messages / SMS, or oral / telephone complaints can be rejected as official complaints or asked to be distributed in writing. EE and NE must ensure the confidentiality of the complaint. In registering a complaint, the complainant must fill out and attach the Complaint Form. Registered complaints that deserve to be followed up through the Complaint Settlement Plan. The following is an example of a complaint form :

Diisi oleh KARST /Filled by KARST

*) Lingkari yang cocok/*Circle the appropriate*

Data Pelapor/Complainant Data	
Nama/Name	
Alamat/Address	
Nomor Telepon/Phone No.	
Fax	
E-mail	
Informasi Pengaduan/Grievance Information	
Lokasi/Location	
Program/Program	
Pihak yang dilaporkan/ Parties was reported	
Tanggal Kejadian/Date of occurence	
Isi pengaduan/Detail grievance :	

(lengkapi dengan bukti atau dokumen terkait/ <i>Completed with related evidence or documents</i>) (jika bagian ini tidak cukup dapat menggunakan kertas tambahan/ <i>if this part is insufficient, then allowed to use additional paper</i>)		
Nama dan Tanda Tangan Pelapor/ <i>Complainant Name and Signature</i>		Date:
Nama dan Tanda Tangan Penerima Pengaduan/ <i>Receiver name and signature</i>		Date:

Keterangan/*Notes*:

Formulir dibuat rangkap 2 lembar: 1 untuk pelapor dan lembar 2 untuk arsip./*The form must be made 2 copy: 1 copy for complainant, and 1 copy for archives.*

4. MONITORING AND REPORTING

The implementation Schedule of the ESMP will be as follows:

<i>Activities</i>	<i>Time</i>											
	<i>Year 1</i>				<i>Year 2</i>				<i>Year 3</i>			
	<i>Q₁</i>	<i>Q₂</i>	<i>Q₃</i>	<i>Q₄</i>	<i>Q₁</i>	<i>Q₂</i>	<i>Q₃</i>	<i>Q₄</i>	<i>Q₁</i>	<i>Q₂</i>	<i>Q₃</i>	<i>Q₄</i>
Capacity Building of Management Project												
ESMP of Sub Projects												
Monitoring and Reporting of ESMP												
Environmental and Social Audit												

5. COST for ESI SCREENING AND ESMP

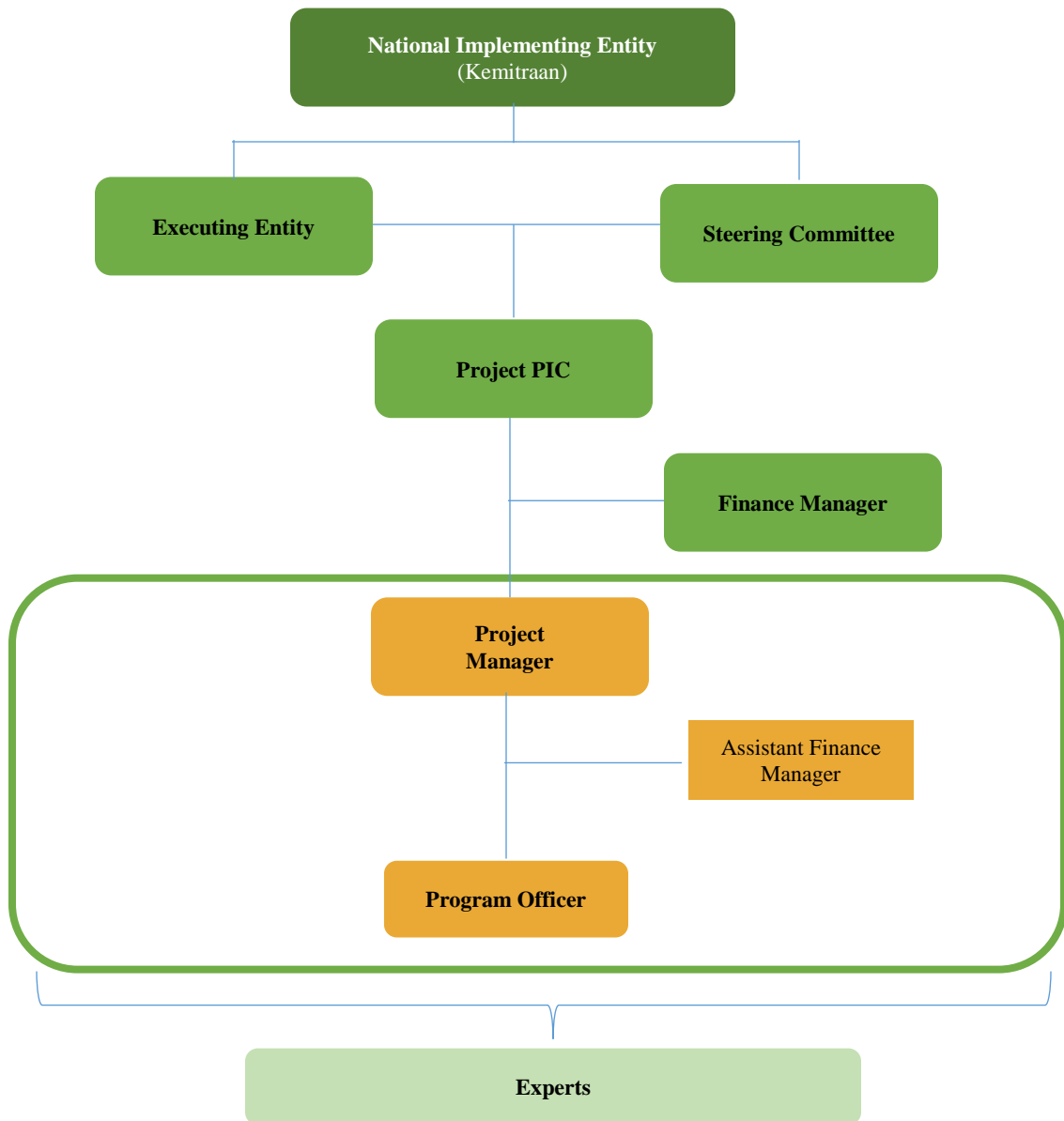
<i>Esi Screening/ESMP Related Activity</i>	<i>Source Cost</i>
Capacity Building for Management Project	Will be absorbed in the Programme Management Cost
ESMP of Sub Projects	Built in the Programme Execution Cost
Monitoring and Reporting of ESMP	Built in the Programme Execution Cost
Environmental and Social Audit	Built in to Project Annual Report

6. Management and Monitoring Plan (ESMP Plan)

The SMPN plan activity is filled in as follows:

1	Activity Component (Source of Impact)	Filled in for each type of ESMP activity	
2	Impact and Risk	Filled with impacts and risks in accordance with 15 principle Environmental and Social Risk	
3	Management Plan and Impact and Risk Monitoring Plan	Management (filled in with the plan / management effort)	Monitoring (filled in with the Monitoring Activity Plan)
		1. 2. 3.	1. 2. 3.
4	Implementation of Management and Monitoring of Impacts and Risks	Management (filled with management efforts that have been carried out to minimize the impact and risk and are complemented by pictures).	Monitoring (filled with monitoring efforts that have been carried out to determine the effectiveness of the impact and risk management and completed with pictures).
		1. 2. 3.	1. 2. 3.
5	Obstacles	Management (filled if the management efforts that have been carried out are not in accordance with the management plan in the ESMP, field conditions, budget constraints, etc.).	Monitoring (filled in if the monitoring efforts carried out are not in accordance with the monitoring plan in the ESMP matrix, field conditions, budget constraints, etc.).
6	Handling Plan	Management (filled in with a plan for handling the management constraints mentioned in point 5).	Monitoring (filled in the plan for handling the monitoring constraints mentioned in point 5).

ANNEX 8: PROJECT IMPLEMENTATION STRUCTURE





GOVERNOR SOUTHERN SULAWESI

SURAT REKOMENDASI

No. 557/RSR/Gub

Yang bertanda tangan di bawah ini:

Nama : Prof. Dr. Ir. H.M. Nurdin Abdullah, M.Agr.,
Jabatan : Gubernur Provinsi Sulawesi Selatan
Instansi : Pemerintah Provinsi Sulawesi Selatan

Memberikan rekomendasi dan dukungan penuh kepada **Konsorsium Adaptasi Ekosistem KARST (KARST)**, sebagai lembaga yang aktif dalam mendorong pengelolaan hutan berkelanjutan, di mana saat ini mengajukan usulan Proposal kepada **Adaptation Fund** dengan judul **"Adaptasi Nafkah di Ekosistem Karst Sebagai Bentuk Adaptasi Terhadap Perubahan Iklim."**

Demikian surat dukungan ini dibuat dan diberikan untuk dipergunakan sebagaimana mestinya.

Makassar, 17 Desember 2018

Gubernur Sulawesi Selatan



Prof. Dr. Ir. H.M. Nurdin Abdullah, M.Agr., IPU



BUPATI PANGKAJENE DAN KEPULAUAN

SURAT REKOMENDASI

No : 503/207/umum

Yang bertanda tangan di bawah ini :

Nama : H. Syamsuddin A. Hamid, S.E
Jabatan : Bupati Pangkajene dan Kepulauan
Instansi : Pemerintahan Kabupaten Pangkajene dan Kepulauan

Memberikan rekomendasi dan dukungan penuh kepada **Konsorsium Adaptasi Ekosistem Karst (KARST)**, sebagai lembaga yang aktif dalam mendorong pengelolaan hutan berkelanjutan di Sulawesi Selatan. Dimana saat ini mengajukan usulan Proposal kepada **Adaptation Fund** dengan judul "**Adaptasi Nafkah Pada Ekosistem Karst Sebagai Bentuk Adaptasi Terhadap Perubahan Iklim**".

Demikian surat rekomendasi ini dibuat dan diberikan untuk dipergunakan sebagaimana mestinya.

Pangkajene, 13 Desember 2018

Bupati Pangkajene dan Kepulauan



H. Syamsuddin A. Hamid, S.E



KEMENTERIAN LINGKUNGAN HIDUP DAN KEHUTANAN
DIREKTORAT JENDERAL KONSERVASI SUMBER DAYA ALAM DAN EKOSISTEM
BALAI TAMAN NASIONAL BANTIMURUNG BULUSARAUNG

Jl. Poros Maros Bone Km. 12 Bantimurung, Maros Sulawesi Selatan 90561
Telp. (0411) 3880252 Fax. (0411) 3880139 E-Mail : tn.babul@gmail.com Website : www.tn-babul.org

SURAT REKOMENDASI

No. S. 789/T.46/TU/PEG/12/2018

Berdasarkan surat Tim Layanan Kehutanan Masyarakat Nomor: 066/B/TLKM/XII/2018 tanggal 9 Desember 2018 perihal permohonan Surat Rekomendasi dengan ini menerangkan bahwa:

Yang bertanda tangan di bawah ini :

Nama : Ir. Yusak Mangetan, M.A.B
Jabatan : Kepala Balai
Instansi : Taman Nasional Bantimurung Bulusaraung

Memberikan rekomendasi dan dukungan penuh kepada **Yayasan Tim Layanan Kehutanan Masyarakat (TLKM)** yang merupakan bagian dari Konsorsium Adaptasi Ekosistem Karst (KARST) dimana saat ini mengajukan Proposal kepada Lembaga donor **Adaption Fund** dengan judul **"Adaptasi Nafkah pada Ekosistem Karst Terbesar"**.

Demikian surat dukungan ini diberikan untuk dipergunakan sebagaimana mestinya.

Bantimurung, 20 Desember 2018
Kepala Balai



Ir. Yusak Mangetan, M.A.B
NIP. 19641224 199203 1 004