



Enhancing Climate Resilience in San Cristóbal province, Dominican Republic Integrated Water Resources Management and Rural Development Programme

Climate change adaptation reasoning to support project development and assessing broader vulnerabilities
Adaptation Fund Webinar 10 - 11 November 2020



Ministerio de
Medio Ambiente
y Recursos Naturales



INAPA


Instituto Nacional
de Aguas Potables
Y Alcantarillados



ADAPTATION FUND

Enhancing Climate Resilience in San Cristóbal Province, Dominican Republic

Integrated Water Resources Management and Rural Development Programme



24,300 beneficiaries,
(12,200 are women), will
improve their resilience
capacity to climate risks




24,300



30

30 rural communities will be served,
and will benefit from the
construction of potable water and
sanitation systems



2722 ha

Reforestation and conservation of
2722 hectares and better
management of water resources.

Objective:

Increase the capacity for resilience,
adaptation and recovery to the impacts of
climate risks on water resources, of rural
communities in the Province of San
Cristóbal

National Implementing Entity



Executing Entities



Component 1:

Community-level implementation of climate resilient Water resource Management activities.

Outcome 1:

Climate resilient water resources management implemented in 30 small rural communities of San Cristóbal Province



Enhancing Climate Resilience in San Cristóbal Province, Dominican Republic

Component 2:

Capacity building and capacity development in key institutions and communities to manage long-term climate change related risks

Outcome 2:

Increased Technical capacity of communities and institutions to assess impacts, vulnerability and Adaptation needs according to their respective competencies



INAPA Instituto Nacional de Aguas Potables y Alcantarillados



Strengthening the capacities of local actors to manage climate-related risks

The challenge



Climate Change is not a new issue, but not everyone is clear about the effects that climate variability is causing or may cause in their communities.

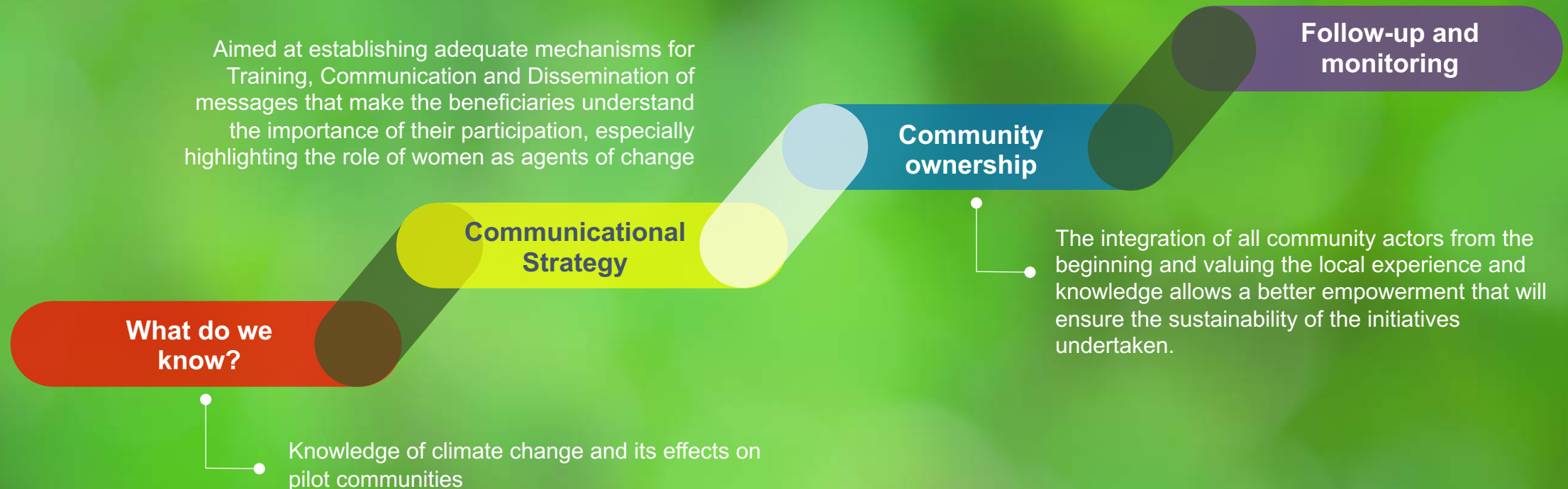
Trying to develop actions, when the beneficiaries or key actors of a community have not internalized the problem or are not considered to provide solutions, the success and sustainability of any initiative will not be as expected.



Process Roadmap

Strengthening the capacities of local key actors to manage climate-related risks

Provincial Climate Change Adaptation Monitoring will allow the exchange between local governments and communities of information for the monitoring of actions that make the population more resilient to the effects of climate change..





Community participation as the axis of transformative actions for adaptation to Climate Change

The Rural Aqueduct Associations (ASOCAR) focus on strengthening capacities to ensure drinking water service and promoting sanitation with community participation, and their objective is to reinforce commercial management and train local technicians who can provide maintenance and service failures in supply, in order to guarantee the sustainability of services.

The National Institute of Drinking Waters and Sewerage (INAPA), participates with its technical staff, supporting the training and supervision of the operation of the ASOCARs at their start-up.

The participation of women as agents of change. Through Asocars, they play a fundamental role in leadership in actions to face climate change and in the management of natural resources.

Adapting to climate change: The need for an integral approach



The sustainability of the actions are based on fostering the promotion of public-private partnerships that achieve a shared benefit between the communities and their key actors.

Through win-win outcomes, EbA protects vulnerable communities from extreme weather while providing a variety of ecological benefits so crucial to human well-being, such as clean water and livelihoods.



“

Climate resilience increases when we learn to live with change and uncertainty and develop strategies to cope with them; when different types of knowledge are combined for learning through participatory management and establishing a governance structure with the participation of the sector public, private and communities

”

The extra mile

The infrastructure works for the drinking water systems that will be developed for the benefit of communities and the measures for the conservation and protection of the middle and lower basins of the Yubaso, Haina Nizao and Nigua rivers will be a contribution not only for the Province of San Cristóbal, but for the communities of Greater Santo Domingo that will be able to benefit from the preservation and care of the water sources that feed the Haina - Manoguayabo system, which contributes about 30% of the water served by the Santo Domingo aqueduct, expanding the number of project beneficiaries.



A large, serrated leaf with a mix of green and yellow hues. A central portion of the leaf has been cut out, revealing a white background. The cutout depicts a landscape with several industrial buildings and tall smokestacks emitting thick, dark smoke that drifts across the sky. The leaf's veins are clearly visible, and its edges are slightly jagged.

"Resilience is the ability of human beings to face the adversities of life, overcome them and be positively transformed by them."