



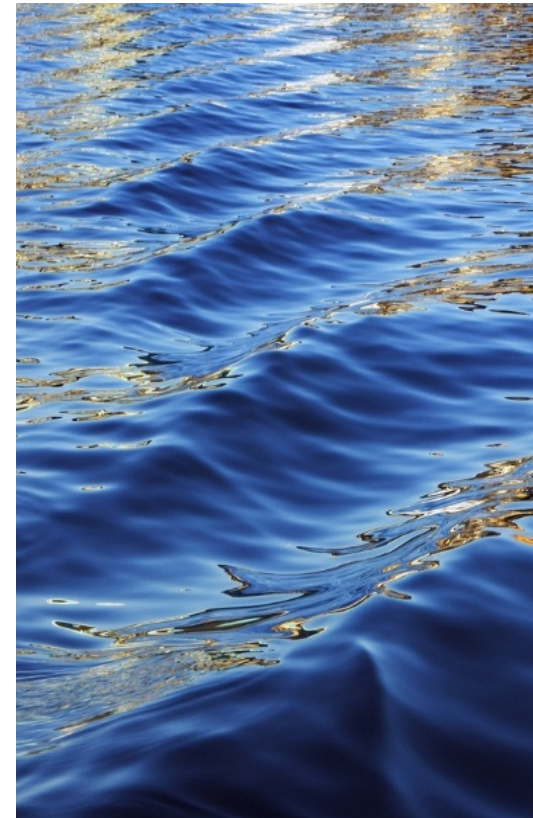
ADAPTATION FUND

2021 Annual NIE Seminar

WINDOW ON ENHANCED
DIRECT ACCESS (EDA)

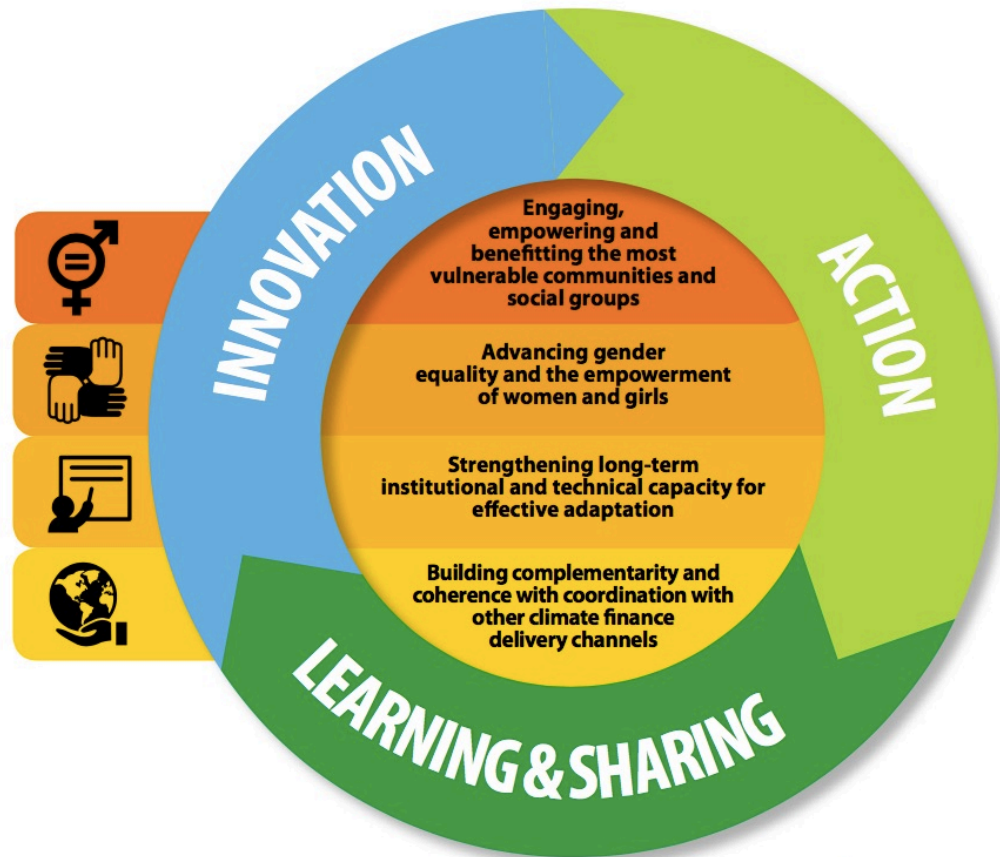
3-5 August 2021

Presented by Farayi Madziwa.
Readiness Programme Coordinator



Background

- ❖ **MTS 2018 – 2022: under ACTION Pillar, ER1**
 - identifies Funding “Enhanced Direct Access” through dedicated window
- ❖ **AFB Decision B.35.b/10 approved EDA window (pilot):**
 - To further promote locally led adaptation under AF
 - Available to NIEs only
 - Grant up to a max of US\$5 million per country
 - EDA will not count against country cap



- Execution costs up to 12% of the total project/programme budget before IE fees
- IE fees max 10% of total project costs

Purpose of EDA

- ❖ To empower developing country recipients of international climate finance beyond what can be achieved through the Direct Access modality alone.
- ❖ Expected that EDA will offer opportunities that help build the capacity of local organizations to programme adaptation finance and design and implement their own projects through locally led action



Enhanced Direct Access Defined

What is Enhanced Direct Access (EDA)?

- ❖ When decision-making on the programming of internationally allocated funds is devolved to the national and sub-national levels.
- ❖ This means:
 - Screening, review and selection of projects would be done at the national and sub-national level
 - Processes done with stronger stakeholder engagement in the decision-making on proposed resilience initiatives.
- ❖ Under AF EDA programming done through NIEs as per Fund's definition of Direct Access

GCF characterizes EDA as:

- ❖ an enhanced devolution of decision making whereby both funding decisions and project oversight take place at the national or regional level

EDA proposal submission process

Procedure for proposal submission:

- ❖ Proposal preparation and submission follows existing process for regular projects/programmes for single country projects/programmes (1-step or 2-Step)
- ❖ Existing monitoring and reporting mechanisms apply
- ❖ Proposals must be submitted using the existing approved proposal template



EDA proposal submission process

Procedure for proposal submission:

- ❖ Existing guideline materials for regular concrete projects/programmes apply (Instructions for Preparing a Request for Project/Programme Funding)
- ❖ Note the limit for execution costs and management fees for EDA projects/programmes (12% and 10% respectively and at 1.5% in line with OPG for cases where the IE has also taken on the role of EE).
- ❖ Readiness and preparatory support available to assist with proposal development. EDA projects eligible for existing PFA and PFG grants

EDA proposal review process

Eligibility

- must have an accreditation status of “Accredited”

Proposal review process

- Follow's Fund's regular review cycle process for concrete projects and programmes.
- Follows either one-step or two-step approval process
- Submission of proposals does not require the inclusion of individual projects or programmes as decision-making for the funding of specific pilot activities has been devolved to the country level.

EDA proposal template

In general:

- ❖ Clear rationale should be provided on the use of Enhanced Direct Access as a modality to address the identified adaptation challenge.
- ❖ Include clear baselines, milestones, targets and indicators
- ❖ Oversight and management function should be properly explained under Implementation Arrangements
- ❖ Max: 50 pages for concept and 100 pages for fully developed project document and 100 pages for its annexes
- ❖ Refer to guidance document: INSTRUCTIONS FOR PREPARING A REQUEST FOR PROJECT OR PROGRAMME FUNDING THROUGH THE ADAPTATION FUND GRANT FOR ENHANCED DIRECT ACCESS
- ❖ Must be read in conjunction with the INSTRUCTIONS FOR PREPARING A REQUEST FOR PROJECT OR PROGRAMME FUNDING .

EDA proposal template

PROJECT/PROGRAMME PROPOSAL TO THE ADAPTATION FUND

PART I: PROJECT/PROGRAMME INFORMATION

Project/Programme Category: [**Enhanced Direct Access**] Small-sized / Regular

Country/ies:

Title of Project/Programme:

Type of Implementing Entity:

Implementing Entity:

Executing Entity/ies:

Amount of Financing Requested:

(in U.S Dollars Equivalent)

Insert the words Enhanced Direct Access before the text outlining whether the project/programme is a small sized or regular project/programme

EDA proposal template

Project / Programme Components and Financing



Project/Programme Components	Expected Concrete Outputs	Expected Outcomes	Amount (US\$)
1.			
2.			
3.			
4.			
5.			
6. Project/Programme Execution cost (max 12% of total budget requested before IE management fee) (Max 1.5% if IE also EE)			
7. Total Project/Programme Cost			
8. Project/Programme Cycle Management Fee charged by the Implementing Entity (if applicable) (Max 10% of total budget requested)			
Amount of Financing Requested			

EDA proposal template

PART II: PROJECT / PROGRAMME JUSTIFICATION

A. Describe the project / programme components, particularly focusing on the concrete adaptation activities of the project, and how these activities contribute to climate resilience. For the case of a programme, show how the combination of individual projects will contribute to the overall increase in resilience.

- ❖ Describe project components with focus on concrete activities
- ❖ Clearly articulate the characteristics of the EDA model to be followed
- ❖ Describe practical locally led adaptation solutions to funnel funding to vulnerable communities
- ❖ Articulate clear distinction from a “business-as-usual” and clearly demonstrate how proposed EDA approach enables sub-national level, including small, local organizations to identify adaptation needs and implement adequate measures to address those needs
- ❖ Explain EDA rationale in relation to the climate scenario(s) outlined in the background and context section

EDA proposal template

PART II: PROJECT / PROGRAMME JUSTIFICATION

A. Describe the project / programme components, particularly focusing on the concrete adaptation activities of the project, and how these activities contribute to climate resilience. For the case of a programme, show how the combination of individual projects will contribute to the overall increase in resilience.

- ❖ EDA projects/programmes expected to involve sub-projects which could be unidentified sub-projects (USPs)
- ❖ Note: Objectives of sub-projects should be aligned with those of the submitted project/programme, and AF Results Framework
- ❖ Follow USP guidance on ESP
- ❖ Articulate expected nature and type of sub-projects to be financed through EDA
- ❖ Higher level of technical assistance, monitoring and oversight expected - clearly describe arrangements for technical assistance and capacity-building to local project stakeholders or organizations

EDA proposal template

PART II: PROJECT / PROGRAMME JUSTIFICATION

A. Describe the project / programme components, particularly focusing on the concrete adaptation activities of the project, and how these activities contribute to climate resilience. For the case of a programme, show how the combination of individual projects will contribute to the overall increase in resilience.

- ❖ Describe how funding requests and proposals would be made including the review and decision-making process for those requests
- ❖ Describe specific arrangements for monitoring and oversight of project activities and fund flows.
- ❖ Clearly articulate partnerships undertaken as part of the multi-level decision making process
- ❖
- ❖ Include specific gender elements in the design of adaptation activities and expected outputs in line with GP.

EDA proposal template

PART III: IMPLEMENTATION ARRANGEMENTS

- A. Describe the arrangements for project / programme implementation.
- B. Describe the measures for financial and project / programme risk management.
- C. Describe the measures for environmental and social risk management, in line with the Environmental and Social Policy and Gender Policy of the Adaptation Fund.

- ❖ Particular attention to adequacy of project management arrangements
- ❖ Describe funding model and institutional levels involved
- ❖ Should be based on local contexts, needs and preferred decision-making structure at the local level

EDA proposal template

PART III: IMPLEMENTATION ARRANGEMENTS

- A. Describe the arrangements for project / programme implementation.
- B. Describe the measures for financial and project / programme risk management.
- C. Describe the measures for environmental and social risk management, in line with the Environmental and Social Policy and Gender Policy of the Adaptation Fund.

- ❖ Clearly describe roles and responsibilities of NIE, EE and other institutional structures/ Local stakeholders that are involved
- ❖ Recommended to provide a diagram or chart showing the decision-making structure and how different levels report to each other
- ❖ Describe how continued capacity-building and multi-stakeholder engagement would be carried out throughout project implementation

EDA proposal template

PART III: IMPLEMENTATION ARRANGEMENTS

- A. Describe the arrangements for project / programme implementation.
- B. Describe the measures for financial and project / programme risk management.
- C. Describe the measures for environmental and social risk management, in line with the Environmental and Social Policy and Gender Policy of the Adaptation Fund.

- ❖ Describe how environmental and social risks plus gender considerations will be identified, screened and addressed throughout implementation
- ❖ Implementing entities should generally not provide execution services. Can be approved on exceptional basis.



ADAPTATION FUND

Thank You!

www.adaptation-fund.org/readiness

