



ADAPTATION FUND

AFB/EFC.29/6/Rev.1  
17 May 2022

---

Adaptation Fund Board  
Ethics and Finance Committee  
Twenty-ninth Meeting  
Bonn, Germany (Hybrid meeting), 5-6 April 2022

Agenda Item: 5 a)

## **DRAFT EVALUATION POLICY OF THE ADAPTATION FUND**

**Technical Evaluation Reference Group of the Adaptation Fund  
(AF-TERG)**

## Background

1. The Adaptation Fund Board (hereafter ‘the Board’) endorsed the Evaluation Framework (EF), which currently guides the evaluation function of the Adaptation Fund (hereafter ‘the Fund’), at its thirteenth meeting (March 2011 – Decision B.13/20.a) and approved its revised version at the fifteenth meeting (September 2011 – Decision B.15/23).

2. In May 2020, the Board approved a multi-year work programme (FY21-FY23) of the Technical Evaluation Reference Group of the Adaptation Fund (AF-TERG), which included the plan to review the EF (Decision B.35.a-35.b/29). The review, which was presented to the Ethics and Finance Committee (EFC) of the Board in March 2021 (document AFB/EFC.27/7), concluded the EF had become outdated and recommended the development of an Evaluation Policy (EP) to replace it. In March 2021, having considered the findings of the review, and recommendation of the EFC, the Board decided

*“to request the Technical Evaluation Reference Group of the Adaptation Fund (AF-TERG), in consultation with the Adaptation Fund Board secretariat, to prepare a draft evaluation policy for the Adaptation Fund that would replace the current Evaluation Framework.”*

(Decision B.36/32)

## Introduction

3. This document provides members of the Board with background information to inform their consideration of the draft EP – annexed – for approval.

4. The draft EP is a stand-alone document that frames the Fund’s evaluation function by providing high-level strategic guidance. This is intended to bring it in line with Fund policies, strategy, and niche, and with best evaluation practice in climate change adaptation.

5. The document is organized into the following five sections:

- (a) The process of developing the draft EP
- (b) The value that the EP will add to the Fund (compared to the EF)
- (c) Implications of the draft EP for Fund entities
- (d) Proposed next steps
- (e) Recommendation.

## The process of developing the draft Evaluation Policy

6. The development and institutionalization of the draft EP has been organized into two major phases. This is consistent with the approach by peer organizations such as the Green Climate Fund, the United Nations Environment Development Programme, and the Global Environment Facility. Phase one developed a high-level, strategic fit-for-purpose EP, which the AF-TERG is submitting for Board discussion.

7. The process of developing this draft EP commenced in May 2020, after the Board approved a review of the existing EF. The EF review recommended development of a fit-for-purpose EP and function for the Fund in light of Fund developments, current climate change knowledge, evidence and learning needs, challenges, and opportunities, as well as international evaluation principles, norms and standards, and proven and emerging evaluation practices. This involved an inclusive, participatory, and robust process over three stages between October 2020 and February 2022 as follows:

**(a) Inception stage – October 2020 to March 2021**

The review concluded that the EF does not reflect significant Board decisions and Fund policies, strategies, and guidelines made since 2012. It recommended a new, high-level and strategic EP would be best suited to serve the Fund’s evaluation function. Consequently, after considering the recommendation of the EFC, the Board decided “to request the AF-TERG, in consultation with the Adaptation Fund Board secretariat, to prepare a draft EP for the Adaptation Fund that would replace the current Evaluation Framework” (Decision B.36/32). The review clarified that a policy provides high-level strategic guidelines and relies on lower-level supporting instruments for providing specific guidance.

**(b) Review of the Evaluation Framework and establishment of an Evaluation Policy Advisory Group stage – March to June 2021**

An in-depth review of the EF and evaluation policies of other climate and environment funds, coupled with consultations with internal stakeholders of the Fund and evaluation experts in four peer agencies,<sup>1</sup> resulted in the production of the initial structure and content of the draft EP. A multi-stakeholder Evaluation Policy Advisory Group (EP AG) consisting of balanced representation from across implementing entities (IEs), the Adaptation Fund Civil Society Organization (CSO) Network, the Board, and the Adaptation Fund Board secretariat (hereafter ‘the secretariat’) was established to provide advice to the process. This AG has met six times from August 2021 to February 2022.

**(c) Participatory policy formulation stage – June 2021 to February 2022**

The AF-TERG developed the draft EP in close collaboration with the secretariat, and with input from the EP AG. It produced three draft versions of the EP. Draft EP 1 was completed in October 2021 on which feedback was sought and received from IEs, the AF CSO Network, the secretariat and four peer organizations. This feedback informed the draft EP 2, completed in December 2021. All internal

---

<sup>1</sup> Green Climate Fund, Global Environment Facility, Climate Investment Funds, and the United Nations Development Programme.

stakeholder groups of the Fund, including Board members (in their individual capacity) were invited to comment on draft EP 2 via an online survey. The AF-TERG worked with the secretariat and the EP AG to incorporate survey feedback. It produced the draft EP 3 for submission to the Board in March 2022 for possible approval at its April 2022 meeting.

### **The value that the Evaluation Policy will add to the Fund (compared to the Evaluation Framework)**

8. The draft policy introduces incremental (and not radical) changes intended to bring significant improvements to the quality and value addition of evaluation. It reflects some important changes from the EF to enable the Fund's entities to develop evaluation capacities and adapt more easily. At the same time, the changes support the potential contribution of evaluation to the Fund's performance and impact. Primary benefits include: (i) enabling evaluation to contribute more strongly towards climate change adaptation (CCA) knowledge and innovation in the Fund; (ii) improving use of evaluation products to strengthen organizational performance at operational, strategic, and Fund levels (refer to Figure 1 in the final draft EP); and (iii) supporting evaluation's potential to better contribute to the Fund's impact and wider influence.

9. The main added value of the EP for the Fund (compared to the EF), which was part of AFB/EFC.28/Inf.3 and has been slightly modified and elaborated, includes:

- (a) *Enabling the Fund's evaluation function to contribute more effectively to its performance and impact by:*
  - (i) being a whole of Fund commitment to engagement of Fund stakeholders;
  - (ii) encompassing all areas of operations from the commissioning and design to the implementation, communication, and utilization of evaluations, at both the project and programme level, as well as strategic- and Fund-level; and
  - (iii) generating and promoting the utilization of evaluation evidence, lessons, and recommendations.
- (b) *Expanding the focus of evaluation good practice from learning and accountability towards a comprehensive and broader evidence-based MEL approach by:*
  - (i) encouraging stronger mutual linkages between aspects of monitoring, evaluation, and learning (MEL) and utilization within the Fund; and (ii) supporting evaluation as a key driver of evidence-based planning, critical learning, and adaptive management within the Fund.
- (c) *Expanding levels and types of evaluations to strengthen Fund performance and learning by:*
  - (i) adding thematic and instrument evaluations at the strategic level; (ii) adding ex-post evaluations and "real-time" evaluations at the operational level; and (iii) providing more options (beyond mandatory) for Fund stakeholders so they can select evaluation types most suited to their country needs.

- (d) *Adopting a more comprehensive approach to evaluation by:*  
recognizing and connecting with Fund policies, the Medium-Term Strategy, and Strategic Results Framework.
- (e) *Strengthening the Fund's uniqueness and niche by:*  
adding Fund-specific criteria and principles. Four new criteria include: equity, adaptive management, scalability, and human and ecological sustainability. Two new principles include: equitable and gender-sensitive inclusivity, and complementarity.
- (f) *Providing guidelines for allocating evaluation function budgets by:*  
suggesting (i) what the Board may consider in allocating funds for the evaluation function of IEs, the secretariat, and the AF-TERG; and (ii) development of an evaluation budget guidance document for Board approval towards making evaluation contribute more effectively to project performance, value addition, and impact. The guidance documents will be developed in Phase two.
- (g) *Aligning with the Paris Agreement processes by:*  
(i) tapping into the learning and evaluation opportunities presented by the “Global Goal of Adaptation” and the “global stocktake” (GST) of CCA progress; (ii) including evaluation principles and criteria related to equity, gender-responsiveness, incorporating indigenous and local knowledge, and valuing ecosystems; (iii) recognizing the need to incorporate the aspirations of Nationally Determined Contributions (NDCs) and the building of synergies between the IE MEL systems and national MEL systems; and (iv) providing for the sharing of lessons and good evaluation practice, and the strengthening of evaluation capacities.

### Implications of the draft Evaluation Policy for Fund entities

10. In the lead-up to approval of the draft EP, existing commitments under the EF will not be affected. But any subsequent new commitments will be expected to be aligned with the EP once it is approved. The table below outlines the main shifts from the current EF and the main implications for internal stakeholders.

Key changes	Implications
<b>Implementing entities:</b>	
<ul style="list-style-type: none"> <li>Stronger and more systematic focus on learning and adaptive management.</li> <li>Alignment/harmonization of evaluation with in-country evaluation</li> </ul>	<ul style="list-style-type: none"> <li>Conducting more/better quality evaluation work arising from the integration of MEL through stages of the project/programme cycle – readiness, planning, monitoring and evaluation, and utilization of evaluation products (for instance, ensuring existence of baselines, making provision for evaluation budgets, undertaking mid-term and final evaluations when these apply).</li> </ul>

systems to reduce duplication.	<ul style="list-style-type: none"> <li>Increasing institutional capacity for evaluation and utilization of evaluation products (for instance through knowledge products, participating in capacity development and South-South learning).</li> <li>Reviewing IE (own) evaluation systems in line with the provisions of the Board-approved EP and in harmony with national evaluation systems to ensure that IEs can meet commitments that will be made under the new EP.</li> </ul>
<b>The Board:</b>	
<ul style="list-style-type: none"> <li>Broaden emphasis from evaluation compliance to evaluation learning and use by all stakeholders to improve Fund performance and impact without compromising accountability.</li> <li>Emphasis shift to leverage evaluation lessons and evidence to inform and influence the global agenda for CCA action.</li> </ul>	<ul style="list-style-type: none"> <li>Oversight of proper and adequate introduction and implementation of EP (including through approving evaluation guidance, reviewing relevant provisions of the Operating Policies and Guidelines for Parties to Access Resources).</li> <li>Ensure evaluation evidence and lessons are utilized by relevant internal Fund stakeholders and inform the global agenda for CCA action.</li> </ul>
<b>Adaptation Fund CSO Network:</b>	
<ul style="list-style-type: none"> <li>Contribute to development of the Fund's evaluation guidance tools, and to Fund-level or strategic-level evaluations as critical friends.</li> </ul>	<ul style="list-style-type: none"> <li>Enhancing civic participation in evaluation processes of the Fund (including the development and review of evaluation guidance and participation in strategic- and Fund-level evaluations).</li> </ul>
<b>Secretariat:</b>	
<ul style="list-style-type: none"> <li>Emphasis shift from IEs' evaluation compliance towards active support for IEs to use evaluation lessons and improve delivery of results without compromising accountability.</li> <li>Joint responsibility with the AF-TERG to develop IE MEL capacity.</li> </ul>	<ul style="list-style-type: none"> <li>Lead development of a monitoring document aligned to the EP (including strategies on how IEs could incorporate evaluation evidence and learning for project effectiveness).</li> <li>Work with the AF-TERG to co-design and implement MEL capacity among Fund entities.</li> </ul>
<b>AF-TERG:</b>	
<ul style="list-style-type: none"> <li>Provision for working collaboratively with the secretariat in evaluation,</li> </ul>	<ul style="list-style-type: none"> <li>Lead development of a wider suite of evaluation guidance in collaboration with the secretariat.</li> </ul>

<p>learning, and supportive guidance documents; and for joint evaluation learning with peer and partner organizations contributing to CCA.</p> <ul style="list-style-type: none"> <li>• Provision for evaluation capacity development in the Fund.</li> </ul>	<ul style="list-style-type: none"> <li>• Work with the secretariat to support development of MEL capacity among Fund entities.</li> <li>• Future workplans and strategies will incorporate the new provisions under the policy.</li> </ul>
---	--

### Proposed next steps

11. Board approval of the draft EP would pave the way for Phase two, which will focus on introducing the Board-approved EP and development of detailed guidance documents intended to support implementation of the approved EP. These guidance documents would also be presented to the Board for approval. Phase two is also intended as a transition (from the EF to the EP) during which the AF-TERG and secretariat would collaboratively support capacity development of IEs to implement the approved EP and evaluation guidance.

12. Phase two is expected to be about 1.5 years from the date of approval of the draft EP, and to involve the following robust process of learning how to make use of the EP and its supporting guidance documents:

- (a) *Step 1 – April 2022*: Board discusses the draft EP and considers approval.
- (b) *Step 2 – May-July 2022*: The AF-TERG works with the secretariat to disseminate and socialize the approved EP to the Fund’s internal stakeholders.
- (c) *Step 3 – April 2022-February 2023*: The AF-TERG works in consultation with the secretariat and obtains advice from the EP AG in the participatory development of evaluation guidance for the Board’s consideration and approval. The envisaged guidance documents are intended to provide detailed “How To” guidance to help operationalize the EP. They currently include how-to guidance on:
  - (i) baseline data, real-time evaluation, mid-term reviews, final evaluations, ex-post evaluations
  - (ii) application of evaluation principles and evaluation criteria
  - (iii) budgeting for the evaluation function
  - (iv) quality assurance
  - (v) linking monitoring, evaluation, learning and planning.
- (d) *Step 4 – March 2023*: The full set of guidance documents will be presented at the March 2023 Board meeting for discussion and approval.

- (e) *Step 5 – April-September 2023*: The AF-TERG works with the secretariat to introduce the guidance documents and develop the capacity of IEs to implement the EP.
- (f) *Step 6 – October 2023 onwards*: The grace period expires and implementation of the EP begins.

13. The main budgetary costs of introducing and operationalizing the EP will be related to: (i) co-developing/improving evaluation guidance and processes; (ii) developing evaluation capacity to implement the EP; (iii) assisting IEs to harmonize Fund evaluation requirements with national evaluation systems, where there is demand, need and/or opportunity; (iv) implementing the new types of evaluation, namely, thematic and instrument evaluations, real-time and ex-post evaluations; and (v) tracking progress by the projects funded by the Fund towards achieving the Global Goal on Adaptation.

### **Recommendation**

14. The EFC may want to consider recommending the Board to consider the draft Adaptation Fund Evaluation Policy contained in Annex 1 of document AFB/EFC.29/6/Rev.1 and decide to:

- (a) Approve the draft Evaluation Policy of the Adaptation Fund contained in Annex 1 of the document AFB/EFC.29/6/Rev.1 as amended by the Board, as the Adaptation Fund Evaluation Policy, which shall not prejudice the Board's future consideration of the budget implications of the implementation of the Evaluation Policy.
- (b) Request the Adaptation Fund Technical Evaluation Reference Group (AF-TERG) to work in consultation with the secretariat to introduce the Fund's Evaluation Policy to the Fund's stakeholders.
- (c) Request the AF-TERG to develop, in consultation with the secretariat, evaluation guidance documents for the implementation of the Fund's Evaluation Policy, including budget implications, and to submit them to the Ethics and Finance Committee for consideration at its thirty-first meeting.



**Annex 1**



**ADAPTATION FUND**

**Draft Adaptation Fund Evaluation Policy**

17 May 2022

## Contents

Section 1: Purpose and rationale of the Evaluation Policy.....	1
Section 2: Definition and Scope of the Evaluation Policy.....	3
Section 3: Evaluation principles to guide the Fund’s evaluation practice .....	3
Section 4: Evaluation criteria to guide the focus of evaluations .....	5
Section 5: Evaluation categories and levels .....	6
Section 6: Roles, responsibilities and interconnections .....	10
Section 7: Budget guidelines for the evaluation function and levels.....	15
Section 8: Provision for evaluation guidance documents.....	16
Section 9: Evaluation Policy Lifecycle & Review .....	17
Annex A. Acronyms and Glossary.....	19
Annex B. Summary of key evaluation roles and responsibilities .....	25
Annex C. Bibliography.....	26

## Section 1: Purpose and rationale of the Evaluation Policy

1. The purpose of this Evaluation Policy (EP) is to identify the fundamental expectations, processes, and protocol to support a reliable, useful, and ethical evaluation function that contributes to learning, decision-making, and accountability for the Adaptation Fund (the Fund) to pursue its mission, goal, and vision effectively. It supersedes the Fund's 2012 Evaluation Framework (EF)<sup>2</sup>, and is to be supplemented with detailed guidance documents (to support its implementation per Section 8 below).

2. This EP outlines the evaluation function for the Fund and its entities, and lays out the evaluation function's goals, criteria, and principles. It also proposes to bring a more consolidated approach to stakeholder roles and responsibilities in relation to evaluation. The policy does not cover the monitoring functions<sup>3</sup> of the Fund, except those directly related to the evaluation function. The Fund's instruments that are dedicated to monitoring include the results-based management (RBM) system and Strategic Results Framework (SRF).

3. The policy recognizes that climate change is one of the greatest threats facing the planet's ecosystems and human population. Global surface temperature rise is almost certain to exceed 1.5°C by 2040 and is on a trajectory to exceed 3°C this century. These changes are already affecting weather and climate extremes in every region across the globe, and are causing increasingly stronger and compounding impacts on human life and ecosystems. Contributions to the Intergovernmental Panel on Climate Change Sixth Assessment Report (IPCC, 2021 and 2022) confirm that many changes in the climate system are already considered irreversible, even under the best scenario. Climate impacts on ecosystems have caused measurable economic and livelihood losses, altered cultural practices around the world and resulted in the displacement of over 20 million people since 2008. Around half of the world's population is already experiencing severe water scarcity for at least one month per year due to climatic factors. A billion people in coastal areas face inundation. Ten per cent or more of the world's agricultural land is predicted to become unfarmable by 2050. The IPCC reports note that impacts are more severe for people in highly vulnerable countries – the very populations the Fund is mandated to support. The urgency and gravity of the climate crisis, combined with the insufficient pace of adaptation solutions, compel the role of evaluation to become more agile in informing climate change adaptation (CCA).

4. The policy seeks to enable evaluation to contribute effectively towards the achievement of the mission, goal, and vision of the Fund, including the Paris Agreement, especially its Global Goal on Adaptation (GGA) through improved accountability, lesson learning and adaptive management, and evaluation-related capacity development (UNFCCC, 2015). The policy will also contribute more broadly to streamlined approaches to monitoring, evaluation, and learning (MEL) across the Fund. The EP aligns with the Fund's

---

<sup>2</sup> The EP was developed, building on the EF, to ensure the Fund's evaluation function adapts to trends in evaluation best practices and is fit for purpose to best serve the Fund.

<sup>3</sup> The Fund regards "monitoring" as an ongoing assessment of programme, project, and/or corporate strategy progress towards the achievement of expected results and outputs, focusing on process, effectiveness, and efficiency. See also glossary for expanded definition.

mission, niche, and strategic focus.<sup>4</sup> The policy also aligns with and reinforces the objectives of the Fund’s Environmental and Social Policy (ESP), Gender Policy (GP), and the SRF.

5. In particular, the EP proposes a more integrated approach to MEL. The Fund prioritizes MEL because “learning for effective adaptation” is a central tenet of the Fund’s mission, which is reinforced by its strategic focus of “learning and sharing” to ensure the Fund remains “effective, efficient, and fit for purpose” (Adaptation Fund, 2017). Such learning continues to be coordinated under the Fund’s Knowledge Management Strategy (2016) and is informed by information from the Fund’s monitoring and evaluation. Monitoring data will be considered during any relevant evaluative activity.

6. The rationale for the evolution of the EF to this EP is to better support:

- (a) quality evaluative practice and products for evidence-based learning, adaptive management and performance, and decision-making. This means broadening the interpretation and reporting of results and lessons into CCA spaces within the Fund.
- (b) systematic and integrated evaluation practice across the Fund, its stakeholders, portfolio, and practices, emphasizing broader stakeholder engagement, improved guidance/standards, and coherence with Fund policies, strategies, and reporting.
- (c) increased engagement and collaboration with the global community (e.g., the United Nations Framework Convention on Climate Change [UNFCCC], IPCC, and other climate funds) contributing to the Paris Agreement, including the participation in the generation of climate adaptation lessons and insights contributing to a knowledge base for use beyond the Fund.

7. The EP serves:

- (a) **the wider CCA community** through contributing to CCA evaluation thinking and action, and to the Paris Agreement’s global goal of “enhancing adaptive capacity, strengthening resilience, and reducing vulnerability to climate change, with a view to contributing to sustainable development and ensuring an adequate response in the context of the temperature goal” (UNFCCC, 2015).
- (b) **developing countries, and their most vulnerable communities and social groups**, by generating quality evidence, lessons, and insights on: (i) how to strengthen adaptive capacity and resilience; (ii) how to reduce the vulnerability of people, livelihoods, and ecosystems to climate change; and (iii) what works well/less well on concrete adaptation actions. Developing countries will also benefit from enhanced evaluation capacity and accountability of CCA initiatives to their constituencies and to the Fund.

---

<sup>4</sup> At time of policy development, the Fund’s strategic foci and niche are defined by its Medium-Term Strategy 2018 – 2022 (Adaptation Fund, 2017). Subsequent strategies will be incorporated into the policy during future reviews.

8. The added value of this EP is based on the following assumptions:
- (a) Evaluation will generate and share quality evidence, lessons, and insights timeously.
  - (b) Stakeholders will use evaluation learning to inform decision-making that addresses the CCA needs of all Fund stakeholders.
  - (c) Stakeholders to whom the EP applies are incentivized and have the capacity to operationalize and uphold the policy.

## **Section 2: Definition and scope of the Evaluation Policy**

9. The policy adopts the United Nations Evaluation Group's definition of evaluation: "An evaluation is an assessment, conducted as systematically and impartially as possible, of an activity, project, programme, strategy, policy, topic, theme, sector, operational area, or institutional performance. It analyses the level of achievement of both expected and unexpected results by examining the results chain, processes, contextual factors, and causality using appropriate criteria such as relevance, effectiveness, efficiency, impact, and sustainability. An evaluation should provide credible, useful evidence-based information that enables the timely incorporation of its findings, recommendations, and lessons into the decision-making processes of organizations and stakeholders" (UNEG, 2016).

10. The scope of the policy is a "**whole of Fund approach**" that engages all Fund entities in contributing to generating and optimizing the use of better quality evidence and learning across Fund operations. It encourages the evaluation function to optimize linkages with other essential learning, accountability, and informed action roles in the Fund. Such areas include monitoring, project design, proposal assessment, knowledge management, IE accreditation and reaccreditation, Board and management decision-making, quality assurance, stakeholder feedback, and external communication and influence of the adaptation community.

11. Though evaluation and monitoring are mutually reinforcing, the policy does not cover project monitoring, as indicated in Paragraph 2. Nevertheless, monitoring data are critical for conducting evaluations since they provide relevant information, including implementation progress via SRF indicators and each project performance report (PPR). Evaluations may verify an intervention's monitoring results against its targets, and generate lessons to improve project design and monitoring processes. In addition, near real-time evaluation processes may improve the monitoring cycle's contribution to adaptive management learning.

## **Section 3: Evaluation principles to guide the Fund's evaluation practice**

12. The evaluation principles identify the Fund's values, norms, and global best practice to guide evaluation practice. The policy introduces a set of evaluation principles to reinforce the Fund's values, niche, and the Paris Agreement to guide evaluation practice. This is to

ensure high quality fit-for-purpose evaluation processes and products, and to support processes of effective application of practical lessons and recommendations for achieving the aspirations of the Fund.

13. These principles apply at different stages of evaluation processes and should inform the: (i) terms of reference for conducting any evaluation; (ii) selection of evaluators; (iii) evaluation design; (iv) manner in which evaluations are conducted; (v) assessment of evaluation products; (vi) management responses; and (vi) packaging, communication, and utilization of evaluative products.

14. The following seven principles will guide evaluation and the evaluation function at the Fund:

- (a) *Relevance and utility* – each evaluation should respond to the interests and decision-making needs of its intended users at the different levels in the Fund; country and front-line adapters; and the wider CCA community.
- (b) *Credibility and robustness* – evaluations should apply justifiable approaches and methods for data collection, analysis, and presentation, conducted by suitably competent evaluators.
- (c) *Transparency* – evaluation should be transparent for “building and maintaining public dialogue, increasing public awareness, enhancing good governance, accountability and ensuring programmatic effectiveness” (Adaptation Fund, 2013).
- (d) *Impartiality and objectivity* – the selection and behaviour of evaluators, and transparency of decisions, should minimize bias in data collection and analysis. Any pre-existing interests of evaluation personnel to the Fund, the evaluated intervention, or entity should be avoided for independent evaluations and declared in planning and reporting for semi-independent and self-conducted evaluations.
- (e) *Equitable and gender-sensitive inclusivity* – evaluation methods and tools will be designed and deployed to ensure gender-disaggregated data collection is culturally sensitive and evidence generated is balanced and representative of different relevant stakeholder groups, with particular attention to the Fund’s GP and equity priorities. Stakeholder engagement and cogeneration in evaluation – especially country partners and the most vulnerable segments of front-line adapter communities – and incorporation of indigenous and local knowledge, is expected to increase the relevance, understanding, support, and use of evaluation findings.
- (f) *Complementarity* – where feasible, each evaluation’s objectives, processes, and lessons should be aware of and contribute to cross-organizational learning with country partners, within the Fund, and between the Fund and its partners or other climate finance delivery channels.
- (g) *Complexity-sensitive and adaptive* – Fund interventions occur in dynamic and complex contexts, as do their evaluation. Fund evaluations will be prepared to flex

and adapt around the needs of stakeholders, emergent learning, and any unexpected challenges during the evaluation exercise. This approach will maintain the commitment to usability and with attention to the systems orientation inherent in transformational change work.

#### **Section 4: Evaluation criteria to guide the focus of evaluations**

15. Evaluation criteria refer to results and lessons most valued by the Fund, and therefore, what should be assessed. Evaluation criteria are used to guide development of evaluation questions, conduct analysis, and present conclusions. They also ensure that data generation and analysis support reflection and critical thinking, as well as the production of high-relevant evaluative evidence. The EP recognizes the OECD's own understanding that the Development Assistance Committee (DAC) criteria "are not a particularly useful tool for descriptive analysis of transformative change or systems change" (OECD/DAC, 2020) and are suited for evaluating projects and programmes in familiar, comfortable, and well-known interventions (Patton, 2021). Consequently, the EP has a set of nine criteria. The first five correspond with DAC evaluation criteria. Four additional criteria are introduced for Fund evaluations to choose, justify, and apply that are better suited to support learning, accountability, and utilization for CCA (OECD/DAC, 2019).

16. The intended use of an evaluation will determine the criteria and principles needed. The AF-TERG should approve the design and tailoring of different evaluation criteria for specific evaluation purposes. If an evaluation commissioner or evaluator considers any of the policy's criteria or principles to be inapplicable to a specific evaluation, they must justify the evaluation terms of reference or inception report/evaluation design to the AF-TERG..

17. The Fund's nine evaluation criteria are as follows (guidance on how to select and apply these will be developed):

- (a) *Relevance* – the extent to which the intervention objectives and design respond to beneficiaries, and global, country, and partner/institution needs, policies, and priorities, and continue to do so if circumstances change. Relevance also refers to the intervention's consistency with country-driven priorities. To encourage utilization, each evaluation should optimize relevance by ensuring (i) that the primary intended users of the evaluation and their intended uses are clearly identified and engaged at the beginning of the evaluation process; (ii) that "intended users" include funding, implementing, and beneficiary stakeholders; and (iii) that evaluators ensure these intended users contribute to decisions about the evaluation process.
- (b) *Coherence* – the extent to which the intervention is compatible with other interventions in a country, sector, or institution.
- (c) *Effectiveness* – the extent to which the intervention achieved, or is expected to achieve, its objectives and results, including any differential results across groups

(considering the extent to which the evaluand has accomplished SRF indicator targets).

- (d) *Efficiency* – the extent that the intervention is cost effective and timely, and does not consume unnecessary time and resources. This includes value for money, which encompasses spending wisely, spending less, spending well, and spending fairly.
- (e) *Impact* – the extent to which the intervention has generated or is expected to generate significant positive or negative, intended or unintended, higher-level effects.
- (f) *Equity* – consistent with the Fund’s Environment and Social Policy (ESP) and GP, the extent to which the design and implementation includes input of the designated authority (DA) and vulnerable groups such as women, youth, persons with disability, Indigenous Peoples, minorities, and other potentially marginalized groups or locations. It also encompasses the degree to which the intervention reduced or perpetuated inequalities, and how equitably benefits were accrued to vulnerable groups.
- (g) *Adaptive management* – the extent to which the intervention adapted during implementation in response to lessons and reflections during implementation; and the extent to which the intervention supports the use, development, or diffusion of innovative practices, tools, or technologies to improve or accelerate CCA.
- (h) *Scalability* – the extent to which the intervention demonstrates that CCA can be increased or replicated at a broader scale, as well as in other contexts.
- (i) *Human and ecological sustainability and security* – the extent to which the intervention is likely to generate continued positive or negative, intended and unintended impacts beyond its lifetime, taking into consideration, social, institutional, economic, and environmental systems. Is the intervention sensitive to conflict and fragility, i.e., to what extent does it consider the political context and the sharing of natural resources? Is it contributing towards targeted communities’ livelihoods and to the health or well-being of the ecosystems on which they depend?

## Section 5: Evaluation categories and levels

18. This policy recognizes three categories of evaluation:

- (a) **Independent evaluations** are conducted by individuals and entities independent from those responsible for the design and implementation of the intervention, and with no prior operational involvement or conflict of interest in the evaluated intervention.



- (b) **Self-conducted evaluations** are conducted by personnel within the management or operational structure of the entity implementing the evaluated intervention, and may include other stakeholders.
- (c) **Semi-independent evaluations** are conducted by an evaluation team comprised of a combination of independent evaluators and personnel within the management or operational structure of the entity being evaluated, as well as other relevant stakeholders.<sup>5</sup> All categories need to follow the policy's evaluation principles and criteria.

19. The policy identifies three levels of evaluation important to the continuous improvement of Fund performance:

- (a) Fund-level evaluations
- (b) strategic-level evaluations
- (c) operational-level evaluations.

20. Each contains several types of evaluation activity, as elaborated in Figure 1.

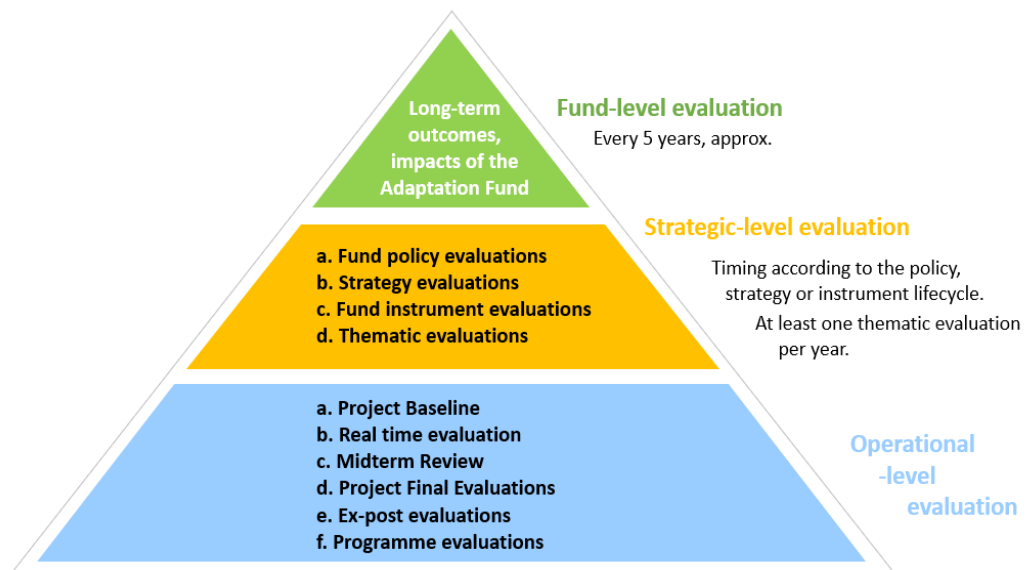


Figure 1. Levels and indicative types of evaluations to be pursued

21. **Fund-level evaluations.** The Board may commission the AF-TERG to assess the long-term outcomes and impacts of the Fund (approximately every five years). Representatives of eligible countries, the donor community, Board members, secretariat, peer organizations, IEs, and other stakeholders shall be invited to provide insights during the consultative phase of such evaluations. The Board may seek to create an Advisory Group (AG) to guide the evaluation, representative of experts and key stakeholders.

<sup>5</sup> See the Glossary in Annex A for more detailed descriptions.

22. **Strategic-level evaluations.** The AF-TERG will conduct, commission, and/or manage these evaluations and synthesis studies by request or approval from the Board to assess the Fund's performance to enable developing countries to adapt to climate change impacts, and to keep the Fund abreast of developments that can inform theories of change for CCA (Adaptation Fund, 2018, para 26). Strategic-level evaluations fall into four types:

- (a) **Policy evaluations.** These assess the Fund's policies, **and** may be independent or semi-independent, depending on their rationale.
- (b) **Fund strategy evaluations.** These assess the Fund's highest-level strategies in accordance with each strategy's lifecycle.
- (c) **Fund instrument evaluations.** These assess Fund instruments, such as structures, funding mechanisms and processes, and depending on the evaluation need, they may be independent or semi-independent (for example, in collaboration with the secretariat).
- (d) **Thematic evaluations.** The AF-TERG may conduct or propose for Board approval one or more thematic evaluations annually. In addition, the Board, the secretariat or the AF-TERG may propose an evaluation or a synthesis of materials that covers a collection of projects under a priority theme. Thematic evaluations include the Fund's participation in joint evaluations with partners.

23. **Operational-level evaluations.** Mandatory and non-mandatory evaluations are used at the Fund's operational level as outlined below. Evaluation guidance resources will be developed to support both categories of evaluations.

- (a) **Mandatory project evaluations.** IEs, with the input of DAs, are required to budget for and commission evaluative exercises noted below over the lifetime of each project. If a protracted disruption, such as a conflict, disaster, or pandemic, affects a project, the IE can seek Board approval to adjust the project evaluation requirement.
  - (i) **Baseline data report.** IEs shall prepare and submit a project baseline report based on primary data collection and/or relevant and reliable secondary data, per the Fund's "Results Framework and baseline guidance." Baseline data are to be used for designing the project, setting targets, and monitoring implementation progress, and assessing performance and outcomes. Baseline data shall be submitted to the secretariat by no later than the submission of the first PPR. The baseline data report may be conducted independently or semi-independently, or self-conducted.
  - (ii) **Mid-term Review (MTR).** IEs are required to conduct MTRs of any project with four or more years of implementation, and to submit the MTR report to the secretariat no later than six months after the project midpoint. MTRs are formative evaluations to assess project performance and context to inform project management decision-making and course correction during the remaining implementation period. The IE is to submit a management response

to the MTR report to the secretariat within six months of receiving the MTR report, describing what, why, and how MTR learning will be utilized. The MTR may be conducted independently or semi-independently. MTRs are optional for projects less than three years in duration; these may be self-conducted.

- (iii) **Final project and programme evaluation.** All Fund-supported projects and programmes that complete implementation should conduct a final evaluation to assess project/programme performance and impact to support learning and accountability, and inform future CCA interventions. The audience for final evaluation is broad, including the IE and the Fund, the intended beneficiaries and project participants, Fund partners, and other relevant stakeholders.

**Projects:** All IEs are required to commission an independent final evaluation of their projects, submitted to the secretariat and the DA within nine months of project completion.

**Programmes:** Programme evaluations approved and implemented under a single IE agreement are to be planned and budgeted as final project evaluations. Programme evaluations for projects involving multiple IEs are to be selected, planned, budgeted, and managed as thematic evaluations. Programme evaluations seek to generate lessons and insights across projects, countries, regions, and/or IEs. For the programme evaluations, IEs will be notified within three months of approval of the Fund's evaluation budget whether their project has been selected for the programme evaluation. IEs are to submit to the secretariat and the DA or DAs a management response to the final evaluation report within six months of receiving the evaluation report. This should describe what, why, and how final evaluation learning will be incorporated into current or future AF Fund work.

(b) **Non-mandatory operational-level evaluations**

Each IE will decide whether to conduct non-mandatory operational evaluations as outlined below. Other non-mandatory approaches may be used with rationale and justification provided to the AF-TERG.

- (i) **Real-time evaluation (RTE).** The nature of unpredictable environmental and social dynamics, (e.g., disruptions such as natural disaster, economic recession, pandemics, or social conflict), require projects to be nimble and course correct according to contextual changes and emergent learning during project implementation. RTE is “a range of evaluative approaches, reviews, and assessments with the purpose of understanding and articulating issues that need to be addressed in an ongoing development or humanitarian response, that can be fed back immediately into programming, decision-making and management processes with the overall aim of improving the response” (Buchanan-Smith and Morrison-Métois, 2021). RTEs are encouraged but not mandatory, but when planned they must be incorporated into the project budget. They may be self-conducted, independent, or semi-independent evaluations.
- (ii) **Ex-post evaluations.** As required by the Board, the AF-TERG will conduct ex-post evaluations three to five years after closure of selected Fund-financed

projects to assess and inform learning from longer-term impact and sustainability. Ex-post evaluations will be useful entry points to support longitudinal learning, assess the Fund's contribution to the wider CCA community, and to assess and track the Fund's contribution to the GGA.<sup>6</sup> They are not required of all projects but will be determined by the AF-TERG in consultation with the secretariat. Like thematic evaluations, ex-post evaluations generate learning that contributes to achieving the Fund's longer-term mission and goal, as well as the longer-term interests and needs of IEs. Ex-post evaluations are to be budgeted by the AF-TERG under the Fund's evaluation function. IEs whose projects will be selected for ex-post evaluations will be informed within three months of approval of the selection.

## Section 6: Roles, responsibilities, and interconnections

24. The intended users of this policy are the Board, IEs, DAs, the Adaptation Fund Civil Society Network, the secretariat, and the AF-TERG. A summary of how evaluation will contribute to their work is outlined below:

- (a) the Conference of the Parties serving as the Meeting of the Parties to the Kyoto Protocol (**CMP**), and the Conference of the Parties serving as the meeting of the Parties to the Paris Agreement (**CMA**), to which the Board is accountable regarding all Fund and Board activities, including evaluation functions, by contributing to CCA evaluation thinking and practice. The Board manages and supervise the Fund under the respective authority and guidance of the CMP and CMA.
- (b) **the Board** and its decision-making oversight of the Fund – by generating relevant and timely evaluative evidence, learning, insights, and advice on climate adaptation and financing; Fund governance; and strategy design and implementation to inform Board decision-making for oversight of the Fund.
- (c) **IEs, DAs, non-governmental organizations (NGOs), and civil society** – by generating evidence and advice on how to strengthen adaptive capacity and resilience and how to reduce the vulnerability of people, livelihoods, and ecosystems to climate change; and by enhancing accountability to different stakeholders. The policy also supports them to link with national monitoring and evaluation systems that are supposed to feed in international monitoring and evaluation systems and provide inputs into the global stocktake.
- (d) **The secretariat** – by clarifying its contribution to the evaluation function; generating evaluative evidence and insights on the Fund's strategies, operations, and contribution to intended outcomes and impacts; and enhancing its accountability to the Board.

---

<sup>6</sup> The Global Goal on Adaptation is Article 7 of the 2015 Paris Agreement, UNFCCC (2015).

- (e) **The AF-TERG** – by providing high-level guidance on its role in the broader evaluation function of the Fund, including its evaluative, advisory, and oversight functions.

25. All funding proposals and accreditation/reaccreditation applications should consider the provisions of the EP. In their planning and conduct of evaluations financed by the Fund, all stakeholders will apply the principles and criteria presented in this policy in line with and without prejudice to their organizational evaluation policies.

26. Overall, the AF-TERG is responsible for commissioning, conducting, and managing high quality evaluations at the strategic and Fund levels, whereas the secretariat is responsible for quality assurance of operational-level evaluations. However, the AF-TERG shall collaborate with the secretariat to establish mechanisms and develop/update quality assurance guidance materials.

27. The following paragraphs indicate how each entity contributes to the evaluation function in relation to three overarching roles: *generation of evaluations*, *utilization of evaluations* and *evaluation capacity development*. Annex B summarizes the role of evaluation function and those of each Fund entity. Generation of evaluation entails: generating new evidence and recommendations to inform the design, implementation, and adaptive management of projects and programmes, or Fund-wide strategy. Utilization of evaluations includes identifying and assessing innovative and promising CCA actions and how they may be scaled, accelerated, and strengthened, while enhancing accountability to front-line adapters (intended beneficiaries), the Board, contributors, and ecosystems. Evaluation capacity development includes training, provision of resource materials and advice, practice-based learning, and learning from the experience of others.

28. The Board, its committees, and its functions have specific responsibilities towards the evaluation function:

- (a) *Generation of evaluations* – the Board, through the EFC, oversees the evaluation function of the Fund and will continue to encourage a culture of accountability and applied learning across the Fund based on evaluative evidence. The Board approves and oversees implementation of all Fund policies, including the EP, with updates from the AF-TERG on policy implementation. The Board may commission Fund-level and strategic-level evaluations as it sees fit. It also approves monitoring and evaluation budgets across all three levels and types of evaluation.
- (b) *Utilization of evaluations* – the Board decides how best to consider and incorporate lessons and recommendations from all Fund-level and strategic-level evaluations, as well as evaluation syntheses by the AF-TERG, including the corresponding secretariat management response, for improvement of Fund operations. The Board encourages the use of evaluation-generated evidence in global discussions related to CCA, and to promote the Fund's CCA expertise, lessons, and achievements.

- (c) The Board, through the PPRC, reviews and approves proposals from IEs, which should include a dedicated monitoring and evaluation budget aligned with the OPG.
- (d) The Board's Accreditation Panel will consider evaluation findings in its accreditation or reaccreditation of IE<sup>7</sup> based on the performance of the entity's previous projects. This includes IE's management response and corrective actions to evaluation recommendations in cases where substantive concerns have been raised.

29. The secretariat has the following specific responsibilities towards the evaluation function:

- (a) *Generation of evaluations* – the secretariat will provide necessary guidance to IEs to plan and conduct operational-level evaluations. It may advise the Board in relation to the needs and opportunities for strategic-level evaluations, and it may also undertake self-conducted evaluations at the strategic level. The secretariat also contributes insights to Fund-level and strategic-level evaluations when called upon.
- (b) *Utilization of evaluations* – the secretariat's knowledge management function ensures that knowledge, evidence, and lessons from operational-level evaluations are stored, accessible, and useful to IEs, DAs, Civil Society Network partners, and other partner institutions. The secretariat will draft a management response for the Board within a reasonable time. It will then institutionalize and report on incorporation of lessons and recommendations from Fund-level and strategic-level evaluations as they relate to the secretariat's functions. In its work with other organizations, the secretariat will also highlight relevant evaluative evidence and lessons from Fund operations.
- (c) *Evaluation capacity development* – the secretariat will periodically engage with the AF-TERG to continuously improve the monitoring and evaluation capacity of its relevant personnel. The secretariat and the AF-TERG will consult with each other in the development of their evaluation work programme and on possible capacity-building activities related to the evaluation function. The secretariat will ensure that its readiness programme, particularly with IEs, includes aspects related to evaluation capacity and evaluative evidence coming from the evaluations conducted at the Fund.

30. Implementing entities have the following specific responsibilities towards the evaluation function:

- (a) *Generation of evaluations* – IEs will commission or conduct evaluations for each project/programme according to this EP. IEs may seek guidance from the secretariat on operational-level evaluation responsibilities that are required in proposals and during project implementation.

---

<sup>7</sup> To fulfil clause 6 of the Terms of Reference of the Accreditation Panel (updated May 2020).

- (b) *Utilization of evaluations* – IEs will utilize operational-level evaluation evidence to improve ongoing projects and future project proposals. They will incorporate evaluation insights, as appropriate, into their communication activities, reflections, and evolutions of their CCA-related strategies and plans. IEs are strongly encouraged to share learning and knowledge, such as promising practices, with relevant partners through peer, national, and international platforms and other knowledge-sharing mediums and outlets. They will also provide updates to the DAs on implementation progress based on findings from MTR, RTE, and final evaluations.
- (c) *Evaluation capacity development* – IEs will periodically review their own evaluative capacity relative to the requirements of this EP. As such, IEs will collaborate with the secretariat and the AF-TERG to identify relevant opportunities for their profession evaluation and learning capacity development. They will also contribute to the Fund's development of new evaluation techniques and guidance that support the application of this policy in pursuit of the Fund's mission and vision.

31. Designated authorities (DAs) have the following specific responsibilities towards the evaluation function:

- (a) *Generation of evaluations* – DAs are encouraged to cooperate with IEs that are conducting operational-level evaluations, including facilitating timely access to information and personnel directly or indirectly related to the project. They are expected to participate in evaluation design and data interpretation discussions, and site visits, as relevant, appropriate and possible. DAs are encouraged to input into evaluations to inform the extent to which a project is relevant to the country's Nationally Determined Contributions (NDCs), National Adaptation Plans (NAPs), National Adaptation Programme of Action (NAPAs), Adaptation Communications (ADCOMs) or other relevant climate change-related strategies and plans. DAs should also cooperate with Fund entities and consultants if a Fund-level or strategic-level evaluation relates to their country or country context (e.g., geographic, economic, or cultural).
- (b) *Utilization of evaluations* – DAs are encouraged to incorporate evaluative evidence and lessons from evaluation reports related to their country, geographic, or socioeconomic context into the country's own CCA intelligence, strategies, and plans, including Biennial Transparency Reports (BTRs).
- (c) *Evaluation capacity development* – DAs are encouraged to use evaluation guidance documents and participate in evaluation events to support national evaluation capacity development, in alignment with the United Nations General Assembly Resolution for Building Capacity for the Evaluation of Development Activities at the Country Level (UNGA, 2015).

32. The AF Civil Society Organization (CSO) Network partners have the following specific responsibilities towards the evaluation function:

- (a) *Generation of evaluations* – CSO Network partners will collaborate with Fund entities and consultants hired by the entity if an operational-, Fund-, or strategic-level evaluation is related to their sectoral interests or operational contexts (e.g., geographic, economic, or cultural).
- (b) *Utilization of evaluations* – CSO Network partners are encouraged to consider the application of the Fund’s evolving evaluation guidance as they engage in monitoring and evaluation of Fund-supported projects. Network Partners may also consider the application of lessons and recommendations from Fund evaluations relevant to their own programming sectors.
- (c) *Evaluation capacity development* – CSO Network partners may access and utilize AF-TERG evaluation guidance documents for their own capacity development. Network partners are encouraged to contribute to the Fund’s development of new evaluation techniques and guidance that support application of the policy’s evaluation criteria and principles.

33. The AF-TERG has the following specific responsibilities towards the evaluation function (Adaptation Fund, 2018):

- (a) *Generation of evaluations* – the AF-TERG will facilitate the generation of quality, useful evaluations via three responsibilities:
  - (i) *Management responsibility*: Independently manage, commission, and/or conduct evaluations in the Board- approved work programme at the Fund and strategic levels. It will also report to the Board on lessons, findings, conclusions, and recommendations from relevant evaluation reports.
  - (ii) *Advisory responsibility*: Develop draft guidance, templates, and other evaluation resources for Board approval to support and operationalize this EP and upholds a reliable, timely, and useful evaluation function that contributes to the Fund’s mission and vision. It will also conduct evaluation capacity development to support evaluation and learning across the Fund.
  - (iii) *Oversight responsibility*: Provide quality assurance over the evaluation function at the Fund, and track implementation of Board decisions related to evaluation recommendations. This includes advising the Board in its efforts to incorporate evaluation findings and recommendations into policies, strategies, and procedures.
- (b) *Evaluation utilization* – the AF-TERG will support relevant knowledge management functions of the Fund to ensure that evaluative evidence is available and encouraged across the Fund (Adaptation Fund, 2018, para 18a). In addition to sharing insights from individual evaluations, the AF-TERG will synthesize and present to the Board any key lessons from strategic evaluations and targeted evaluation syntheses for the improvement of the Fund’s performance (Adaptation Fund, 2018, para 24) and the CCA capacities of its partners. It will also report to



the Board on incorporation of lessons and recommendations from strategic-level evaluations as they relate to the AF-TERG's functions.

- (c) *Evaluation capacity development* – the AF-TERG is responsible for continuously updating the Fund's evaluation knowledge, capacity development, and utilization to position the Fund at the forefront of evaluation innovation and adaptation practice.<sup>8</sup> Such positioning is to optimize the Fund's effectiveness via continuous improvement in learning and reinforce the Fund's reputation and relevance as a thought leader in global climate adaptation efforts. The AF-TERG will consult with the secretariat and IEs to develop Fund evaluation guidance that is relevant and user-friendly, and pursue local institution-building, decision-making, learning, and accountability. The AF-TERG is responsible for ensuring evaluation guidance options for IEs' continuous adaptive management learning via near RTE, through to long-term project and operational learning demands.<sup>9</sup> It is responsible for nurturing networks and opportunities for South-South evaluation sharing of evaluation outcomes and evaluation techniques, and evaluation capacity exchange with other organizations with CCA interests.<sup>10</sup> To realize its responsibilities under this policy and its terms of reference, the AF-TERG will develop and submit to the Board its revised workplans and budgets, including options to appropriately resource the AF-TERG secretariat.

## **Section 7: Budget guidelines for the evaluation function and levels**

34. The Board will continue to approve the budget of the evaluation function. In doing this, the Board may consider comparable international standards on the level of financing of the evaluation function. It may also consider the need for adequate funding to enable evaluation to make a valuable contribution to project performance and impact.

35. The EP proposes further development of budget guidelines, in tandem with development of evaluation guidelines, that would cover all levels and types of evaluation activity outlined in this policy. The AF-TERG will develop budget guidelines, in consultation with the secretariat, for Board approval in line with the policy's thrust of making evaluation contribute directly to project performance, value addition, and impact.

36. Three Fund stakeholders will continue to receive, through different ways, budgets to implement the evaluation function:

- (a) the AF-TERG – for continuing to present and deliver a three-year workplan aligned with the levels and types of evaluative activity outlined in Figure 1, with an accompanying two-year budget to allow for continuity of evaluations with longer-time frames and spanning fiscal years. These documents are approved by the

<sup>8</sup> In harmony with par. 18b), Adaptation Fund, 2018)

<sup>9</sup> In fulfilment of the Adaptation Fund's Mission to "strengthen long-term institutional and technical capacity for effective adaptation..." and Vision: "Developing country Parties are successfully enhancing adaptive capacity, strengthening resilience and reducing vulnerability to climate change..."

<sup>10</sup> In fulfilment of the Adaptation Fund's niche "Pragmatic learning and sharing, especially through South-South collaboration." Adaptation Fund, 2017, p.25.

Board. Forward workplans and budgets will integrate support to implementing this policy, following its approval by the Board.

- (b) the Secretariat – for undertaking functions that include aspects of monitoring, evaluation, and knowledge management as they relate to this EP.
- (c) IEs – for resourcing their operational-level evaluations in line with the EP. Each project proposal will continue to reflect separate but complementary monitoring and evaluation budget lines in accordance with the Fund’s Operating Policies and Guidelines for Parties to Access Resources (OPG). This could include provision for the baseline data report, MTR or RTE (if duration is four years or more) and final evaluation, as well as other evaluation activities appropriate and relevant to the project.

### **Section 8: Provision for evaluation guidance documents**

37. The AF-TERG, in consultation with the secretariat, is responsible for developing and maintaining accessible evaluation guidance documents for Board approval. The guidance documents will be used to facilitate implementation of this policy in line with the Fund’s strategic priorities, niche role, and considering the Fund’s capacities to make the transition to this policy. The secretariat will review alignment of any proposed guidance with OPG and existing policies related to monitoring and evaluation. The AF-TERG will collaborate with the secretariat and IEs to ensure that any existing and proposed guidance is implementable and useful to IEs and compatible with other guidance documents generated by the Fund for other functions.

38. Such guidance will include, but will not be limited to, reporting templates, guidance documents, and evaluation capacity-development packages that serve the evaluation and learning needs of Fund entities and implementing partners.

39. Consistent with the Fund’s Direct Access modality, evaluation guidance will prioritize increasing the Fund’s and partners’ knowledge to improve and accelerate their own evaluation capacities and practice, with attention to in-country and locally led adaptation evaluative thinking and decision-making (UNGA, 2015), as well as the inclusion of indigenous knowledge in evaluation. Therefore, guidance should support evaluation processes, accountability, learning, and utilization outcomes that are not only valuable to the Fund and its contributors, but also to implementing, country-level, and front-line CCA stakeholders.

40. Where practical, any newly introduced evaluation guidance instruments should be coherent with evaluation efforts of other climate action institutions. However, they should also pay attention to the uniqueness of the Fund and the need to be adaptable to country-level and local requirements, as well as the diversity of IE capacities and needs.

41. The use of the Fund’s evaluation report templates is mandatory, unless the Fund does not have a template for a certain evaluation function. In these cases, the evaluation commissioner or evaluator may propose their own for AF-TERG approval. In cases where

IEs have their own evaluation report templates mandated for use by their evaluation guidance, and as long as these templates do not contradict the Fund's template and include all the elements of the Fund's template, the IE may adapt the Fund templates to meet the needs of both the IE and the Fund.

42. Apart from report templates, IEs may make their own decisions about the utility and application of the Fund's evaluation methodology guidance resources relative to and in line with their guidance and other sources. Whatever guidance is used, the evaluation must uphold and apply the standards of this EP.<sup>11</sup>

43. Versions of templates will be updated and superseded over time, with any changes. The AF-TERG will communicate the changes in a timely manner to all relevant stakeholders. Entities responsible for generating Fund-related evaluations are responsible for ensuring they have the most recent templates.

### **Section 9: Evaluation Policy Lifecycle & Review**

44. Fund-supported project MTRs or final evaluations that take place less than 1.5 years after approval of this policy may choose to apply evaluation standards from this policy or the Fund's previous 2012 Evaluation Framework. As of 1.5 years after the Board's approval of this policy, all Fund evaluations must adhere to this policy's requirements and good practices.

45. IEs, the secretariat, and the AF-TERG are responsible for ensuring that these requirements and good practices are observed. These responsibilities begin as of the date of Board approval of the policy. Each responsible entity should incorporate any new procedures, documentation, and personnel adjustment plans within one year of the approval of the policy – recognizing that realization of such plans may take longer.

46. The AF-TERG will collaborate with the secretariat to monitor and report on the implementation of the EP, reporting annually to the Board on progress. As required by the Board, the AF-TERG will support the Board in reporting to the CMP and CMA on the Fund's progress regarding CCA evaluation and learning. The EP monitoring and progress reports will be made available to the wider public as well.

47. This policy is to be reviewed and updated no later than five years from its approval date. The Board reserves the right to request a review of the policy earlier, based on advice from the AF-TERG or the secretariat. The review of the policy should consult with and consider the evaluation interests of representatives of Board committees, IEs, Civil Society Network partners, DAs, and the acting MTS at the time of updating.

48. The AF-TERG, in consultation with the secretariat, will facilitate a policy review after any Board decision for such a review.

---

<sup>11</sup> The policy's standards refer to its principles, criteria, evaluation categories and types, budget parameters and utilization of the Fund's evaluation report templates.

## Annexes

### Annex A. Acronyms and Glossary

#### ACRONYMS

ADCOM	Adaptation Communication
AFB	Adaptation Fund Board
AF-TERG	The Technical Evaluation Reference Group of the Adaptation Fund
AP	The Accreditation Panel (of the Adaptation Fund)
BTR	Biennial Transparency Report
CCA	Climate change adaptation
CHANS	Coupled human and natural systems
CMA	Conference of the Parties serving as the meeting of the Parties to the Paris Agreement
CMP	Conference of the Parties serving as the Meeting of the Parties to the Kyoto Protocol
DA	Designated Authority
DAC	Development Assistance Committee
EF	Evaluation Framework
EFC	Ethics and Finance Committee
EP	Evaluation Policy
ESP	Environmental and Social Policy
GP	Gender Policy
IE	Implementing Entity
IEO	Independent Evaluation Office
LDC	Least Developed Country
MTE	Mid-term Evaluation
MTR	Mid-term Review
MTS	Medium-Term Strategy
MIE	Multilateral Implementing Entity

NAP	National Adaptation Plan
NAPA	National Adaptation Programme of Action
NDCs	Nationally Determined Contributions
NIE	National Implementing Entity
OPG	Operating Policies and Guidelines for Parties to Access Resources
PPRC	Project and Programme Review Committee of the Adaptation Fund
RBM	Results-Based Management
RIE	Regional Implementing Entity
RTE	Real-time evaluation
SDGs	Sustainable Development Goals
SIDS	Small Island Developing States
SRF	Strategic Results Framework

## GLOSSARY OF TERMS

Accountability	The assessment of results, effectiveness, processes, and performance of Fund-financed activities and their contribution to those objectives.
Accreditation	The process by which organizations can access Fund resources. IEs can achieve accreditation by meeting the standards set by the Fund. The accreditation standards relate to legal status, financial and management integrity, institutional capacity and transparency, self-investigation, anti-corruption, and compliance with the ESP and, most recently, its GP.
Adaptive Management	A monitoring, evaluation and learning (MEL) concept that recognizes that climate change adaptation and other development interventions are delivered in dynamic, unpredictable, and often contested contexts and systems; that, in these contexts, they need to be innovative; and that how best to deliver results in these contexts is uncertain. Therefore, to enable initiatives to identify early signals of potential systemic change, MEL systems must enable ongoing and real-time learning, course correction, and decision-making to improve effectiveness (Gregorowski and Bours, 2020, 2022).
Baseline data	An analysis describing the situation prior to a development intervention, against which progress can be assessed or comparisons made (Adaptation Fund, 2011, p. 22).
Entity associated with the Fund/ Fund Stakeholders	Fund stakeholders include internal entities, plus the Conference of the Parties, the United Nations Framework Convention on Climate Change (UNFCCC), IEs, executing entities, NDAs and the AF NGO Network.

Evaluation	Assessment of intervention(s) to determine what works and what does not, and the extent to which intended and unintended results are accrued, as well as their impact on stakeholders. It provides evidence-based information that is credible and useful, enabling incorporation of findings, recommendations, and lessons into decision-making processes.
Evaluation evidence	Presentation of data and facts generated through an assessment process conducted either by the AF-TERG, the secretariat, the independent units of IEs, or independent evaluators. Evaluation evidence includes evaluations, reviews, studies, and syntheses.
Ex-post evaluation	Evaluation to assess longer-term impact, sustainability, and learning taking place three to five years after closure of Fund-financed projects.
Ethics and Finance Committee	Provision of advice to the Board on issues of conflict of interest, ethics, finance, and audit. The committee provides oversight to the Fund's evaluation function.
Evaluand	The target of an evaluation. The thing being evaluated. In the context of the Fund, it may be a project, programme, theme, strategy, policy, funding instrument, the Fund itself, and so on.
Final Evaluation	Evaluation by an independent evaluator chosen by the IE to provide evaluative evidence covering the entire intervention. It measures the overall impact, effectiveness, efficiency, sustainability, replicability, scale-up, and lessons learned of a Fund-financed project. These evaluations shall be prepared and submitted to the EFC through the secretariat within nine months after project completion.
Front-line adapters	Intended beneficiaries and potential community-level stakeholders of CCA projects. The term acknowledges that inhabitants of communities in partnered countries are already responding and adapting to climate impacts, and that any Fund project is a supplement to those local efforts.
Implementing Entity	The national, regional, and multilateral institutions accredited by the Board to receive direct financial transfers from the Fund for adaptation projects and programmes.
Independent evaluations	Independent evaluations are carried out by individuals and entities that are independent from those responsible for the design and implementation of the intervention and having no past operational involvement or other conflict of interest in the interventions being evaluated. They are conducted by external consultants, personnel from the AF-TERG or an IE's own independent evaluation office. Independent evaluations provide objectivity and/or targeted expertise. Independent evaluations serve primarily an accountability function but can also contribute to learning.
Internal entity(ies) of the Fund	An entity directly inside the Fund structure and subject to its Board. These include the Board itself, all committees, the secretariat, the AF-TERG, and the AP.

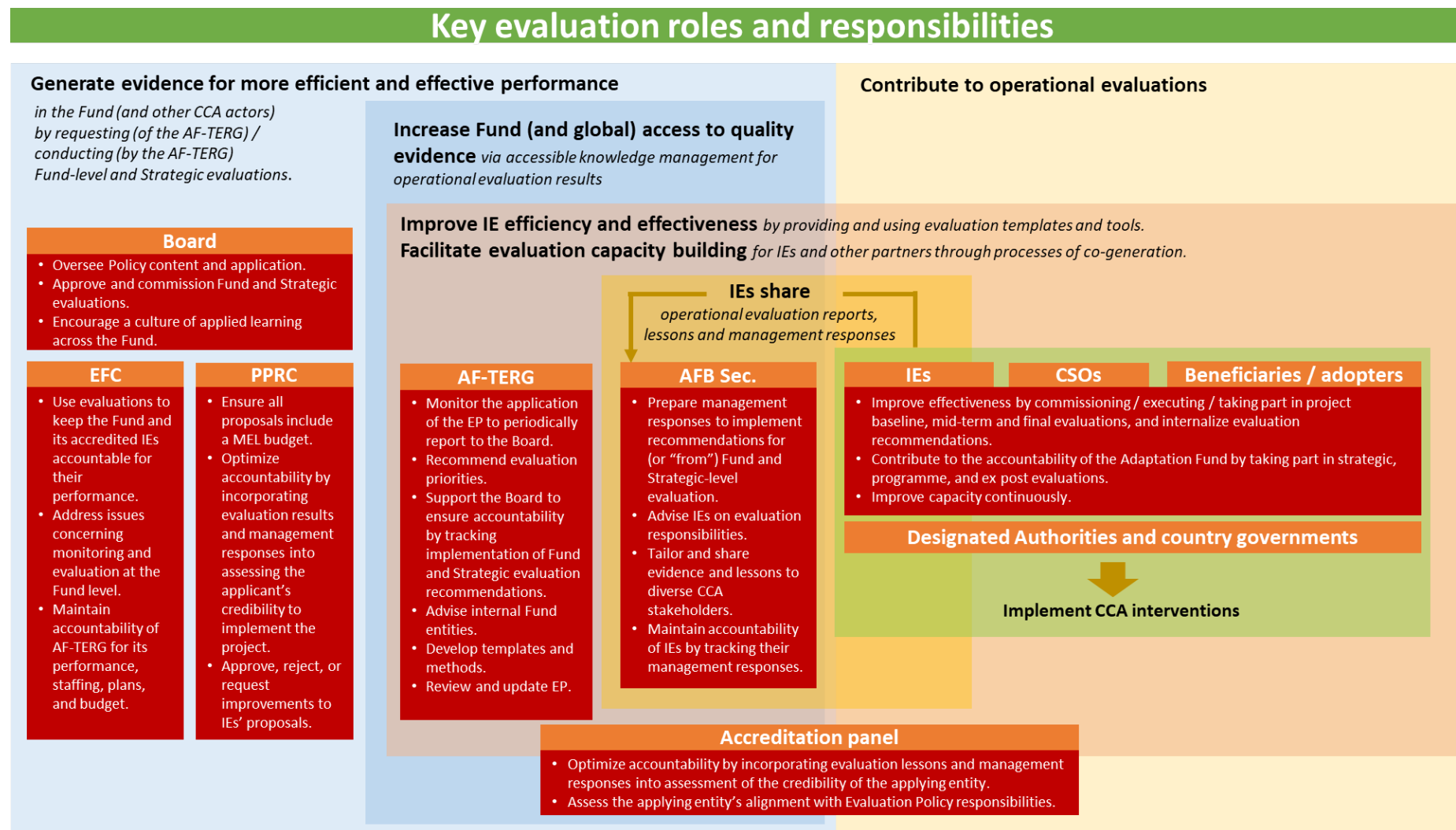
Knowledge management	The process by which the Fund acts as a key institution generating, managing, and sharing knowledge in adaptation and climate finance, and facilitating the access and use of that knowledge by other stakeholders.
Management response	Evaluations presented by the AF-TERG to the Board will have a management response from the secretariat expressing the views of management regarding the evaluation.
Medium-Term Strategy	The Fund's Medium-Term Strategy (2018-2022) updates and refines the Fund's niche to better serve the evolving needs of Parties to the UNFCCC. Towards this end, the Fund's vision, goal, and impact are derived from the Paris Agreement (especially Articles 7, 9, and 11), the 2030 Agenda for Sustainable Development (especially SDG 13.1), and their implied theory of change.
Mid-term Evaluation	Evaluation by an independent evaluator chosen by the IE to provide evaluative evidence covering the initial outputs and results of Fund-financed projects with three or more years of implementation. These evaluations shall be submitted to the secretariat no later than six months after the midpoint of the project.
Mid-term Review	The Mid-term Review (MTR) of the MTS aims to track implementation, identify progress, and suggest course correction as needed (AF-TERG, 2021, p. 3).
Monitoring	The Fund regards monitoring as an ongoing assessment of programme, project, and/or corporate strategy progress towards the achievement of expected results and outputs, focusing on process, effectiveness, and efficiency. It recognizes that monitoring is an essential part of the learning, adaptive management, and accountability system and that collaboration is essential between those responsible for evaluation and those responsible for monitoring.
Multilateral Implementing Entity	Multilateral institutions and regional development banks invited by the Board that meet the fiduciary standards and demonstrate commitment and ability to comply with, as a minimum, the ESP and the GP. They will bear full responsibility for the overall management of projects and programmes financed by the Fund, and will bear all financial, monitoring, and reporting responsibilities.
National Designated Authority	<p>Designated by a Party to represent the government of such Party in its relations with the Board and its secretariat. The DA acts as an officer within the Party's government administration. The communication to the secretariat is made in writing and signed by a minister, an authority at Cabinet level, or the Ambassador of the Party.</p> <p>The main responsibility of the DA is the endorsement on behalf of the national government of: (i) accreditation applications as NIEs submitted by national entities; (ii) accreditation applications as regional or subregional IEs submitted by regional or subregional entities; and (iii) projects and programmes proposed by the IEs, either national, regional, subregional, or multilateral.</p>

National Implementing Entity	Nominated by the Parties, recognized by the Board as meeting the fiduciary standards and demonstrating the ability to comply with, as a minimum, the ESP and the GP. It will bear the full responsibility for the overall management of projects and programmes financed by the Fund, as well as financial, monitoring, and reporting responsibilities.
Project and Programme Review Committee	Assists the Board in tasks related to project/programme review in accordance with the OPG for Parties to access resources of the Fund and for providing recommendations and advice to the Board thereon.
Real-time/near real-time evaluation	Real-time evaluation refers to the incorporation of routine, user-friendly measures and tracking mechanisms that provide rapid, real-time feedback to project decision makers to respond to a project's unfolding environment and consequences (Patton, 2006; Gregorowski and Bours, 2020, 2022). It recognizes that how best to deliver results may be uncertain, requiring iterative decision-making. Reference to "near" real time recognizes that a variety of approaches will have cyclical, instead of continuous, data collection and application.
Recommendation	Proposals aimed at enhancing the effectiveness, quality, or efficiency of a development intervention. Recommendations from the AF-TERG evaluations should be presented to the Board for appropriate follow-up of management response and action plan.
Review	Assessment of performance of an intervention, periodically or ad hoc.
Results-Based Management	A framework that includes monitoring the efficiency and effectiveness of the Fund, or process monitoring that helps the Board track efficiency and effectiveness based on the set indicators and targets.
Regional Implementing Entity	A nominated group of Parties to bear full responsibility for overall management of the projects and programmes financed by the Fund, as well as all financial, monitoring, and reporting responsibilities.
Self-conducted evaluations	An evaluation conducted by personnel within the management or operational structure of the entity being evaluated and which may include other stakeholders. Self-conducted evaluation is recommended for formative evaluations (for refining the project/initiative) when relatively rapid and/or continuous learning is required to optimize implementation effectiveness.
Semi-independent evaluations	An evaluation whose team combines an independent evaluator and personnel within the management or operational structure of the entity being evaluated. The team may include other stakeholders. Semi-independent evaluations may optimize the learning benefits of combining technical or evaluation expertise with insiders' intimate knowledge of the context, history, and stakeholders of the evaluand. Semi-independent evaluations may be useful for generating deeper formative lessons to inform decisions around an initiative's design and reforms, such as MTRs.
Study	Detailed investigation and analysis of a subject or situation that is not, itself, an evaluation.



Strategic Results Framework	Description of Fund level, goals, expected impact, outcomes, and outputs, as well as indicators and targets (amended in 2019).
Theory of change	A method to explain how given intervention(s) are expected to lead to a specific development change, drawing on a causal analysis based on available evidence. It helps guide development of sound and evidence-based programme strategies, with assumptions and risks clearly identified and analysed (United Nations Development Assistance Framework Companion Guidance).
Thematic evaluation	Evaluation of a series of interventions, all of which address a specific theme or cover specific sectors, while cutting across countries, regions, and sectors or themes. Thematic evaluations could focus on a specific or cross-cutting theme, a sector, or projects in a geographic region, or type of country context (such as Small Island Developing States or Least Developed Countries). Topics and themes may stem from opportunities to generate lessons that contribute to fulfilling the Fund's mission and goal. These may be identified from germane lessons from previous evaluations; observations by internal Fund entities; collaborations with IEs or other climate funds; themes emerging from international climate conferences; and collaborations in support of the Paris Agreement's global stocktake of CCA progress, among others.
Technical Evaluation Reference Group of the Adaptation Fund	An independent evaluation advisory group, accountable to the Board, established to ensure the independent implementation of the Fund's EF.

## Annex B. Summary of key evaluation roles and responsibilities



## Annex C. Bibliography

- Adaptation Fund (2011). *Results Framework and Baseline Guidance – Project-level*. Washington, D.C. p. 22. Available at: <https://www.adaptation-fund.org/document/results-framework-and-baseline-guidance-project-level/>
- \_\_\_\_\_ (2012). *Evaluation Framework*. Available at: <https://www.adaptation-fund.org/document/evaluation-framework-4/>
- \_\_\_\_\_ (2013). *Open Information Policy*. p. 2. Available at: <https://www.adaptation-fund.org/document/open-information-policy-adopted-in-july-2013/>
- \_\_\_\_\_ (2017). *Medium-Term Strategy: 2018 – 2022*. Available at: <https://www.adaptation-fund.org/document/medium-term-strategy-2018-2022/>
- \_\_\_\_\_ (2018). *Implications of the Establishment of the Fund's Evaluation Function*. Document AFB/EFC.22/3. Paragraph 18a, 24 and 26. Available at: <https://www.adaptation-fund.org/document/implications-establishment-funds-evaluation-function/>
- \_\_\_\_\_ (2019). *Strategic Results Framework* (Amended in March 2019). Available at: <https://www.adaptation-fund.org/document/medium-term-strategy-2018-2022/>
- AF-TERG (2021). *The mid-term review of the Medium-term Strategy of the Adaptation Fund*. Document AFB/EFC.28/7. Washington, D.C. Available at: <https://www.adaptation-fund.org/document/mid-term-review-of-the-medium-term-strategy-of-the-adaptation-fund/>
- Buchanan-Smith, Margi, and Susanna Morrison-Métois (2021). From Real-Time Evaluation to Real-Time Learning: Exploring new approaches from the COVID-19 response. ALNAP paper. p. 8. London: ODI/ALNAP. Available at: <https://www.alnap.org/help-library/from-real-time-evaluation-to-real-time-learning>
- Gregorowski, Robbie, and Dennis Bours (2020), *Adaptation Fund Innovative Climate Change Adaptation (CCA) Monitoring, Evaluation and Learning (MEL) – Final Report*. Washington, D.C. [internal study].
- \_\_\_\_\_ (2022). Enabling systems innovation in climate change adaptation: exploring the role for MEL. In: Uitto J.I., and G. Batra, eds. *Transformational Change for People and the Planet*. Sustainable Development Goals Series. Springer, Cham. Available at: [https://link.springer.com/chapter/10.1007/978-3-030-78853-7\\_11](https://link.springer.com/chapter/10.1007/978-3-030-78853-7_11)
- Intergovernmental Panel on Climate Change (2021). *Climate Change 2021: The Physical Science Basis – The Working Group I contribution to the Sixth Assessment Report*. Geneva. Available at: <https://www.ipcc.ch/report/sixth-assessment-report-working-group-i/>
- \_\_\_\_\_ (2022). *Climate Change 2022: Impacts, Adaptation and Vulnerability – The Working Group II contribution to the Sixth Assessment Report*. Geneva. Available at: <https://www.ipcc.ch/report/sixth-assessment-report-working-group-ii/>
- Organisation for Economic Co-operation and Development and Development Assistance Committee (2019). *Better Criteria for Better Evaluation – Revised Evaluation Criteria Definitions and Principles for Use*. Paris. Available at: <https://www.oecd.org/dac/evaluation/revised-evaluation-criteria-dec-2019.pdf>

\_\_\_\_\_ (2020). *Evaluation criteria frequently asked questions*. Paris. Available at: <https://www.oecd.org/dac/evaluation/eval-criteria-faq.htm>

Patton, Michael Quinn (2006). Evaluation for the way we work. *Nonprofit Quarterly*, vol. 13, No.1, pp. 28–33. Available at: <https://nonprofitquarterly.org/evaluation-for-the-way-we-work/>

\_\_\_\_\_ (2021). Evaluation criteria for evaluating transformation: implications for the coronavirus pandemic and the global climate emergency. *American Journal of Evaluation*, vol. 42, No. 1, pp. 54–89.

United Nations, Evaluation Group (2016). *Norms and Standards for Evaluation*. United Nations publication. p. 10. Available at: <http://www.unevaluation.org/document/detail/1914>

United Nations Framework Convention on Climate Change (2015). Paris Agreement. United Nations publication. Available at: <https://unfccc.int/process-and-meetings/the-paris-agreement/the-paris-agreement>

United Nations, General Assembly (2015). Resolution 69/237. Building capacity for the evaluation of development activities at the country level. United Nations publication. Available at: <https://undocs.org/Home/Mobile?FinalSymbol=A%2FRES%2F69%2F237>