



Technical Evaluation
Reference Group
ADAPTATION FUND

Discussing ex post evaluations with the AF-TERG

Presented by: Caroline Holo, AF-TERG data analyst
Date: September 29, 2022



Introduction to the AF-TERG

- Technical Evaluation Reference Group of the Adaptation Fund
- Established in 2019
- Modeled after the TERG of the Global Fund
- 3 functions
 - Evaluation*
 - Advisory*
 - Oversight*



Two key work elements of the AF-TERG

**Adaptation Fund
Evaluation Policy**

**Ex post evaluations of
Adaptation Fund projects**

Agenda

Objectives of today's presentation

AF-TERG ex post evaluations

1

Introducing the work on ex post evaluations

Understanding the value of ex post evaluations and early lessons from pilots

Surveying the room



Who has a **completed Adaptation Fund project**?



Who has an Adaptation Fund **project nearing completion**?



Who has ever gone back to a project **after its completion**? What did you learn?

AF-TERG ex post evaluations

- Work on ex post evaluations started in 2021
- Objective: learn from projects that have been completed 3-5 years ago
- New methodology developed : focus on sustainability and resilience

1 Have the project outcomes/impact(s) been sustained since project completion?

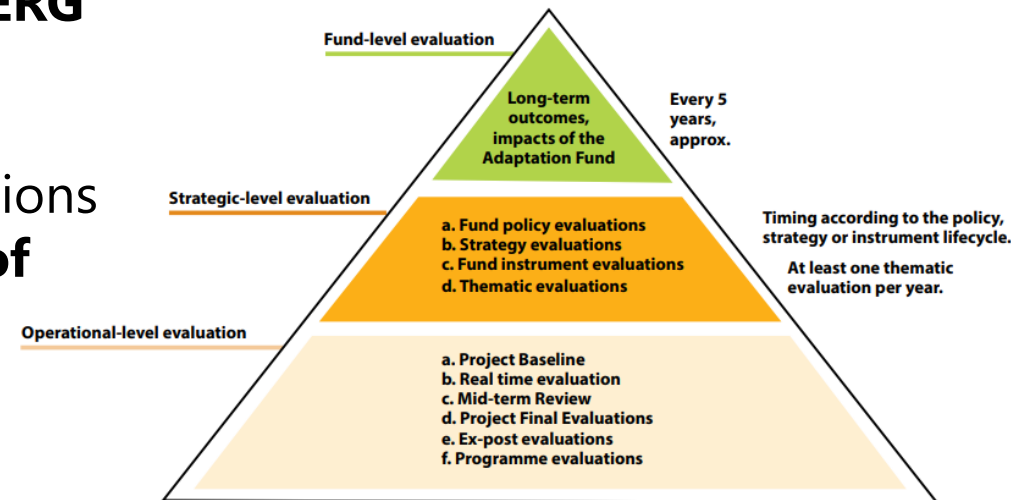
2 Are the sustained project outcomes/impact(s) climate-resilient?

- Methodology tested on two pilot Adaptation Fund projects:
 - **Samoa** (2013-2018, Coastal Management/DRR)
 - **Ecuador** (2011-2018, Food security)



Ex post evaluations and the new Evaluation Policy

- Ex-post evaluations are part of **operational-level evaluations**, a new type of evaluations encouraged by the Evaluation Policy
- The new Evaluation Policy **may mandate the conduction of ex post evaluations**, as required by the Board.
- Ex-post evaluations are to be **budgeted by the AF-TERG** under the Fund's evaluation function.
- IEs whose projects will be selected for ex-post evaluations will be **informed within three months of approval of the selection**.



Value of ex post evaluations

- Look at some aspects of your projects and aims to tell what remains/ is sustained and why?

Samoa

Evaluation focused on coastal protection infrastructure e.g. seawalls



e.g. seawalls sustained because of high ownership and planned maintenance

Ecuador

Evaluation focused on water infrastructure and home gardens



e.g. products of orchards not relevant enough for food security

Conditions of sustainability

Ownership

Capacity

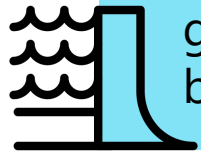
Resources

Partnerships

Value of ex post evaluations

- Aims to tell how your intervention demonstrates **characteristics of resilience**

Samoa



e.g. examples of dynamism (or flexibility for communities to adapt), which are characteristics of resilience, as people grew a vegetated communal space behind one of the seawalls

Ecuador

e.g. some of the reservoirs built had a sufficient scale, which is a characteristic of resilience, *i.e.* they provided enough storage to ensure better water security and food production



- Aims to situate the outcomes evaluated at ex post on a resilience typology
- Aims to tell you whether **vulnerability to shocks** addressed by the project has decreased



Fieldwork pictures



Samoa: Vaiala seawall – no visible defects (landside view, left; seaside view, right) (2021)



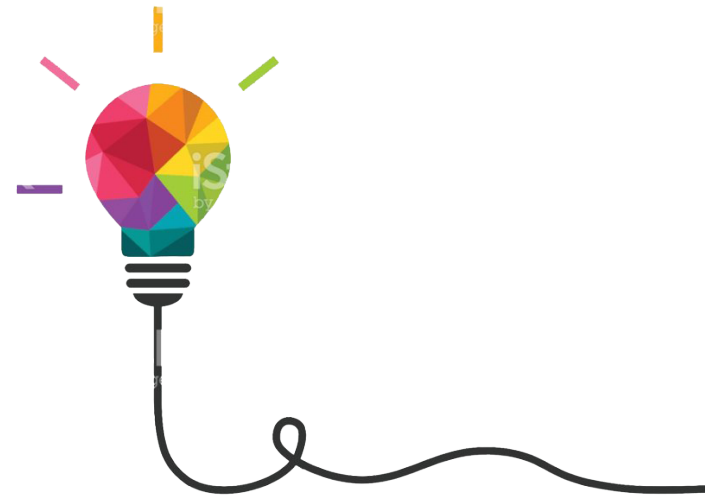
Samoa: Salimu/ Musumusu rockwall – rocks are crumbling into wetlands and water is collecting on the road (2021)



Ecuador: Rehabilitated reservoirs in Cochapata (2022)

Value of ex post evaluations

- Ex post evaluations are about **learning !**
- Importance to **communicate progress on adaptation** under the Paris Agreement
- Hope to **understand better what works and does not work in adaptation**; or at least what is sustainable or makes an intervention sustainable in the long-term
- Ex post evaluations can also help highlight **examples of maladaptation**
- Could help countries, IEs, and the Fund **design project better**



Lessons from the first pilots

Both pilots highlighted important lessons about ex post evaluations

- Co-creation principle and involvement of country stakeholder
- Local stakeholder buy-in
- Understanding resilience
- Challenges of other risks



Ex post training with Samoan stakeholders

Lessons from the first pilots

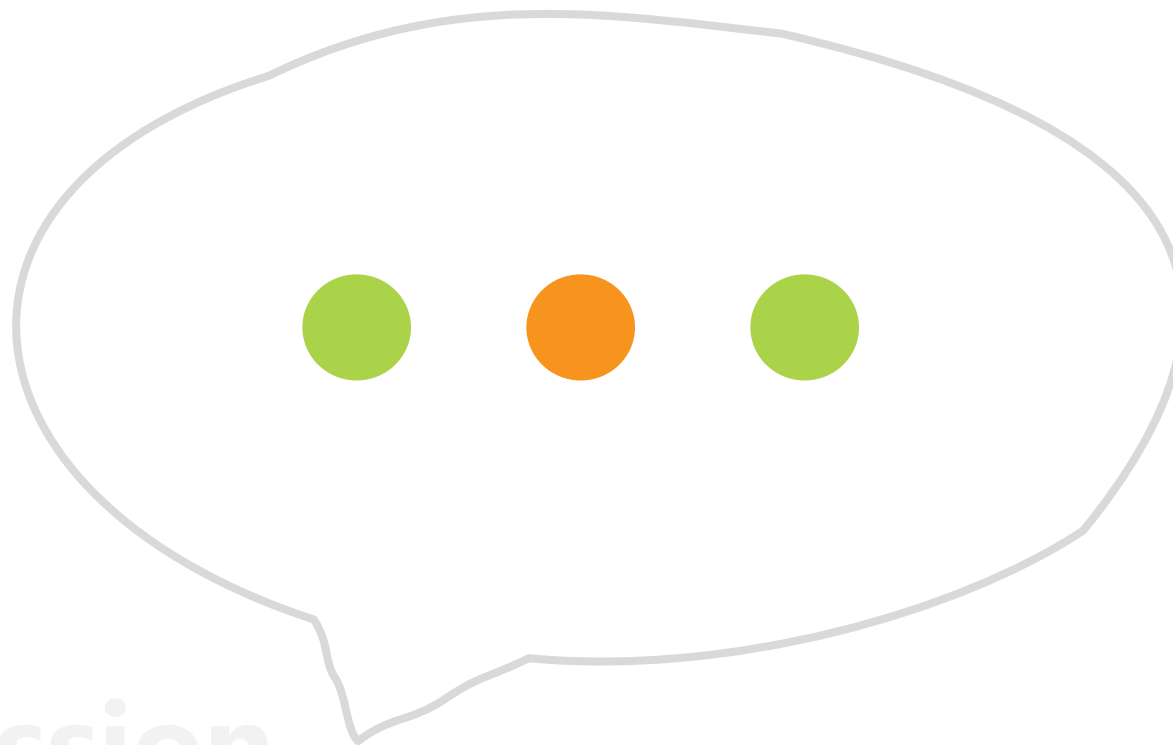
Both pilots highlighted data challenges to conduct ex post evaluations

- Data availability
- Data quality

To have a good ex post evaluation, you need good data!

To learn, you need good data!

Comments?
Questions?



discussion



Technical Evaluation
Reference Group
ADAPTATION FUND



Debbie



Mutizwa



Susanne



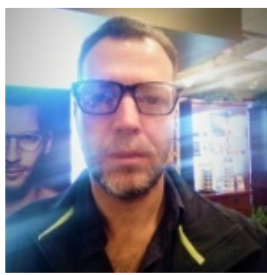
Dennis



Caroline



Claudio



Carroll

www.adaptation-fund.org/about/evaluation



Thank you

Contact info:

af-terg-sec@adaptation-fund.org

