

# Communicating adaptation results and impact to reach key audiences

Mandy Barnett  
Chief Director: Adaptation Policy and Resourcing Division  
SANBI  
AF NIE Seminar, 2022





## **Why and how are we communicating?**

- Who is sending and why?
- Who is receiving?
- What are the key messages?
- What platforms?

## **Enabling tools:**

- Project logos – project partners can connect communication
- Branding guidelines and strategies
- High resolution imagery

## **Making the case experience:**

- Communicate with messages of 'hope of gain', not 'doom and gloom'
- Connect with a 'heart' message, of a better future
- Align messaging with country priorities for social and economic development

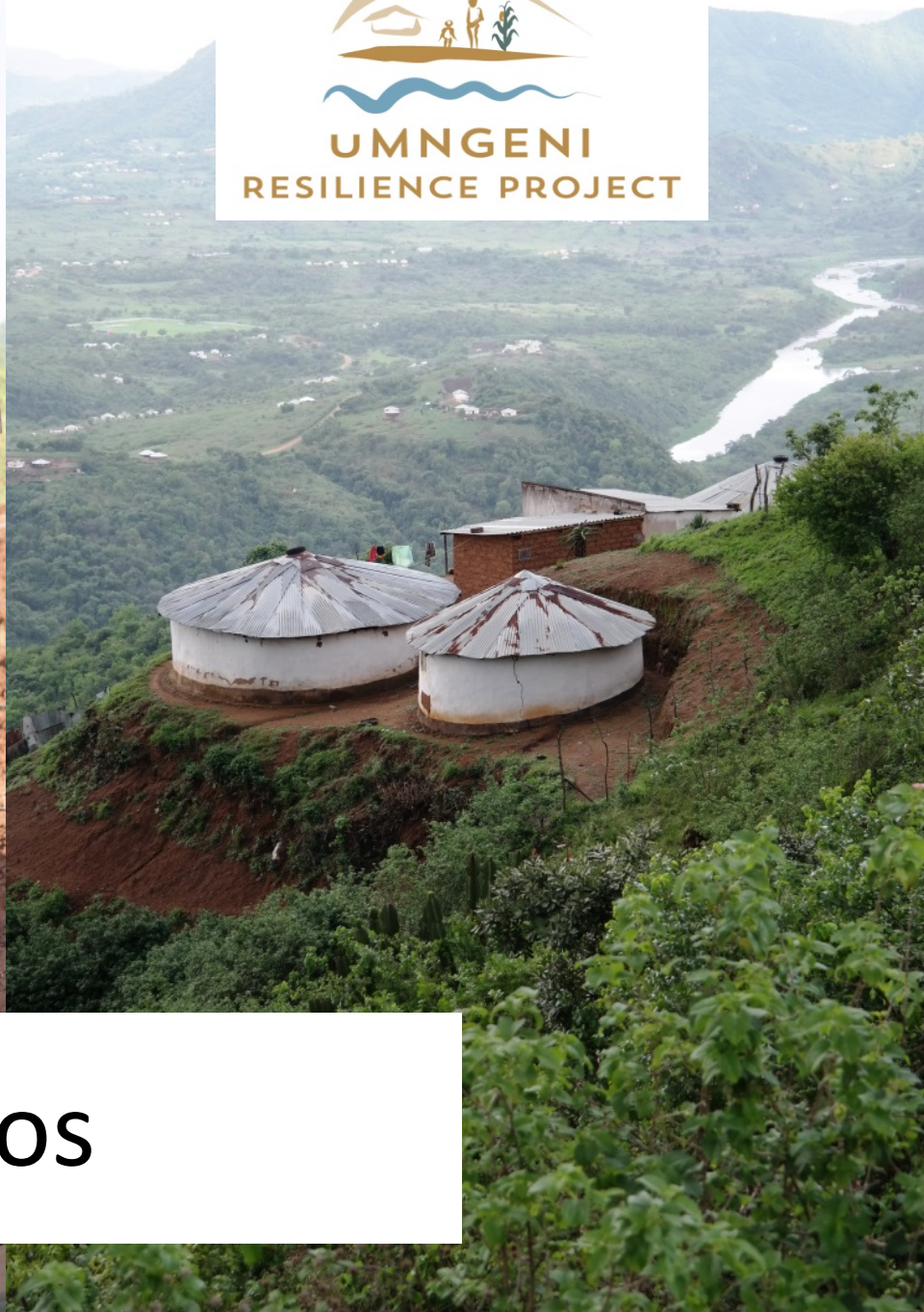


**SMALL  
GRANTS  
FACILITY**

*Responding to climate change*



**UMNGENI  
RESILIENCE PROJECT**



**Project logos**



**COPING WITH LIFE IN A TURBULENT CLIMATE:**  
**An uMngeni Catchment pilot project**

Many people living within both urban and rural areas of ID District face the small towns of Woodford, Richmond and Crookes of 'veteran-made' and Howick, have already had to cope with droughts, wet waves and wind-blown dust. These areas are often hardest hit when more natural disasters strike.

Climate change is going to make these kinds of disasters happen more often, making life for vulnerable communities even tougher. In fact, summer rains in Crookes have fallen, and rain can flood more slowly. Dry spells between periods of rain will strike more often and be fiercer. Droughts will hit for a while, but the wildfires that come afterwards will damage grasslands.

This is why the uMngeni Resilience Project, which is working with small scale farmers to help them cope with these extreme weather has been set up in the uMngeni's lower, wetter mountains.

The project is using four pilot sites to show different ways to prepare for changing weather patterns, so they are better able to deal with a disaster. The sites are in Howick, a high-density settlement of the city and the wet areas of Richmond, Bethlehem and Langa. Warning systems will really communities when possible investments in infrastructure such as roads and buildings will more secure, and climate-smart farming techniques will protect water by bringing together conditions and local knowledge, and use of the needs of women and other vulnerable groups. People may have other people and people who are ill.

The uMngeni Resilience Project is helping these communities through the effects of living with more extreme weather encouraged to share the lessons they learn as well as with the world. This is a saving time to learn from one another, and help areas of South Africa and the world have vulnerable communities more resilient to what we can make sure.

The project is funded by the Adaptation Fund and the city of ID (R54.75 million).

For more information, visit [climatefund.co.za](http://climatefund.co.za)

5

## COPING WITH LIFE IN A TURBULENT CLIMATE:

**An uMngeni Catchment pilot project**

**SANBI**  
 SOUTH AFRICAN NATIONAL BIODIVERSITY  
 FOUNDATION

## Community Adaptation Small Grants Facility project: An Overview

**SANBI** Biodiversity for Life  
South African National Biodiversity Institute

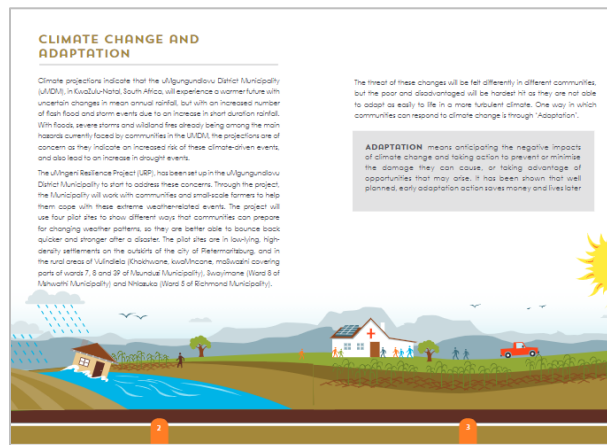
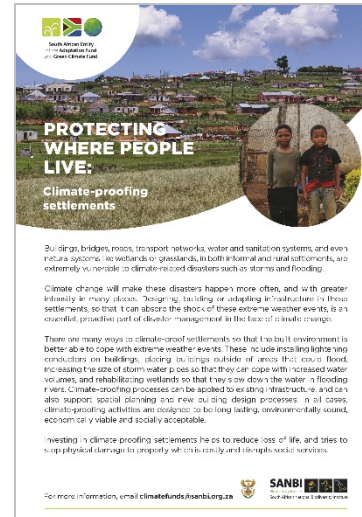
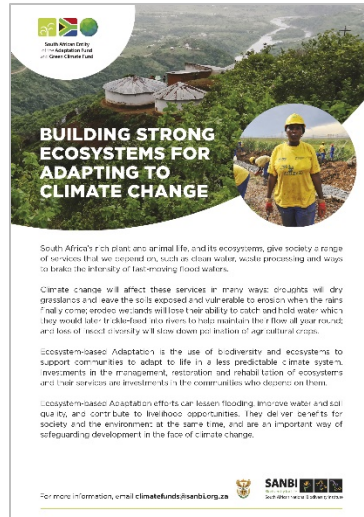
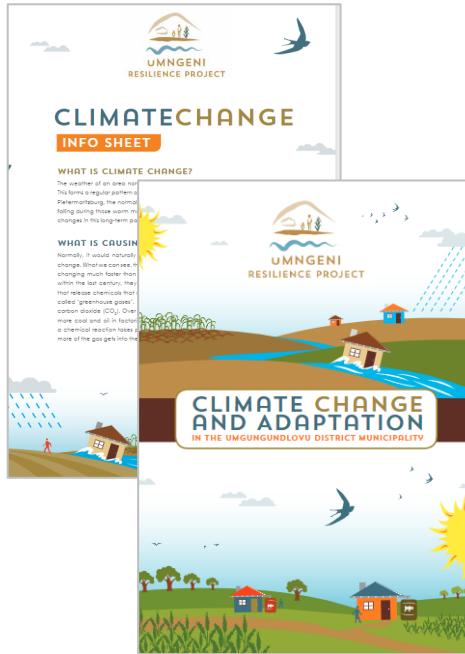
The Community Adaptation Small Grants Facility (CASGF) is a R20m four-year community-based adaptation project. It aims to ensure that vulnerable, rural communities in two project target areas in South Africa have reduced vulnerability and increased resilience to the anticipated impacts of climate variability and change.

Namakwa District,  
Northern Cape





# Demystifying climate change





The image displays two versions of a maritime emergency flowchart, one in Dutch and one in English, set against a nautical-themed background with ships, a compass, and a lifebuoy.

**Top Flowchart (Dutch): Navigatie**

- START** (Start)
- LOCATIE VAN VAARUIT ZIJN** (Location of vessel)
  - Op het?** (On the?)
    - Ja** (Yes) → **Locatie aan boord?** (Location on board?)
      - Ja** (Yes) → **Kontakt met de kust of met ander** (Contact with the coast or with another)
      - Nei** (No) → **Wat zit u onder de hand met de kust en de vaartuig** (What is under the hand with the coast and the vessel?)
    - Nei** (No) → **Leer plaats van de vaartuig op de kaart** (Learn the location of the vessel on the map)
- LOCATIE VAN DE ZEE** (Location of the sea)
  - Chut at sea?**
    - Ja** (Yes) → **Locatie aan boord?** (Location on board?)
      - Ja** (Yes) → **Contact SSO** (Contact SSO)
      - Nei** (No) → **Alert other vessels with satellite and vaartuig** (Alert other vessels with satellite and vessel)
    - Nei** (No) → **Learn from local boats and go to sea with them**
  - Locatie op land?** (Location on land?)
    - Ja** (Yes) → **Press ALE RT** → **SSO guide-fishers back to shore**
    - Nei** (No) → **Make noise with satellite and vaartuig. Make noise with emergency petrol tank. Shoot flares to draw attention to your vessel**
- RECHTELING VAARUIT** (Directly ahead)
  - One fisher sits at front of vessel**
    - Elasticiteit?** (Elasticity?)
      - Ja** (Yes) → **Stop, throw out anchor and then damage** → **Contact SSO for assistance if vessel is damaged**
      - Nei** (No) → **Proceed cautiously**

**Bottom Flowchart (English): Navigational**

- START** (Start)
- LOCATIE VAN VAARUIT ZIJN** (Location of vessel)
  - On the?**
    - Yes** → **Location on board?**
      - Yes** → **Contact with the coast or with another**
      - No** → **What is under the hand with the coast and the vessel?**
    - No** → **Learn the location of the vessel on the map**
  - LOCATIE VAN DE ZEE** (Location of the sea)
    - Chut at sea?**
      - Yes** → **Location on board?**
        - Yes** → **Contact SSO**
        - No** → **Alert other vessels with satellite and vaartuig**
      - No** → **Learn from local boats and go to sea with them**
    - Locatie op land?**
      - Yes** → **Press ALE RT** → **SSO guide-fishers back to shore**
      - No** → **Make noise with satellite and vaartuig. Make noise with emergency petrol tank. Shoot flares to draw attention to your vessel**
  - RECHTELING VAARUIT**
    - One fisher sits at front of vessel**
      - Elasticiteit?**
        - Yes** → **Stop, throw out anchor and then damage** → **Contact SSO for assistance if vessel is damaged**
        - No** → **Proceed cautiously**

**Logos:** Coastal Communities Foundation (Coastal Communities Foundation logo) and Coastal Communities Foundation (Coastal Communities Foundation logo).

[illegible]

**Plants and vegetation can help fight erosion.**

**uMDM Climate Change Adaptation Mainstreaming**  
**Laundré K. Erasmus**

**What is soil erosion and what causes it?**  
**Soil erosion is the process where water or wind removes the top soil.**

**Factors and causes of soil erosion:**

- Human and natural activity removes vegetation covering the soil.
- It creates the conditions where the top soil can be washed or blown away.
- Exposure of soil and exposed bedrocks leads to wind-blown and shallow and rain made banks less stable.
- Climate change also increases erosion through an increase in the frequency and severity of storms.
- As erosion continues more soil is lost.
- Without repair, the land is unsuitable for new vegetation.

**The more eroded a landscape is, the greater the potential for more erosion. So it's important to control erosion and rehabilitate areas that have lost only high levels of erosion. There are many low-cost ways to manage erosion. Vegetation is critical in stabilising eroded areas and protecting landscapes.**

**The health of a "Climate Change Adaptation Toolkit" produced by the Integrated Climate Resilience Toolkit is meant for decision-making and adaptation outcomes are included in planning and development projects by local government.**

**It is an outcome of the Integrated Resilience Project that the uMDM is sponsoring to build the capacity of municipalities and officials to respond positively to the impacts of climate change.**

The Integrated Resilience Project is funded by the Adaptation Fund. The Integrated Resilience Project (IRP) is the funding body responsible for the overall project implementation, working with the University of Cape Town, the Department of Agriculture, Land and Environmental Sciences (DAS) (SARS) who are the SA Government's Lead Agency (SARS) at the National Government's Sustainable Development Goals (SDG) 13, 14, 15, 16, 17, 18, 19, 20, 21, 22, 23, 24, 25, 26, 27, 28, 29, 30, 31, 32, 33, 34, 35, 36, 37, 38, 39, 40, 41, 42, 43, 44, 45, 46, 47, 48, 49, 50, 51, 52, 53, 54, 55, 56, 57, 58, 59, 60, 61, 62, 63, 64, 65, 66, 67, 68, 69, 70, 71, 72, 73, 74, 75, 76, 77, 78, 79, 80, 81, 82, 83, 84, 85, 86, 87, 88, 89, 90, 91, 92, 93, 94, 95, 96, 97, 98, 99, 100.

For more information please refer to the full tender document, or contact us:

Website: [www.sars.gov.za](http://www.sars.gov.za)  
Email: [info@sars.gov.za](mailto:info@sars.gov.za)  
Tel: 011 897 4700 or 0800 844 911



# Case studies and policy briefs



**SMALL GRANTS FACILITY**  
Responding to climate change

**A New Approach to Enabling Local Responses to Climate Change:** Learning from the Community Adaptation Small Grants Facility project

Case Study 1



**SMALL GRANTS FACILITY**  
Responding to climate change

**Good Governance:** Oversight and compliance support mechanisms within the context of Enhanced Direct Access and Climate Change Adaptation

Case Study 2



**SMALL GRANTS FACILITY**  
Responding to climate change

**Adaptive Management:** Enhancing Direct Access to climate finance

Case Study 3



**SMALL GRANTS FACILITY**  
Responding to climate change

**Participatory Project Development for Small Grants:** Lessons from the Small Grants Facility project funded by the Adaptation Fund

Case Study 4



**SMALL GRANTS FACILITY**  
Responding to climate change

**Facilitating Agency Experiences:** The important role of Facilitating Agencies in

Case Study 5



**SMALL GRANTS FACILITY**  
Responding to climate change

**An Emerging Framework for Capacity Building:** Reflection and response as part of Community-Based Climate Change Adaptation

Case Study 6



**SMALL GRANTS FACILITY**  
Responding to climate change

**A Tale of Regional the Impl Commu Change**

Case Study 7

**Case Study 1: A New Approach to Enabling Local Responses to Climate Change: Learning from the Community Adaptation Small Grants Facility project** 9

**Citation**  
*Merrill, T., and Soal, S., 2021. A New Approach to Enabling Local Responses to Climate Change: Learning from the Community Adaptation Small Grants Facility project. Case Study 1. Small Grants Facility project. SouthSouthNorth.*

**Recommendation:**

The Community Adaptation Small Grants Facility project was funded by the Adaptation Fund, endorsed by the Department of Forestry, Fisheries and the Environment as the National Designated Authority, implemented by the South African National Biodiversity Institute as the National Implementing Entity, and executed by SouthSouthNorth as the Executing Entity. The project was locally supported by the Namakwa and Mopani District Municipalities and locally facilitated in the Districts by Conservation South Africa as the Namakwa Facilitating Agency and ChaiCe Trust as the Mopani Facilitating Agency. Civil society was represented in the project's governance structures by the Adaptation Network.



forestry, fisheries & the environment  
Department of Forestry, Fisheries and the Environment  
REPUBLIC OF SOUTH AFRICA



ADAPTATION FUND



**SANBI**  
Biodiversity for Life  
South African National Biodiversity Institute

**SOUTH SOUTH NORTH**  
TOWARDS CLIMATE RESILIENCE



**ChaiCe**  
trust



**CONSERVATION SOUTH AFRICA**  
Member of the CI Network



**THE ADAPTATION NETWORK**  
we're up to the climate challenge!





**SMALL GRANTS FACILITY**  
Responding to climate change

**Policy Brief:**  
Improving Enhanced Direct Access to Climate Finance





forestry, fisheries & the environment  
Department of Forestry, Fisheries and the Environment  
REPUBLIC OF SOUTH AFRICA



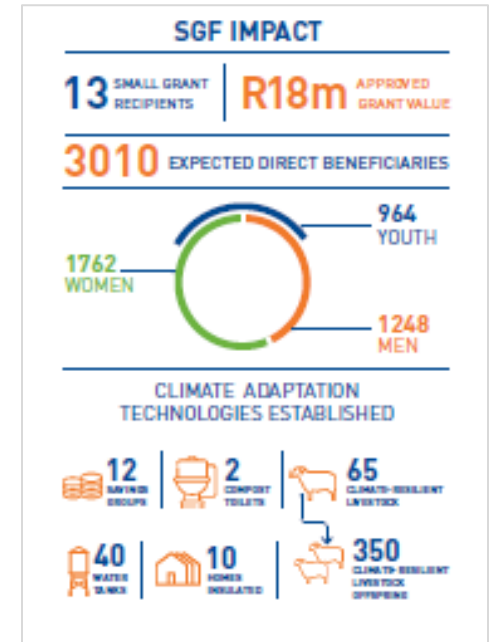
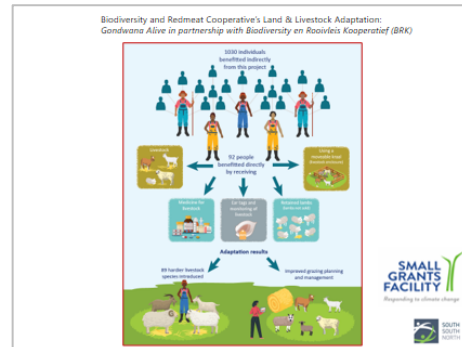
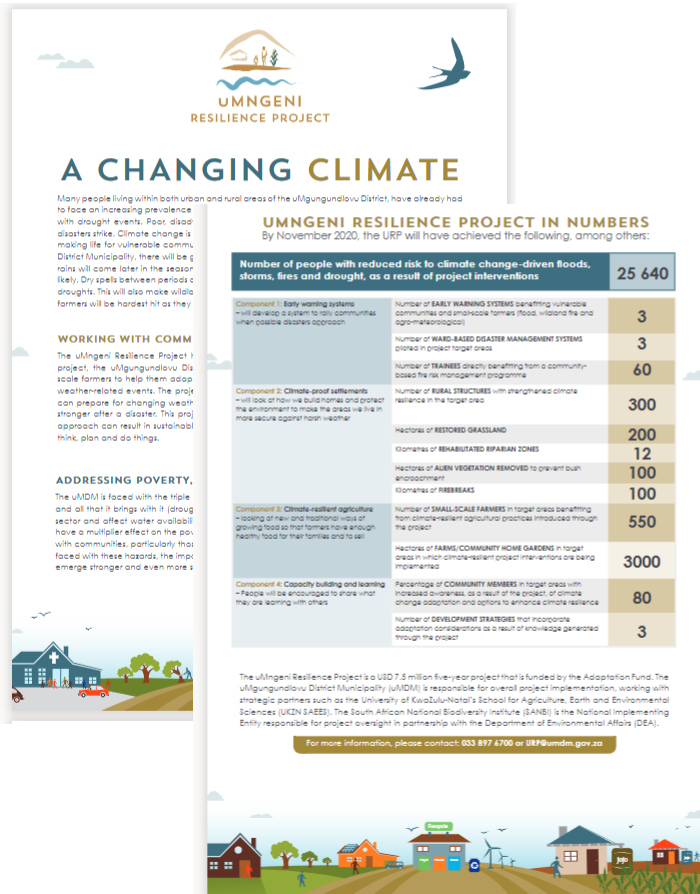
ADAPTATION FUND



**SANBI**  
Biodiversity for Life  
South African National Biodiversity Institute



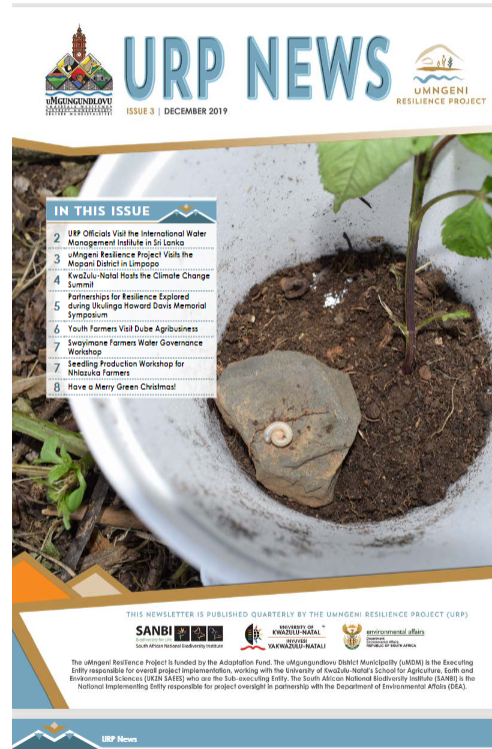
# Infographics





# Newsletters

Sent to a mailing list  
a few times per year,  
electronic and in  
hard copy





# eNews and media articles

## Community Adaptation Small Grants Facility project concludes with a proposal to establish a 'Locally Led Adaptation Grant Facility' in South Africa

By Mpfunzeni Tshindane (SANBI)

Date: 31 January 2022

The [Community Adaptation Small Grants Facility](#) project, which was funded by the Adaptation Fund, has concluded with the development of a 'Blueprint' for the establishment of a 'Locally Led Adaptation Grant Facility' in South Africa.

The project supported [twelve](#) community-based organisations to conceptualise and implement locally led



### Update on SANBI's Green Climate Fund Project Development Process

Author: Mpfunzeni Tshindane and Murendeni Nevari

Date: 09 April 2021

The South African National Biodiversity Institute (SANBI) is excited to provide a progress update on the development of a portfolio of climate change adaptation projects through its accreditation with the Green Climate Fund (GCF).

The GCF is a global Fund that was established under the UNFCCC (United Nations Framework Convention on Climate Change) to support the implementation of the Paris Agreement in developing countries. The GCF makes use of Accredited Entities to develop funding proposals and oversee, supervise, manage and monitor approved projects and programmes. SANBI is one of the [GCF's accredited entities in South Africa](#).

Following SANBI's accreditation in 2016, an extensive [project identification and development process](#) was undertaken working closely with the national Department of Forestry, Fisheries and the Environment (DFFE). This process led to an emerging portfolio of seven potential GCF projects for implementation in South Africa. The projects are currently at different stages of development.

To date, SANBI has submitted and received GCF feedback on a total of three first stage Concept Note project proposals. SANBI is engaging with project partners to address comments before resubmitting the Concept Notes and subsequently moving into full proposal development after approval by the Fund.

## WOMEN IN CLIMATE CHANGE CONTRIBUTES TO SUSTAINABLE DEVELOPMENT



18/03/22

Climate Change is a current lived reality for many communities around the world, in Africa and South Africa alike. We all seen, heard, read or even experienced the impact of Climate Change, especially as reporting on climate change events have gained prominence in the mainstream media and on social media platforms. Changes in weather patterns including severe drought, floods, increased temperatures and frequent fires is a consequence of climate change. The more recent example is the devastating floods that took place in KwaZulu Natal, Eastern Cape and North West provinces this year, which will take the people, households, communities and local economies in these areas years to rebuild.

Communities are grappling with finding effective and efficient approaches to mitigate and adapt to climate change, and there is a strong movement growing internationally and nationally to 'put women in their place' - next to their husbands. In seats at the decision making table, policy making table, planning table, budgeting table, monitoring and leading implementation, and so forth, at all levels, in all sectors and in all spheres of society. If we want to effectively address the Climate Change crisis, the participation of women at all levels of society and

ANIMAL OF THE WEEK

MEDIA STATEMENTS

CAPE E-NEWS

SCIENCE

NEWS

SKEP E-NEWS

SPEECHES

EVENTS

17/09/2022 - Eclectic art exhibition

24/09/2022 Open Air Workshop

25/11/2022 Tshwane Gospel

# Mail & Guardian

AFRICA'S BEST READ

Login

COVID-19 NEWS BUSINESS POLITICS ENVIRONMENT OPINION ARTS & CULTURE HEALTH EDUCATION PODCASTS WEBINARS PARTNERS

## Entrepreneur

Everything ventured everything gained  
Repave the road for new venture creation

UNIVERSITY OF THE  
WITWATERSRAND  
100th  
ANNIVERSARY

OPINION

WELCOME

## Sanbi projects help rural women manage the impacts of climate change

Marilyn Martin Mandy Barnett 12 Aug 2022



# Hard copies at places and spaces:

- Banners at offices and events
- Printed material – especially NB for community level
- Book contributions – e.g. Anniversary books

# Electronic media:

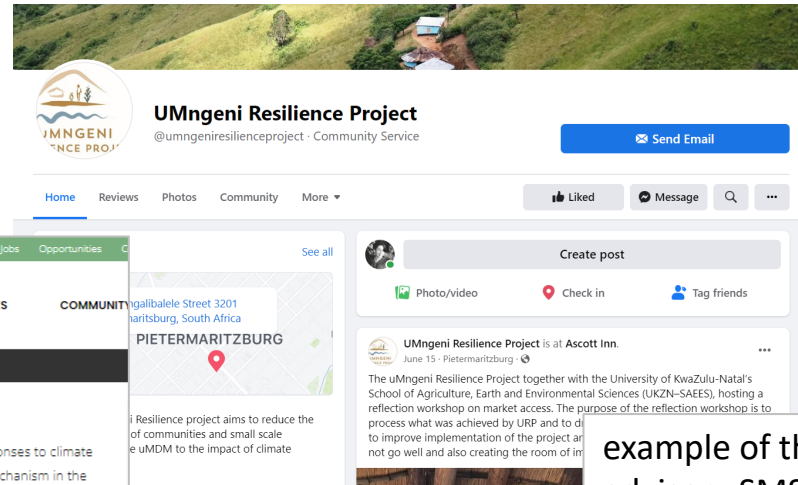
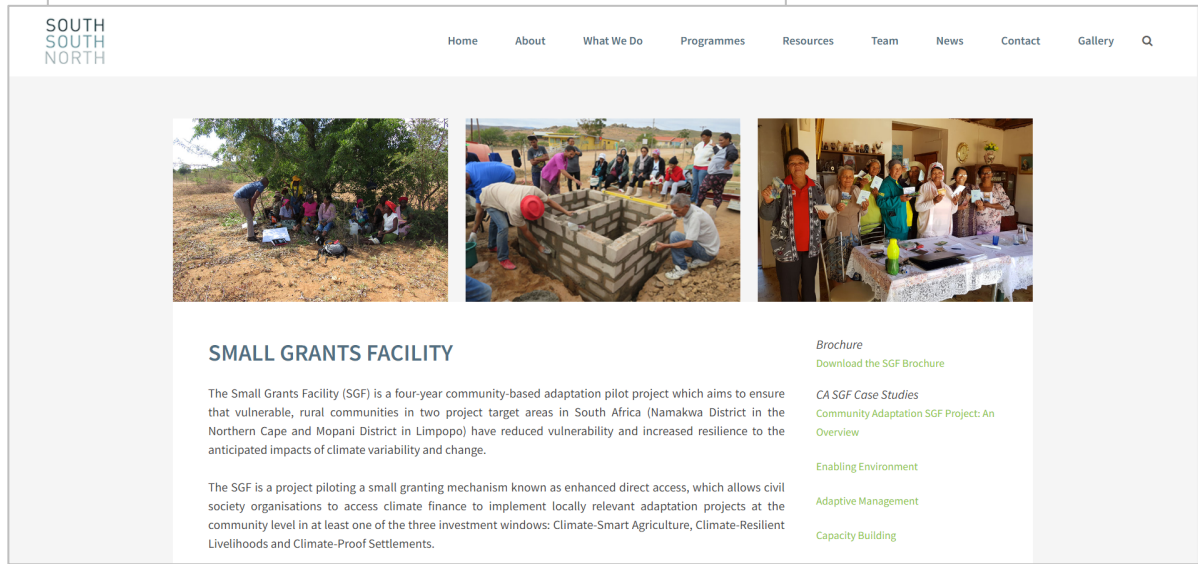
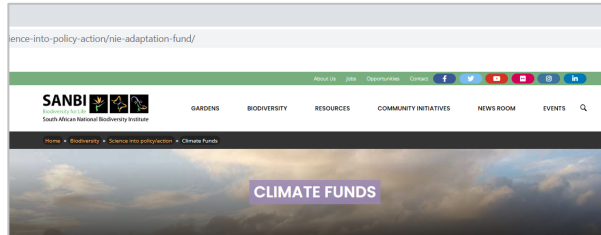
- Websites – facebook, twitter etc, enews articles
- Whatsapp groups – for local level connections and communication, distribution of EWS
- Mailing lists – enews, project engagements and job opportunities



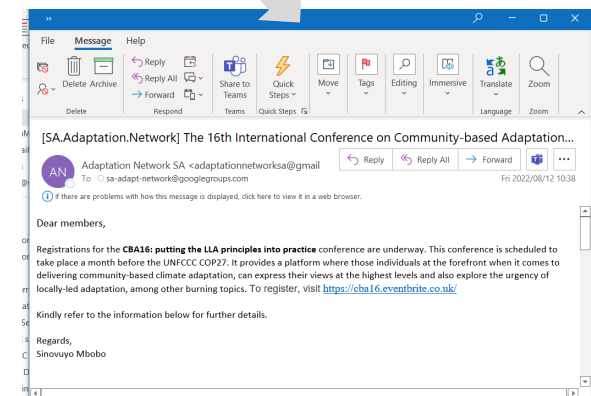
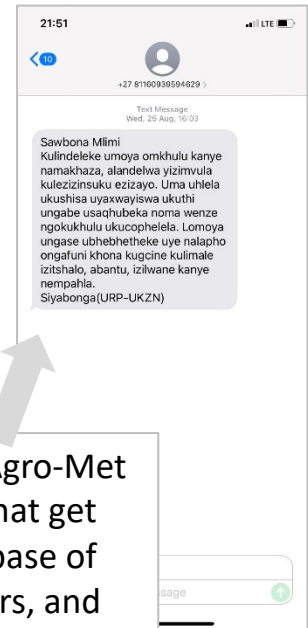


# Electronic distribution:

## Facebook, websites, mailing lists, whatsapp, twitter....



example of the Agro-Met advisory SMS's that get sent to the database of smallscale farmers, and Adaptation Network mailing list





Thank you