



Ex-post training (2022) - part 1

PART A - Introduction to ex-post evaluations, resilience and the piloting processes

Dear trainee,

This quick survey highlights the main points of today's session. It is an optional but recommended survey to verify your understanding of Part 1.

Thank you for your participation!

1] The OECD DAC defines ex post as an “evaluation of a development intervention after it has been completed”(2002). It adds that “the intention is to identify the factors of success or failure, to assess the sustainability of results and impacts, and to draw conclusions that may inform other interventions.”

This ex-post evaluation will focus on evaluating the sustainability of results, but it will also focus on another aspect that is critical in the context of climate change adaptation. Do you remember which one?

Solution:

The ex post framework focuses on aspects of both sustainability of outcomes and of climate resilience to answer the following **overarching** questions:

1 Have the project outcomes/impact(s) been sustained since project completion?

Why? If not, why not? What, if anything, emerged?

2 Are the sustained project outcomes/impact(s) climate-resilient?

How? In what ways? What does the outcome do in relation to climate disturbances?

All that is sustained may not be resilient to climate disturbances, and all that may be resilient to climate disturbances may not be sustained!



[Click to enlarge]

2] In the context of climate change adaptation, the ex post evaluation also considers two important additional lenses of analysis that are linked to sustainability and resilience. Do you remember which one?

1:

2:

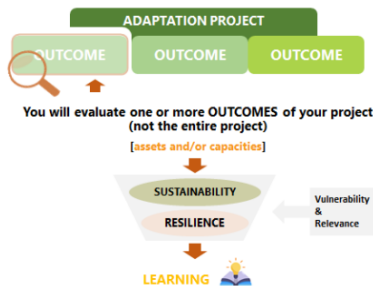
Solution:

*1: Vulnerability

*2: Relevance

Remember: in the context of climate change adaptation, if an outcome has been sustained, it is because it was valued or relevant to reducing vulnerability.

[Highlight after the star to see]



[Click to enlarge the AF-TERG ex post framework]

3] The sustainability framework developed by the AF-TERG is made of 4 components and requires the evaluator to first look at the likelihood of sustainability (desk research) before verifying the sustainability at ex post (fieldwork).

Please indicate which components should be analyzed to understand the likelihood of sustainability and which should be used to verify sustainability at ex post:

Likelihood of sustainability

- Context (backdrop of the strategy and results)
- Strategy (supporting sustainability throughout implementation)
- Conditions of sustainability
- Disturbances (endured by the outcome(s))

Verification of sustainability

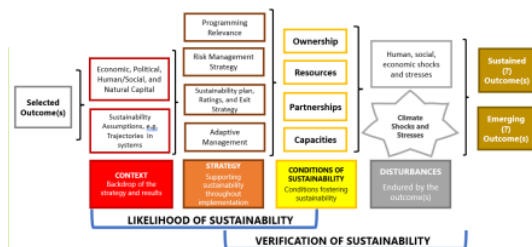
- Context (backdrop of the strategy and results)
- Strategy (supporting sustainability throughout implementation)
- Conditions of sustainability
- Disturbances (endured by the outcome(s))

Solution:

*Likelihood of sustainability : CONTEXT / STRATEGY / CONDITIONS

*Verification of sustainability: STRATEGY / CONDITIONS / DISTURBANCES

[Highlight after the star to see]



[Click to enlarge]

4] The sustainability framework developed by the AF-TERG is made of 4 components, each indicating topics to analyze.

Please match each topic of sustainability with its component.

Human, social, economic shocks and stresses

Component

Resources

Component

Economic, political, Human/Social, and Natural Capital

Component

Ownership

Component

Risk management and strategy

Component

Climate shocks and stresses

Component

Adaptive management

Component

Partnerships

Component

Programme relevance

Component

Sustainability assumptions e.g. trajectories in systems

Component

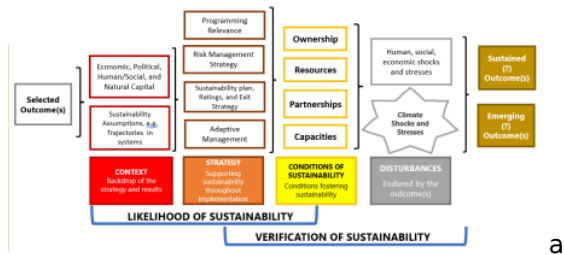
Capacities

Component

Sustainability plan, ratings, and exit strategy

Component

Solution:



[Click to enlarge]

5] IPCC (2014) defines resilience as “The capacity of social, economic, and environmental systems to cope with a hazardous event or trend or **disturbance**, responding or reorganizing in ways that maintain their essential **function**, identity, and **structure**, while also maintaining the capacity for adaptation, learning, and transformation.”

Resilience to the effects of climate change and related extreme weather events can be described as a high-level goal of climate change adaptation. Through adaptation, the structures and functions critical to life would be less affected by climate-related disturbances and/or these disturbances would be less impactful.

In order to understand the concept of resilience, please match the definitions with their concepts:

A literal physical asset (e.g. forest, storm wall) or a figurative asset like an institution or set of practices

- Disturbances
- Structures
- Functions

Acute shocks (e.g. a cyclone) or chronic stresses (e.g. sea level rise).

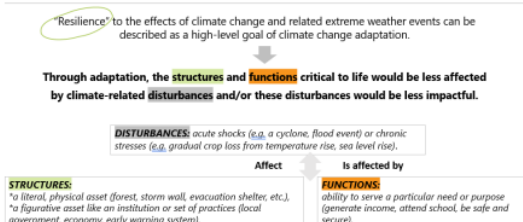
- Disturbances
- Structures
- Functions

Ability to serve a particular need or purpose (e.g. generate income,

- Disturbances
- Structures
- Functions

Solution:

Defining resilience in the context of CCA



[Click to enlarge]

6] The resilience analysis tool developed by the AF-TERG is made of five core different components.

Please guess the name of each component of the framework:

1: The stresses and shocks that the sustained outcomes address

Component

2: The structures and functions within human and natural systems - and their nexus - that affect and are affected by the project outcomes

Component

3: How assets and capacities are used

Component

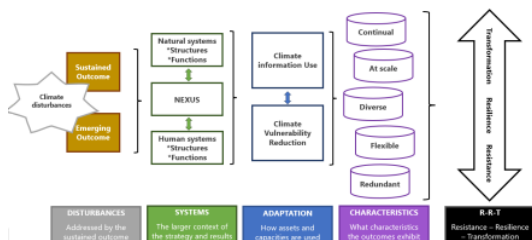
4: The types of resilience strategies used by the project outcomes

Component

5: The position along the resilience scale based on the cumulative effect of the sustained actions and means

Component

Solution:



[Click to enlarge]

7] What are the main outputs expected for the draft inception report?

1- Inventory and analysis of _____:

2- (Re-) creation of _____:

3- Identification of factors affecting _____:

4- _____ selection:

Solution:

* 1- Inventory and analysis of *project data availability and quality at hand*

2- (Re-) creation of *Theory of Change*

3- Identification of factors affecting *sustainability for theory of sustainability*

4- *Outcome* selection

[Highlight after the star to see]

See you soon!



For more information, please contact the AF-TERG: af-terg-sec@adaptation-fund.org