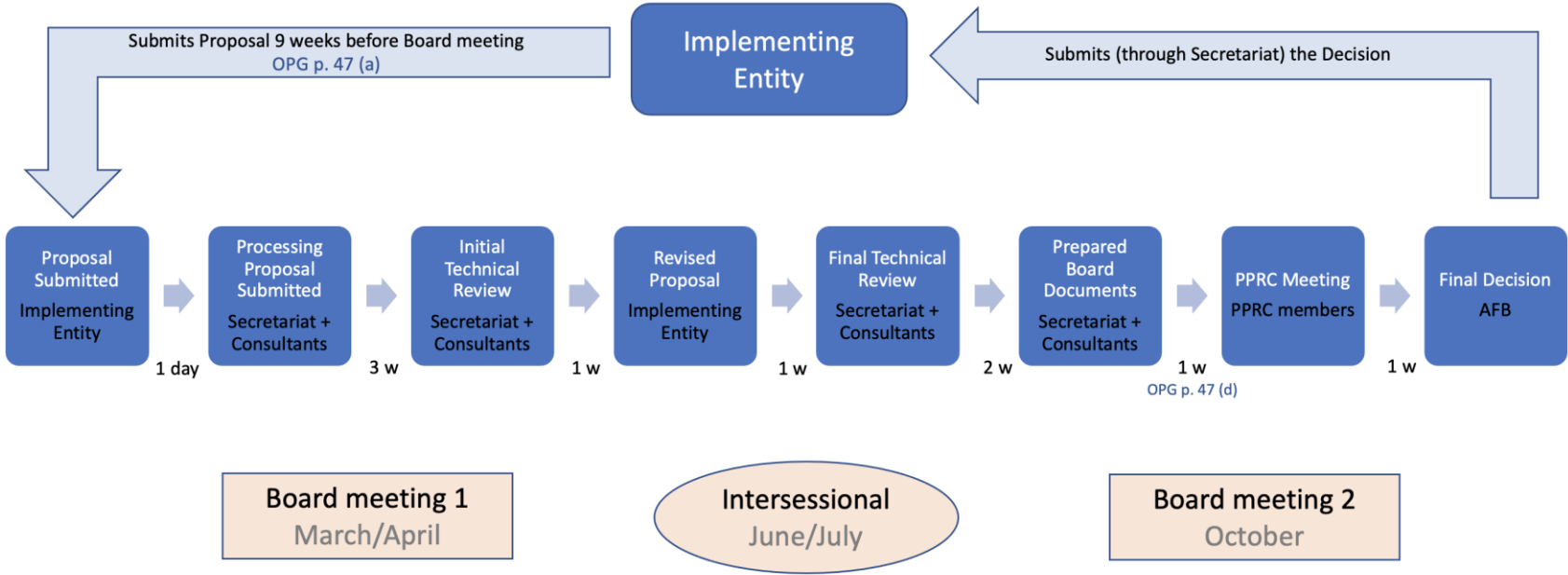


THE CURRENT SUBMISSION MODEL (aka Option 1)

Option 1 THIS OPTION IS NOT RECOMMENDED.



Schematic representation of Option 1- current review cycle as described in the OPG.

Submission of Regular Single-Country and Regional projects and programmes

(REGULAR REVIEW PROCESS)

Open starting now

- Submission of LOEs only

Open starting now,
until **15 December,**
2022

- Notification of intention of regular proposals' submission (optional)

Starting 2 January,
2023

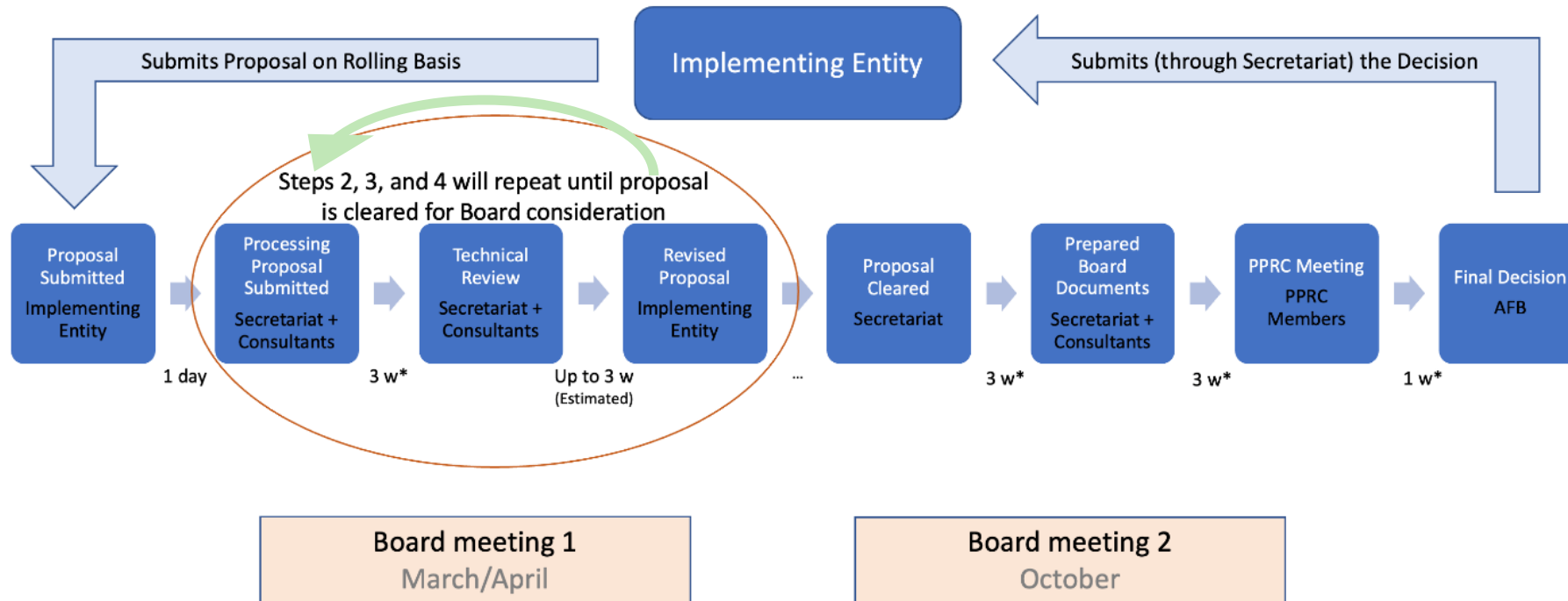
- Submission period for regular projects (with valid LOEs) begins

Closing 9 January,
2023
6pm EDT

- Submission period of regular proposal (with valid LOEs) ends

ROLLING SUBMISSIONS (aka Option 2)

Option 2



Schematic representation of Option 2.

* Business standards (i.e., no. of weeks indicated above) are provisional and proposed based on Secretariat experience. They can be confirmed or adjusted if needed or desired by the PPRC.



Submission of proposals under the Innovation, Enhanced Direct Access (EDA), Learning Grants and Project Scale-up Grants windows

(Rolling-basis submissions)

Open starting now

- Submission of proposals under above mentioned windows

Starting 20 January, 2023, 6pm EDT

Proposals for Innovation, Enhanced Direct Access (EDA), learning grants and project scale-up grants can continue to be submitted on a rolling basis beyond January 20, 2023 but will be reviewed only following the conclusion of the Board meeting AFB40 in March, 2023.



ADAPTATION FUND

Thank you!

www.adaptation-fund.org

@adaptationfund

