



ADAPTATION FUND

AFB/PPRC.31/20
13 March 2023

Adaptation Fund Board
Project and Programme Review Committee
Thirty-first Meeting
Bonn, Germany, 21-22 March 2023

PROPOSAL FOR INDONESIA (4)

Background

1. The Operational Policies and Guidelines (OPG) for Parties to Access Resources from the Adaptation Fund (the Fund), adopted by the Adaptation Fund Board (the Board), state in paragraph 45 that regular adaptation project and programme proposals, i.e., those that request funding exceeding US\$ 1 million, would undergo either a one-step, or a two-step approval process. In case of the one-step process, the proponent would directly submit a fully-developed project proposal. In the two-step process, the proponent would first submit a brief project concept, which would be reviewed by the Project and Programme Review Committee (PPRC) and would have to receive the endorsement of the Board. In the second step, the fully-developed project/programme document would be reviewed by the PPRC, and would ultimately require the Board's approval.

2. The Templates approved by the Board (Annex 5 of the OPG, as amended in March 2016) do not include a separate template for project and programme concepts but provide that these are to be submitted using the project and programme proposal template. The section on Adaptation Fund Project Review Criteria states:

For regular projects using the two-step approval process, only the first four criteria will be applied when reviewing the 1st step for regular project concept. In addition, the information provided in the 1st step approval process with respect to the review criteria for the regular project concept could be less detailed than the information in the request for approval template submitted at the 2nd step approval process. Furthermore, a final project document is required for regular projects for the 2nd step approval, in addition to the approval template.

3. The first four criteria mentioned above are:

- (i) Country Eligibility,
- (ii) Project Eligibility,
- (iii) Resource Availability, and
- (iv) Eligibility of NIE/MIE.

4. The fifth criterion, applied when reviewing a fully-developed project document, is:
(v) Implementation Arrangements.

5. It is worth noting that at the twenty-second Board meeting, the Environmental and Social Policy (ESP) of the Fund was approved and at the twenty-seventh Board meeting, the Gender Policy (GP) of the Fund was also approved. Consequently, compliance with both the ESP and the GP has been included in the review criteria both for concept documents and fully-developed project documents. The proposal template was revised as well, to include sections requesting demonstration of compliance of the project/programme with the ESP and the GP.

6. At its seventeenth meeting, the Board decided (Decision B.17/7) to approve "Instructions for preparing a request for project or programme funding from the Adaptation Fund", contained in the Annex to document AFB/PPRC.8/4, which further outlines applicable review criteria for both concepts and fully-developed proposals. The latest version of this document was launched in conjunction with the revision of the Operational Policies and Guidelines in November 2013.

7. Based on the Board Decision B.9/2, the first call for project and programme proposals was issued and an invitation letter to eligible Parties to submit project and programme proposals to the Fund was sent out on April 8, 2010.

8. According to the Board Decision B.12/10, a project or programme proposal needs to be received by the secretariat no less than nine weeks before a Board meeting, in order to be considered by the Board in that meeting.

9. The following project concept document titled "Collaboration for the Conservation of Cimandiri Watershed Landscapes through the Potential of Silvopasture and Community Agroforestry" was submitted for Indonesia by the Partnership for Governance Reform (Kemitraan), which is the National Implementing Entity of the Adaptation Fund.

10. This is the second submission of the project concept proposal using the two-step submission process.

11. It was first submitted in the thirty-ninth meeting as a project concept and the Board decided:

- (a) To not endorse the concept note as supplemented by the clarification responses provided by Partnership for Governance Reform in Indonesia (Kemitraan) to the request made by the technical review;*
- (b) To suggest that Kemitraan reformulate the proposal taking into account the observations in the review sheet annexed to the notification of the Board's decision, as well as the following issues:*
 - (i) The proposal should provide more details on the financial sustainability of the proposed activities;*
 - (ii) The proponent should carry out a comprehensive consultations process with vulnerable and marginalized groups, including women's and youth groups*
- (c) To not approve the project formulation grant of US\$ 50,000;*
- (d) To request Kemitraan to transmit the observations under subparagraph (b) to the Government of Indonesia.*

(Decision B.39/14)

12. The current submission was received by the secretariat in time to be considered in the fortieth Board meeting. The secretariat carried out a technical review of the project proposal, assigned it the diary number AF00000305, and completed a review sheet.

13. In accordance with a request to the secretariat made by the Board in its 10th meeting, the secretariat shared this review sheet with Kemitraan and offered it the opportunity of providing responses before the review sheet was sent to the PPRC.

14. The secretariat is submitting to the PPRC the summary and, pursuant to decision B.17/15, the final technical review of the project, both prepared by the secretariat, along with the final submission of the proposal in the following section. In accordance with decision B.25.15, the proposal is submitted with changes between the initial submission and the revised version highlighted.



ADAPTATION FUND

ADAPTATION FUND BOARD SECRETARIAT TECHNICAL REVIEW OF PROJECT/PROGRAMME PROPOSAL

PROJECT/PROGRAMME CATEGORY: SMALL-SIZED PROJECT CONCEPT

Country/Region: Indonesia/Asia & Pacific
Project Title: Collaboration for the Conservation of Cimandiri Watershed Landscapes through the Potential of Silvopasture and Community Agroforestry
Thematic Focal Area: Rural development
Implementing Entity: Kemitraan (Partnership for Governance Reform)
Executing Entities: Consortium for Sukabumi Climate Adaptation, Sajogyo Institute, Absolute Indonesia, Forest Watch Indonesia, and IFM Fund
AF Project ID: AF00000305
IE Project ID:
Reviewer and contact person: Micol Ullmann Auger
IE Contact Person:

Requested Financing from Adaptation Fund (US Dollars): 960,225
Co-reviewer(s): Imèn Meliane

Technical Summary

The project “Collaboration for the Conservation of Cimandiri Watershed Landscapes through the Potential of Silvopasture and Community Agroforestry” aims to improve the adaptation of farming communities that depend on forest areas as water catchments, vulnerable to the impacts of climate change and natural disasters, through the management of the Cimandiri Asri Watershed (Sustainable Cimandiri Management). This will be done through the three components below:

Component 1: Increasing the adaptive capacity of the community for economic resilience (USD 210,000);

Component 2: Collective Adaptation Actions related to ecosystem restoration (USD 310,925);

Component 3: Policy advocacy (USD 280,000).

Requested financing overview:

Project/Programme Execution Cost: USD 84,075

Total Project/Programme Cost: USD 885,000

Implementing Fee: USD 75,225

	<p>Financing Requested: USD 960,225</p> <p>The initial technical review raises some issues, such as the need for more details regarding the consultative process and vulnerable groups and the potential overlap or complementarity with other initiatives, as is discussed in the number of Clarification Requests (CRs) and Corrective Action Requests (CARs) raised in the review.</p> <p>The final technical review finds that the proposal has addressed some of the CRs and CARs requests. Namely, the following issues remain: more details are required on complementarity with other initiatives, and on consultations with vulnerable groups.</p>
Date:	February 15, 2023

Review Criteria	Questions	Comments Initial Technical Review	Comments Final Technical Review
Country Eligibility	1. Is the country party to the Kyoto Protocol?	Yes.	-
	2. Is the country a developing country particularly vulnerable to the adverse effects of climate change?	Yes. Indonesia is particularly vulnerable to the adverse effects of climate change, with increased variability in rainfall and rising temperatures causing floods, landslides, and droughts which threaten lives, agricultural productivity, and food security.	-
Project Eligibility	1. Has the designated government authority for the Adaptation Fund endorsed the project/programme?	Yes. As per the endorsement letter dated August 5, 2022.	-

	<p>2. Does the length of the proposal amount to no more than Fifty pages for the project/programme concept, including its annexes?</p>	<p>No.</p> <p>The proposal is 52 pages and attendance lists are included as links rather than as annexes.</p> <p>CAR1: Please reduce proposal length to no more than 50 pages, including the annexes.</p> <p>CAR2: Please include all attendance lists and consultation results as annexes within the proposal, rather than as separate links.</p>	<p>CAR1: Cleared.</p> <p>CAR2: Cleared.</p> <p>As per the additional information provided on pages 5-11.</p>
	<p>3. Does the project / programme support concrete adaptation actions to assist the country in addressing adaptive capacity to the adverse effects of climate change and build in climate resilience?</p>	<p>Yes.</p> <p>The proposed concept provides a clear rationale for the proposed activities, which are focused on improving the adaptive capacities and economic resilience of vulnerable farming communities, women's and youth groups, through climate-smart agricultural and landscape management and ecosystem restoration, as well as through policy advocacy to support the development of Regional Action Plans related to Climate Change Adaptation (RAD-API) and the Follow-Up Plan (RTL) document for replication.</p> <p>Additionally, the project plans for the establishment of a collaborative Watershed-based and community-based protection system for living space and livelihoods, with outputs to achieve these outcomes, including the development of a cross-sector</p>	<p>-</p>

		<p>collaborative forum (Watershed Forum/Committee) and Information system for knowledge sharing.</p> <p>The background and context section illustrates how the planned project activities can respond to the likely climate scenarios.</p>	
	<p>4. Does the project / programme provide economic, social and environmental benefits, particularly to vulnerable communities, including gender considerations, while avoiding or mitigating negative impacts, in compliance with the Environmental and Social Policy and Gender Policy of the Fund?</p>	<p>Yes.</p> <p>The project will be implemented in 15 villages, five sub-districts, Sukabumi regency, and the West Java province. The targets of this program are groups of vulnerable farmers and women who depend on the land and/or forest areas for their livelihoods. Population sizes are included on pages 26-27.</p> <p>Priority groups include local communities most vulnerable to climate change; forest farmers' groups and horticultural farmers, women's and youth groups, and marginalized groups, including people with disabilities and low social class. Indirect beneficiaries of the planned ecological restoration are communities in the upstream and middle of the Cimandiri Watershed.</p> <p>The proposal outlines the environmental, economic and social benefits of the project. With regard to social benefits, the proposal commits to using the GEDSI approach in order to benefit at least 50% of women's groups in each target village. Quantified data regarding the number of women's and</p>	-

		youth groups, people with disabilities, and other marginalized community members. An initial gender analysis is included on page 50.	
	5. Is the project / programme cost effective?	<p>Yes.</p> <p>The project's planned ecological restoration activities will reduce the incidence of flooding and landslides, preventing economic losses and saving lives. The increased capacity of communities will improve resilience to climate shocks and strengthen local economies. Information systems and collaboration frameworks will enable cross-sector management and communication, and the project's alignment with national and sub-national strategies will secure institutional support including program sustainability sourced from local, provincial and central government program budgets.</p> <p>The project will receive funds from local, provincial, and central government program budgets as outlined in a 5-year MoU, to continue the outputs and impacts of the adaptation program, during and after the project ends, as outlined on pages as outlined on pages 29, and 37-39.</p>	-
	6. Is the project / programme consistent with national or sub-national sustainable development strategies,	<p>Yes.</p> <p>The concept proposal outlines how the project is consistent with national and sub-national sustainable development</p>	-

	national or sub-national development plans, poverty reduction strategies, national communications and adaptation programs of action and other relevant instruments?	strategies, plans, and other relevant instruments including: the National Adaptation Plan (RAN-API), Indonesia's Updated NDC, Ditjen PPI's Strategic Plan among others.	
	7. Does the project / programme meet the relevant national technical standards, where applicable, in compliance with the Environmental and Social Policy of the Fund?	Yes. The planned conservation partnership between the communities and the Mount Halimun Salak National Park will comply with the Regulation of the Director General of Natural Resources and Ecosystem Conservation Number P.6/KSDAE/SET/Kum.1/6/2018 concerning Technical Guidelines for Conservation Partnerships in Nature Reserves and Conservation Areas.	-
	8. Is there duplication of project / programme with other funding sources?	Unclear. The proposal mentions several ongoing initiatives on page 20-21 being carried out by Absolute Indonesia and its partners to empower communities in the northern area of the Cimandiri watershed. Lessons learned from previous capacity building and agroforestry activities with the 14 farmers groups is outlined on page 17-18. The village-level information portal for knowledge sharing contemplated under component 3 can serve as an effective	CR1: Not cleared. Please provide a list of all other programs that have been funded by other donors and government at the target location referenced on page 25, describing lack of overlap / complementarity and how the project will continue or strengthen previously achieved outputs.

		<p>coordination mechanism to exchange information between development partners, avoid overlap, and support synergies between relevant initiatives.</p> <p>CR1: Please include a list of all relevant potentially overlapping projects / programmes, with titles, and specify which activities have potential overlap or complementarity.</p>	
	<p>9. Does the project / programme have a learning and knowledge management component to capture and feedback lessons?</p>	<p>Yes.</p> <p>Component 3 includes the development of knowledge management tools including modules dedicated to climate change adaptation data and economic resilience made available to the public, and a village-level information portal for knowledge sharing. This system will also support the provision of data for the SIBERALAM (Natural Resources Information System) which is currently under development by the Regional Secretariat of Sukabumi Regency, to assist stakeholders in program development and replication.</p>	-
	<p>10. Has a consultative process taken place, and has it involved all key stakeholders, and vulnerable groups, including gender considerations in compliance with the Environmental and Social</p>	<p>Partially.</p> <p>An initial consultation with the local Sukabumi government was held on July 7th 2022, which called for the drawing up of a 5-year Memorandum of Understanding to delineate roles between the “Consortium” and the local government, and to regulate a mechanism for fundraising to ensure</p>	<p>CR2: Cleared.</p> <p>As per the additional information provided on pages 30-34.</p> <p>CAR3: Not cleared.</p>

	<p>Policy and Gender Policy of the Fund?</p>	<p>financial sustainability and continuity of funding for the project activities.</p> <p>Additionally, a series of discussions have been carried out with regional and local governments, the Head of the Gunung Halimun National Park Office, and farmers groups.</p> <p>However, consultations with vulnerable groups, including women's groups, youth groups, or groups with disabilities and marginalized groups have not yet been carried out.</p> <p>A stakeholder map is included on page 34, however the roles are unclear and women's, youth, and disability groups are not featured in the stakeholder map, despite being target priority groups of the project. "PERHUTANI CORPORATE" is listed as a context setter, but its role is not explained elsewhere in the concept note.</p> <p>CR2: Please clarify the roles of each stakeholder in the map, including where women's, youth, disabled groups, and farm workers fall within the stakeholder map. Please also specify which NGO is listed under the "secondary stakeholders". Please also clarify the difference between "key stakeholders" and "main stakeholders". Also, please explain how public media, listed as a context setter in the map can "bring potential risk", as mentioned on page 34.</p>	<p>More information has been provided regarding vulnerable groups and the key challenges they face, however it is not clear whether these groups were present at the consultations cited in annexes 2 and 5.</p> <p>Kindly state the title and name of group or community each participant represents, as well as the date of the consultation.</p> <p>CAR4: Not cleared.</p> <p>Annex 3 includes a report on the consultation held with Sukabumi Regional Secretary, but none for the other consultations.</p> <p>Please include a report for the consultations held with vulnerable groups and farmers' groups.</p>
--	--	--	--

		<p>CAR3: Please involve all relevant stakeholders of the project in a consultations process, with special attention to vulnerable, marginalized, and indigenous groups in the target area, where relevant.</p> <p>CAR4: Please include a report documenting the consultative process to include a) the gender-disaggregated list of stakeholders already consulted (names, titles role ascription, date of consultation), b) a description of the consultation techniques (tailored specifically per target group), c) the key consultation findings (in particular suggestions and concerns raised), with special attention to vulnerable, marginalized, and indigenous groups in the target area.</p>	
	11. Is the requested financing justified on the basis of full cost of adaptation reasoning?	<p>Yes.</p> <p>As outlined on page 31.</p>	-
	12. Is the project / program aligned with AF's results framework?	<p>Yes.</p> <p>The proposed project would contribute to the Fund's outcomes 1, 2, 3, 5, and 7.</p> <p>The proposal does not yet include a results framework or specify alignment with the AF's results framework.</p> <p>Please note that the <u>fully developed proposal</u> must include a results framework, with quantified expected</p>	-

		<p>results with gender-responsive indicators and targets and specify the alignment with the Adaptation Fund revised strategic results framework adopted in 2019. Please refer to: https://www.adaptation-fund.org/wp-content/uploads/2019/10/Adaptation-Fund-Strategic-Results-Framework-Amended-in-March-2019-2.pdf</p>	
	<p>13. Has the sustainability of the project/programme outcomes been taken into account when designing the project?</p>	<p>Yes.</p> <p>The adaptation benefits achieved with the help of the project can be sustained after its end and enable replication and scaling up with other funds, including program sustainability sourced from local, provincial and central government program budgets, and the private sector. An arrangement supported by a Memorandum of Understanding between the Sukabumi Regent and the Consortium, is outlined on page 37. A list of viable funding sources, including various ministries and institutions is included on page 38.</p> <p>The development of local institutions and the establishment of a holistic watershed management approach which will involve local communities, especially those upstream, and will support the sustainability of the provision of ecosystem services and their integration into Sukabumi Regency planning.</p>	-

		<p>The project's support of community organization and social forestry through conservation partnerships, increased awareness of climate change and economic resilience of local communities will support social sustainability of project activities. Additionally, project activities will support improved access to financial tools, including to the revolving fund, access to markets, and increased financial security of the local farmer communities.</p>	
	<p>14. Does the project / programme provide an overview of environmental and social impacts / risks identified, in compliance with the Environmental and Social Policy and Gender Policy of the Fund?</p>	<p>Yes.</p> <p>As outlined in Section K, on pages 39-43 and in the checklist of environmental and social principles.</p> <p>The project is classified as a Category C.</p>	-
Resource Availability	<p>1. Is the requested project / programme funding within the cap of the country?</p>	Yes.	-
	<p>2. Is the Implementing Entity Management Fee at or below 8.5 per cent of the total project/programme budget before the fee?</p>	Yes.	-

	3. Are the Project/Programme Execution Costs at or below 9.5 per cent of the total project/programme budget (including the fee)?	Yes.	-
Eligibility of IE	1. Is the project/programme submitted through an eligible Implementing Entity that has been accredited by the Board?	Yes. Kemitraan is an accredited National Implementing Entity.	-
Implementation Arrangements	1. Is there adequate arrangement for project / programme management, in compliance with the Gender Policy of the Fund?	n/a at concept stage	
	2. Are there measures for financial and project/programme risk management?	n/a at concept stage	
	3. Are there measures in place for the management of for environmental and social risks, in line with the Environmental and Social Policy and Gender Policy of the Fund?	n/a at concept stage	
	4. Is a budget on the Implementing Entity	n/a at concept stage	

	Management Fee use included?		
	5. Is an explanation and a breakdown of the execution costs included?	n/a at concept stage	
	6. Is a detailed budget including budget notes included?	n/a at concept stage	
	7. Are arrangements for monitoring and evaluation clearly defined, including budgeted M&E plans and sex-disaggregated data, targets and indicators, in compliance with the Gender Policy of the Fund?	n/a at concept stage	
	8. Does the M&E Framework include a break-down of how implementing entity IE fees will be utilized in the supervision of the M&E function?	n/a at concept stage	
	9. Does the project/programme's results framework align with the AF's results framework? Does it include at least one core outcome indicator from the Fund's results framework?	n/a at concept stage	

	10. Is a disbursement schedule with time-bound milestones included?	n/a at concept stage	
--	---	----------------------	--



ADAPTATION FUND BOARD SECRETARIAT TECHNICAL REVIEW OF PROJECT/PROGRAMME PROPOSAL

PROJECT/PROGRAMME CATEGORY: SMALL-SIZED PROJECT CONCEPT

Country/Region: Indonesia/Asia & Pacific
Project Title: Collaboration for the Conservation of Cimandiri Watershed Landscapes through the Potential of Silvopasture and Community Agroforestry
Thematic Focal Area: Rural development
Implementing Entity: Kemitraan (Partnership for Governance Reform)
Executing Entities: Consortium for Sukabumi Climate Adaptation, Sajogyo Institute, Absolute Indonesia, Forest Watch Indonesia, and IFM Fund
AF Project ID: AF00000305
IE Project ID:
Reviewer and contact person: Micol Ullmann Auger
IE Contact Person:

Requested Financing from Adaptation Fund (US Dollars): 960,225
Co-reviewer(s): Imèn Meliane

Technical Summary

The project "Collaboration for the Conservation of Cimandiri Watershed Landscapes through the Potential of Silvopasture and Community Agroforestry" aims to improve the adaptation of farming communities that depend on forest areas as water catchments, vulnerable to the impacts of climate change and natural disasters, through the management of the Cimandiri Asri Watershed (Sustainable Cimandiri Management). This will be done through the three components below:

Component 1: Increasing the adaptive capacity of the community for economic resilience (USD 210,000);

Component 2: Collective Adaptation Actions related to ecosystem restoration (USD 310,925);

Component 3: Policy advocacy (USD 280,000).

Requested financing overview:

Project/Programme Execution Cost: USD 84,075

Total Project/Programme Cost: USD 885,000

Implementing Fee: USD 75,225

	<p>Financing Requested: USD 960,225</p> <p>The initial technical review raises some issues, such as the need for more details regarding the consultative process and vulnerable groups and the potential overlap or complementarity with other initiatives, as is discussed in the number of Clarification Requests (CRs) and Corrective Action Requests (CARs) raised in the review.</p>
Date:	January 19, 2023

Review Criteria	Questions	Comments Initial Technical Review	
Country Eligibility	1. Is the country party to the Kyoto Protocol?	Yes.	
	2. Is the country a developing country particularly vulnerable to the adverse effects of climate change?	Yes. Indonesia is particularly vulnerable to the adverse effects of climate change, with increased variability in rainfall and rising temperatures causing floods, landslides, and droughts which threaten lives, agricultural productivity, and food security.	
Project Eligibility	1. Has the designated government authority for the Adaptation Fund endorsed the project/programme?	Yes. As per the endorsement letter dated August 5, 2022.	
	2. Does the length of the proposal amount to no more than Fifty pages for the project/programme concept, including its annexes?	No. The proposal is 52 pages and attendance lists are included as links rather than as annexes. CAR1: Please reduce proposal length to no more than 50 pages, including the annexes.	CAR1: already reduced to 48 pages, including the annexes CAR2 : All attendance lists and consultation results already in the annexes 2 and 5

		CAR2: Please include all attendance lists and consultation results as annexes within the proposal, rather than as separate links.	
	3. Does the project / programme support concrete adaptation actions to assist the country in addressing adaptive capacity to the adverse effects of climate change and build in climate resilience?	<p>Yes.</p> <p>The proposed concept provides a clear rationale for the proposed activities, which are focused on improving the adaptive capacities and economic resilience of vulnerable farming communities, women's and youth groups, through climate-smart agricultural and landscape management and ecosystem restoration, as well as through policy advocacy to support the development of Regional Action Plans related to Climate Change Adaptation (RAD-API) and the Follow-Up Plan (RTL) document for replication.</p> <p>Additionally, the project plans for the establishment of a collaborative Watershed-based and community-based protection system for living space and livelihoods, with outputs to achieve these outcomes, including the development of a cross-sector collaborative forum (Watershed Forum/Committee) and Information system for knowledge sharing.</p> <p>The background and context section illustrates how the planned project activities can respond to the likely climate scenarios.</p>	
	4. Does the project / programme provide economic, social and environmental benefits, particularly to vulnerable communities, including gender considerations, while avoiding or mitigating negative impacts, in compliance with the	<p>Yes.</p> <p>The project will be implemented in 15 villages, five sub-districts, Sukabumi regency, and the West Java province. The targets of this program are groups of vulnerable farmers and women who depend on the land and/or forest areas for their livelihoods. Population sizes are included on pages 26-27.</p>	

	Environmental and Social Policy and Gender Policy of the Fund?	<p>Priority groups include local communities most vulnerable to climate change; forest farmers' groups and horticultural farmers, women's and youth groups, and marginalized groups, including people with disabilities and low social class. Indirect beneficiaries of the planned ecological restoration are communities in the upstream and middle of the Cimandiri Watershed.</p> <p>The proposal outlines the environmental, economic and social benefits of the project. With regard to social benefits, the proposal commits to using the GEDSI approach in order to benefit at least 50% of women's groups in each target village. Quantified data regarding the number of women's and youth groups, people with disabilities, and other marginalized community members. An initial gender analysis is included on page 50.</p>	
	5. Is the project / programme cost effective?	<p>Yes.</p> <p>The project's planned ecological restoration activities will reduce the incidence of flooding and landslides, preventing economic losses and saving lives. The increased capacity of communities will improve resilience to climate shocks and strengthen local economies. Information systems and collaboration frameworks will enable cross-sector management and communication, and the project's alignment with national and sub-national strategies will secure institutional support including program sustainability sourced from local, provincial and central government program budgets.</p> <p>The project will receive funds from local, provincial, and central government program budgets as outlined in a 5-year MoU, to continue the outputs and impacts of the adaptation program, during and</p>	

		after the project ends, as outlined on pages as outlined on pages 29, and 37-39.	
	6. Is the project / programme consistent with national or sub-national sustainable development strategies, national or sub-national development plans, poverty reduction strategies, national communications and adaptation programs of action and other relevant instruments?	Yes. The concept proposal outlines how the project is consistent with national and sub-national sustainable development strategies, plans, and other relevant instruments including: the National Adaptation Plan (RAN-API), Indonesia's Updated NDC, Ditjen PPI's Strategic Plan among others.	
	7. Does the project / programme meet the relevant national technical standards, where applicable, in compliance with the Environmental and Social Policy of the Fund?	Yes. The planned conservation partnership between the communities and the Mount Halimun Salak National Park will comply with the Regulation of the Director General of Natural Resources and Ecosystem Conservation Number P.6/KSDAE/SET/Kum.1/6/2018 concerning Technical Guidelines for Conservation Partnerships in Nature Reserves and Conservation Areas.	
	8. Is there duplication of project / programme with other funding sources?	Unclear. The proposal mentions several ongoing initiatives on page 20-21 being carried out by Absolute Indonesia and its partners to empower communities in the northern area of the Cimandiri watershed. Lessons learned from previous capacity building and agroforestry activities with the 14 farmers groups is outlined on page 17-18. The village-level information portal for knowledge sharing contemplated under component 3 can serve	CR1: Page 23, paragraph 59, in the table 4 regarding The Difference Between Selaras and Adaptation Fund Project. Answer : It has been described in the latest paragraph 59

Commented [M11]: We don't need to compare SELARAS and AF project, what we need is to list all potential similar/overlapping project

		<p>as an effective coordination mechanism to exchange information between development partners, avoid overlap, and support synergies between relevant initiatives.</p> <p>CR1: Please include a list of all relevant potentially overlapping projects / programmes, with titles, and specify which activities have potential overlap or complementarity.</p>	
	9. Does the project / programme have a learning and knowledge management component to capture and feedback lessons?	<p>Yes.</p> <p>Component 3 includes the development of knowledge management tools including modules dedicated to climate change adaptation data and economic resilience made available to the public, and a village-level information portal for knowledge sharing. This system will also support the provision of data for the SIBERALAM (Natural Resources Information System) which is currently under development by the Regional Secretariat of Sukabumi Regency, to assist stakeholders in program development and replication.</p>	
	10. Has a consultative process taken place, and has it involved all key stakeholders, and vulnerable groups, including gender considerations in compliance with the Environmental and Social Policy and Gender Policy of the Fund?	<p>Partially.</p> <p>An initial consultation with the local Sukabumi government was held on July 7th 2022, which called for the drawing up of a 5-year Memorandum of Understanding to delineate roles between the "Consortium" and the local government, and to regulate a mechanism for fundraising to ensure financial sustainability and continuity of funding for the project activities.</p> <p>Additionally, a series of discussions have been carried out with regional and local governments, the</p>	<p>CR2: pages 27, paragraph 68 & 69 and also the Table 5 regarding The Stakeholders Roles</p> <p>Answer : The table has been fixed</p> <p>CAR3: pages 26 paragraph 65; and the pages 29, paragraph 70 in Table 6. Vulnerable</p>

Commented [M12]: Please check the comment in clean version

		<p>Head of the Gunung Halimun National Park Office, and farmers groups.</p> <p>However, consultations with vulnerable groups, including women's groups, youth groups, or groups with disabilities and marginalized groups have not yet been carried out.</p> <p>A stakeholder map is included on page 34, however the roles are unclear and women's, youth, and disability groups are not featured in the stakeholder map, despite being target priority groups of the project. "PERHUTANI CORPORATE" is listed as a context setter, but its role is not explained elsewhere in the concept note.</p> <p>CR2: Please clarify the roles of each stakeholder in the map, including where women's, youth, disabled groups, and farm workers fall within the stakeholder map. Please also specify which NGO is listed under the "secondary stakeholders". Please also clarify the difference between "key stakeholders" and "main stakeholders". Also, please explain how public media, listed as a context setter in the map can "bring potential risk", as mentioned on page 34.</p> <p>CAR3: Please involve all relevant stakeholders of the project in a consultations process, with special attention to vulnerable, marginalized, and indigenous groups in the target area, where relevant.</p> <p>CAR4: Please include a report documenting the consultative process to include a) the gender-disaggregated list of stakeholders already consulted (names, titles role ascription, date of consultation), b) a description of the consultation techniques (tailored specifically per target group), c) the key consultation findings (in particular suggestions and</p>	<p>Groups and The Vulnerabilities Experienced</p> <p>CAR4: Annexes 3 and 4</p>
--	--	---	---

		concerns raised), with special attention to vulnerable, marginalized, and indigenous groups in the target area.	
	11. Is the requested financing justified on the basis of full cost of adaptation reasoning?	Yes. As outlined on page 31.	
	12. Is the project / program aligned with AF's results framework?	Yes. The proposed project would contribute to the Fund's outcomes 1, 2, 3, 5, and 7. The proposal does not yet include a results framework or specify alignment with the AF's results framework. Please note that the <u>fully developed proposal</u> must include a results framework, with quantified expected results with gender-responsive indicators and targets and specify the alignment with the Adaptation Fund revised strategic results framework adopted in 2019. Please refer to: https://www.adaptation-fund.org/wp-content/uploads/2019/10/Adaptation-Fund-Strategic-Results-Framework-Amended-in-March-2019-2.pdf	
	13. Has the sustainability of the project/programme outcomes been taken into account when designing the project?	Yes. The adaptation benefits achieved with the help of the project can be sustained after its end and enable replication and scaling up with other funds, including program sustainability sourced from local, provincial and central government program budgets, and the private sector. An arrangement supported by a Memorandum of Understanding between the Sukabumi Regent and the Consortium, is outlined	

		<p>on page 37. A list of viable funding sources, including various ministries and institutions is included on page 38.</p> <p>The development of local institutions and the establishment of a holistic watershed management approach which will involve local communities, especially those upstream, and will support the sustainability of the provision of ecosystem services and their integration into Sukabumi Regency planning.</p> <p>The project's support of community organization and social forestry through conservation partnerships, increased awareness of climate change and economic resilience of local communities will support social sustainability of project activities. Additionally, project activities will support improved access to financial tools, including to the revolving fund, access to markets, and increased financial security of the local farmer communities.</p>	
	14. Does the project / programme provide an overview of environmental and social impacts / risks identified, in compliance with the Environmental and Social Policy and Gender Policy of the Fund?	<p>Yes.</p> <p>As outlined in Section K, on pages 39-43 and in the checklist of environmental and social principles.</p> <p>The project is classified as a Category C.</p>	
Resource Availability	1. Is the requested project / programme funding within the cap of the country?	Yes.	
	2. Is the Implementing Entity Management Fee at or below	Yes.	

	8.5 per cent of the total project/programme budget before the fee?		
	3. Are the Project/Programme Execution Costs at or below 9.5 per cent of the total project/programme budget (including the fee)?	Yes.	
Eligibility of IE	1. Is the project/programme submitted through an eligible Implementing Entity that has been accredited by the Board?	Yes. Kemitraan is an accredited National Implementing Entity.	
Implementation Arrangements	1. Is there adequate arrangement for project / programme management, in compliance with the Gender Policy of the Fund?	n/a at concept stage	
	2. Are there measures for financial and project/programme risk management?	n/a at concept stage	
	3. Are there measures in place for the management of for environmental and social risks, in line with the Environmental and Social Policy and Gender Policy of the Fund?	n/a at concept stage	

	4. Is a budget on the Implementing Entity Management Fee use included?	n/a at concept stage	
	5. Is an explanation and a breakdown of the execution costs included?	n/a at concept stage	
	6. Is a detailed budget including budget notes included?	n/a at concept stage	
	7. Are arrangements for monitoring and evaluation clearly defined, including budgeted M&E plans and sex-disaggregated data, targets and indicators, in compliance with the Gender Policy of the Fund?	n/a at concept stage	
	8. Does the M&E Framework include a break-down of how implementing entity IE fees will be utilized in the supervision of the M&E function?	n/a at concept stage	
	9. Does the project/programme's results framework align with the AF's results framework? Does it include at least one core outcome indicator from the Fund's results framework?	n/a at concept stage	

	10. Is a disbursement schedule with time-bound milestones included?	n/a at concept stage	
--	---	----------------------	--



REQUEST FOR PROJECT/PROGRAMME FUNDING FROM THE ADAPTATION FUND

The annexed form should be completed and transmitted to the Adaptation Fund Board Secretariat by email or fax.

Please type in the responses using the template provided. The instructions attached to the form provide guidance to filling out the template.

Please note that a project/programme must be fully prepared (i.e., fully appraised for feasibility) when the request is submitted. The final project/programme document resulting from the appraisal process should be attached to this request for funding.

Complete documentation should be sent to:

The Adaptation Fund Board Secretariat
1818 H Street NW
MSN N7-700
Washington, D.C., 20433 U.S.A
Fax: +1 (202) 522-3240/5
Email: afbsec@adaptation-fund.org

Table of Content

PART I: PROJECT/PROGRAMME INFORMATION	1
1.A.	21)
	22)
	23)
	64)
	125)
	156)
	151.B.
	191.C.
	201.D.
23PART II: PROJECT/PROGRAMME JUSTIFICATION	5
A.	24B.
	25C.
	28D.
	29E.
	29F.
	30G.
	30H.
	31I.
	38J.
	39K.
41PART III: ENDORSEMENT BY GOVERNMENT AND CERTIFICATION BY THE IMPLEMENTING ENTITY	1
A.	1B.
	4



PROJECT/PROGRAMME PROPOSAL TO THE ADAPTATION FUND

PART I: PROJECT/PROGRAMME INFORMATION

Project/Programme Category: [Small Sized Project/Programme](#)

Country/ies : [Indonesia](#)

Title of Project/Programme : Collaboration for the Conservation of Cimandiri Watershed Landscapes through the Potential of Silvopasture and Community Agroforestry

Type of Implementing Entity : [National Implementing Entity](#)

Implementing Entity : [KEMITRAAN](#)

[Kemitraan untuk Pembaruan Tata Pemerintahan](#)

Executing Entity/ies : [Consortium for Sukabumi Climate Adaption](#)

1. [Sajogyo Institute](#)
2. [Absolute Indonesia](#)
3. [Forest Watch Indonesia](#)
4. [IFM Fund](#)

Amount of Financing Requested : [\\$ 960,225](#) (in U.S Dollars Equivalent)

1.A. Project / Programme Background and Context:

1) Indonesia's Climate Change

1. In Indonesia, there has been an increase in the average annual temperature around 0.3°C, a decrease in rainfall by 2% - 3%, changes in rainfall patterns, and changes in the rainy season, where the rainy season increases in the south of Indonesia and decreases in the north (Hulme and Sheard, 2003). ~~1999; Beer and Faqih, 2004~~. Shifts in rainfall patterns due to rising temperatures cause changes in the frequency of floods or droughts, water availability, and seasonal water discharge fluctuations (Kovats et al., 2014; Vormoor et al., 2015; Bates et al., 2017). These changes adversely affect the agricultural, energy, transport, and social sectors, which depend on water resources. According to research notes in the Journal of Geophysical Research, Atmospheres (Russo S, Dosio A, et al.).

Formatted: Superscript

2. ~~Climate change that triggers droughts, floods, and landslides is also affected by decreased environmental carrying capacity due to increased pressure on land (Rejekiningrum, 2014).~~ So far, the national development pattern shows changes in land use that result in the loss of land/forest cover, thereby reducing the carrying capacity of the environment, which in turn increases the occurrence of floods and droughts, accompanied by follow-up disasters such as landslides, and various health problems (Pawitan, 2014).

3. ~~The climate change phenomenon has caused crop failure, crop failure, and even puso (Saefudin et al.). Based on data obtained from the results of monitoring conducted by the Ministry of Agriculture of the Republic of Indonesia (during the period from 2000 to 2009), drought and flooding tended to increase, with the average number of agricultural land affected by drought covering an area of 303,641 hectares with puso land reaching 58,489 hectares or equivalent to 767,589 tons of dry grain. Mill (GKG). Meanwhile, the flood-affected area was 271,381 hectares with 79,846 hectares of puso, equivalent to 774,106 tons of GKG. Then, between 2000 and 2009, there were an average of 332 significant floods per year in Indonesia, which caused an average of 271,381 hectares of rice fields and other agricultural lands to be inundated. The climate-related natural disasters that hit Indonesia have caused an average annual loss of US\$45 million between 2000-2019 (Ellyvon Pranita et al.) and are likely to grow substantially.~~

2) Watershed Based Landscape Management

34. Watersheds are described as hydrologic units that are living quarters or platforms of the environmental-based economic activities (Common and Stagl, 2005; Miller and Spoolman, 2015; Reddy et al., 2017). ~~According to the description, it can be concluded that the term of environmental-based watersheds illustrates a place, a platform, or a hydrological cycle space occupied by living (including human beings) and non-living creatures which are correlated and mutually influenced, either among the creatures themselves or between the creatures and their surroundings, which is not limited by the political or government administrative constraints.~~¹

5. Watershed management is a continuous process, along with the management of natural resources and human life dynamic², and problems in managing watersheds seem endless³. Along with population growth, various watershed problems arise because of changing needs of human life. Consequently, watershed management, which is concerned with soil and water resources, also integrates the dynamic development of social, economic, and environmental

Formatted: Space Before: 6 pt, Line spacing: single, Border: Top: (No border), Bottom: (No border), Left: (No border), Right: (No border), Between : (No border), Pattern: Clear

¹ ~~The Indonesian Journal of Development Planning Volume III No. 2 — August 2019~~

² Sheng, T.C. Watershed management field manual. Watershed survey and planning. In FAO Conservation Guide; Food and Agriculture Organization of The United Nations: Rome, Italy, 1990.

³ Paimin; Pramono, I.B.; Purwanto; Indrawati, D.R. Sistem Perencanaan Pengelolaan Daerah Aliran Sungai; Pusat Penelitian dan Pengembangan Konservasi dan Rehabilitasi: Bogor, Indonesia, 2012.

issues.⁴

~~6. The declining capacity of soil absorption is defined as one of the disrupting factors of the environmental carrying capacity, both in the aspect of upstream-downstream watershed interaction and sustainability (Bellfield et al., 2015, Euler et al., 2018, Kindu et al., 2018). Challenges on the protected water source areas and its impacts indicate the value generated for the community both in its surroundings and environment as a whole (Cumming, 2016; Watson et al., 2014).~~

4. Sustainable management of water resources is a serious challenge, especially in areas that have a great potential to experience hydrological disasters and increase the population's water needs (Hassan et al. 2017).

~~7. The management of water resources can not be separated from the watersheds management unit as they are part of the hydrological cycle. Watersheds, a component of the water resources landscape, have been damaged followed by the degradation of environmental quality. Indicators which can be addressed as a result of watershed destruction in Indonesia include (1) an increasing rate of erosion and sedimentation due to the land use transformation from forestry to agriculture, plantations, and settlements at upstreams; (2) the conspicuous fluctuation of river flow in the rainy season and dry season, and (3) the declining quality and quantity of surface water and groundwater. Various interventions have been undertaken to manage the damages, such as policy instruments, budget allocation, and institutional innovations, however, they do not exhibit any optimum results as expected.~~

58. In Indonesia the ministerial-level government organizations are responsible for formulating a national development plan, as well as coordinating and integrating sectoral development plans, including watershed management. Government Regulation No. 37/2012 requires the Ministry of Forestry to conduct interprovincial watershed management planning, establish a watershed information center in each province, establish a watershed observer forum, and monitor and evaluate watershed performance.⁵

~~9. In terms of terminology, watershed management is a human's attempt To regulate the interrelation between natural resources and human beings along with their activities, in order to realize preservation and the balance of ecosystems along with the increasing utilization of natural resources by humans in a sustainable way (Article 1 paragraph 2 of Indonesian Government Regulation No. 37 Year 2012 on Watershed Management).~~

40. Watershed management, which is part of regional development in Indonesia, is facing various problems such as the absence of integration among sectors, agencies, and regions. Asides from that, community participation has not been optimal yet so that the watershed sustainability is more worrisome. ~~The most visible impact of poor watershed management is illustrated by the condition of water resources in some areas in Indonesia (Bappenas, 2015).~~

Formatted: Font color: Auto

Formatted: Border: Top: (No border), Bottom: (No border), Left: (No border), Right: (No border), Between : (No border)

Formatted: Space Before: 6 pt, Line spacing: single, Border: Top: (No border), Bottom: (No border), Left: (No border), Right: (No border), Between : (No border), Pattern: Clear

⁴ Sheng, T.C. Watershed management field manual. Watershed survey and planning. In FAO Conservation Guide; Food and Agriculture Organization of The United Nations: Rome, Italy, 1990.

⁵ Jaringan Dokumentasi dan Informasi Hukum Kementerian Lingkungan Hidup dan Kehutanan. Available online: <https://jdih.menlhk.co.id>



Figure 1. Fact of Water Resources in Indonesia
Source: Bappenas, 2015

644. According to the framework of Watershed Management in Indonesia issued by the Ministry of Forestry Republic of Indonesia in 2009, watershed management fundamentally is a management or optimization of rational land use for various interests and other environmentally friendly practices, so that it can be assessed by ultimate indicators of quantity, quality, and continuity of river flow at watershed outlets. The results of research conducted by Mairi et al. (2014) show that the most appropriate form of the institution to be applied in integrated watershed management was a combination of polycentric and Monocentric. It required collaborative work such as the DAS/LK-PDAS forum (Institution of Watershed Management Coordination) at Provincial level whose members are the head of each agency in the region/OPD/ Sectoral Organization of Local Officials. This institution was non-structural and directly responsible to the Governor as the policy authority.

42.—The DAS/LK-PDAS Forum served as a forum for communication, consultation, and coordination among stakeholders in order to help the Governor formulate a watershed management policy across the districts. In 2013, the forum came into force as part of the government recognized watershed management by the issuance of Minister of Forestry Regulation Permenhut P.61 / Menhut III/ 2013 on the Watershed Management Coordination Forum. In the Renstra Document of Directorate General of Watershed Control and Protected Forest KLHK 2015-2019, 1 national level Watershed Management Coordination Forum, 3 inter-provincial Watersheds Forum, 40 watershed forums with governor's approval, 51 Watersheds Forum with regents/majors approval, and 14 watersheds forum with initiation of Non-Governmental Organizations/NGOs have been created. Nevertheless, considering the watershed-related budgeting is still dominated by the state budget, the role of BPDAS-HL and BWS is very important to realize the implementation of watershed management. The synergy of institutions, regulation and policy is the key implementation supported by input generated from watersheds forum which its capacity as a "think tank" is very important for more independent watershed management.

Land-Based Regional Development in West Java

743. The province of West Java (Jabar) has natural conditions with a complex geological

structure with mountainous areas in the middle and south and lowlands in the north. It has a forest area with the function of conservation forest, protection forest, and production forest whose proportion reaches 22.10% of the area of West Java; rainfall ranges from 2000-4000 mm/yr with a high level of rainfall intensity; has 40 watersheds (DAS) with a surface water discharge of 81 billion m³/year and groundwater 150 million m³/year (RPJMD 2013-2018: II-1).

~~844.~~ Based on RAD-GRK portrait data (Bappenas, 2012), West Java Province RAD-GRK emissions come from 3 (three) fields, namely: 1] Agriculture and Forestry, 2] Energy, Transportation, and Industry, and 3] Waste Management. The Land and Energy sector is the most significant contributor to GHG emissions in West Java (Bappenas, 2012), with 51% of GHG emissions coming from the land-based sector, while 47% comes from energy-based contributors, and the remaining 2% comes from waste management. Based on data from the Ministry of Environment and Forestry, the increase in greenhouse gas emissions in West Java Province is caused by increased land conversion, agricultural and livestock activities that are not environmentally friendly. Excessive use of fossil energy, unmanaged domestic waste is projected until 2030—reaching 135,212,417 tons of eCO₂ if there is no climate change adaptation and mitigation action.

~~945.~~ As a province with economic potential in the agricultural sector, West Java has around 912 thousand hectares of rice fields and produced approximately 9.5 million tons of rice in 2018; ~~the potential economic loss from the agricultural sector is predicted to reach 12 Trillion Rupiah in 2020-2024. The economic loss happened because, in 2020, natural disasters will be dominated by floods and landslides, which are 50%.~~

~~16.~~ Thus, West Java has the highest potential economic loss in the agricultural sector compared to 33 other provinces. [1] This is reinforced by a recent study published in the Journal of Agricultural Meteorology, which states that air temperature significantly influences rice harvests in West Java. At the same time, West Java contributes about half of Indonesia's rice production. ~~The agricultural sector is one of the seven leading sectors as a marker of the most advanced development of West Java in Indonesia in 2025 with a more intensive agricultural and marine management mission; [2] In its development, this sector is undoubtedly greatly influenced by the availability of land and other facilities and infrastructure, including climatic conditions and environmental carrying capacity. Ecological problems in West Java Province are marked by the excess of the carrying capacity and capacity of the environment, including the degradation of the quantity of water caused by excessive use of groundwater, the reduction, and the criticality of the catchment area (DAS) as a catchment area. And the reduced function of rivers as water resources due to pollution and sedimentation.~~

~~107.~~ Based on data from the Ministry of Environment and Forestry, the increase in greenhouse gas emissions in West Java Province is caused by increased land conversion, agricultural and livestock activities that are not environmentally friendly. Excessive use of fossil energy, unmanaged domestic waste is projected until 2030—reaching 135,212,417 tons of eCO₂ if there is no climate change adaptation and mitigation action. Various events/disasters caused by factors that cause climate change (drivers of climate change) that occurred in West Java have submerged and damaged agricultural land, settlements, community facilities, and infrastructure. From 2012 to 2021, the Regional Disaster Management Agency (BPBD) recorded floods in West Java, reaching 1,954 incidents and 5,662 landslides.

~~48.~~ To improve balance in economic growth and increase environmental carrying capacity, the Government has issued Presidential Regulation 87 of 2021 concerning Acceleration of Development of the REBANA⁶ and Southern West Java Regions (including Sukabumi Regency). The Presidential Regulation, among others, regulates sustainable development, namely:

⁶ Nomor 87 Tahun 2021 Judul Peraturan Presiden (PERPRES) tentang Percepatan Pembangunan Kawasan Rebana dan Kawasan Jawa Barat Bagian Selatan

- 1) Ensuring sustainable production and consumption patterns;
- 2) Take urgent action to address climate change and its impacts;
- 3) Protect, restore and promote sustainable use of terrestrial ecosystems, sustainably manage forests, stop desertification, restore land degradation, and stop biodiversity loss;
- 4) Strengthening inclusive and peaceful societies for sustainable development, providing access to justice for all, and building effective, accountable, and inclusive institutions at all levels.

3) Sukabumi Climate Change Condition

119. Sukabumi Regency has an area of 4,128 km², ~~and is the largest~~ ~~regency in West Java, and the second largest in Java and Bali.~~ From the Inarisk page of the National Disaster Management Agency, it was found that all areas in Sukabumi Regency have a high risk of being exposed to disasters. Disasters related to climate change that may occur and have a significant impact are floods, flash floods, landslides, and droughts. The four potential hazards are associated with the hydrological system. Hydrological extremes (floods and hydrological droughts) are natural hazards that are not confined to specific regions but occur worldwide and, therefore, impact many people.



Figure 2. Map of potential hazards in Sukabumi district

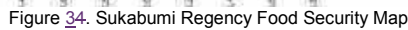
Formatted: Left

Annex 5 to OPG Amended in October 2017

Jenis Bencana	Luas Wilayah (Ha)	Jawa Tengah	Pada (Rp. Milyar)	Ekonomi (Rp. Milyar)	Lingkungan (Ha)
Gempabumi	395,169	2,646,436	21,173,239	12,020,972	0
Tsunami	6,719	66,947	540,917	156,659	9
Banjir	17,739	280,193	1,379,213	343,218	4
Banjir Bandang	17,344	215,936	1,369,717	438,754	23
Tanah Longsor	263,490	681,043	5,951,384	10,285,798	998
Letusan Gunungapi	3,007	338	22,075	6,724	2,338
Kebakaran Hutan & Lahan	170,281	0	0	4,839,300	2,488
Kekeringan	414,568	2,853,681	0	11,303,187	14,729
Cuaca Ekstrem	77,725	1,810,862	10,823,879	1,112,598	0
Gelombang Ekstrem dan Abrasi	10,494	121,082	403,237	126,516	4
COVID 19	38,795	1,478,047	0	0	0
Likuefaksi	5,988	68,709	108,709	97,462	0

Figure 23. Table of types of potential hazards in Sukabumi Regency

1220. The occurrence of floods, droughts, and landslides is closely related to the agricultural sector, especially in the Sukabumi Regency, where most people depend on income from the agricultural sector. Direct impacts of floods on crops and livestock can cause losses and reduce farm yields. Flood disasters can disrupt transportation networks and access to farms, food markets, and consumption points. Floods can cause financial loss to producers, suppliers, and consumers of food production, which could reduce individuals' capacity to afford food in communities.



22. The climate of the Sukabumi Regency, located at 6°43' 7"29' south of the equator, belongs to the tropical zone characterized by moderate air humidity, high rainfall, and moderate wind speed (Climate Type B1 Oldeman). The air circulation pattern mainly determines the distribution of temporary rainfall; from May to October, the dry east monsoon wind blows, and from November to March, the wet west monsoon wind blows. In the southern part of Sukabumi, the west monsoon usually blows earlier, at the end of September.

8

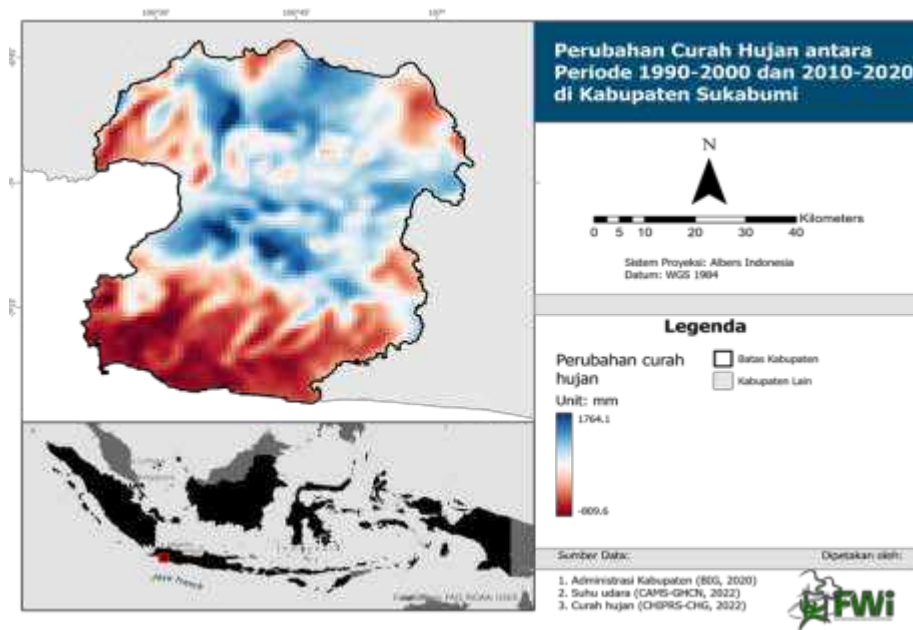


Figure 45. Rainfall map for 1990-2020 in Sukabumi Regency

1524. Data processed by FWI related to rainfall between 1990-2000 and 2010-2020 shows a very high anomaly of the highest and lowest rainfall in the Sukabumi Regency. The average normal rainfall in Sukabumi Regency is 278.88 mm. However, the data shows that the highest rainfall in Sukabumi Regency is 1764.1 mm, and the lowest is minus 809.6 mm. This indicates that during the rainy season, rain can be very high, and during the dry season, very dry.



Figure 56. Anomalies of rainfall in Sukabumi Regency

1625. Rainfall data from 1990 to 2020 shows that rainfall anomalies often occur. The reasonably high anomaly occurred in May 2008 and February 2017. But based on the graph-based graph, from 1990 to 2020, there has always been an anomaly in rainfall in Sukabumi Regency.

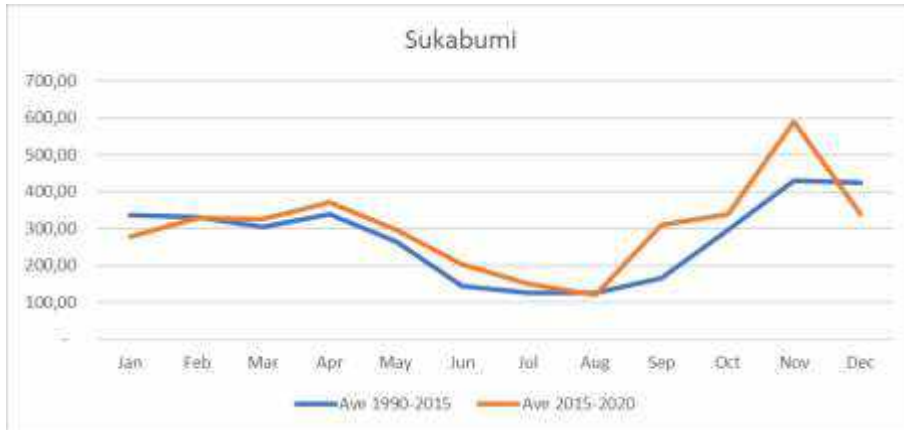


Figure 57. Patterns of wet and dry months in Sukabumi District

1626. The spatial distribution of rainfall is mainly determined by the altitude of the location and geographical conditions. The highest rainfall (>3500 mm per year), was recorded in northern Sukabumi, around the slopes of Mount Gede Pangrango and Mount Halimun-Salak, Ciemas District, east of Teluk Pelabuhan Ratu. Sukabumi has an average rainfall ranging from 3000-4000 mm/year at the foot of the volcano in the north and the south. Areas located north and south of the Cimandiri River have the lowest average annual rainfall ranging from 2000–3000 mm/year. Based on the Koppen classification system, Sukabumi Regency belongs to the Af climate type. Sukabumi Regency has the lowest air temperature of 23.6°C, with the coldest month temperature of more than 18°C in February, July, August, and December. The seasonal pattern follows a monsoonal pattern with an average rainfall of 64 mm in the driest month and 4074 mm/year.

1727. The rainfall variability can cause several problems, such as floods and droughts. The variability of rain in recent years has significantly impacted the community (Sudarma and As-syakur, 2018). Based on data on changes in rainfall in Sukabumi, Agriculture is highly vulnerable to the impacts of climate change with an indication of high hazard levels in the decline of rice production due to rising temperatures and changes in rainfall patterns. In 2015 the El Nino event caused a drought which had an impact on decreasing rice productivity (Salman, 2016). Furthermore, a lack occurred at the end of 2019 due to the Dipole Mode phenomenon, whose effect was almost similar to the 1997 and 2015 El Ninos (Lu and Ren, 2020).

1828. In 2015 the El Nino event caused a drought which had an impact on decreasing rice productivity (Salman, 2016). Furthermore, a lack occurred at the end of 2019 due to the Dipole Mode phenomenon, whose effect was almost similar to the 1997 and 2015 El Ninos (Lu and Ren, 2020). Pribadi (2012) stated that the combined phenomenon of El Nino (La Nina) and Dipole Mode affects the back and forth and the length of the dry season. El Nino causes drought, and La Nina causes increased rainfall in the region. The results of Apriyana and Kailaku's (2015) research suggest that rainfall variability affects the dynamics of backward planting time by 2-6 basics in monsoon areas and does not affect planting time in tropical regions. The rainfall variability in Indonesia causes shifts in the rainy and dry seasons (Aldrian, 2016); this increases the risk of crop failure due to increased flooding and drought events (King et al., 2016; Rochdiani et al., 2017). The rainfall anomaly in recent years has significantly impacted rice production due to a decrease in planted area, harvested area, and yields (Surmaini & Runtunuwu, 2011).

29. Based on data on changes in rainfall in Sukabumi, Agriculture is highly vulnerable to the

impacts of climate change with an indication of high hazard levels in the decline of rice production due to rising temperatures and changes in rainfall patterns.

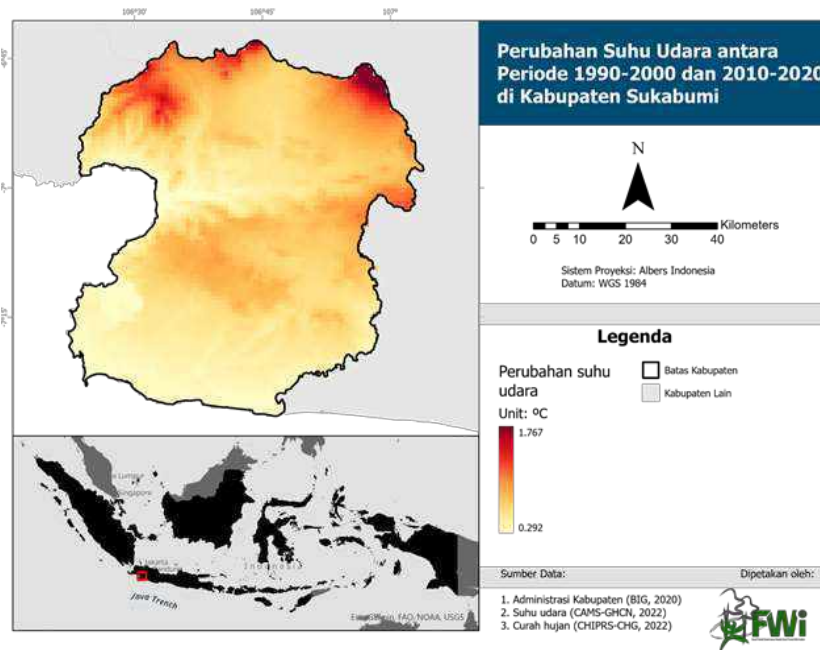


Figure 68. Changes in air temperature in Sukabumi Kabupaten

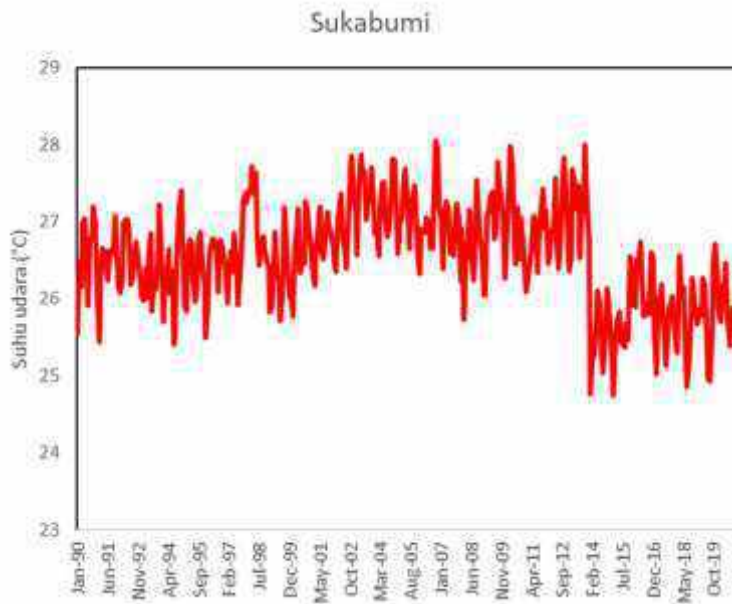


Figure 79. Anomalies of air temperature in Sukabumi Regency

19230. The trend of air temperature in Sukabumi based on CAMS-GHCN data shows a relatively significant increase. From 1990 to 2020, the rise in air temperature in Sukabumi was recorded at 1.767 °C. This means that the average temperature increase in Sukabumi every decade can reach 1.7 °C. The temperature change data processed by FWI shows that the temperature comparison between 1990-2000 and 2010-2020 offers a temperature anomaly in the $\pm 1.7^{\circ}\text{C}$ range. The increase/decrease in temperature can affect the balance of ecosystems, agricultural productivity, fishing potential, and the biodiversity that lives in Sukabumi.

4) Cimandiri Watershed Management Conditions

2034. Cimandiri watershed is located in the north and south of Sukabumi Regency. Along the Cimandiri River, there are five irrigation areas supporting rice/paddy farming, with an area of 1,910 ha. This amount does not include irrigation, clean water, and PDAM, which are sourced from the Cimandiri tributary. The Citarik River, upstream in the Kabandungan District, Mount Halimun Salak National Park (TNGHS), has become a tourist/rafting destination and has spawned local athletes who won the General Champion in the 2022 World Rafting Championship in Bosnia in 2022 and several athletes in other championships. Meanwhile, the flow of the Cicatih River, one of which is located in the Kalapanunggal sub-district (TNGHS), is one of the water sources for the Ubrug PLTA, one of which uses electricity for the energy needs of the Jakarta railway (KRL cross Jatinegara-Tanjung Priok).

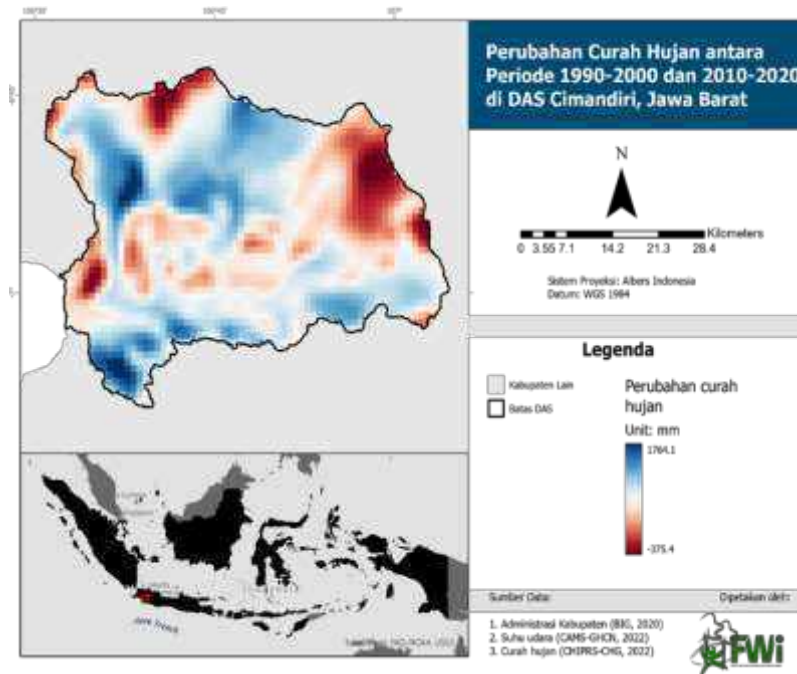


Figure 840. Analysis of changes in rainfall compared to 2 decades

2132. Forest Watch Indonesia (FWI) published data on rainfall analysis in the Cimandiri watershed, comparing 1990-2000 with 2010-2020. The highest increase in rainfall in the Cimandiri watershed is around 1,764 mm per year, with the lowest reduction in the rain up to -375 mm. ~~The average normal rainfall in the Cimandiri watershed is xx mm per year.~~ This means a significant increase in the addition of precipitation in the Cimandiri watershed area. Climate change can indeed cause changes in rainfall patterns. The tendency of rainfall intensity that is higher than average rainfall will cause floods and landslides⁷.

⁷ Meiviana, A., D.R. Sulistiowati, dan M.H. Soejachmoen. 2004. Bumi Makin Panas. Ancaman Perubahan Iklim di Indonesia. Kementerian Lingkungan Hidup Republik Indonesia dan Yayasan Pelangi Indonesia. Jakarta. 65 Hlm.
13

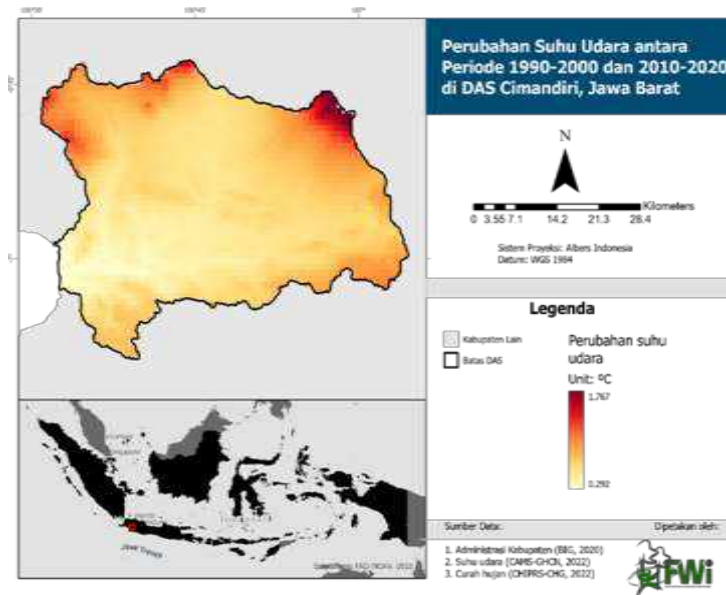


Figure 944. Comparison of changes in air temperature between decades in the Cimandiri watershed area

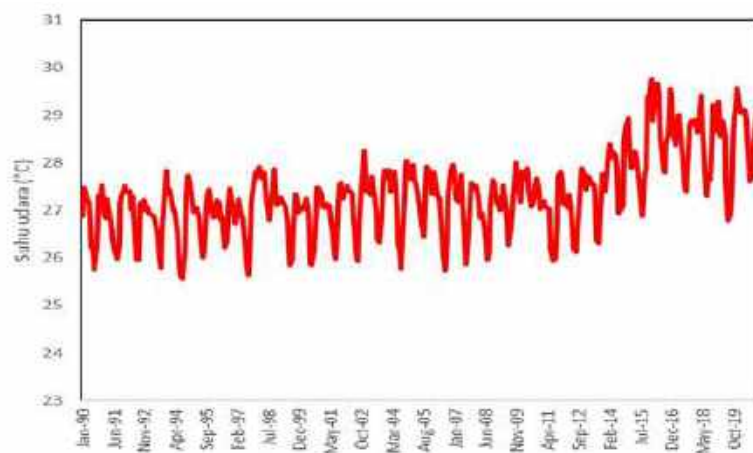


Figure 1042. Anomaly of temperature in Cimandiri Watershed

2233. The increase in temperature is the impact of global climate change. FWI analysis in the Cimandiri watershed area shows a change in temperature between the decades 1990-2000 and 2010-2020, with the highest increase of up to 1.7 °C and the lowest increase of 0.29 °C. The highest increase was seen in the northern part of the Cimandiri watershed area, and the lowest increase was in the central and southern regions. This increase can also be seen in figure 12, where there was a significant increase in temperature after 2015, when the average

temperature was around 29 °C.

~~34.~~ Differences in temperature and rainfall can affect the pattern of wet and dry months if there is a decrease in rainfall and an increase in temperature. In the Cimandiri watershed ecosystem, the possibility of excessive rainfall during the rainy season and a lack of rain during the dry season can result in reduced watershed water flow, which will result in community agricultural activities.

5) Conservation and Rehabilitation of Critical Lands as an Adaptation Step

~~23~~³⁵. Rehabilitation of critical land is one of the primary forms of adaptation in improving and restoring the condition of land threatened with damage and causing disasters and socio-ecological crises to its original state and improving. Usually, these lands are damaged due to deforestation, and other extractive activities carried out by humans cause harmful and destructive effects. Thus, the critical land can threaten the survival and cycle of living space of living things as a whole.

~~24~~³⁶. Critical land rehabilitation in Indonesia has many of the best examples, ~~such as the central government program through the rehabilitation of the Citarum River (through the Citarum Harum project), community based critical land restoration in the former Timah Mining Land in Juru Seberang Village, Belitung, and restoration of critical land in Wanagama Forest by the Gadjah Mada University campus. (the experimental interest for the Faculty of Forestry resulted in the restoration of critical land, attracting tourists and becoming a source of livelihood for the community).~~

~~37.~~ In its journey, the Sajogyo Institute, in its research in 2009, found one of the best practices for recovering critical land carried out by the Kajarkajar Local Farmers Organization (Organisasi Tani Lokal/OTL) in Neglasari Village Tasikmalaya Regency. OTL occupied land for Perhutani land area of 310 hectares. The condition of the occupied land has been criticized because it is already in an arid state due to the harvest of Perhutani trees, which the company no longer replants. Of the land area, only 125 hectares were redistributed to OTL member farmers as the Cultivated Zone. The rest of the land is divided into Conservation Zone, Group Garden Zone, Settlement Zone, and Cemetery Zone.

~~25~~³⁸. Interestingly, OTL is mapping and trying to restore arid-occupied lands. Realizing that the land is in a critical condition and will cause ecological disasters (floods, droughts, and landslides) that affect farming work, OTL has created a Conservation Zone. OTL planted trees in the Conservation Zone with Picung, Dadap, and Waru species. After the Conservation Zone had been created, the water supply for irrigating rice fields in the Garapan Zone was abundant. The conservation zone has provided a water source for farming and basic needs for the community in Neglasari Village and its surroundings.

6) Potential of Agroforestry & AgroSilvopasture

~~26-39.~~ Food products from forests, especially those included in the palawija group (seven food crops), have been cultivated and produced by communities around the forest for a long time in the context of forest management that has been carried out so far. But so far, it is not known precisely how much is produced. This is due, among other things, to the weakness of data collection and recording of the resulting production.

~~40.~~ Looking at the land/forest as a community agricultural cultivation area in the Cimandiri watershed area, it is necessary to have a method to restore the function of an open conservation area so that it is similar to the function of a natural forest. The agroforestry

system, through mixed cropping patterns that can provide ecological and economic functions, is believed to be able to restore the function of natural forests. The selection of plant species that have environmental value is intended as a land restoration activity. ~~In contrast,~~ the types of plants with economic value aim to increase people's income, apart from the kinds of plants that have been cultivated (intensification). ~~Including~~ the development of silvopasture that can integrate agricultural cultivation activities with animal husbandry. In the end, there will be sustainability in environmentally friendly agricultural patterns through using natural fertilizers from livestock activities. In addition, the diversity of plant species selected to be planted in this agroforestry cropping pattern will balance the ecosystem (Hayati et al., 2009). Thus, agroforestry can have a direct ecological and economic impact on protected areas and conservation of water catchment areas, and the community's economy.

2744. Currently, there are several activities carried out by Absolute Indonesia and its partners to empower communities in the northern area of the Cimandiri watershed, especially those within the Mount Halimun Salak National Park (TNGHS) area to carry out restoration, increase capacity and carry out maintenance activities. Community business development. This effort was carried out together with the TNGHS Center through a Cooperation Agreement between Absolute Indonesia and the Mount Halimun Salak National Park Office Number: PKS.2141/T.14/TU/KUM.3/12/2020 and Number: 001/ABS/ PKS-TNGHS/XII/2020 concerning Cooperation in Strengthening the Functions of Mount Halimun Salak National Park through Community Empowerment Activities (conservation partnerships), for five years (2020 – 2025). The cooperation is carried out in an area of 1,801.95 ha spread across Kabandungan District (Cipeuteuy Village, Cihamerang, Mekarjaya, Cianaga, Kabandungan) and Kalapanunggal District (Pulosari Village and Gunung Endut).

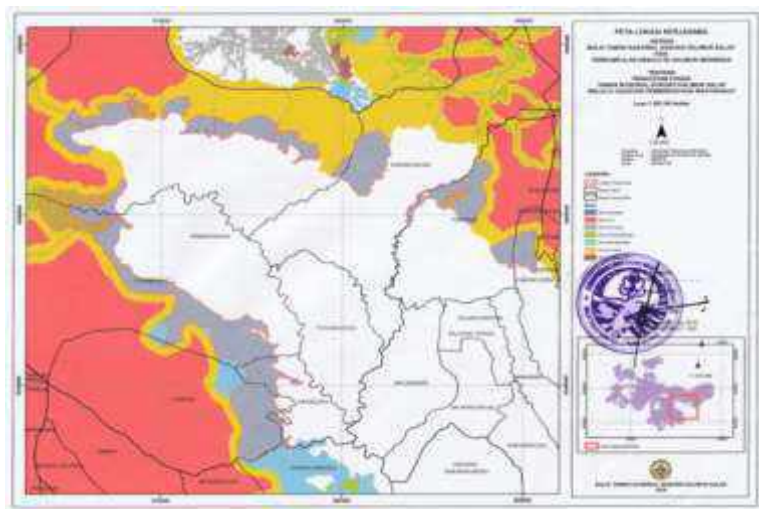


Figure 113. Map of the location of the conservation partnership cooperation

2842. From 2020 to 2021, assistance has been carried out on 14 Forest Farmer Groups (KTH) with 1,217 family members and 4,899 direct beneficiaries in locations covering an area of 878.34 ha in Cipeuteuy, Mekarjaya, Cianaga, and Pulosari villages. A series of activities have been carried out together with the 14 KTHs, including capacity building and cultivation techniques through the agroforestry system. However, farmer groups have not entirely carried out agricultural practices through agroforestry techniques in the field. This is because there

are still limitations in providing seeds, including the budget for a series of facilitation processes.

2943. Agricultural development through agroforestry techniques that is already underway is the development of coffee plantations.~~Agricultural development through agroforestry techniques that have been running is the type of coffee.~~ This effort was also developed by involving the youth community and microfinance institutions (cooperatives) by constructing a coffee learning house <https://absoluteindonesia.id/2019/03/03/rumah-learning-kopi-cipeuteuy/>, which so far has been successful. Manage the coffee business from upstream to downstream, including its marketing <https://www.tokopedia.com/absolutecoffee>.

3044. There is better lessons learned from the implementation of activities on building 14 Forest Farmer Groups (KTH), including: 1] KTH gains certainty access to area management within national park through a conservation partnership program with Taman Nasional Gunung Halimun Salak (BTNGHS), with certainty legal access to the managed area can minimize conflicts between communities with BTNGHS; 2] The strong social relationship between supporting organizations and farmers who are currently members of 14 KTHs, has a significant effect on the achievement of project implementation; 3] KTH has succeeded in increasing knowledge about coffee cultivation; 4] KTH has market certainty for coffee products through cooperation with Absolute Coffee; 5] Strong efforts are needed to facilitate KTH in building mutual understanding and agreement on conservation partnerships with the TNGHS Office; 6] The limited number of people involved in capacity building, which only 2 people from each KTH and with a short duration of implementation, cause resulting in slow and ineffective knowledge transfer; 7] Land restoration/rehabilitation efforts through planting tree species with ecological and economic value (fruit trees) cannot be carried out comprehensively due to the limited number of certified (bibit unggul) seeds; 8] Planting fruit trees that are not certified will have the potential to fail to harvest, thus encouraging farmers to re-cut the planted trees.

3145. For the southern area of the Cimandiri watershed, forest management is carried out through Community Forest Management (PHBM), which began in 2005 with the legal basis of Perum Perhutani Board of Directors Decree No. 136/Kpts/Dir/2001 concerning PHBM Guidelines, Sukabumi Regency Regulation No. 13 of 2003 regarding PHBM, and Sukabumi Regent Decree No. 407 of 2004. Based on this legal basis, the Forest Village Community Institution (LMDH) was formed from 2005 - 2008. These LMDH-LMDH accommodate forest communities in the context of their participation in forest management with Perhutani. In this PHBM program, various activities are carried out and involve the community; one of these activities is the intercropping system activity. In this intercropping system activity, the community can plant food crops between plant stands, where the results are expected to be used to meet their daily food consumption needs.

Program Targets and Locations

3246. This project will be implemented in 15 villages, five sub-districts, Sukabumi regency, and the West Java province. The targets of this program are groups of vulnerable farmers and women who depend on the land and/or forest areas for their livelihoods.

Table 1. Population in 15 Villages and Its Potential Hazard

No.	Sub-District	Village	Male	Female	Population	Hazard Potential
-----	--------------	---------	------	--------	------------	------------------

Formatted: Font: 10 pt

Formatted: Font: 10 pt

Formatted: Font: 10 pt

Formatted: Font: 10 pt

Formatted: Font: 10 pt

Formatted: Font: 10 pt

Formatted: Font: 10 pt

Formatted: Font: 10 pt

Formatted: Font: 10 pt

Formatted: Font: 10 pt

Formatted: Font: 10 pt

Formatted: Font: 10 pt

Formatted: Font: 10 pt

Annex 5 to OPG Amended in October 2017

						(Inarisk)
1.	Simpanan	Cidadap	7.822	7.636	15.458	
2.	Simpanan	Cibuntu	2.387	2.339	4.726	High
3.	Simpanan	Mekarasih	2.779	2.779	5.558	
4.	Geger Bitung	Ciengang	2.018	2.006	4.024	
5.	Geger Bitung	Sukamanah	1.774	1.770	3.544	High
6.	Geger Bitung	Caringin	3.619	3.652	7.271	
7.	Kalapa Nunggal	Pulosari	4.825	4.623	9.448	
8.	Kalapa Nunggal	Gunung Endut	4.471	3.984	8.455	High
9.	Cikidang	Gunung Malang	2.151	2.127	4.278	High
10.	Kabandungan	Mekarjaya	1.834	1.979	3.813	
11.	Kabandungan	Tugu Bandung	5.046	4.806	9.818	
12.	Kabandungan	Kabandungan	4.278	4.152	8.430	High
13.	Kabandungan	Cipeuteuy	3.911	3.664	7.575	
14.	Kabandungan	Cihamerang	3.967	3.549	7.516	
15.	Kabandungan	Cianaga	3.230	3.121	6.251	
Jumlah Total			54.112	52.187	80.376	

[illegible]

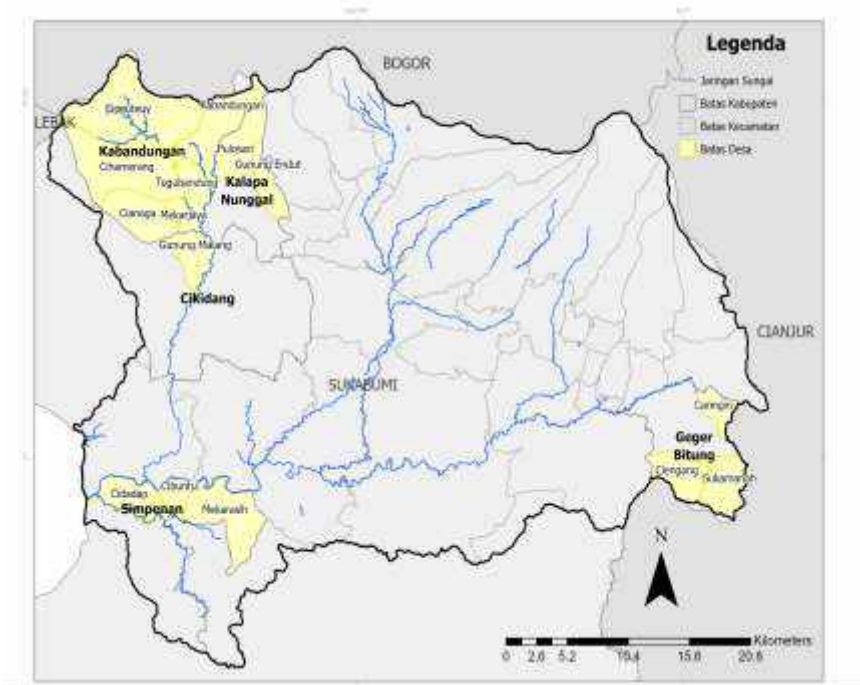


Figure 124. Program Location Map



Figure 15. Landscapes of Cipeuteuy Village in Kabandungan Sub-district

Project / Programme Objectives:

Formatted: Indent: Left: 0"

Project / Programme Objectives:

3347. This project aims to improve the adaptation of farming communities that depend on forest areas as water catchments, vulnerable to the impacts of climate change and natural disasters, through the management of the Cimandiri Asri Watershed (Sustainable Cimandiri Management). This project mainstreams capacity building of farming communities to implement climate change adaptation and supports and guarantees regulatory/policy principles based on the pillars of sustainable development. This project will be implemented through 3 critical components, namely:

- 1) Increasing the adaptive capacity of farming communities in dealing with climate change for economic resilience through climate-smart agricultural management so that they can increase carrying capacity and maintain a balance of economic and ecological functions of the land
- 2) Collective Adaptation Actions related to ecosystem restoration that all stakeholders can carry out with interest in the sustainability of the Cimandiri Watershed
- 3) Policy Advocacy to support and ensure the guarantee of fair and sustainable Cimandiri watershed management for natural and sustainable elements for future generations

1.B. Project / Programme Components and Financing:

3448. In accordance with the main objectives as described above, the formulation of project components, expected concrete outputs, expected outcomes consider as well the direction of Adaptation Fund in Indonesia that described in part 1.A above. The directions include:

1. The adaptation element of Indonesia Updated NDC which describe the 18 key programs to increase economic, social, ecosystem and landscape resilience;
2. The implementation of presidential regulation on Carbon Economy Value which prioritize 6 (six) adaptation fields and instruct the identification of impacts and actions, baseline and targets, planning – implementation – monitoring and evaluation, and implementation at provincial and regency level involving stakeholders engagement;
3. The implementation of Ditjen PPI's Strategic Plan particularly the Disaster and Climate Change Resilience Program which prioritizes vulnerability data, local adaptation strategy, and extension of climate village.
4. Regulation about watershed
5. Regulation about land rehabilitation and conservation

3549. The direction highlights as well the community-based business development aims to increase the income of villagers and the economic capacity of communities which significantly raise the adaptive capacity of vulnerable communities. Part of grants will be managed as financial assistance for farmers groups to initiate or scale up their businesses, including through revolving fund schemes.

Project/Programme Components	Expected Concrete Outputs	Expected Outcomes	Amount (US\$)
1. Increasing the adaptive capacity of the community for economic resilience	1.1.1. Collaborative Action Research	1.1. Collaborative adaptation action strategy with the community	210,000
	1.1.2. Socio-ecological-economy analysis report		
	1.1.3. Document adaptation action strategy		
	1.2.1. The capacity for adaptability and management of the 14 KTH natural resource area increases	1.2. Increased knowledge, adaptability and economic resilience of the community	
	1.2.2. Capacity and technical knowledge related to climate-smart agro silvopasture and agroforestry in 14 KTH have increased		
	1.2.3. Capacity of 14 KTH related to economic institutions		
2. Collective Adaptation Actions related to ecosystem restoration	2.1.1. Critical land in the Watershed rehabilitated	2.1. Ideal watershed management (Law 32 of 2009)	310,925
	2.1.2. Community-based climate-smart agro-silvopastoral and agroforestry practices		
	2.1.3. Climate change adaptive task force		
3. Policy Advocacy	3.1.1. Cross-sector collaborative forum	3.1. Establishment of a watershed-based and collaborative community-based protection system for living space and livelihoods	280,000
	3.1.2. RAD-API		
	3.1.3. Information Systems		
	3.1.4. RTL document and replication		
6. Project/Programme Execution cost			84,075

Annex 5 to OPG Amended in October 2017

7. Total Project/Programme Cost	885,000
8. Project/Programme Cycle Management Fee charged by the Implementing Entity (if applicable)	75,225
Amount of Financing Requested	960,225

- Formatted: Font: 10 pt
- Formatted: Font: 10 pt
- Formatted: Font: 10 pt
- Formatted: Font: 10 pt
- Formatted: Font: 10 pt
- Formatted: Font: 10 pt
- Formatted: Font: 10 pt
- Formatted: Font: 10 pt
- Formatted: Font: 10 pt
- Formatted: Font: 10 pt
- Formatted: Font: 10 pt
- Formatted: Font: 10 pt
- Formatted: Font: 10 pt
- Formatted: Font: 10 pt

1.C. Projected Calendar:

Table 3. Projected Calendar

Milestones	Expected Dates	Expected Duration
<ul style="list-style-type: none"> Start of Project/Programme Implementation 	January, 2023 to November, 2025	23 months
<ul style="list-style-type: none"> Mid-term Review (if planned) 	January, 2025	1 month
<ul style="list-style-type: none"> Project/Programme Closing 	December, 2025	-
<ul style="list-style-type: none"> Terminal Evaluation 	December, 2025	1 month

PART II: PROJECT/PROGRAMME JUSTIFICATION

A. Project Contribution to Increase Resilience

~~3650.~~ Climate change has resulted in increased rainfall and rising temperatures in Sukabumi Regency. ~~These factors is incident are is one of the factors~~ causing landslides, floods, and droughts, which have an impact on crop and harvest failures on community agricultural land. ~~Climate change has resulted in increased rainfall and rising temperatures in Sukabumi Regency, this incident is one of the factors causing landslides, floods, and droughts which have an impact on crop and harvest failures on community agricultural land.~~ The worst case has even resulted in the destruction and loss of agricultural land and community facilities and infrastructure. This project as a whole aims to improve the adaptation of farming communities that depend on forest areas as water catchments, who are vulnerable to the impacts of climate change and natural disasters, through the management of the Cimandiri Asri Watershed (Sustainable Cimandiri Management), which consists of 3 program components:

Component 1: Increasing the adaptive capacity of farming communities in facing climate change for economic resilience, through climate-smart agricultural management to be able to increase carrying capacity and maintain a balance of economic and ecological functions of the land

~~3751.~~ Capacity building in dealing with climate change will become new knowledge at the level of the farming community, as well as will build collective awareness in adapting to climate change ~~that occurs~~. Based on data from the Regional Secretariat of Sukabumi Regency, ~~so far~~ the attention of the Regional Government tends to be greater on mitigation actions so that the community does not have the provisions to carry out adaptation actions. This capacity building will reach vulnerable farming communities at the site level, as well as the young generation and women who will directly become the main actors in carrying out research on social, economic, and ecological issues in their respective regions, along with the capacity building materials ~~provided~~~~provided given~~. This training will also involve the local government at the village ~~and~~ sub-district ~~level, and related agencies in the district~~. Analysis of existing social systems and structures is needed, so that this project understands the target based on social stratification/class, gender, age, knowledge capacity as well as certain relevant skills, available social capital, and social/cultural barriers. This process will determine the accuracy in carrying out engagement, which subjects require empowerment and power of attorney. Strengthening the ~~economy~~~~economic of the community~~~~of community~~ is necessary, by the social modalities owned by the community. Identifying or reviving the availability of social modalities will guide the operation of economic capital that comes from outside/donors. A collective economy with emphasis on ecological practices has always been a prerequisite for a solidarity economy. ~~This principle will eliminate the potential for individualism in the community.~~

~~3852.~~ The involvement of the parties in the implementation of capacity building will automatically build communication and coordination, as well as mutual understanding and strategy regarding the importance of climate change adaptation actions at the regional level. There are 2 outcomes to ensure these components run, namely outcome 1.1 A collaborative adaptation action strategy with the community, in which the outputs to achieve these outcomes are 1.1.1. Collaborative Action Research; 1.1.2. Socio-ecological analysis report; 1.1.3. Adaptation action strategy document. In addition, the second outcome in this component is 1.2 Increased knowledge, adaptability, and economic resilience of the community, so that the output to achieve this outcome is 1.2.1 The capacity for adaptability and management capacity of the 14 KTH SDA is increased; 1.2.2 Capacity and technical knowledge related to agro silvopasture and climate-smart agroforestry in 14 KTH have increased; 1.2.4 Capacity of 14 KTH related to economic institutions.

Component 2. Collective Adaptation Actions related to ecosystem restoration

3953. This ecosystem restoration action will be carried out on an area of 1,800 hectares managed by KTH, through planting tree species that have economic and ecological value with agroforestry and agro-silvopasture systems, as climate-smart agriculture systems. Agroforestry and silvopasture systems will directly ~~impact increasing~~~~impact towards increasing~~ the economy and ensuring the sustainability of land/forest functions as water catchment areas. Ecosystem restoration will also be carried out on the banks or riparian areas of the river, in the upstream, middle, and downstream areas of Cimandiri Watershed, along 50 km. This planting action will involve various parties from the government, youth and women communities, civil society groups, environmental activists, and the community. To ensure ecosystem restoration can proceed according to plan and ensure sustainability, so will a climate change adaptive task force be formed whose members also come from government elements, youth and women's communities, civil society groups, environmentalists, and society.

4054. Outcome to ensure that component 2 implemented is 2.2. Ideal Watershed management (Law 32 of 2009), so that the outputs to achieve this outcome are: 2.1.1 Rehabilitation of critical land in the Watershed; 2.1.2 Community-based climate-smart agro-silvopastoral and agroforestry practices; 2.1.3 Climate change adaptive task force.

Component 3. Policy Advocacy

4155. Policy advocacy will be carried out to encourage the appearance of Regional Action Plans related to Climate Change Adaptation (RAD-API), where currently the District does not yet have such an action plan, even though in 2012 the West Java Provincial Government issued Governor Regulation No. 56 of 2012 concerning Regional Action Plans. Greenhouse Gas Reduction (RAD-GRK) West Java Province. The plan for the preparation of the RAD-API has been previously communicated to the Regional Secretary of Sukabumi Regency, during the consultation event in the preparation of the draft adaptation note for the fund. Technically, the preparation of this action plan will involve a cross-sectoral collaborative forum, which will be formed as a forum for communication, coordination, and sharing of learning together in saving the Cimandiri Watershed, as well as other elements, including from associations or companies as beneficiaries of the existence of the Cimandiri Watershed.

4256. To disseminate information about climate change, an information system will be built that will be useful for farmers and the wider community in running businesses (economic development) that are vulnerable to climate change. This information system will also support the provision of data and information SIBERALAM (Natural Resources Information System) which is currently under development by the Regional Secretariat of Sukabumi Regency. The information system that will be developed also becomes a database and learning information (knowledge management), so that it will assist stakeholders in program development and replication. In addition, this activity component will also prepare a joint document related to the follow-up plan, as a technical guide for each side in carrying out the climate change adaptation action plan.

4357. Outcome to ensure component 3 are 3.1 Establishment of a collaborative Watershed-based and community-based protection system for living space and livelihoods, with outputs to achieve these outcomes: 3.1.1 Cross-sector collaborative forum; 3.1.2 RAD-API; 3.1.3 Information systems; 3.1.4 RTL document and replication.

B. Economic, Social and Environmental Benefits

4458. This project will help improve the adaptive capacity of the community, so that sustainable management of the Cimandiri Watershed can be carried out based on a partnership between the National Park and the community. Initiated interventions build on:

1. Socio-economic-ecological integration system, through increasing the adaptive capacity of the community. The daily life of the community with village institutions and the relationship with the National Park will directly affect the ecological management and economic welfare of the community.
2. Socio-ecological approach, by seeing that ecological and social aspects are dialectically related. The processes of conservation and rehabilitation of Watershed areas must begin with social intervention through local institutions.
3. An economic ecology approach, through a system of improving community welfare based on agroforestry and agro silvopasture business, is aimed at forest and land conservation measures in the Cimandiri Watershed.
4. Socio-economic approach, through the formation of collaborative and inclusive groups.

4559. The main target beneficiaries of this project are communities, local government institutions that have the authority to initiate adaptation actions to climate change, women's groups, disability groups, forest farmer groups, and youth groups. Capacity building in these groups targeted not only to create awareness of the impacts of climate change, but also to increase community knowledge about the benefits of forest and land management in Watershed areas, and how to increase economic resilience without causing damage to the environment. The project aims to involve as many local people as possible, however, the priority groups are:

- 1) Local communities most vulnerable to climate change.
- 2) Groups of forest farmers who have carried out activities or implemented agroforestry systems and horticultural farmers who have implemented conventional farming systems. This group must go through an awareness-raising process first, to help transform conventional farming systems into climate-smart and sustainable ones.
- 3) Women groups who play an important role in providing food to the table for her families. In rural remote areas, often this role includes producing and preparing the food, in addition to taking care of their children, husband, and elders. These groups need new innovations to be able support their family in sustainable ways and time-effective at the same time. Women should also be more involved in landscape management, hence their important role in food production. Therefore, a sustainable integrated farming system within the area should be improved and focused with these groups.
- 4) Youth groups to be involved in restoration projects, awareness and campaigns, developing sustainable livelihoods, and to make them part of the forest managers themselves. Particularly to engage them in the network of multi stakeholders forums, by considering as well that they are potential future leaders for protecting forest and ecosystem with essential function in Cimandiri watershed.
- 5) Marginalized groups such as people with disabilities and low social class are often forgotten in this process. But in order to enhance the result of this adaptation process, the inclusion of marginalized groups are crucial.

4660. As an effort to ensure the sustainability of the business carried out by farmers, the Ministry of Finance through the Government Investment Center (Pusat Investasi Pemerintah/PIP) which is a Public Service Agency (Badan Layanan Umum) in the form of an

ultra micro financing program, which was launched as a complement to the people's business credit program. In addition, the Ministry of Finance has also built the Indonesian Environment Agency (Environmental Fund Management Agency/BPDLH) which is currently operating in support of sustainable forest management issues, as well as community empowerment. These programs can be accessed by farmers who are ready and have capacity to manage the business. Thus, the project proposed to the Adaptation Fund will target institutional and business strengthening, as well as improving land governance, so that farmers are able and able to cooperate with financial institutions and other relevant parties.

4764. The benefits that will be obtained by the community/farmers from the implementation of this program are estimated as follows:

1. Community who do not have private land for agricultural activities, and they depend on the National Park area (upstream Cimandiri Watershed), who are members of 14 Forest Farmer Groups (Kelompok Tani Hutan/KTH), 1,217 Heads of Families (KK), 4,899 people, consisting of 2,594 men and 2,305 women.
2. Community who own less than 0.5 hectares of land in the middle and downstream areas of Cimandiri Watershed who depend on farming activities for their livelihood
3. Vulnerable communities and farm laborers, as many as 1,641 people or 5 percent of the total Heads of Families (KK) in 15 villages
4. People who have an average income below the Regional Minimum Wage (UMR) of Sukabumi District, as many as 2,858 people spread over 15 villages
5. Women who do not have income and access to the economy, as many as 1,033 people or 2 percent of the total number of women spread over 15 villages
6. 15 groups (Family Welfare Development/PKK), namely apparatus or women who are at village government representing of women, and 15 representatives of youth groups and women in 5 sub-districts
7. 3 Farmer groups in Simpenan sub-district, through climate-smart farming practices as an effort to improve water catchment areas in the central area of the Cimandiri watershed.
8. 150 representatives from 15 villages will become the Adaptive Task Force whose membership comes from the youth groups, women and representatives of the village government.
9. 300 people from village, sub-district and district government representatives, as well representatives from youth and women groups who will be involved in cross-sectoral forums related to climate change adaptation.
10. Communities in 11 sub-districts that are traversed by rivers and tributaries of Cimandiri River as beneficiaries of information systems related to climate change, which will be a reference in determining planting and harvesting calendars.
11. District, Sub-districts and Village Governments, will benefit from the preparation of the Regional Action Plan-Climate Change Adaptation (RAD-API) and the Follow-Up Plan (RTL) document and replication, so that there will be mutual benefits between the government and the community in climate change adaptation, through the Cimandiri watershed program and community economic strengthen, as well as financing the planned adaptation actions, including sustainability programs from local, provincial and central government.

4862. Meanwhile, to ensure the management of community businesses carried out in forest areas, the government has regulated forestry partnerships within conservation areas in the form of conservation partnerships (kemitraan konservasi), as contained in Article 204 of Government Regulation (PP) Number 23, 2021. The government has also strengthened this guarantee through the regulation of Article 110 B PP Number 24, 2021 which explains about the exception of the imposition of sanctions for people who have managed conservation

Formatted: Indent: Left: 0.25", Hanging: 0.25",
Outline numbered + Level: 1 + Numbering Style: Bullet
+ Aligned at: 0.25" + Indent at: 0.5"

land/forest, the area of which is under 5 hectares and the management period is more than 5 years.

4963. The technical arrangements for the partnership have been regulated through Minister of Environment and Forestry Regulation Number 9, 2021 concerning Social Forestry Management, one of which regulates forestry partnerships through conservation partnership schemes and Regulation of the Director General of Natural Resources and Ecosystem Conservation (Perdirjen KSDAE) Number 6, 2018 concerning Guidelines Conservation Partnership in Nature Reserve Areas and Nature Conservation Areas.

C. Cost Effectiveness

5064. The proposed Adaptation Fund (AF) budget is prepared based on consideration of ~~program effectiveness~~~~program the effectiveness~~ and sustainability after project funding ends, based on all project components, outcomes and outputs designed to increase community resilience in the face of climate change at various levels.

5165. Financing related to Component 1: Increasing the adaptive capacity of farming communities in facing climate change for economic resilience, through climate-smart agricultural management so as to increase carrying capacity and maintain a balance of economic and ecological functions of the land, will provide direct benefits to communities in 15 villages in 5 districts. Direct benefits from increasing knowledge and management of farming through agroforestry and silvopasture systems will be obtained by 1,217 families and 4,899 people living in upstream areas. Benefits related to capacity building in conducting research related to social, economic and ecological issues will be obtained by 15 communities of the younger generation and women located in 5 sub-districts.

5266. Financing related to Component 2. Collective Adaptation Action related to ecosystem recovery, will provide direct benefits for improving the ecological function of land/forest by planting tree species in an area of 1,800 hectares and providing economic benefits to 1,217 Families and 4,899 people living in the area. upstream, as well as indirect benefits for 31,365 communities in the upstream and middle of the Cimandiri Watershed. The direct benefits of increasing water catchment areas through climate-smart farming practices can be directly felt by communities in 3 villages in Simpenan District. The direct benefits of the ease of coordination and communication related to climate change adaptation will be directly felt by the community in 15 villages, for the involvement of their representatives in the climate change adaptation task force.

5367. Financing related to Component 3. Policy Advocacy, will provide direct benefits to 1,217 families and 4,899 people for certainty of access to managed land, as well as legal guarantees for business management carried out in forest areas, as water catchment areas for the Cimandiri Watershed. Direct benefits from the establishment of cross-sectoral forums will also be obtained by communities in 5 sub-districts for the involvement of community representatives in the forums, as well as direct benefits from the information contained in the information systems related to climate change adaptation, so that it become one of the considerations for farming communities in determining the seasonal calendar (planting and harvesting).

5468. The benefits of this information system will also be felt by the community in 11 sub-districts along the Cimandiri river. The Village and Sukabumi District Governments will benefit from the preparation of the Climate Change Adaptation-Regional Action Plan (RAD-API) and the Follow-Up Plan (RTL) document, so that mutual benefits will be created between the government and the community in the Cimandiri and Cimandiri Watershed rescue program. Improvement of the community's economy, as well as financing of planned adaptation actions, including program sustainability sourced from local, provincial and central government program budgets.

5569. The outputs from this project are in line with government programs⁸ (central and regional) in developing a participatory and independent cultured village/village environment (*synergism between ecovillage and Kampung Iklim*), which has an impact on improving community welfare and watershed quality. This will open up opportunities to build future program collaborations.

D. Alignment with National and Sub-national Agenda

5679. To ensure the project aligned with national and provincial strategies and programs, and consistent with the agenda to increase climate change resilience this project developed by considering several related policies and regulations.

1. Law Number 16 of 2016 concerning Ratification of the Paris Agreement to the United Nations Framework Convention on Climate Change in the context of achieving the NDC target requires the implementation of climate change adaptation through mainstreaming sustainable development (SDGs), especially in areas that have high vulnerability.
2. Indonesia Updated NDC provides direction on the adaptation element with 18 key programs to increase economic, social, ecosystem and landscape resilience. This is related to the Regulation of the Minister of Environment and Forestry Number P.07 of 2018 concerning Guidelines for the Study of Vulnerability, Risk, and Impact of Climate Change and Regulation of the Director General (Perdirjen) LHK No. 04 of 2019 concerning Guidelines for Identification of Ecosystem-Based Climate Change Adaptations.
3. The Presidential regulation on the Implementation of Carbon Economy Value prioritizes 6 (six) adaptation fields and instructs the identification of impacts and actions, baseline and targets, planning - implementation - monitoring and evaluation, and implementation at provincial and regency level involving stakeholders engagement.
4. Ditjen PPI's Strategic Plan particularly within the Disaster and Climate Change Resilience Program encourages provincial and regency governments to prioritize the preparation of vulnerability data, local adaptation strategy, and extension of climate village.
5. Government Regulation of the Republic of Indonesia Number 37 of 2012 concerning Watershed Management, refers to the criteria for Watershed and plans for the preparation of Watershed management plans.
6. Law of the Republic of Indonesia Number 7 of 2019 concerning Management of Water Resources, refers to the management of Watersheds which are water resources.
7. RAN-API concerning of 3 objectives, namely economic resilience in food security sub-sector, ecosystem resilience, and adequate support system with emphasis on capacity building, development of reliable climate information, as well as research and development

E. Standard and Regulatory Compliance

5774. The conservation partnership relationship between the community and the Mount Halimun Salak National Park must comply with the Regulation of the Director General of Natural Resources and Ecosystem Conservation Number P.6/KSDAE/SET/Kum.1/6/2018 concerning Technical Guidelines for Conservation Partnerships in Nature Reserves and

⁸ Kebijakan Pengendalian Perubahan Iklim Jawa Barat 2018

Conservation Areas.

F. Complementary Funding Sources

~~5872.~~ In component 3 of the program to be implemented in the Cimandiri watershed, the result obtained 3.1. the establishment of collaborative communities and watershed-based living space and livelihood protection system as stated in output to 3.1.2. RAD-API of Sukabumi Regency and 3.1.3. An Information system whose implementation is funded by the Regional government of Sukabumi Regency. The role of this program is only as a provider of data and information on the socio-ecological conditions of the Cimandiri Watershed and recommendations for adaptation actions in accordance with the current conditions in the Cimandiri Watershed.

~~5973. This program does not duplicate with the other programs that have been funded by other donors and government at the target location. Funding from the Environmental Fund Management Agency (BPDH) and other funding sources, is used for institutional strengthening activities and building mutual understanding between the Forest Farmers Group and the Gunung Halimun Salak National Park Office (BTNGHS), as well as land mapping as one of the requirements to gain an access, through a conservation partnership agreement and also for social forestry program in Perhutani area.~~ Thus, funding support from the Adaptation Fund will continue or strengthen the ~~ouput~~activities that have ~~achievedbeen carried out~~ previously, including increasing group capacity, conducting the agroforestry and silvopasture system, building economic access and resilience to climate change.

~~6074.~~ In addition, the information system that will be built and developed through the Adaptation Fund will consolidate or provide data and information from participatory action research activities, climate smart farming, adaptation action documents and other data generated from the project activities, including information related to eco villages, which is easily accessible and widely used by the public. This information system also will support and provide the data and information, as well as integrate with the natural resource information system (SIBERALAM) which is ~~ongoing andongoing build and~~ developed ~~by the Sukabumi~~by Sukabumi district government.

G. Knowledge Management

~~6175.~~ To escalate the resilience of Forest Farmer Groups (KTH) in Sukabumi Regency in facing climate change, it is necessary to provide them with extensive knowledge about climate change adaptation. Thus, the capacity of farmers who are members of KTH could increase which makes them more resilient in facing climate change.⁷⁶ To face these challenges, there would be participatory research about the relation of social, ecology, and economy of community in facing climate change. Because it is participatory research, researcher team will work with members of a community to understand and resolve community problems, to empower community members, and to democratize research.

~~6277.~~ Within that research, a document module containing ~~information~~informations and data related to climate change adaptation and economic resilience would be produced. This module would be used as a tool for farmers to understand various things about climate change related to their activities in agriculture. ~~This module is written using popular language yet still based on scientific data therefore it is easily accepted by the farmers.~~ The module is designed to be accessible ~~for the public~~for public through the websites of each ~~consortium~~consortiums, local government websites, and disseminated through training activities. In the future, the module would also be distributed through an information system network at the village level, as an information sharing tool, and directly integrated with the Natural Resources Information System (SIBERALAM). ~~Besides that, this information system can be a coordination hub to exchange information between development partners, to avoid overlap, and also support synergies~~

between relevant initiatives. Thereafter, each dissemination related to community activities would be presented creatively, attractively, and easily accessible through social~~through the social~~ media.

~~6378.~~ In addition, it is necessary to strengthen the synergy between KTH and the Regional Government, both in substance and in technical aspects. This is necessary to build a common understanding in accomplishing land rehabilitation, as well as to escalate technical capacity in land management and the preparation of infrastructure for processing forest and land products. This synergy also requires the support of multi stakeholders, KTH, and also CSO's in a cross-sector collaborative forum.

H. Stakeholders Consultation

~~6479.~~ All program designs in the proposed project have gone through a series of discussions and consultations with relevant stakeholders, including:

1. The Regional Secretary of Sukabumi Regency and the Head of the Natural Resources Section, the Sukabumi Environmental Service, Expert Staff of the Regent for Development and the Economy, to consult the concept that has been designed and accommodate input regarding the possibility of program implementation and its sustainability. This consultation was held on 7 July 2022. In this discussion process, there is also a representation of women in quantity in order to promote justice and equality. The participants who attended this discussion were 19 people consisting of 16 men and 3 women. The list of ~~participants~~participants, who have attended this consultation can be found on Annexes 2 in this link, and the consultation technique can be found on Annexes 3. List of Attendees From Multistakeholder Meeting Consultation

~~Notes resulting from consultations with the Sekda Sukabumi are as follows:~~
~~The follows. The Regional Secretary of Sukabumi Regency supports the proposed activities and supports all efforts to maintain sustainability and empower potential for the community. In addition, this program must involve many stakeholders, one of which is to work together with the provincial government as the party that has the authority related to watershed management.~~

~~The local government has a minimal budget so that programs regarding climate change adaptation cannot be implemented. The support from other parties will help achieve the programs that have been planned by the Sukabumi Regional Government.~~

~~The program implementation process will be hampered because there is no MoU, therefore it is necessary to draw up an MoU as an agreement for the division of roles and functions in implementing the program~~

~~The Regional Secretary asked the consortium to follow up the consultation by drawing up an MoU (Memorandum of Understanding) between the consortium and the Regent or the relevant local government, if the proposed project has passed. This is so that each party has clarity regarding their rights and obligations in the context of implementing the designed climate change adaptation actions.~~

~~Conduct an environmental program assessment into what is suitable for a targeted area.~~

~~Based on the results of the consultation, the priority location of the program must be in the Upstream and Downstream of the Cimandiri Watershed by considering the physical condition of the area and the society~~

- ~~-2. The MoU will regulate the mechanism for requesting cooperation and will also regulate cooperation activities.~~

Formatted: Font: 11 pt

Formatted: Font: 11 pt

Formatted: Font: 11 pt

Formatted: Font: 11 pt

Formatted: Font: 11 pt

Formatted: Font: 11 pt

Formatted: Font: 11 pt

Formatted: Font: 11 pt

Formatted: Font: 11 pt

Formatted: Font: 11 pt

Formatted: Font: 11 pt

Formatted: Font: 11 pt

Formatted: Font: 11 pt

Formatted: Font: 11 pt

Formatted: Font: 11 pt

Formatted: Font: 11 pt

Formatted: Font: 11 pt, Font color: Auto

Formatted: Font: 11 pt

Formatted: Font: 11 pt

Formatted: Font: 11 pt

Formatted: Font: 11 pt

Formatted: Font: 11 pt

Formatted: Font: 11 pt

Formatted: Font: 11 pt

Formatted: Font: 11 pt

Formatted: Font: 11 pt

Formatted: Indent: Left: 0.05", Space Before: 6 pt, Outline numbered + Level: 1 + Numbering Style: 1, 2, 3, ... + Start at: 1 + Alignment: Left + Aligned at: 0.25" + Indent at: 0.5"

Formatted: Font: 11 pt

Formatted: Font: 11 pt, Font color: Blue

The ~~documentation~~ report of the consultative process with the local government can be seen on Annexes 4 ~~at this link : Report Documentation Report Documentation Report~~.



Figure 136. Consultation meeting with Regional Secretary of Sukabumi Regency



Figure 147. Submission of Recommendation Letter from Regional Secretary of Sukabumi Regency to Consortium

2-3. Head of the Gunung Halimun Salak National Park Office, to consolidate the suitability of the proposed project submitted to the Adaptation Fund with the Program Implementation Plan (RPP) and Annual Work Plan (RKT), as stipulated in the Conservation Partnership Cooperation Agreement, as well as to accommodate/gather input, related to the design of climate change adaptation project.

3-4. The Government of Cipeuteuy Village, Mekarjaya, Cianaga, Kabandungan District and the Government of Pulosari and Gunung Endut Villages, Kalapanunggal District, to explore information about community empowerment programs that need to be improved, especially the empowerment of Forest Farmers Groups. The point of this meeting is: 1] The Village Government agree and support the proposed program to the Adaptation Fund; 2] The programs must be able to follow up on activities that have been carried out previously, by strengthening and continuing all programs that have been planed; 3] Agroforestry programs must use quality and certified fruit trees for satisfactory results; 4] There must be an exchange of knowledge related to the program that has been carried out, including the exchange of information that will be built; 5] Increasing community

income through agroforestry and silvopasture must be prepared from the start for marketing; 6] Increasing food security against climate change must be integrated with government programs, as well as encouraging the government to have a road map and action plan related to climate changes.

4-5. Management of the Forest Farmers Group, to get input and ensure that the proposed program is in accordance with the group work plan in each region. List of farmer groups who participated in the meeting can be found [on Annexes 5 in this link](#) :-List of Attendees From Consultation Meeting With Forest Farmer Groups.

65. It is important for vulnerable and marginalized groups (women's groups, youth groups, and people with disabilities) to be involved in the public consultation process, to ensure that their voices are accommodated in this project. As in collaborative action research and project restoration, to secure mutual interests in the sustainable use of land resources in the future. For example, in the form of an integrated farming system that ensures linkages between farmer groups, women's groups, youth groups, and people with disabilities.



Figure 158. Consultation Meeting with Farmer Groups in Kabandungan Sub-district

Stakeholder Mapping

6789. The listed stakeholders (Local Governments, BTNGHS, corporate, KTH, NGOs media and public), either proponents or opponents are subsequently assessed based on its influence (power) and interest and classified into four groups, i.e. key stakeholder, secondary stakeholder, context setter and crowds. The most common tool used to visualize this, is to place the stakeholders in a matrix with two different axes (see below).



Figure 169. Power Mapping of Multi Stakeholders in This Project

6884. Key stakeholders have moderate to high levels of influence and interest. The appropriate participation strategy for key stakeholders is to involve their participation in all stages of the program. The secondary stakeholders, mostly as the main target groups on this project, such as farmer groups and local NGO will be involved in their participation by supporting the program stages through aspirations or direct activities. Then for the stakeholders in quadrant C (Crowd) are the least important but there might be a need to keep them informed, this could be agencies which have indirect relation with the program but their involvement may raise legitimacy. Contest setters are stakeholders that can bring risk so its existence needs to be monitored and well managed. These stakeholders can change to key players for some reason. Contest setters are stakeholders that can bring risk so its existence needs to be monitored and well managed. These stakeholders can change to key players for some reason. Good relationships with stakeholders continue to be built. For that, all the information needed must still be given so that they can continue to play an active role in achievement of objectives.

6982. The roles of each stakeholder in the map, including where women's, youth, disabled groups, and farm workers can see at below;

Table 4. Stakeholder Roles

No	Stakeholder Mapping	Stakeholder	Roles

Formatted: Font: 11 pt

Formatted: Font: 11 pt

Formatted: Font: 11 pt

Formatted: Font: 11 pt

Formatted: Font: 11 pt

Formatted: Font: 11 pt

Formatted: Font: 11 pt

Formatted: Font: 11 pt

Formatted: Font: 11 pt

Formatted: Font: 11 pt

Formatted: Font: 11 pt

Formatted: Font: 11 pt

Formatted: Font: 11 pt

Formatted: Font: 11 pt

Formatted: Font: 11 pt

Annex 5 to OPG Amended in October 2017

1	The Contest setters are stakeholders that can bring risk so its existence needs to be monitored and well managed. These stakeholders can change to key players for some reason. Contest setters are stakeholders that can bring risk so its existence needs to be monitored and well managed.	Perhutani (State Corporate)	Perhutani will continue the community forest management program (PHBM) to accommodate forest communities in the context of their participation in forest management under Perhutani areas. In this program, various activities are carried out and involve the community; one of these activities is the intercropping system activity
2	The Key stakeholders: have moderate to high levels of influence and interest. The appropriate participation strategy for key stakeholders is to involve their participation in all stages of the program, such as:	BTNGHS	One objective is for them to be able to engage the local community to participate in managing conservation areas through agroforestry and rehabilitation activities. And then to continue to improve their management skills to be able monitor and effectively protect the functions of the forest ecosystem.
		MoEF	DG. KSDAE and DG. DASHL will be engaged and consulted regarding forest and watershed management within the protected areas and its surrounding. DG
		Pemda Sukabumi District Government)	They will support local communities, especially the empowerment of Forest Farmers Groups, through the program of community empowerment and communities' enterprise
		Other regional governmental partners	Bappeda for intergovernmental coordination, BLH for Strategic Environmental Assessments of major policies and plans, e.g., detailed spatial plans (RDTR) and development planning (RPJMD)

3	<p>The secondary stakeholders, mostly as the main target groups (beneficiaries) on this project, such as farmer groups and local NGO will be involved in their participation by supporting the program stages through aspirations or direct activities, such as:</p>	KTH including including agroforestry farmers, are a group of people that identified themselves as farm workers	Sustainable agriculture and farming practices, another option is to also make them a part of the reforestation and agroforestry project. These projects will require investment in human resources for nursery, planting, tree handling, and harvest for agroforestry trees and intercrops for food security in the early years of tree establishment before tree canopies are formed and provide soil and water conservation cover
		Women	This group of women need new innovations to be able support their family in sustainable ways and time-effective at the same time. Women should also be more involved in landscape management, hence their important role in food production. Therefore, a sustainable integrated farming system within the area should be improve and focusing with the women's group
		Youth group	They have endless possible interventions, from involving them in restoration projects, awareness and campaign, developing sustainable livelihoods, to making them a part of the forest managers themselves
		Disability Group	Targeting the disability group is not only to increase their awareness and participation within forest and protected area management, but to convince them that they can contribute to do research on integrated farming system action and to save upstream protected areas
		National NGO	NGOs or civil society organizations will also play an important role in implementing projects on the ground and incorporate the knowledge transfer from outside the project scope such as from scientific research, other project best practices, and national-international networks, to the target groups and project partners.

		Local NGO	Their institutional capacity will also be addressed in this project to be improved and sharpened, so they can effectively deliver the project's objectives
4	The Crowd are the least important but there might be a need to keep them informed, this could be agencies which have indirect relation with the program but their involvement may raise legitimacy	Media, Academic, Public	National and local media for wider support and broadcast to increase public awareness. To minimize potential risk, the collective strengths of media, academic and public will be organized and this will be needed to intervene local governments more effectively, also to monitor and review the governments' actions.

7083. There are a few specific groups in local communities that will be involved based on need, such as women group, youth group, the disabled/disability, local farmers' representatives/representative and farm workers. The objective of targeting the local community is not only to increase their awareness and participation within forest and protected area management, but also to persuade them that it is not in their interest to conduct illegal activities inside upstream protected areas that will lead to degradation and increase the risk of landslides and floods. The project aims to involve as many local people as possible, however, below are a few of priority community target groups and possible interventions.

Table 54. Vulnerable Groups and The Vulnerabilities Experienced

No.	Vulnerable Groups	Form of Vulnerability
1.	Farmers Group of Land Owners	<p>a. The lack of clarity about seasonal patterns means that farmers have to pay more to overcome water shortages</p> <p>b. Farmers are vulnerable to crop failure due to drought and floods</p> <p>c. Uncertain agricultural production patterns and losses have the potential to make farmers vulnerable to releasing land</p> <p>d. Difficult market access (disasters, means of transportation), resulting in middlemen controlling prices on farmers (unequal power relations)</p> <p>e. There are many uncertainties (agricultural productivity, cropping patterns, the economic value of products, etc.) in the agricultural sector, resulting in youth being no longer interested in the agricultural sector, resulting in very low farmer regeneration</p> <p>f. Limited access to information related to climate and weather anomalies, resulting in farmers' ignorance of changes in season/weather patterns</p>

Formatted: Font: 11 pt

Formatted: Font: 11 pt

Formatted: Font: 11 pt

Formatted: Font: 11 pt

Formatted: Font: 11 pt

Formatted: Font: 11 pt

Formatted: Font: 11 pt

Formatted: Font: 11 pt

Formatted: Font: 11 pt

Formatted: Font: 11 pt

Formatted: Font: 11 pt

Formatted: Font: 11 pt

Formatted: Font: 11 pt

Formatted: Font: 11 pt

Formatted: Font: 11 pt

Formatted: Font: 11 pt

Formatted: Font: 11 pt

Formatted: Font: 11 pt

Formatted: Font: 11 pt

Formatted: Font: 11 pt

Formatted: Font: 11 pt

Formatted: Font: 11 pt

Formatted: Font: 11 pt

Formatted: Font: 11 pt

Formatted: Font: 11 pt

Formatted: Font: 11 pt

Formatted: Font: 11 pt

Formatted: Font: 11 pt

Formatted: Font: 11 pt

Formatted: Font: 11 pt

2.	Farm Workers	<ul style="list-style-type: none"> a. Loss of source of livelihood (no longer Farming) b. Lack of information about the land conservation program (climate change adaptation) in the GHSNP area, has the potential to be vulnerable to the criminalization of farm workers for accessing TNGHS land for agriculture c. The uncertainty of the source of income from agriculture has resulted in farm workers having to look for more than one source of livelihood
3.	<p>Group of women and children</p> <ul style="list-style-type: none"> - 82 women and KTH members - 2,205 women in farming households - Organization of Family Welfare Empowerment in 5 Project Target Districts 	<ul style="list-style-type: none"> a. Disaster events result in difficulties for mothers and children to access health facilities b. Disruption of access to health facilities results in difficulty access to health information and child nutrition intake c. Widows have difficulty accessing land and the high cost of agricultural production due to changing seasonal patterns further marginalizes widows d. Loss of income from agricultural livelihoods, resulting in difficulties for women to meet domestic needs (food, children's schooling, etc.) e. Economic difficulties due to crop failures trigger early marriages
4.	<p>Youth Group</p> <ul style="list-style-type: none"> a. Village Youth Alliance b. Tourism Awareness Group (Kelompok Sadar Wisata-POKDARWIS) c. Conservation Cadre d. Youth organization e. Natural Resources Conservation Task Force <p>Appendix complete data of community group organizations</p>	<ul style="list-style-type: none"> a. Natural disasters in the form of floods and landslides have prevented groups of young people from accessing education and health b. The low capacity of youth resources and the lack of access to land has resulted in groups of young people being forced to look for work in cities and ending up becoming urban poor c. The low capacity of knowledge resources and technical abilities of youth due to barriers in access to education, causing a chain reaction of youth's inability to access quality information d. A small number of youth groups have the capacity in farming and access to land, but have limited access to capital and markets
5.	Disability Group	<ul style="list-style-type: none"> a. Various kinds of limitations experienced by conditions of disability result in groups with disabilities not being able to access their basic needs b. The stigmatization of non-disabled groups towards disabled groups makes it difficult for them to be involved in social and economic activities c. Society's social insensitivity to the needs of the disabled group results in no affirmation of their basic needs

[illegible]

I. Justification for Funding

7185. Funding from the Adaptation Fund for this project will be used to increase community

resilience at the village level, especially those who are members of forest farmer groups, regarding the impacts of climate change that can occur and affect people's daily lives.

7286. In *Project Component 1*, it is projected that no planning process will occur without funding from Adaptation Fund. There will be no updated plan document for increasing resilience at the district level. There will be no resources mobilized for capacity building of key stakeholders and strengthening collaborative work between local governments and business actors, community groups, CSOs, academics and other related stakeholders. Along with funding for *Project Component 1*, which will focus on several villages upstream and downstream of Cimandiri Watershed in Sukabumi Regency. Funding from AF in *Project Component 1* will be used for activities that produce climate change adaptation action plans specific to Sukabumi Regency. The process starts with collaborative action research, followed by increasing the parties' capacity, preparing academic papers based on research results, and finally encouraging the formation of economic and adaptation groups.

7387. In *Project Component 2*, without funding from Adaptation Fund and output from Project Component 1, it is projected that forest and land management with community involvement will run as "business as usual". Threats from human activities (anthropogenic) and the impact of climate change will continue to occur with increasing trends in resource losses, yield reduction, crop failure due, pasture losses, and water and food insecurity. Initiating watershed-based ecosystem management in the Cimandiri watershed through collaborative action with the community will increase community resilience to climate change and economic welfare.

7488. In *Project Component 3*, without funding from AF, Preparing the RAD API and Information System related to climate change in the Sukabumi Regency will still not run. Funding for the Adaptation Fund will accelerate the processes of preparing both the RAD API Sukabumi Regency and Information System through collaborative multi-stakeholder development and active participation of key beneficiaries.

J. Sustainability

7599. With the commencement of this project, sustainability will be considered, particularly issues of resilience, local ownership, and future strategies for managing expectations. Broadly speaking, these considerations are as follows:

To ensure that sustainability objective, from the beginning this project will create enabling conditions for local community, government, and local organizations to have hands-on experiences, increased awareness, capacity, capability and understanding on how to protect and sustainably utilize the ecosystems upon which their livelihoods depend. A multi-stakeholder platform will be set up with technical working groups reporting back on a regular basis, while at the same time encouraging greater collaboration among stakeholders.

7699. The programme of social forestry through conservation partnerships (*Mitra Konservasi*) will ensure sustainability of improved forest management and protection of the ecosystem that plays an important role in increasing ecological resilience. The strengthened institutional capacity of community forests including to scale up their businesses, and smart farming systems to implement their long-term management plan which integrate the adaptation actions will sustain their contribution on increasing resilience. In this case the role of community organization to monitor the quality of forest and other ecosystem types will ensure the sustainability of increased resilience.

7794. Particularly related to the livelihood, the community will also be equipped with business institutions to further maximize their financial income. Market and value chain analysis will be the basis for building long-term cooperation with the private sectors, including to access wider markets. Furthermore, the community will be empowered with the legally binding institution to protect their rights and ownership of any future benefits.

7892. After the project, more local communities will have awareness and knowledge about climate change and economic resilience, so that they have the ability to maintain agricultural

land use and maintain their water management systems. This includes the adaptation action plan that will be produced that ensures financial sustainability for more effective interventions to increase resilience within certain villages of project location. The financial sustainability at community level, will be guaranteed as well by increased revolving fund that gradually widen their beneficiaries.

7993. This project will also support the development of local institutions to ensure the sustainability of the provision of ecosystem services. Where appropriate, project outputs will institutionalize a holistic watershed management approach that involves the role of communities especially those upstream into Sukabumi Regency planning.

8094. With the existence of the MoU between the Sukabumi Regent and the Consortium, the implementation of this project has a strong foundation and support from the local government of Sukabumi. This MoU is a follow-up to the coordination meeting with the Regional Secretary of the Sukabumi Regency Government on 7 July 2022 (page 33).

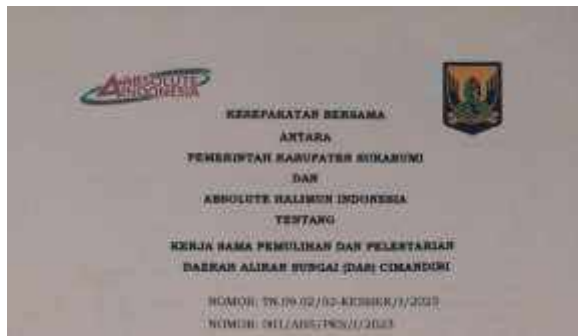


Figure 1920. Screenshot of the front page of the agreement document with the Government of Sukabumi Regency

8195. The existence of this 5-year MoU has provided access to funding from the Regional Revenue and Expenditure Budget (Anggaran Pendapatan dan Belanja Daerah-APBD) to continue the outputs and impacts of the adaptation program, during and after the project ends. In addition, this MoU also allows the Consortium and the Regional Government of Sukabumi Regency to work together to raise funds from ministry and agency programs, as well as from the private sector and other donor agencies, such as:

Table 65. Possibility of Continuation of Adaptation Program Funding

No.	Ministries/Institutions and Other Parties	Collaboration Opportunities/Programs	Possibility
1.	Government of Sukabumi Regency	Regional Medium-Term Development Plan Cimandiri River Rescue and Recovery Program	High
2.	Ministry of Environment and Forestry	Eco Village Ecovillage (Kampung Iklim) aims to create a participatory and independent village/village with environmental culture, with the hope	High

K. Environmental and Social Impact and Risk

1. Environmental Risk

41

another, must be initiated, so that the awareness-raising process after the program is completed can continue.

2. Social Risk:

8397. The social risk that may arise from this project is the inequality of community access to land whose management will partner with the National Park. This inequality of access can be caused by only certain figures who are continuously involved in the processes of awareness raising, increasing knowledge, and technical skills related to adaptation. So, the emphasis on a collaborative, inclusive and equal process between each stakeholder needs to be emphasized and evaluated continuously.

8498. Another social risk is social jealousy that may arise from other villages that are neighbors of the village, but the implementation of the adaptation program that will run is not implemented. Here, the role of learning documents and follow-up plans (RTL) is very large, so that when the program is successfully implemented, the National Parks, Regional Governments, and Community Groups can jointly initiate collaborative initiatives to replicate success in the villages affected by the program, to other villages in the vicinity.

85. Based on a risk assessment based on the environmental and social principle document of Adaptation Fund as well as the commitment and support from the Government of Sukabumi Regency which is spelled out through the MoU with the Consortium, as the basis for project implementation. In addition, there is social capital that is already owned by the Consortium, coupled with the openness of the community to the program to be implemented, so that the overall implementation of the project is considered to have a low risk (C).

Table 76. Environmental and Social Impact and Risk

Category of Risk	Checklist of environmental and social principles	No further assessment required for compliance	Potential impacts and risks – further assessment and management required for compliance
Medium	Marginalized and Vulnerable Groups	In the beginning, this project needs to assess marginalized groups to be included in the collaborative process. An assessment for vulnerable groups needs to be done to prioritize which village to implement the programme. Intensive communication must be built, so their representative can be involved in the programme.	Impact : The program will target the most vulnerable groups to the impacts of climate change, and the marginalized groups will be empowered.
Low	Compliance with the Law	The activities that have been defined at project preparation phase are aligned with existing laws and normative acts. However, activities in component number 3 is a collaborative production about adaptation strategies that needs to be done.	Impact : The establishment of RAD API at the Sukabumi Regency level, and the formation of an information system that encourages low disaster risk development.

Formatted: Font: 11 pt

Formatted: No bullets or numbering

Formatted: Font: 11 pt, Font color: Auto

Formatted: Font: 10 pt

Formatted: Font: 10 pt

Formatted: Font: 10 pt

Formatted: Font: 10 pt

Formatted: Font: 10 pt

Formatted: Font: 10 pt

Formatted: Font: 10 pt

Formatted: Font: 10 pt

Formatted: Font: 10 pt

Formatted: Font: 10 pt

Formatted: Font: 10 pt

Formatted: Font: 10 pt

Formatted: Font: 10 pt

Formatted: Font: 10 pt

Formatted: Font: 10 pt

Formatted: Font: 10 pt

Formatted: Font: 10 pt

Formatted: Font: 10 pt

Formatted: Font: 10 pt

Formatted: Font: 10 pt

Formatted: Font: 10 pt

Formatted: Font: 10 pt

Formatted: Font: 10 pt

Formatted: Font: 10 pt

Formatted: Font: 10 pt

Low	Access and Equity		Impact : Equitable access to land management in partnership with National Parks The risk of inequality in access due to the non-involvement of women, disabled and other marginalized groups. There needs to be an emphasis on collaborative processes on par with the GEDSI approach.
Low	Human Rights	The program will not harm human rights and ensure every right will be respected	
Low	Gender Equality and Women's Empowerment	An assessment of women's groups is needed and the potential for women's involvement in programs related to increasing economic resilience.	Impact : Through the GEDSI approach, women in the program's target villages will be empowered with adaptation knowledge and have economic independence, with a target objective of 50% of women's groups in each target village.
Low	Core Labour Rights	No labor rights of local farmer groups will be harmed in the process of implementing the program	
Low	Indigenous Peoples	There is no indigenous people in community in the targeted villages	
Low	Involuntary Resettlement	None of the activities of the project are aimed at displacing communities either voluntarily or by force.	
Low	Protection of Natural Habitats	Need to do rapid assessment to identify essential ecosystem and existing of natural habitats.	Impact : The project that will take place directly will help protect natural habitats through Watershed protection. The concept of agroforestry and agro silvopasture will also limit the community from land conversion.
Low	Conservation of Biological Diversity	The project needs to do assessment to identify the existing of biodiversity.	Impact : The preservation of natural habitats will directly affect the preservation of the wealth of animal biodiversity in the program target locations. In addition, the approach of land rehabilitation programs, agro silvopasture, and agroforestry will increase the number of endemic trees in the location.

Low	Climate Change	The implementation of project will not increase greenhouse gas emissions significantly and will not worsen the climate change impact in any other way.	All project components and activities will increase local capacity to sustainably adapt to climate change in the long term and climate variability in the short and medium term.
Low	Pollution Prevention and Resource Efficiency	This project will not added pollutant and will optimize	
Low	Public Health	The project plan does not have an impact on health. And the implementation of project will follow health protocol. And the implementation will not spread any pandemic (Covid19 and Monkey Pox).	
Low	Physical and Cultural Heritage	Assessment in component 1 will collect local knowledge on physical and cultural heritage in the targeted areas. This will allow analyzing the perceptions, on physical and cultural assets that may be highly valuable to the community.	Impact : Physical and cultural heritage will be respected. Any cultural heritage will be enhanced for the sake of ecology and community.
Low	Lands and Soil Conservation	Through watershed management and practice of Agroforestry and Agrosilvopastoral, lands and soil will be conserved. Critical land will also be rehabilitated. Because the community who will implement the programme, will achieve knowledge about the importance of conserving lands and soil to prevent hazards from climate change. And implementing climate-smart agriculture system which is ecological friendly.	

[illegible]

PART III: ENDORSEMENT BY GOVERNMENT AND CERTIFICATION BY THE IMPLEMENTING ENTITY

A. Record of endorsement on behalf of the government

Provide the name and position of the government official and indicate date of endorsement. If this is a regional project/programme, list the endorsing officials all the participating countries. The endorsement letter(s) should be attached as an annex to the project/programme proposal. Please attach the endorsement letter(s) with this template; add as many participating governments if a regional project/programme:

<i>Drs. H. Marwan Hamami, M.M, Regent of Sukabumi District</i>	<i>Date: July, 15, 2022</i>
--	-----------------------------

Formatted: Font: 11 pt

Formatted: Font: 11 pt

Formatted: Font: 11 pt

Formatted: Font: 11 pt

Formatted: Font: 11 pt

Formatted: Font: 11 pt

Formatted: Font: 11 pt

Formatted: Font: 11 pt

Formatted: Font: 11 pt

Formatted: Font: 11 pt

Formatted: Font: 11 pt

Formatted: Font: 11 pt

Formatted: Font: 11 pt

Formatted: Font: 11 pt

Formatted: Font: 11 pt



**MINISTRY OF ENVIRONMENT AND FORESTRY
DIRECTORATE GENERAL OF CLIMATE CHANGE**

Mangala Wanabakti Building Block VII 12th Floor, Jalan Gatot Subroto – Senayan, Jakarta 10270
Phone +62 21 5730144 Fax. : +62 21 5720194

Website : <http://ditjenppi.menlhk.go.id>

email : tusetditppi@gmail.com;

Our Ref. : *S. 282/PP1/AP1/PP1.0/8/2022*
Attachments :
Subject : **Letter of endorsement**

Jakarta, 5 August 2022

To:
The Adaptation Fund Board
c/o Global Environment Facility
Mail stop: N 7-700
1818 H Street NW
Washington DC 20433, USA

Dear Board Member,

Directorate General of Climate Change Ministry of Environment and Forestry as the National Designated Authority of Adaptation Fund in Indonesia through *Kemitraan* – Partnership for Governance Reform as the National Implementing Entity, have received and appraised 37 incoming concept notes.

After a thorough assessment process of the incoming concept notes, we come to the decision that the following 10 (ten) concept notes from 10 (ten) different organizations have met and are in accordance with the national priorities in the implementation of adaptation programs and activities to increase adaptive capacity and to reduce the impact and risks of climate change in vulnerable regions in Indonesia:

1. Yapeka; *Ecosystem-based Adaptation to Support Climate Resilience in Coastal and Small Islands of Rote Ndao and Sabu Raijua Districts in the Savu Sea*
2. TLKM; *Sustainable Landscape Governance; Towards Climate Resilience of Community in Tempe Lake Ecosystem*
3. KAPASITAS; *Adaptation to climate change through integrated forest management and sericulture business to achieve ecosystem resilience to food security for the Lake Tempe Catchment Area Community*
4. Garis Biru; *Strengthening the Adaptive Capacity of Coastal Village Communities in Supporting Food Security as a Response to Climate Change Through Stakeholder Elaboration Actions in West Sulawesi Province*
5. Sajogyo Institute; *Collaboration for the Conservation of Cimandiri Watershed Landscapes through the Potential of Silvopasture and Community Agroforestry*
6. KOAKSI; *Building Climate Resilient District in Indonesia: Case of Sigi District*
7. KEMITRAAN; *Village Based Coastal Adaptation and Resilience in Lombok Province of West Nusa Tenggara*
8. HUMA; *Change Climate and Adaptation in the Buffer Area of the New National Capital*
9. Mitra Aksi; *Increasing the resilience of smallholders from climate impacts through Smart Agriculture based on Livelihood Diversification in Indonesia*
10. KUAT (KARSA); *Strengthening Community Adaptation toward Climate Change through ProKlim in Ecoregion Neck of Sulawesi Island*



With this consideration, and in my capacity as the National Designated Authority of Adaptation Fund in Indonesia, I recommend the above proposals be granted support from the Adaptation Fund Board. All those programs will be executed by each of the submitting entities under the supervision of *Kemitraan* – Partnership for Governance Reform.

Sincerely Yours,





Laksmi Dhewanthi
Director General of Climate Change
Ministry of Environment and Forestry
as Indonesia Designated Authority of Adaptation Fund

Copy to:
Kemitraan (Partnership Governance Reform in Indonesia)

	
BUPATI SUKABUMI	
Palabuhanratu, 18 Juli 2022 M 18 Dzulhijah 1443 H	
Nomor	LA.01 / 5235 - 594 / 2022
Sifat	Penting
Lampiran	-
Hal	Dukungan Perluasan Program/ Kegiatan Absolute Indonesia.
Kepada Yth. Ketua Badan Pengurus Absolute Indonesia	
di _____ TEMPAT	
<p>Memperhatikan Surat Nomor : 006/SK-SPK/ABS/VI/2022 Hal Pemohonan Rekomendasi untuk pelaksanaan pengembangan dan perluasan program/kegiatan bersama masyarakat terhadap pengelolaan lahan/hutan, melalui peningkatan fungsi ekologi kawasan sebagai daerah tangkapan air di wilayah Daerah Aliran Sungai (DAS) Cilandiri, serta serangkaian kegiatan peningkatan kapasitas dan pengembangan ekonomi masyarakat, kami sangat mengapresiasi kegiatan yang sudah maupun yang akan dilaksanakan.</p> <p>Selanjutnya, untuk pengembangan dan perluasan program/kegiatan dan kemitraan yang akan dilaksanakan pada prinsipnya kami mendukung selama program/kegiatan tersebut:</p> <ol style="list-style-type: none">1. Selaras dengan Peraturan Daerah Nomor 4 Tahun 2021 tentang RPJMD Kabupaten Sukabumi 2021-2026, dengan Visi: <i>Terwujudnya Kabupaten Sukabumi yang Religius, Maju dan Inovatif menuju Masyarakat Sejahtera Lahir Batin</i> dengan Misi yang terkait yaitu: <i>Meningkatkan produktivitas dan daya saing ekonomi berbasis agribisnis dan pariwisata berkelanjutan,</i>2. Meningkatkan partisipasi dan peran serta masyarakat dalam pengelolaan lingkungan hidup sesuai Perda 2 Tahun 2015 tentang Perlindungan dan Pengelolaan Lingkungan Hidup Daerah;3. Tidak bertentangan dan melanggar ketentuan peraturan perundang- undangan yang berlaku serta memperhatikan norma dan nilai budaya lokal yang ada; dan4. Melibatkan masyarakat dan stakeholders di setiap obyek/lokasi pelaksanaan kegiatan. <p>Demikian, agar dapat dipergunakan sebagaimana mestinya.</p>	
 Drs. H. MARWAN HAMAMI, MM	
<p>Jalan Sitawangi Nomor 10 Telepon (0266) 433611-431018 Faksimili (0266) 433614-221017-435006 Website: sukabumikab.go.id, e-mail: setda@sukabumikab.go.id PALABUHANRATU 43364</p>	

Annex 5 to OPG Amended in October 2017

<p><u>Ahmad Munawir S,Hut, M.Si. Kepala Balai Taman Nasional Gunung Halimun Salak</u></p>	<p><u>Date: December, 22, 2020</u></p>
---	--

**PERJANJIAN KERJA SAMA
ANTARA BALAI TAMAN NASIONAL GUNUNG HALIMUN SALAK
DAN
PERKUMPULAN ABSOLUTE HALIMUN INDONESIA**

Nomor: PKS-214/CT-14/OT/UK/SM/2017/2020
Nomor: 001/ABS/PKS-TNGHS-XII/2020

TENTANG
PENGUATAN FUNGSI TAMAN NASIONAL GUNUNG HALIMUN SALAK MELALUI
KEGIATAN PEMBERDAYAAN MASYARAKAT



Pada hari ini, Selasa Tanggal Dua Puluh Dua Bulan Desember Tahun Dua Ribu Dua Puluh, bertempat di Lopa - Bogor, yang beranda tangan dibawah ini:

1. Nama : Ahmad Munawir, S.Hut, M.Si.
Jabatan : Kepala Balai Taman Nasional Gunung Halimun Salak
Alamat : Jalan Raya Cipanas, Kecamatan Kahandungan, Kabupaten Sukahara, Provinsi Jawa Barat, Kode Pos 43568.
Berdasarkan : Surat Keputusan Menteri Lingkungan Hidup dan Kehutanan Nomor SK.25/MENLHK/SETJEN/PEG.2/1/2020 tanggal 19 Januari 2020 tentang Pengisian dan Mutasi Jabatan Administrasi (Eselon III) Kementerian Lingkungan Hidup dan Kehutanan.

dalam hal ini berindak untuk dan atas nama Balai Taman Nasional Gunung Halimun Salak (BTNGHS), selanjutnya disebut sebagai PIHAK KESATU.

2. Nama : Muhammad Khotim
Jabatan : Ketua Badan Pengurus Perkumpulan ABSOLUTE HALIMUN INDONESIA (ABSOLUTE INDONESIA)
Alamat : Kp. Cipetotay Rt. 007/008, Desa Cipetotay, Kecamatan Kahandungan, Kabupaten Sukahara, Provinsi Jawa Barat, Kode Pos 43568.
Berdasarkan : Surat Keputusan Menteri Hukum dan Hak Asasi Manusia Republik Indonesia Nomor: A/HU-001062K.AH.01.07, Tahun 2019 tentang Pengakuan Pendaftaran Badan Hukum Perkumpulan ABSOLUTE HALIMUN INDONESIA tanggal 8 Oktober 2019.

dalam hal ini berindak untuk dan atas nama Perkumpulan Absolute Halimun Indonesia (ABSOLUTE INDONESIA), selanjutnya disebut sebagai PIHAK KEDUA.

Paraf	
Pihak Kesatu	Pihak Kedua
	

Formatted: Font: 11 pt

Formatted: Font: 11 pt

Formatted: Font: 11 pt

Formatted: Font: 11 pt

Formatted: Font: 11 pt

B. Implementing Entity Certification

Provide the name and signature of the Implementing Entity Coordinator and the date of signature. Provide also the project/programme contact person's name, telephone number and email address

I certify that this proposal has been prepared in accordance with guidelines provided by the Adaptation Fund Board, and prevailing National Development and Adaptation Plans (President Decree No. 16/2015; P.13/MENLHK/Setjen/OTL.0/1/2016; P.33/MENLHK/Setjen/Kum.1/3/2016; Indonesia Intended Nationally Determined Contribution/INDC; COP 21; Paris Agreement signed by Government of Indonesia; Book and Map of Information System of Vulnerability Index Data (SIDIK); Permen-KP No. 2 year 2013; Climate Change Adaptation National Action Plan and subject to the approval by the Adaptation Fund Board commit to implementing the Project in compliance with the Environmental, Social Policy and Gender Policy of the Adaptation Fund and on the understanding that the Implementing Entity will be fully (legally and financially) responsible for the implementation of this Project.

Laode Muhamad Syarif

Executive Director of Partnership for Governance Reform in Indonesia (Kemitraan)

Implementing Entity Coordinator

Date: (Month, Day, Year)

Tel. and email:

Project Contact Person: **Dewi Rizki**

Program Director For Sustainable Governance Strategic, Kemitraan

Tel. and Email: +62-21-7279 9566; Dewi.Rizki@kemitraan.or.id

- NIE = Kemitraan

⁶ Each Party shall designate and communicate to the secretariat the authority that will endorse on behalf of the national government the projects and programmes proposed by the implementing entities.

Formatted: Font: 11 pt

Formatted: Font: 11 pt

Formatted: Font: 11 pt

Formatted: Font: 11 pt

Formatted: Font: 11 pt

Formatted: Font: 11 pt

Formatted: Font: 11 pt

Formatted: Font: 11 pt

Formatted: Font: 11 pt

Formatted: Font: 11 pt

Formatted: Font: 11 pt

Formatted: Font: 11 pt

Formatted: Font: 11 pt

Formatted: Font: 11 pt

Formatted: Font: 11 pt

Formatted: Font: 11 pt

Formatted: Font: 11 pt

Formatted: Font: 11 pt

Formatted: Font: 11 pt

Formatted: Font: 11 pt

Formatted: Font: 11 pt



Project Formulation Grant (PFG)

Submission Date: **February 7, 2023**

Adaptation Fund Project ID:

Country/ies: **Indonesia**

Title of Project/Programme: **Collaboration for the Conservation of Cimandiri Watershed Landscapes through the Potential of Silvopasture and Community Agroforestry.**

Type of IE (NIE/MIE): **NIE**

Implementing Entity: **Kemitraan – The Partnership for Governance Reform**

Executing Entity/ies: **Consortium for Sukabumi Climate Adaption (Sajogyo Institute Absolute Indonesia Forest Watch Indonesia IFM Fund)**

A. Project Preparation Timeframe

Start date of PFG	1 September 2023
Completion date of PFG	31 August 2024

B. Proposed Project Preparation Activities (\$)


Describe the PFG activities and justifications:

List of Proposed Project Preparation Activities	Output of the PFG Activities	USD Amount
Data collection for baseline and analysis for each component	Collected data required to set up the basis for argument formulation and programme justification in the proposal	\$ 13.793
Travel meetings required for data collection and consultation	Confirmation of assumptions and situation on the ground before programme document finalized	\$ 12.931
Expert hiring for proposal writing	Assist Kemitraan in writing and use of collected baseline data to justify programme and enhance the proposal	\$ 19.655
Focus Group Discussion with Multistakeholders	To receive feedback and input on the Goal, Objective, Outcome and Output of the proposal which to be submitted to AF, so as to ensure it is in line with the national programmes and strategies of climate change adaptation	\$ 3.621

Total Project Formulation Grant		\$ 50.000
---------------------------------	--	-----------

C. Implementing Entity

This request has been prepared in accordance with the Adaptation Fund Board's procedures and meets the Adaptation Fund's criteria for project identification and formulation

Implementing Entity Coordinator, IE Name	Signature	Date (Month, day, year)	Project Contact Person	Telephone	Email Address
Laode M. Syarif, KEMITRAAN		February 7, 2023	Dewi Rizki	+6221-22780580	dewi.rizki@kemitraan.or.id

Annexes

Annexes 1

Gender Assessment

Gender Assessment Categories	Description relevant to project	Action Needed
Gender Roles	<ul style="list-style-type: none"> Women on rural area have a greater vulnerability to being affected by climate change. Women provide water and food at the dinner table in the local communities in Sukabumi Regency. If agriculture and farmer are affected by climate change, women will have the most impact. Women in the design of activity planning, especially in this case, the creation of adaptation action strategy planning, are usually unheard of and are not involved. On-site infrastructure systems generally represent this. In every livelihood activity, such as agriculture and farmer, women have their role. So that the involvement of women is needed for adaptation actions that are closely related to community subsistence activities. Adaptation actions should have gender-sensitive implications, and a systematic gender approach should exist in the energy, forestry, agriculture, fisheries, land management, conflict management, and security sectors. In the local community in Cimandiri watershed ecosystem, the elders whose voices are heard tend to be male. Women rarely have a vital role. 	<ul style="list-style-type: none"> Organize special meetings for women's groups. Organize meetings that are tailored to the availability of women's time and in a place that is convenient for them. Organize activities led by female facilitators. Give women the freedom to take their children to participate in activities. Involvement of women in participatory action research. Involvement of women in multi-stakeholder collaborative forums.
Gender Based Violence	<ul style="list-style-type: none"> Economic resilience by diversifying financial resources is feared to benefit some social classes and leave lower classes. Women in low social class tend to be marginalized and have no power. The number of violence against women in Sukabumi reached 186 cases in 2020 and 156 cases in 2021. And cases of violence against children were 126 cases in 2020. 	<ul style="list-style-type: none"> It is necessary to mitigate the prevention and handling of violence that occurs at the project site.

Formatted: Indent: Left: 0", Right: 0"

Formatted: Indent: Left: 0", Right: 0.07"

Formatted: Font: 11 pt

Formatted: Font: 11 pt

Formatted: Font: 11 pt

Formatted: Font: 11 pt

Formatted: Font: 11 pt

Formatted: Font: 11 pt

Formatted: Font: 11 pt

Formatted: Font: 11 pt

Formatted: Font: 11 pt

Formatted: Font: 11 pt

Formatted: Font: 11 pt

Formatted: Indent: Left: 0", Right: 0.06"

Formatted: Indent: Left: 0", Right: 0.01"

Formatted: Font: 11 pt

Formatted: Font: 11 pt

Formatted: Font: 11 pt

Annex 5 to OPG Amended in October 2017

Gender Equality	<ul style="list-style-type: none"> In 2019, the gender inequality index (IKG) in Sukabumi Regency was 0.544. Relatively high and above the average IKG Jakarta. The involvement of women in the Sukabumi Regency can be a catalyst in the value of gender inequality. The involvement in parliament, which indicates the level of women's political literacy, is only 14%. There is no 2% increase in the percentage of involvement between 2020 to 2021. 	<ul style="list-style-type: none"> Importance of selecting representatives from appropriate women's groups and ascertaining their preference for internally elected spokespeople, who are often not the same as formal leaders in administrative units. Ensure the dissemination of key program messages through various women-friendly channels, including radio, social media, word of mouth, banners, and audio-visual materials for the illiterate community. Ensure the dissemination of messages in plain language, local languages if possible, and with pictures. Ensure that messages that are disseminated through various media are packaged in a gender-sensitive manner. 	<p>Formatted: Indent: Left: 0", Right: 0.06"</p> <p>Formatted: Indent: Left: 0", Right: 0.01"</p> <p>Formatted: Font: 11 pt</p> <p>Formatted: Font: 11 pt</p> <p>Formatted: Font: 11 pt</p> <p>Formatted: Font: 11 pt</p> <p>Formatted: Font: 11 pt</p> <p>Formatted: Font: 11 pt</p>
	<ul style="list-style-type: none"> The Indonesian government has initiated many initiatives to address gender inequality. Ratify the marriage law to revise the marriage age for women. Pass the Law on the Crime of Sexual Violence. The initiation is aimed at gender mainstreaming. The Ministry of Women's Empowerment and Child Protection issues general gender-responsive climate change adaptation guidelines. In the Sukabumi RPJMD 2018-2023, issues related to gender are included in strategic problems and issues that the Sukabumi Regency Government considers. Includes involving women in development. 	<ul style="list-style-type: none"> Integrating gender analysis and gender equality regulation into programs and projects to identify where specific vulnerabilities to climate change lie, and where opportunities for mitigating and adapting to climate change can be found. To ensure that gender sensitive integrated in the project, conducting a gender analysis on all budget lines and financial instruments for in programs for adaptation, mitigation, technology transfer and capacity building are needed. 	<p>Formatted: Indent: Left: 0", Right: 0.06"</p> <p>Formatted: Indent: Left: 0", Right: 0.01"</p> <p>Formatted: Font: 11 pt</p> <p>Formatted: Font: 11 pt</p> <p>Formatted: Font: 11 pt</p> <p>Formatted: Font: 11 pt</p> <p>Formatted: Font: 11 pt</p>
	Policy/Government of Indonesia's (GOI)		
	Law for Gender Mainstreaming		

Annexes 2

List of Attendees From Multistakeholder Meeting Consultation

No	Name	Title	Role	Male/Female
----	------	-------	------	-------------

Annex 5 to OPG Amended in October 2017

1	<u>Ade Suryaman, SH, MA</u>	<u>The Regional Secretary of Sukabumi Regency</u>	<u>Carry out government, administration, organization, and management as well as provide administrative services to all regional apparatuses.</u>	<u>Male</u>
2	<u>Prasetyo AP., M.Si</u>	<u>Head of Natural Resources Division at the Regional Secretariat</u>	<u>Assist the Assistant for Economics, Development, and Natural Resources in facilitating policy formulation, coordination of programs and administrative services, control and evaluation of policies in the field of Natural Resources</u>	<u>Male</u>
3	<u>Drs.Andang Koswara</u>	<u>Secretary of the Environmental Service of Sukabumi Regency</u>	<u>Assist and be responsible to the head of the Department, in terms of: Provision of general administrative services, Provision and processing of data for the preparation of strategic plans, Coordination of the preparation of work plans and implementation of the tasks of the Office in an integrated manner, Preparation of budgets and administration.</u>	<u>Male</u>
4	<u>Any mulyani S.Pd.i M.Si</u>	<u>Head of Finance and Planning at the Regional Secretariat</u>	<u>Assist the Regional Secretary through the Assistant General Administration in implementing regional policies, as well as monitoring and evaluating the implementation of regional policies in the fields of planning, finance and reporting within the Regional Secretariat.</u>	<u>Female</u>
5	<u>Ir. Sudrajat</u>	<u>Regent's Expert Staff for Social Affairs</u>	<u>Provide considerations and assessments in the community sector regarding every policy-making process .</u>	<u>Male</u>
6	<u>Ir. Bambang Widiantoro</u>	<u>Regent's Expert Staff for Development and Economics</u>	<u>Provide considerations and assessments in the field of Development and Economics regarding every policy-making process.</u>	<u>Male</u>
7	<u>Yayan Sofian</u>	<u>Head of the Food Crops Production Section of the Agriculture Service</u>	<u>Carry out the preparation, implementation of policies, and providing technical guidance, as well as monitoring and evaluation in the field of food crops</u>	<u>Male</u>
8	<u>Tana Indra Permana</u>	<u>Head of Waste Management</u>	<u>Assist the Head of Service in formulating and implementing technical policies for the development of waste reduction, utilization, transportation and processing.</u>	<u>Male</u>
9	<u>Adi Istiadi</u>	<u>head of the PSDA division of the Public Works Department Sukabumi Regency</u>	<u>Carry out regional government affairs</u>	<u>Male</u>

Annex 5 to OPG Amended in October 2017

10	Rasyad Muhara	Head of Environmental Management - environmental service	Prepare work programs, implement, regulate, evaluate and report on the implementation of data and information inventory of natural resources, RPPLH and KLHS, environmental impact studies and environmental maintenance	Male
11	Yudi Indriawan.S, Hut, MSE, MSc	Head of Cooperation Section at the Regional Secretariat of Sukabumi Regency	Carry out some of the tasks of Assistant for Government and People's Welfare in the scope of cooperation.	Male
12	Sahril Hidayat	Secretary of the Department Housing & Human Settlements Development	Carry out the tasks of decentralization and deconcentration in the housing, residential and land areas in accordance with the laws and regulations.	Male
13	Imas Latifah	Head of Processing and Marketing Division of Food Crops and Horticulture	Assisting the Regent in carrying out Government Affairs in the field of agriculture, the Food Crops and Horticulture sub-business which is the authority of the Region	Female
14	M. Kosar	Ketua Badan Pengurus Absolute Indonesia	Mentoring and facilitation of forest farmer groups	Male
15	Purnama Wijaya	Badan Pengurus Absolute Indonesia	Mentoring and facilitation of forest farmer groups	Male
16	Yudiana	Sekretaris Badan Pengurus Absolute Indonesia	Mentoring and facilitation of forest farmer groups	Male
17	Maksum Syam	Sajogyo Institute	Conducting research, documentation, education, training, and policy advocacy to achieve the ideals of agrarian justice and community assistance	Male
18	Isnenti A.	Manager data and information services of Forest Watch Indonesia	Conducting research on ecological-socio-economic conditions related to forests, community assistance, and advocacy related to saving Indonesia's forests	Female
19	Deden P	IFM Fund Staff	Facilitate the work of Independent Monitors in conducting monitoring in the forestry sector through a sustainable funding mechanism and institutional capacity building	Male

Annexes 3

The consultation techniques

The consultation process with stakeholders will serve to convey the plan for the Adaptation Through Landscape Approach to the Cimandiri Watershed in Sukabumi District as well as to gather information and insights from various stakeholders in the Sukabumi district government.

The program proponent will ensure that the consultation process has been:

- Comprehensive - giving all stakeholders the opportunity to express their views;
- Balanced - ensuring that the consultation is representative;
- Timely - allowing sufficient time for stakeholder inputs and contributions.
- Tailored - ensuring that the needs of specific target audiences are met; and
- Incorporated - taking into account all feedback and input in the program
- Language – taking into account the use of local languages in consultation with local communities

The objective of the stakeholder consultation process is:

- (i) Collect information, ideas, opinions, and insights from a wide range of stakeholders to complement the data analysis and the program.
- (ii) Find out the programs that are being carried out by the relevant stakeholders
- (iii) Raise awareness of adaptation program among relevant stakeholders

The following key aspects will be consulted on:

Effectiveness

- To what extent is this program in line with government programs
- Whether the location of the proposed program is in accordance with the local government program

Relevance

- To what extent is the proposed program relevant to the development needs

Consultation technique stages:

- Pre Entry: the consortium explains the values, needs, assumptions, and goals of the consortium and assesses the capabilities and skills of the consortium.
- Entry: The problem statement is expressed, linked, formulated, and sets out the steps that need to be followed.
- Gathering Information and defining problems: To explain the problem by listening, observing, giving statements, standard notes, interviews, group meetings, defining problem and problem solution
- Implementing The Plan: The intervention is implemented by following the guidelines/steps, by telling all the parts that must be done, when, how, who is responsible, and the expected results.
- Evaluation: Ongoing activities are monitored, processes, results assessments are needed to evaluate the activities of the consortium.

The stakeholder consultation technique should include the principles of good governance, namely : 1) Transparency, 2) Participation, and 3) Accountability

From the results of the initial stakeholder consultation, The preliminary stakeholder list will serve as a database for the consultation and stakeholder outreach activities in the implementing program.

Annexes 4

Report on the Consultation Process with the Sukabumi Regional Secretary

On July 7, 2022, the Consortium consisting of Absolute Indonesia, FWI, the Sajogyo Institute and the IFM Fund visited the Sukabumi Regional Government to conduct a consultation process on the proposed adaptation Fund program for the Cimandiri watershed.

Annex 5 to OPG Amended in October 2017

This consultation invites:

1. The Regional Secretary of Sukabumi Regency
2. Part of Natural Resources Management in Secretary of Sukabumi Regency
3. Department of Housing and Settlement Areas of Sukabumi Regency
4. Public Works Department for Sukabumi Regency, Sukabumi Regency
5. Expert Staff of the District Head of Sukabumi
6. Sukabumi District Agriculture Office

Result of the consultation:

- The Regional Secretary of Sukabumi Regency supports the proposed activities and supports all efforts to maintain sustainability and empower potential for the community. In addition, this program must involve many stakeholders, one of which is to work together with the provincial government as the party that has the authority related to watershed management.
- The local government has a minimal budget so that programs regarding climate change adaptation cannot be implemented. The support from other parties will help achieve the programs that have been planned by the Sukabumi Regional Government.
- The program implementation process will be hampered because there is no MoU, therefore it is necessary to draw up an MoU as an agreement for the division of roles and functions in implementing the program
- The Regional Secretary asked the consortium to follow up the consultation by drawing up an MoU (Memorandum of Understanding) between the consortium and the Regent or the relevant local government, if the proposed project has passed. This is so that each party has clarity regarding their rights and obligations in the context of implementing the designed climate change adaptation actions.
- Conduct an environmental program assessment into what is suitable for a targeted area.
- Based on the results of the consultation, the priority location of the program must be in the Upstream and Downstream of the Cimandiri Watershed by considering the physical condition of the area and the society
- The MoU will regulate the mechanism for requesting cooperation and will also regulate cooperation activities.

Annexes 5

List of Attendees From Multistakeholder Meeting Consultation

<u>No</u>	<u>Nama</u>	<u>Title</u>	<u>Male/Female</u>
<u>1</u>	<u>Cecep sanusi</u>	<u>Ketua Tuqu Tani</u>	<u>Male</u>
<u>2</u>	<u>Nawawi</u>	<u>Sekretaris Tuqu Tani</u>	<u>Male</u>
<u>3</u>	<u>Oding</u>	<u>Bendahara Tuqu Tani</u>	<u>Male</u>
<u>4</u>	<u>Asep Tisna Mubarak</u>	<u>Ketua Cahaya Mandiri</u>	<u>Male</u>
<u>5</u>	<u>Ojat</u>	<u>Sekretaris Cahaya Mandiri</u>	<u>Male</u>
<u>6</u>	<u>Baban</u>	<u>Bendahara Cahaya Mandiri</u>	<u>Male</u>
<u>7</u>	<u>Santa</u>	<u>Ketua Naga Tonjong</u>	<u>Male</u>
<u>8</u>	<u>Wardi</u>	<u>Sekretaris Naga Tonjong</u>	<u>Male</u>

Annex 5 to OPG Amended in October 2017

9	Medi	Bendahara Naga Tonjong	Male
10	Awarji	Ketua Datar Tani	Male
11	Juandi	Sekertaris Datar Tani	Male
12	Abdilah	Bendahara Datar Tani	Male
13	Bubun	Ketua Naga Lestari	Male
14	Makmun	Sekertaris Naga Lestari	Male
15	Oman	Bendahara Naga Lestari	Male
16	Yandi	Ketua Berkah Tani	Male
17	Dedin	Sekertaris Berkah Tani	Male
18	Agus	Bendahara Berkah Tani	Male
19	Andi	Ketua Tumaritis	Male
20	Sukma	Sekertaris Tumaritis	Male
21	Aji Saputra	Bendahara Tumaritis	Male
22	Eko	Ketua Sumber Rezeki	Male
23	Mara	Sekertaris Sumber Rezeki	Male
24	Jaijat Sudrajat	Bendahara Sumber Rezeki	Male
25	Oding	Ketua Jaya Berkah	Male
26	Iwan	Sekertaris Jaya Berkah	Male
27	Restu	Bendahara Jaya Berkah	Male
28	Kosim	Ketua Sukamanah	Male
29	Dedih	Sekertaris Sukamanah	Male
30	Mulyadi	Bendahara Sukamanah	Male
31	Sugiri	Ketua KOPEL	Male
32	Tirta	Sekertaris KOPEL	Male
33	Irwan	Bendahara KOPEL	Male
34	Oman	Ketua Jaya Mekar Gede Harepan	Male
35	Tatang	Sekertaris Jaya Mekar Gede Harepan	Male

Annex 5 to OPG Amended in October 2017

<u>36</u>	<u>Ading</u>	<u>Bendahara Jaya Mekar Gede Harepan</u>	<u>Male</u>
<u>37</u>	<u>Emed</u>	<u>Ketua Mekar Mukti</u>	<u>Male</u>
<u>38</u>	<u>Eman</u>	<u>Sekretaris Mekar Mukti</u>	<u>Male</u>
<u>39</u>	<u>Warta</u>	<u>Bendahara Mekar Mukti</u>	<u>Male</u>
<u>40</u>	<u>Anap</u>	<u>Ketua Segar Alam</u>	<u>Male</u>
<u>41</u>	<u>Nasa</u>	<u>Sekretaris Segar Alam</u>	<u>Male</u>
<u>42</u>	<u>Yadi</u>	<u>Bendahara Segar Alam</u>	<u>Male</u>